

## COHIBA — AZIMUT



**Builder:** AZIMUT

**Year Built:** 2005

**Model:** Motor Yacht

**Price:** PRICE ON APPLICATION

**Location:** Bahrain

**LOA:** 48' 9" (14.86m)

**Beam:** 14' 3" (4.34m)

**Min Draft:** 3' 11" (1.19m)

**Cruise Speed:** 24 Kts. (28 MPH)

**Max Speed:** 30 Kts. (35 MPH)

Our experienced yacht broker, Andrey Shestakov, will help you choose and buy a yacht that best suits your needs **Cohiba — AZIMUT** from our catalogue. Presently, at Shestakov Yacht Sales Inc., we have a wide variety of yachts available on our sale's list. We also work in close contact with all the big yacht manufacturers from all over the world.

If you would like to buy a yacht **Cohiba — AZIMUT** or would like help answering any questions concerning purchasing, selling or chartering a yacht, please call **+1(954)274-4435**

---

# TABLE OF CONTENTS

---

TABLE OF CONTENTS	2
SPECIFICATIONS	4
Overview	4
Basic Information	4
Dimensions	4
Speed, Capacities and Weight	4
Accommodations	5
Hull and Deck Information	5
Engine Information	5
PHOTOS	6
Layout	6
Helm	6
Helm Seat	6
Flybridge Seating	6
Flybridge Sink	7
Bow	7
Sunpads	7
Cockpit Seating	7
Swim Platform	7
Saloon TV	7
Saloon Seating	8
Lower Helm	8
Galley	8
Master Cabin	8
Master Head	8
Master TV	8
Master Shower	9
Guest Cabin	9

---

Guest Head	9
Guest Sink	9
Guest Shower	9
CONTACTS	10
Contact details	10
Telephones	10
Office hours	10
Address	10

# SPECIFICATIONS

## Overview

Recently serviced Upgraded refrigerator New stereo system and satellite TV Flybridge Ample seating Flat bed Large shade cover Large sink Upstairs cool box/fridge Emergency life raft Upper Helm Raymarine ST60 Raymarine pathfinder RL70C Raymarine autopilot ST6001 Bow thruster Trim tabs Quick chain counter CHC 1202m Cockpit / Swim Platform Large swim platform Adjustable electronic gangway Sofa Storage compartment Gate to swim platform Foredeck Bathing pads Hatch to master cabin Anchor controls Saloon Ample seating Folding table 30" Sony Bravia TV Humax SAT TV Sony DVD player Large storage Lower Helm Raymarine RC520 Raymarine ST60 Raymarine ST6001 Simrad VHF radio RS81 Side power bow thruster Trim tabs Ritchie compass Master Cabin & Head Large double bed 30" Sony Bravia TV Large wardrobe Large mirror Roof hatch Ambient surround lights Humax SAT TV Sony DVD player En suite including: Toilet Shower Sink Guest Cabin & Head Large double bed Large mirror Day guest head including: Toilet Shower Sink Crew Cabin Bed Sink Toilet Under bed storage Galley Electric hob Microwave Sink Large fridge Storage area Engineering Kohler generator Dolphin 24v 100A charger Seatech 12v M200

## Basic Information

**Category:** Motor Yacht

**Model Year:** 2005

**Year Built:** 2005

**Country:** Bahrain

**Fly Bridge:** Yes

**Cockpit:** Yes

## Dimensions

**LOA:** 48' 9" (14.86m)

**Beam:** 14' 3" (4.34m)

**Min Draft:** 3' 11" (1.19m)

## Speed, Capacities and Weight

**Cruise Speed:** 24 Kts. (28 MPH)

**Max Speed:** 30 Kts. (35 MPH)

**Fuel Capacity:** 449.0924884 Gallons

---

## Accommodations

---

**Total Cabins:** 2

**Total Berths:** 4

---

## Hull and Deck Information

---

**Hull Material:** GRP

**Hull Color:** White

---

## Engine Information

---

**Engines:** 2

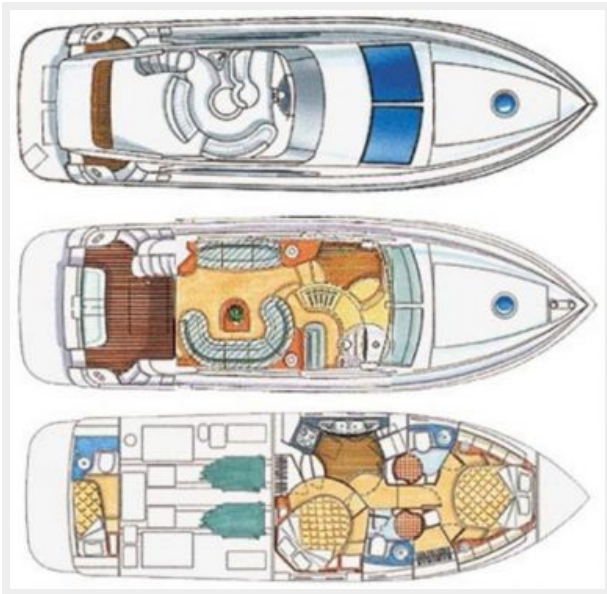
**Manufacturer:** Caterpillar

**Model:** C-9

**Fuel Type:** Diesel

# PHOTOS

**Layout**



**Helm**



**Helm Seat**



**Flybridge Seating**



**Flybridge Sink**



**Bow**



**Sunpads**



**Cockpit Seating**



**Swim Platform**



**Saloon TV**



**Saloon Seating**



**Lower Helm**



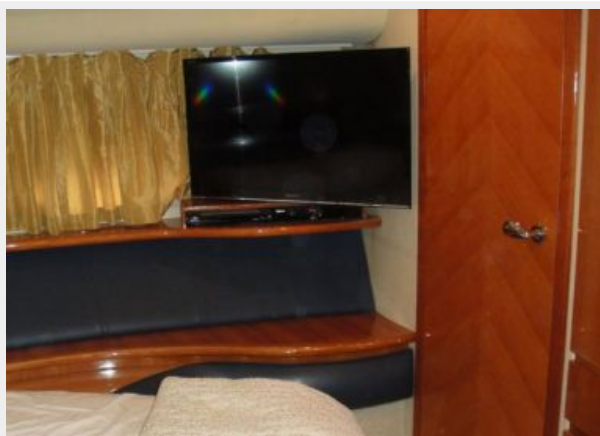
**Galley**



**Master Cabin**



**Master TV**



**Master Head**





**Master Shower**



**Guest Cabin**



**Guest Head**



**Guest Sink**



**Guest Shower**



# CONTACTS

---

Andrey Shestakov, leading yacht broker of the sales department of Shestakov Yacht Sales Inc. Shestakov Yacht Sales Inc., the official representative of the Miami/Fort Lauderdale FL headquarters.

## Contact details

---

Email: [andrey@shestakovyachtsales.com](mailto:andrey@shestakovyachtsales.com)

Web: [shestakovyachtsales.com/en/](http://shestakovyachtsales.com/en/)

## Telephones

---

USA: +1(954)274-4435

## Office hours

---

Monday – Saturday: **9:00 - 21:00** EDT

Sunday: **closed**

## Address

---



Harbour Towne Marina, 850 NE 3rd St,  
STE 213, Dania, FL 33004