

# MULDER 94 VOYAGER — MULDER YACHTS



**Builder:** MULDER YACHTS

**Year Built:** 2015

**Model:** Motor Yacht

**Price:** PRICE ON APPLICATION

**Location:** Netherlands

**LOA:** 94' 0" (28.65m)

**Beam:** 22' 8" (6.90m)

**Max Draft:** 6' 5" (1.95m)

**Cruise Speed:** 8 Kts. (9 MPH)

**Max Speed:** 18 Kts. (21 MPH)

Our experienced yacht broker, Andrey Shestakov, will help you choose and buy a yacht that best suits your needs **MULDER 94 VOYAGER — MULDER YACHTS** from our catalogue. Presently, at Shestakov Yacht Sales Inc., we have a wide variety of yachts available on our sale's list. We also work in close contact with all the big yacht manufacturers from all over the world.

If you would like to buy a yacht **MULDER 94 VOYAGER — MULDER YACHTS** or would like help answering any questions concerning purchasing, selling or chartering a yacht, please call **+1(954)274-4435**

---

# TABLE OF CONTENTS

---

TABLE OF CONTENTS	2
SPECIFICATIONS	3
Overview	3
Basic Information	3
Dimensions	3
Speed, Capacities and Weight	4
Accommodations	4
Hull and Deck Information	4
Engine Information	4
PHOTOS	5
CONTACTS	7
Contact details	7
Telephones	7
Office hours	7
Address	7

---

# SPECIFICATIONS

---

## Overview

---

Under construction and due for delivery early 2015 this is an exceptional opportunity to acquire a brand new, all aluminium, high volume, long range cruising yacht from a well respected Dutch shipyard, without the lengthy lead times associated with new builds.

The 94 VOYAGER project brings together an expert design and build team from northern Europe including Vripack Naval Archtiects, Mulder Shipyard and designer Frank Laupman of Omega Architects who has worked extensively with Heesen and Mulder shipyards.

In realizing a project conceived for the needs of today's yachtsman, the VOYAGER 94 team have aimed to bridge a gap in the current market, offering clients those features usually found in larger yachts. Built to RINA classification, stand out features include a real transatlantic capability that combines exceptional range of 4,200nm with low fuel consumption; superb interior volume and spacious living areas; well conceived accommodation for 8 guests in 4 cabins and a large, versatile flybridge with affording every luxury for life out of doors.

## Basic Information

---

**Category:** Motor Yacht

**Model Year:** 2015

**Year Built:** 2015

**Country:** Netherlands

**Fly Bridge:** Yes

## Dimensions

---

**LOA:** 94' 0" (28.65m)

**Beam:** 22' 8" (6.90m)

**Max Draft:** 6' 5" (1.95m)

---

## Speed, Capacities and Weight

---

**Cruise Speed:** 8 Kts. (9 MPH)

**Cruise Speed Range:** 4200

**Max Speed:** 18 Kts. (21 MPH)

**Water Capacity:** 660.43013 Gallons

**Fuel Capacity:** 4490.924884 Gallons

---

## Accommodations

---

**Total Cabins:** 4

**Sleeps:** 8

**Crew Cabin:** 2

**Crew Sleeps:** 4

---

## Hull and Deck Information

---

**Hull Material:** Aluminum

**Hull Designer:** Vripack Naval Architects

**Exterior Designer:** Frank Laupman / Omega Architects

**Interior Designer:** Frank Laupman / Omega Architects

---

## Engine Information

---

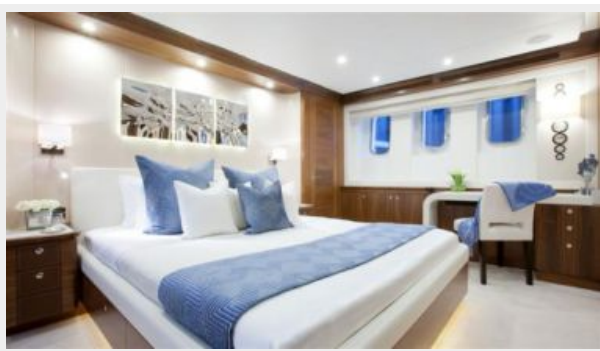
**Engines:** 2

**Manufacturer:** Caterpillar

**Model:** C18 - 1150

**Fuel Type:** Diesel

# PHOTOS





# CONTACTS

---

Andrey Shestakov, leading yacht broker of the sales department of Shestakov Yacht Sales Inc. Shestakov Yacht Sales Inc., the official representative of the Miami/Fort Lauderdale FL headquarters.

## Contact details

---

Email: [andrey@shestakovyachtsales.com](mailto:andrey@shestakovyachtsales.com)

Web: [shestakovyachtsales.com/en/](http://shestakovyachtsales.com/en/)

## Telephones

---

USA: +1(954)274-4435

## Office hours

---

Monday – Saturday: **9:00 - 21:00** EDT

Sunday: **closed**

## Address

---



Harbour Towne Marina, 850 NE 3rd St,  
STE 213, Dania, FL 33004