

ABOUNDING — HATTERAS



Builder: HATTERAS

Year Built: 1982

Model: Motor Yacht

Price: PRICE ON APPLICATION

Location: United States

LOA: 65' 0" (19.81m)

Beam: 17' 11" (5.46m)

Min Draft: 4' 10" (1.47m)

Cruise Speed: 9 Kts. (10 MPH)

Max Speed: 10 Kts. (12 MPH)

Our experienced yacht broker, Andrey Shestakov, will help you choose and buy a yacht that best suits your needs **Abounding — HATTERAS** from our catalogue. Presently, at Shestakov Yacht Sales Inc., we have a wide variety of yachts available on our sale's list. We also work in close contact with all the big yacht manufacturers from all over the world.

If you would like to buy a yacht **Abounding — HATTERAS** or would like help answering any questions concerning purchasing, selling or chartering a yacht, please call **+1(954)274-4435**

TABLE OF CONTENTS

TABLE OF CONTENTS	2
SPECIFICATIONS	6
Basic Information	6
Dimensions	6
Speed, Capacities and Weight	6
Accommodations	6
Hull and Deck Information	7
Engine Information	7
DETAILED INFORMATION	8
Introduction	8
Vessel Walk Through	8
Pilothouse Details	9
Galley/Wet-Bar	9
Main Saloon	10
Aft Deck Dining	10
Master's Stateroom	10
Guest's Stateroom #1	11
Guest's Stateroom #2	11
Guest's Stateroom #3/Crew's Stateroom	11
Flybridge/Boat Deck	11
Deck	12
Engine Room/Mechanical Systems	12
Electrical	13
Miscellaneous	13
Broker's Remarks	13
Disclaimer	13
Exclusions	14
Disclaimer	14

PHOTOS	15
Pilothouse	15
Layout from Hatteras Brochure	15
Pilothouse Helm	15
Pilothouse Helm	15
Pilothouse Bench Seat	16
Pilothouse Ladder to Flybridge	16
Galley	16
Galley Up	16
Galley Counter	17
Galley Granite Counters	17
Galley Wet Bar	17
Galley Wet Bar	17
Main Saloon View Aft	17
Saloon - View Fwd	17
Saloon - Stbd Side	18
Saloon - Port Side	18
Aft Deck Dining	18
Aft Deck View Fwd	18
Aft Deck View Aft	18
Master Stateroom	18
Master Stateroom Extra Single Berth Port Side	19
Master Stateroom Drawer Storage Stbd Side	19
Master Strm Hanging Locker Stbd Side	19
Master Stateroom View Fwd	19
Master Strm Hanging Locker Port Side	20
Master Stateroom Ensuite Head	20
Master Strm Head - Tub & Shower	20
Master Stateroom Ensuite Head	20

Guest Stateroom #1	21
Guest Stateroom #1 View Forward	21
Guest Head	21
Guest Stateroom #2	21
Guest Stateroom #2 Storage	21
Guest Stateroom #3	21
3rd Guest Head	22
Washer & Dryer	22
Flybridge Helm	22
Flybridge Bar & Dunnage Boxes - View Fwd	22
Flybridge Seating - View Aft	22
Flybridge Seating - View Fwd	22
Flybridge Port Bench Seat	23
Flybridge Bench Seating - Port	23
Flybridge Starboard Bench Seat	23
Flybridge Bench Seating - Stbd	23
Tender & Davit	23
Bow Pulpit	23
Boston Whaler 13'4" Sport Tender	24
Cockpit	24
Boston Whaler 13'4" Sport Tender - View Fwd	24
Yamaha Outboard 2009	24
Yamaha Outboard 2009	25
Engine Room - View Fwd	25
Engine Room Stbd Side - View Fwd	25
Engine Room Port Side - View Fwd	25
Engine Room - Port Main	25
Engine Room - Port Side	25
Engine Room - Stbd Main	26

Engine Room - Stbd	26
Gearbox Port	26
Gearbox Stbd	26
Generator - Port	26
Engine Room - Fuel Filtration	26
Generator - Port	27
Generator - Stbd	27
Generator - Stbd	27
Hatteras 65 LRC at Anchor	27
Cruising into the Sunset	28
CONTACTS	29
Contact details	29
Telephones	29
Office hours	29
Address	29

SPECIFICATIONS

Basic Information

Category: Motor Yacht

Sub Category: Long Range Cruiser

Model Year: 1982

Year Built: 1982

Country: United States

Vessel Top: 2369

Fly Bridge: Yes

Dimensions

LOA: 65' 0" (19.81m)

LWL: 58' 7" (17.86m)

Beam: 17' 11" (5.46m)

Min Draft: 4' 10" (1.47m)

Speed, Capacities and Weight

Cruise Speed: 9 Kts. (10 MPH)

Cruise Speed RPM: 1400 Kts.

Cruise Speed Range: 2750

Max Speed: 10 Kts. (12 MPH)

Max Speed RPM: 2100 Kts.

Displacement: 114000 Pounds

Water Capacity: 448 Gallons

Holding Tank: 185 Gallons

Fuel Capacity: 2689 Gallons

Accommodations

Total Cabins: 4

Total Berths: 7

Sleeps: 8

Total Heads: 3

Hull and Deck Information

Hull Material: Fiberglass

Deck Material: Fiberglass

Hull Configuration: Full Displacement

Hull Color: White

Hull Finish: Fiberglass

Hull Designer: Jack Hargrave

Exterior Designer: Jack Hargrave

Engine Information

Engines: 2

Manufacturer: GM

Model: 6-71N

Engine Type: Inboard

Fuel Type: Diesel

DETAILED INFORMATION

Introduction

“Abounding” is a clean and exceptionally well maintained example of this tested and proven offshore capable long-range cruising design. Designed by naval architect, Jack Hargrave, the **Hatteras 65 LRC** provides not only safe, extended range cruising opportunities but with plenty of storage and interior spaciousness, the owners and guests may be comfortable while off voyaging or visiting foreign ports of call. Representing a lot of well designed, high quality cruising yacht for the money, the **Hatteras 65 LRC**, “**Abounding**”, is the yacht to buy if you’re finally “ready to get away”.

Standout features and benefits of this yacht design include a walk-in engine room with full standing headroom and the ability to get outboard and work on the engines in relative comfort. Four (4) staterooms and three (3) heads with showers, Galley-up, spacious and comfortable main saloon, large, enclosed, air-conditioned aft-deck, pilothouse with helm, teak interior wood paneling, covered walk around side-decks, Portuguese bridge, cockpit and large fly-bridge/boat-deck for the 13’ Boston Whaler tender.

Vessel Walk Through

“**Abounding**” is the “standard deckhouse arrangement” (per the AMF Hatteras factory brochure circa 09/1982) with a bench seat in lieu of a dinette/pass-thru from the galley in the pilothouse, galley privatized from the saloon and with a wet-bar in-lieu of a day-head on the main deck level. The lower deck is considered to have been the “standard lower deck arrangement” plan with the only exception being the over/under crisscrossing single berths in the second guest’s stateroom in lieu of twin berths.

One may enter the **pilothouse** from either port or starboard sliding side-doors. Here is found a helm station with a full array of navigational and communications electronics, a bench seat, a teak ladder leading up to the fly-bridge or stairs lead forward and down to the 3 guest staterooms, **day-head** and **laundry**. The **first guest’s stateroom** is aft to the port side and features comfortable twin berths with built-in nightstand between and reading lamps over each berth, a large, cedar-lined hanging locker, large and deep drawer storage for clothing beneath the berths, a private entrance into the shared **guest’s head** w/ stall shower, granite countertops and back splashes. The **second guest’s stateroom** is across the companionway on the starboard side. This stateroom shares the **guest’s/day head** via a door from the companionway and features over & under crisscrossing single berths w/ reading lamps over each, drawers and a large, cedar-lined hanging locker for clothing storage. A Frigidaire stacked clothing **washer and dryer** are housed inside a cabinet on the starboard side of the companionway, just forward of the second guest’s stateroom. Forward of the guest’s/day head and in the forepeak is the very nice and comfortable **third guest’s stateroom/crew quarters**. This stateroom features over/under single bunk berths on the port side with reading lamps over each, drawer storage across to starboard, a

hanging locker aft to port, a private head with stall shower, sink and mirror and a privacy door.

Back on the main deck level, a companionway leads aft from the pilothouse on the main-deck level past a **wet-bar** with granite counter-top outboard to starboard. A large pantry locker follows aft to starboard with the **galley** situated across to port. Continuing aft, into the **main saloon** one finds a sofa with wooden coffee table and an occasional chair to port and two comfortable arm chairs with table between across to starboard. Aft on the port side of the saloon, a stairway leads down to the **engine room** access door or aft to the private **master's stateroom** with head en-suite. The master's stateroom features a queen sized bed situated on the vessel's centerline and lots of storage for clothing in many large, deep drawers and two wide closets. The en-suite head features a full size bathtub/shower. Aft of the main saloon is the hard enclosed and fully air-conditioned **aft-deck** which has been tastefully furnished as a formal dining salon with a table that seats 6 – 10. Wing doors port and starboard lead forward via covered, walk-around side-decks to the Portuguese bridge and forward from here onto the foredeck. A **cockpit** aft of and down from the aft-deck enables ease in boarding or disembarking the vessel and has been custom fitted with trolling rod holders for catching fresh dinner while transiting between ports of call.

Pilothouse Details

Lower helm station is fully equipped including Naiad stabilizer control panel, engine controls, fully instrumented command center, S/S destroyer type wheel and a Danforth Constellation binnacle mounted compass with 8" card. Additional features include a teak parquet sole, ladder to the fly-bridge, chart drawers beneath the bench seat and a wet hanging locker. Electronics at this station include;

- Garmin 7215 touch-screen monitor with GPS/Chart Plotter, Depth recorder and Sirius satellite weather feed. (2013)
- Furuno 64 mile range radar with open array antenna
- Simrad AP20 automatic pilot
- Icom ICM 504 VHF radio
- Motorola VHF radio-telephone
- Closed circuit monitoring system with cameras in engine room and above cockpit
- Datamarine digital depth sounder and knot meter/log.
- Raymarine loudhailer
- AC/DC distribution panels

Galley/Wet-Bar

Wet-bar is outboard to starboard and the galley is opposite and across on the port side. Both areas have granite counter-tops, lots of storage cabinets and raised paneling with burlled maple insets. The wet-bar has a small under-mounted sink w/ freshwater and a Greenoble 8" brass ship's clock and 8" brass barometer as nautical décor. Galley features include;

- Large pantry locker
- Kenmore trash compactor
- S/S full size side by side Refrigerator/Freezer – G.E.
- 4 burner electric stove top – G.E.
- Oven w/ broiler – Modernmaid
- Dishwasher – Kitchen-aid
- Microwave Oven – Sensor
- Dual S/S sinks w/ in-sink-erator and instant hot water (in-op)

Main Saloon

Teak paneling with new custom valances, Hunter-Douglas duet blinds, and a carpeted sole produce a warm, comfortable feel. An upholstered convertible sofa/double bed with a matching arm chair are to the port side. A coffee table is set in front of the coffee table and a matching side table is just aft of the sofa. Across to starboard is a 50" Samsung flat-screen TV and 2 arm chairs with a side-table in-between. Aft and to the port-side a wide set of stairs lead down to access the engine-room going forward or, moving aft, one enters the private master's stateroom.

Aft Deck Dining

The covered and fully enclosed aft-deck has been usefully converted into a formal dining salon. A table seats 6 – 10 with the leaves installed and a wet-bar is built into cabinets forward on the aft-deck. Wing doors open as do the sliding glass windows on the port and starboard sides if natural ventilation is desired in lieu of air-conditioning and a door leads out and aft to the 120 Sq Ft, self-bailing fiberglass cockpit. Cockpit features include;

- Walk-thru transom door out to fiberglass swim platform
- 4 trolling rod holders mounted in gunwales
- Washdown hose bibs for both fresh and saltwater
- Nautical Ensign
- Lazarette

Master's Stateroom

This spacious and luxuriously appointed stateroom spans the full width of the ship's beam. Features include:

- Queen-size berth on centerline with large, deep drawer storage under, nightstands (2), reading lamps (2) and a single berth for a child or grandchild outboard to the port side w/ drawer storage under.
- Two wide, full length closets

- Triple bureau w/ 9 deep drawers
- Head with full size bathtub/shower en-suite

Guest's Stateroom #1

This comfortable and functional stateroom features;

- Long and wide twin berths with large, deep drawer storage under, built-in nightstand between, private entrance to the shared guest's head and shower and a large, cedar-lined hanging locker.

Guest's Stateroom #2

This comfortable stateroom is perfect for 2 kids or teenagers as it features;

- Over/under 90 degree crisscrossing single berths, large built-in chest of drawers, cedar-lined hanging locker and reading lamps over each berth.

Guest's Stateroom #3/Crew's Stateroom

Additional features include:

- Over/under large single bunk berths w/ reading lamps over each
- 1- large opening overhead (Bowmar type) hatch
- Built-in dresser, 2 hanging lockers
- Private head with shower.

Flybridge/Boat Deck

The fly-bridge and upper helm station provide seating for the helmsperson in a single pedestal chair as well as comfortable seating for guests on two large bench seats with cushions just aft. These areas are protected from the sun by dual Bimini tops which connect to a radar arch upon which the ship's antennas are mounted. A fiberglass wet-bar is positioned amidships and separate the helm from the guest's seating area. The boat-deck follows aft of the guest's seating area. Tender Notes: 1979 Boston Whaler 13'4" Sport serial #DWCE3252M79H (always garage kept or kept covered when aboard since new). Condition is very good. Outboard motor is a 2009 Yamaha 25 hp electric start 2-stroke motor with less than 50 original hours. Additional features include;

- Garmin 12" GPS/Plotter w/ SAT weather and depth recorder modules
- 1 – ICOM and 1 – Motorola VHF radio-telephone

- Forward Bimini top (new 5/2014)
- S/S Destroyer type steering wheel & 1 – 6” Ritchie power damp compass mounted inside binnacle.
- Boston Whaler 13’4” Sport Model FBG tender with 2009 Yamaha 25 hp outboard motor
- Magma LPG BBQ grill mounted on fly-bridge
- Life raft – Switlik 8 person in canister
- EPIRB

Deck

The foredeck is uncluttered and well organized to allow for easy management of ground tackle and dock lines. A Portuguese bridge aft of the foredeck protects the wheelhouse from crashing waves and covered, walk-around side-decks enable safe passage fore and aft on both sides of the vessel. Deck features include;

- Galley Maid Windlass w/ chain gypsy (serviced in 2013)
- Ground tackle includes 1 – 88# Delta anchor with s/s swivel (new 2013) and 500’ of 3/8“ BBB chain rode, 1 – 75# CQR anchor w/ 300’ 7/8” braided nylon rode and 1 – “lunch-hook” anchor.
- Divided anchor locker w/ hawse pipes, 72” bow pulpit with single S/S anchor roller,
- Marquipt 8 step “Tide-Ride” boarding stairs
- 1 – 6 step aluminum (tide-ride type) boarding stairs
- 2 – FBG deck-boxes (47”x17”x18”) mounted to port and to starboard on foredeck
- Single beam remote controlled searchlight (Rayline)
- Tender Davit – Electric

Engine Room/Mechanical Systems

The engine room spans the full width of the beam, features full standing headroom and the ability to walk between and outboard of both main engines with ease. This area is very well illuminated by both 110 V florescent and 32V lighting. Additional features and equipment in this area include;

- 2 – GM 6-71N in-line 6 Cyl diesel main engines w/ 3,200 estimated original hours. (Strb S/N 6A-425795, Port S/N 6A-425766)
- Dual racor fuel filters/water separators for each main engine
- 1 – Northern Lights 20 KW generator with 553 hours since being installed new in 2008
- 1 – Perkins/Detroit Diesel Corp 20 KW generator with 3351 hours
- Hynautic hydraulic steering, Allison marine gears 2.0:1
- 7 – Cruiseair marine air-conditioning compressors (updated)
- Naiad Stabilizers with fins
- Air compressor
- Co2 fire extinguishing system
- Engine Block Heaters

- Engine Start/Stop Switches

Electrical

Vessel is wired for 110V/240VAC and 12V/32VDC and includes;

- (2) 20kw Generators (1-Northern Lights and 1-DDC)
- (2) 50amp Shore Power Cords
- (3) Banks of 8 volt batteries
- (1) LaMarche Constavolt 240V Battery Charger
- (1) Newmar 140V/30amp House Battery Charger
- (2) Battery Tender Chargers for 12V Gen Start Batteries

Miscellaneous

A 400 GPD **Sea Recovery water-maker** is uninstalled and has been left “pickled” is included in the sale and an extensive ship's spare parts inventory is also included in the sale.

The running gear consists of 2 - S/S propeller shafts of 2” Dia, V-struts w/ cutlass bearings, 2 – 23” W x 34” L bronze rudders w/ S/S rudder posts & 2 – bronze alloy 3 bladed propellers.

9.5 knots cruising speed achieved at 1,400 RPM, top speed is 10.5 knots.

Cruising range of between 2,500 and 3,000 nautical miles.

The Hatteras 65 LRC is a full-displacement (solid fiberglass) hull design with long keel and rounded bilges that harden at the transom. The design was intended for all-weather, long-range cruising in safety and comfort and the yacht’s high quality construction, proven sea-keeping abilities and comfortable accommodations for up to eight in four staterooms has made the yacht a favorite among sea going live-aboards.

Broker's Remarks

“**Abounding**” has been well maintained by the yacht’s current and past owners. She is a proven safe, economical and sea-worthy hull design and is one of the most comfortable long-range cruisers ever designed in this size class. With a replacement cost of at least \$4.5M, “Abounding” represents a lot of high quality U.S built LRC for the money. Owners have enjoyed cruising in the Bahamas for the last year and are selling to change yachts and get back into fishing.

Disclaimer

The Company offers the details of this vessel in good faith but cannot guarantee or warrant the

accuracy of this information nor warrant the condition of the vessel. A buyer should instruct his agents, or his surveyors, to investigate such details as the buyer desires validated. This vessel is offered subject to prior sale, price change, or withdrawal without notice.

Exclusions

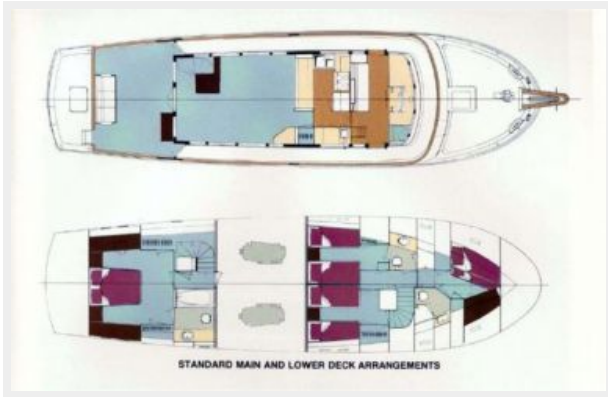
Owner's personal belongings.

Disclaimer

The Company offers the details of this vessel or yacht in good faith but cannot guarantee or warrant the accuracy of this information nor warrant the condition of the vessel. A buyer should instruct his representatives, agents, or his surveyors, to investigate such details as the buyer desires validated. This vessel or yacht is offered subject to prior sale, price change, or withdrawal without notice.

PHOTOS

Layout from Hatteras Brochure



Pilothouse



Pilothouse Helm



Pilothouse Helm



Pilothouse Bench Seat



Pilothouse Ladder to Flybridge



Galley

Galley Up



Galley Counter



Galley Granite Counters



Galley Wet Bar



Galley Wet Bar



Main Saloon View Aft



Saloon - View Fwd



Saloon - Stbd Side



Saloon - Port Side



Aft Deck Dining



Aft Deck View Fwd



Aft Deck View Aft



Master Stateroom



Master Stateroom Drawer Storage Stbd Side



Master Stateroom Extra Single Berth Port Side



Master Stateroom View Fwd



Master Strm Hanging Locker Stbd Side



Master Strm Hanging Locker Port Side



Master Stateroom Ensuite Head



Master Strm Head - Tub & Shower

Master Stateroom Ensuite Head



Guest Stateroom #1



Guest Stateroom #1 View Forward



Guest Head



Guest Stateroom #2



Guest Stateroom #2 Storage



Guest Stateroom #3



3rd Guest Head



Washer & Dryer



Flybridge Helm



Flybridge Bar & Dunnage Boxes - View Fwd



Flybridge Seating - View Aft



Flybridge Seating - View Fwd



Flybridge Port Bench Seat



Flybridge Bench Seating - Port



Flybridge Starboard Bench Seat



Flybridge Bench Seating - Stbd



Tender & Davit



Bow Pulpit

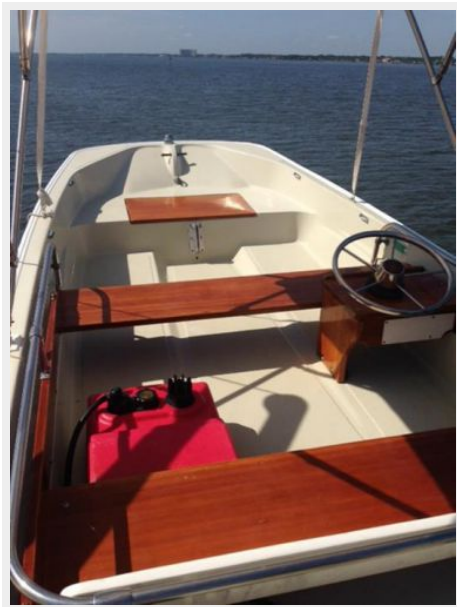


Boston Whaler 13'4" Sport Tender

Cockpit



Boston Whaler 13'4" Sport Tender - View Fwd



Yamaha Outboard 2009



Yamaha Outboard 2009



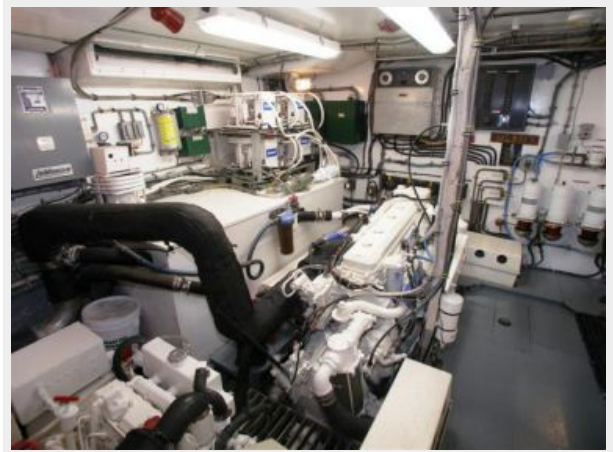
Engine Room - View Fwd



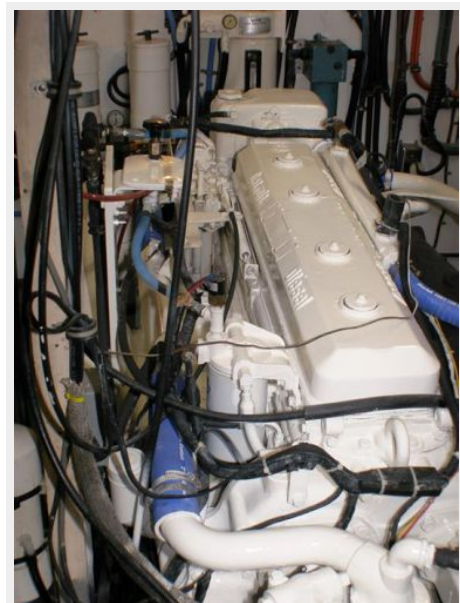
Engine Room Stbd Side - View Fwd



Engine Room Port Side - View Fwd



Engine Room - Port Main



Engine Room - Port Side



Engine Room - Stbd



Engine Room - Stbd Main



Gearbox Port



Gearbox Stbd



Engine Room - Fuel Filtration



Generator - Port



Generator - Port



Generator - Stbd



Generator - Stbd



Hatteras 65 LRC at Anchor



Cruising into the Sunset



CONTACTS

Andrey Shestakov, leading yacht broker of the sales department of Shestakov Yacht Sales Inc. Shestakov Yacht Sales Inc., the official representative of the Miami/Fort Lauderdale FL headquarters.

Contact details

Email: andrey@shestakovyachtsales.com

Web: shestakovyachtsales.com/en/

Telephones

USA: +1(954)274-4435

Office hours

Monday – Saturday: **9:00 - 21:00** EDT

Sunday: **closed**

Address



Harbour Towne Marina, 850 NE 3rd St,
STE 213, Dania, FL 33004