

DUKES REHAB — SEA RAY



Builder: SEA RAY

LOA: 34' 0" (10.36m)

Year Built: 2006

Min Draft: 2' 3" (0.69m)

Model: Cruiser

Max Draft: 3' 1" (0.94m)

Price: PRICE ON APPLICATION

Location: United States

Our experienced yacht broker, Andrey Shestakov, will help you choose and buy a yacht that best suits your needs **Dukes Rehab — SEA RAY** from our catalogue. Presently, at Shestakov Yacht Sales Inc., we have a wide variety of yachts available on our sale's list. We also work in close contact with all the big yacht manufacturers from all over the world.

If you would like to buy a yacht **Dukes Rehab — SEA RAY** or would like help answering any questions concerning purchasing, selling or chartering a yacht, please call **+1(954)274-4435**

TABLE OF CONTENTS

TABLE OF CONTENTS	2
SPECIFICATIONS	5
Overview	5
Basic Information	6
Dimensions	6
Speed, Capacities and Weight	6
Accommodations	6
Hull and Deck Information	6
Engine Information	7
DETAILED INFORMATION	8
Key Features	8
Salon / Dinette	8
Galley	9
Master Stateroom	9
Mid-Cabin	9
Head	10
Electronics & Navigational Equipment	10
Electrical System	10
Mechanical Equipment & Engine Details	11
Deck / Hull Equipment & Features	11
Broker's Comments	12
Exclusions	12
Exclusions	12
Disclaimer	12
PHOTOS	13
Salon 2	13
Salon 1	13
Salon 3	13

Flatscreen TV	13
Salon Floor	14
Salon Seating	14
Main Distribution Panel	14
Aft Berth Seating Area	14
Fridge and Freezer	15
Galley	15
Stove Top	15
Microwave	15
Forward Island Berth	15
Hanging Locker	15
Stand Up Head	16
Stand Up Head 2	16
Aftermarket Helm Canvas	16
Main Helm	16
Like New Dash	16
Chartplotter	16
VHF with Splitscreen Function of C80	17
Radar	17
Spotlight Control	17
Bottom Finder	17
Helm Seats	18
Bow Thrusters	18
Cabin Entry Door	18
Helm Carpet	18
Cockpit 2	19
Cockpit 3	19
Cockpit Table	19
Cockpit	19

New Cockpit Carpet	19
Port Cockpit	19
DVD Player in Cockpit TV	20
Upgraded Factory MOMO Sound System	20
Cockpit Carpet	20
MOMO Audio Subwoofer	20
Cockpit Icemaker	20
Cockpit Sink	20
Teak Table Cover	21
Forward Facing Helm Chair	21
Engine Room	21
Like New Engine Room	21
Port Engine	21
Starboard Engine	21
Wine Cooler	22
(2) rod Holders	22
Port View	22
Stern View	22
Transom Door	22
Wide Swim Platform	22
Underwater Lights - (Reflection)	23
Radar Dome	23
Forward Deck	23
Layout of 340	23
CONTACTS	24
Contact details	24
Telephones	24
Office hours	24
Address	24

SPECIFICATIONS

Overview

This is the most highly optioned out and most well maintained 2006 340 Sundancer you will find on the market today. This spotless, turn-key **loaded** package has only 290 hours on her twin 8.1s 370hp Mercury V-drive inboards and is equipped with an optional **Bow Thruster**. Her beautifully raked profile gleams as her **Pewter** gelcoat has been well cared for and always kept under over.

This vessel was just pulled out of the water for a fresh bottom job and had a fresh detail. Complete engine services & generator services were also just professionally rendered. The engine room is "like new" clean and has had many recent updates including newer risers and manifolds.

Sea Ray ranks among the very best names in the business by consistently delivering cutting edge products. This description clearly fits this particular Sea Ray 340 Sundancer as she is equipped with options unique to this particular vessel. Besides the bow thruster there is a mind blowing factory installed Momo Sound system which is very rare. She offers a cockpit TV, cockpit ice maker, Raymarine C80 Chartplotter / Radar / Fishfinder, underwater lights, and new custom cockpit carpet.

Below decks, her midcabin accommodations are a compelling blend of cherry wood cabinets, Ultraleather upholstery, and designer galley appliances. The expansive cabin area offers a large forward island berth, pleasing headroom and a tremendous amount of storage. Privacy curtains separate the sleeping areas from the main salon, and the 23" flat-screen TV can be viewed from anywhere in the cabin. The gourmet galley has spacious countertops, recessed stove & sink with solid-surface covers, refrigerator & freezer, microwave w/ coffeemaker, and plenty of storage. The large enclosed head compartment has a VacuFlush toilet. The interior is odor free.

Up in the cockpit you will find three forward facing helm seats with thigh rise bolsters, an abundance of comfortable quality U shaped seating with a newer camper canvas enclosure. The wet bar area features an ice maker, a removable 15" flatscreen TV w/DVD, and an area for a large carry along cooler. There is new custom cockpit carpet and a teak cockpit table which is a great place to sit around during the evenings while enjoying her underwater lighting.

Just the right size for a day trip, or a trip to the Keys! Its timeless beauty and unmatched elegance make it the best in its class. This vessel is easy to handle with her optional power steering and very quiet with her patented underwater exhaust. Call today to arrange your easy showing, you will not be disappointed.

Basic Information

Category: Cruiser

Sub Category: Express

Model Year: 2006

Year Built: 2006

Country: United States

Coast Guard #: 1183426

Dimensions

LOA: 34' 0" (10.36m)

Min Draft: 2' 3" (0.69m)

Max Draft: 3' 1" (0.94m)

Speed, Capacities and Weight

Water Capacity: 45 Gallons

Holding Tank: 28 Gallons

Fuel Capacity: 225 Gallons

Accommodations

Total Cabins: 1

Total Berths: 5

Total Heads: 1

Hull and Deck Information

Hull Material: Fiberglass

Hull Color: White

Engine Information

Engines: 2

Manufacturer: Mercury

Model: 8.1s

Engine Type: Inboard

Fuel Type: Gas/Petrol

DETAILED INFORMATION

Key Features

- Bow Thruster
- Pewter Hull
- Raymarine C80 Chartplotter / Radar / Fishfinder
- Optional cockpit Flatscreen TV with DVD and large cabin Flatscreen TV
- Underwater lights
- Momo – Premium Cockpit Sound System w/ enhanced speakers, amplifiers and subwoofer
- Always kept undercover
- Newer Camper Canvas
- Complete engine and generator services completed 5-14
- New shaft seals, bottom paint, hoses, water heater, etc. 5-14
- New Risers and Manifolds in 2012
- New cockpit carpet
- Meticulously maintained!
- Fresh detail
- Low hours
- Presented in turn key readiness

Salon / Dinette

- Large cream leather sleeper sofa
- Rectangular mixed wood pedestal table for dining or entertaining
- (5) Cherry cabinets
- (2) Storage shelves and a drawer
- Decorative mirror
- (5) Recessed overhead lights
- Optional recessed 23" flat screen color TV – Upgraded
- Clarion AM/FM radio/CD player with Sirius Satellite Radio

- Clarion 6-disc CD changer
- MP3 player receptacle
- Recessed overhead speakers
- Access to sump pump
- Concealed Main Distribution Panel
- Stainless steel grab rail
- Round overhead tinted hatch
- Below deck storage box

Galley

- Dual voltage refrigerator with freezer
- Kenyon (2) burner cook top w/ Corian cover
- LG Stainless steel microwave-café combo oven
- Molded fiberglass deep sink w/ Corian cover
- “Grohe” Stainless steel faucet
- Cherry upper and lower cabinets
- Back-splash area w/ Tambour doors
- Multiple drawer storage
- Cabinets have built-in dish racks and utensil trays
- (3) Recessed overhead lights
- Stainless steel framed tinted portal w/ screen
- KEC recessed DVD player
- Recessed overhead speakers
- 12V plug receptacle
- Kiddie fire extinguisher
- Stainless steel towel/grab rail
- Round overhead tinted hatch

Master Stateroom

- Full-size island marine queen berth w/ storage below
- Mirrored bulkhead
- (2) Cedar-lined hanging lockers
- Port and starboard Cherry storage cabinets at bulkheads
- Reading lights
- Overhead tinted hatch with shade
- Privacy curtains

Mid-Cabin

- L-shaped cream leather sofa converts to queen berth to sleep (2)
- Extensive storage
- Mirror
- Lighting
- Additional starboard storage area
- Privacy curtains

Head

- Fiberglass enclosed stand-up head compartment
- VacuFlush head w/fiberglass cover
- Vanity with Corian countertop, stainless steel sink and storage below
- Mirrored medicine cabinets
- Convenience shower w/curtain
- Stainless steel towel/hand rail
- Overhead lighting
- Opening portal
- Power vent
- Receptacle
- Privacy door

Electronics & Navigational Equipment

- Raymarine C80 Chartplotter / Radar w/2KW Dome – Upgraded
- Raymarine Fishfinder / Bottom Sounder with DSM 300 – Upgraded
- Mercruiser Smartcraft digital instrumentation
- Compass
- Digital depth finder
- Northstar remote VHF radio
- Helm remote for Momo Sound System
- Helm remote for ACR Spotlight – Upgraded
- Bow Thruster – Upgraded
- Cockpit TV / DVD – Upgraded
- Momo – Premium Cockpit Sound System w/ enhanced speakers, amplifiers and subwoofer – Upgraded

Electrical System

- Kohler 5.0kW FWC generator – Fully Serviced 5-14
- (4) Batteries with switches and trays
- Converter.battery charger

- Galvanic isolators
- 12 Volt operating system
- Dual 30 AMP dockside power system
- AC and DC distribution panel
- DC breakers
- GFI outlets
- DC lighting and receptacles

Mechanical Equipment & Engine Details

- Twin 370hp Mercruiser 8.1L FWC Horizon engines w/ 290 hours – Fully Serviced 5-14
- Remote oil filters
- Automatic fire suppression system
- Underwater exhaust system
- Dripless shaft logs – NEW 5-14
- Emergency start system
- Power-hydraulic steering – Upgraded
- Hydraulic trim tabs
- Pressurized hot/cold water system
- VacuFlush head system
- Macerator w/ seacock interlock
- Seacocks & strainers on all underwater fittings

Deck / Hull Equipment & Features

- Black Sunbrella full Camper canvas enclosure - Upgraded
- Full cockpit mooring cover – Upgraded
- Dash cover – Upgraded
- Dual adjustable helm & companion seats w/ flip-up thigh bolsters
- Port companion seat w/ flip-up thigh bolster
- Cockpit U-shaped cushioned seating w/ storage
- Fiberglass storage cabinet
- Cockpit wet bar w/ optional concealed U-Line Icemaker – Upgraded
- Molded fiberglass sink w/chrome faucet
- New Cockpit carpeting - Upgraded
- (3) Courtesy lights
- Molded acrylic sliding cabin door
- (9) Stainless steel cup holders
- White acrylic transom gate
- (2) Molded fiberglass steps to gunwales
- Kiddie fire extinguisher
- (2) Factory rod holders – Upgraded

- Lofrans windlass
- Remote spotlight – Upgraded
- Pewter gel-coat - Upgraded
- Gel-coated bilge area
- Under water lights – Upgraded
- Bottom Paint – New 5-14

Broker's Comments

“Duke’s Rehab” has had excellent care and been kept under cover by her owner who keeps her in precise shape. In May of 2014 over 9000.00 was spent on her to bring her up to exacting standards, complete engine and genset services, shaft seals, fresh bottom job, new hoses, detailing, water heater, you name it.. Genny has low hours as well. Risers and manifolds replaced in 2012.

Exclusions

Owner's personal items.

Exclusions

Owner's personal belongings.

Disclaimer

The Company offers the details of this vessel or yacht in good faith but cannot guarantee or warrant the accuracy of this information nor warrant the condition of the vessel. A buyer should instruct his representatives, agents, or his surveyors, to investigate such details as the buyer desires validated. This vessel or yacht is offered subject to prior sale, price change, or withdrawal without notice.

PHOTOS

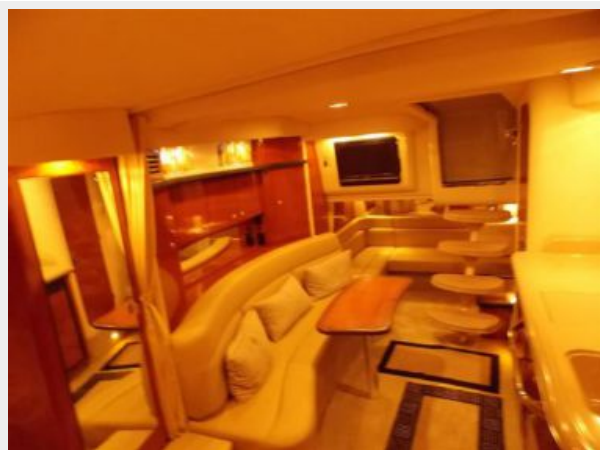
Salon 2



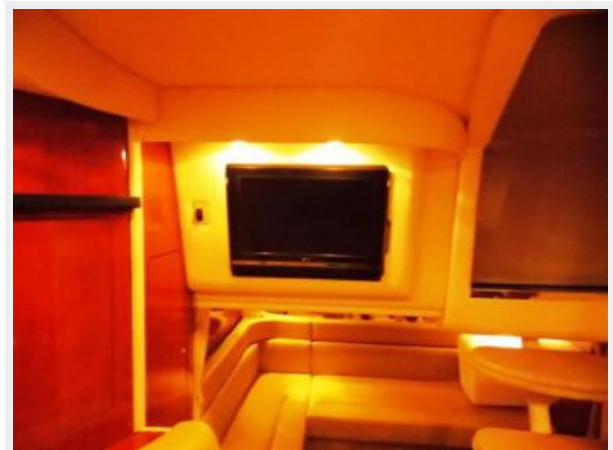
Salon 1



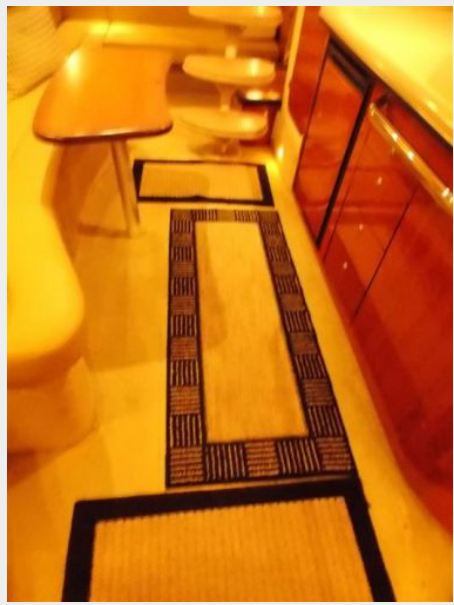
Salon 3



Flatscreen TV



Salon Floor



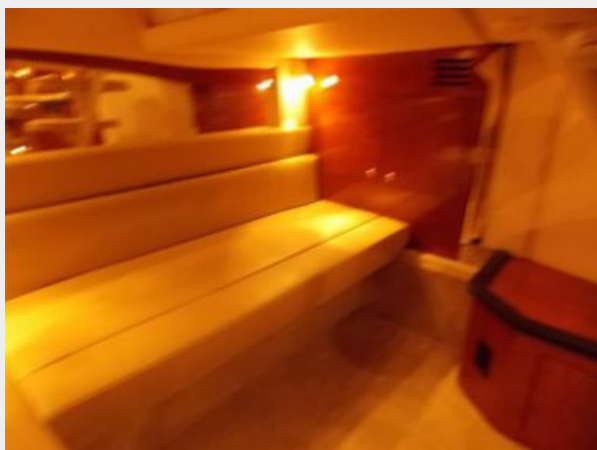
Salon Seating



Main Distribution Panel



Aft Berth Seating Area



Fridge and Freezer



Galley



Stove Top



Microwave



Forward Island Berth



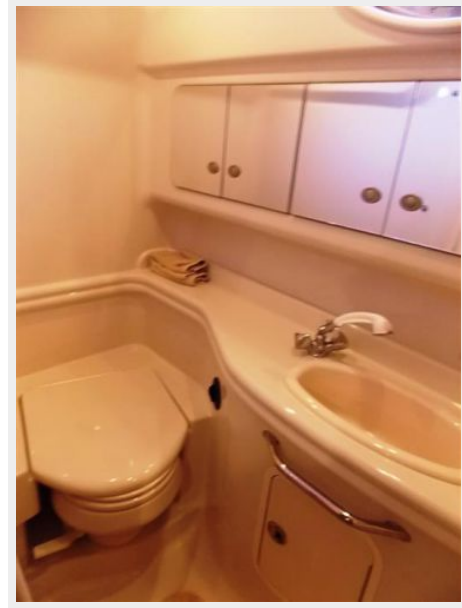
Hanging Locker



Stand Up Head



Stand Up Head 2



Aftermarket Helm Canvas



Main Helm



Like New Dash



Chartplotter



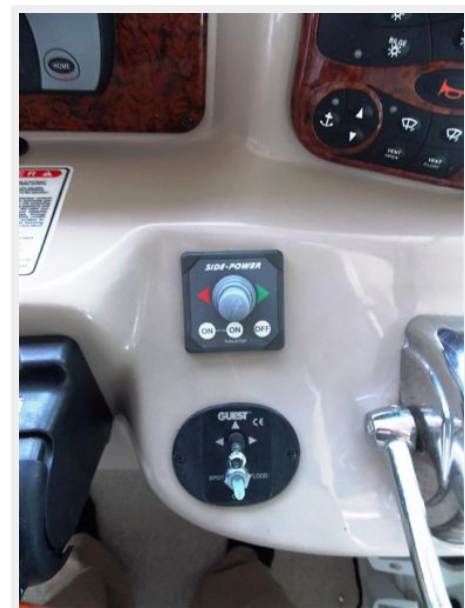
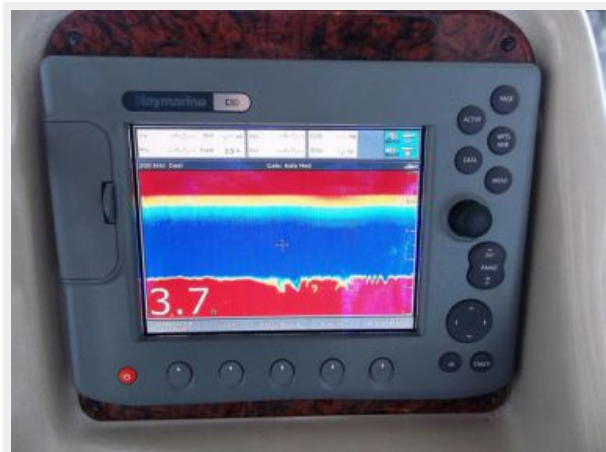
VHF with Splitscreen Function of C80

Radar



Spotlight Control

Bottom Finder



Bow Thrusters



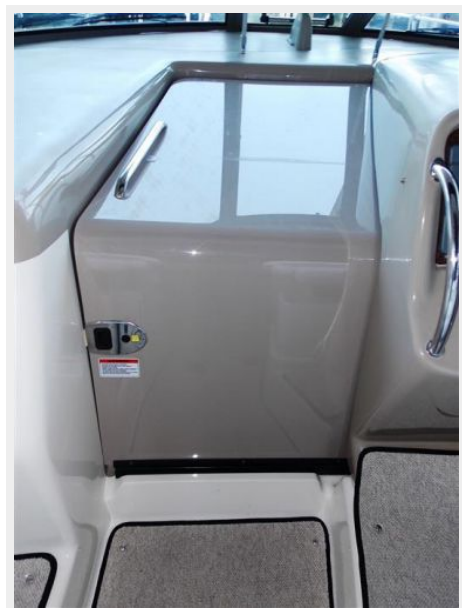
Helm Seats



Helm Carpet



Cabin Entry Door



Cockpit 2



Cockpit 3



Cockpit Table



Cockpit



New Cockpit Carpet



Port Cockpit



DVD Player in Cockpit TV



Upgraded Factory MOMO Sound System



Cockpit Carpet



MOMO Audio Subwoofer



Cockpit Ice maker



Cockpit Sink



Teak Table Cover



Forward Facing Helm Chair



Engine Room



Like New Engine Room



Port Engine



Starboard Engine



Wine Cooler



(2) rod Holders



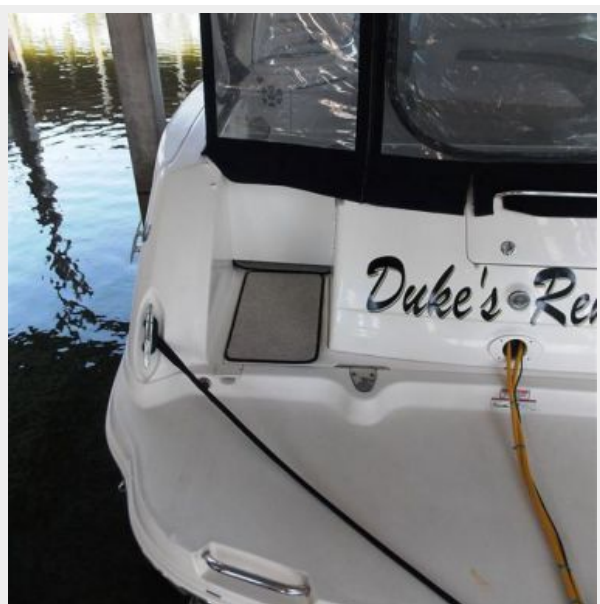
Port View



Stern View



Transom Door



Wide Swim Platform



Underwater Lights - (Reflection)



Radar Dome



Forward Deck



Layout of 340



CONTACTS

Andrey Shestakov, leading yacht broker of the sales department of Shestakov Yacht Sales Inc. Shestakov Yacht Sales Inc., the official representative of the Miami/Fort Lauderdale FL headquarters.

Contact details

Email: **andrey@shestakovyachtsales.com**

Web: shestakovyachtsales.com/en/

Telephones

USA: **+1(954)274-4435**

Office hours

Monday – Saturday: **9:00 - 21:00 EDT**

Sunday: **closed**

Address



Harbour Towne Marina, 850 NE 3rd St,
STE 213, Dania, FL 33004