

SYBARITE — INTREPID



Builder: INTREPID

Year Built: 1998

Model: Center Console

Price: PRICE ON APPLICATION

Location: United States

LOA: 33' 9" (10.29m)

Beam: 10' 0" (3.05m)

Min Draft: 5' 4" (1.63m)

Max Draft: 5' 6" (1.68m)

Cruise Speed: 25 Kts. (29 MPH)

Max Speed: 42 Kts. (48 MPH)

Our experienced yacht broker, Andrey Shestakov, will help you choose and buy a yacht that best suits your needs **SYBARITE — INTREPID** from our catalogue. Presently, at Shestakov Yacht Sales Inc., we have a wide variety of yachts available on our sale's list. We also work in close contact with all the big yacht manufacturers from all over the world.

If you would like to buy a yacht **SYBARITE — INTREPID** or would like help answering any questions concerning purchasing, selling or chartering a yacht, please call **+1(954)274-4435**

TABLE OF CONTENTS

TABLE OF CONTENTS	2
SPECIFICATIONS	5
Basic Information	5
Dimensions	5
Speed, Capacities and Weight	5
Accommodations	5
Hull and Deck Information	6
Engine Information	6
DETAILED INFORMATION	7
Walkthrough	7
Cabin	7
Head	7
Bow Area	7
Helm Area	7
Cockpit	8
Electrical	8
Please Note:	8
Remarks	8
Exclusions	9
Exclusions	9
Disclaimer	9
PHOTOS	10
Cabin Looking Forward	10
Galley	10
Galley	10
New Fridge	10
New Fridge	10
Electric Panel	10

Head	11
Bow	11
Windlass	11
Side Deck	11
Looking Aft	11
Looking Forward	11
T Top	12
Portside Seat	12
Starboard Side Seat	12
Helm Seat	12
Helm	12
Helm	12
Plotter Function	13
Radar Function	13
Helm	13
Radome	13
Electric Helm Seat	13
Under Deck Box	13
Fish Table	14
Aft Seat	14
Aft Seat	14
Covered Engine	14
Custom Painted Engine	14
Transom	14
Stern	15
Cockpit	15
CONTACTS	16
Contact details	16
Telephones	16

Office hours	16
Address	16

SPECIFICATIONS

Basic Information

Category: Center Console

Sub Category: Walk-around

Model Year: 1998

Year Built: 1998

Country: United States

Vessel Top: Half Tower

Cockpit: Yes

Dimensions

LOA: 33' 9" (10.29m)

LOD: 33' 9" (10.29m)

Beam: 10' 0" (3.05m)

Min Draft: 5' 4" (1.63m)

Max Draft: 5' 6" (1.68m)

Clearance: 9' 6" (2.90m)

MFG Length: 33' 9" (10.29m)

Speed, Capacities and Weight

Cruise Speed: 25 Kts. (29 MPH)

Cruise Speed RPM: 3500 Kts.

Max Speed: 42 Kts. (48 MPH)

Max Speed RPM: 5500 Kts.

Water Capacity: 35 Gallons

Holding Tank: 10 Gallons

Fuel Capacity: 299 Gallons

Accommodations

Total Cabins: 1

Total Berths: 2

Sleeps: 2

Total Heads: 1

Hull and Deck Information

Hull Material: Fiberglass

Hull Finish: Plastic

Hull Designer: Intrepid

Engine Information

Engines: 2

Manufacturer: Suzuki

Model: 4 S

Engine Type: Outboard

Fuel Type: Gas

DETAILED INFORMATION

Walkthrough

Just forward of the integral bracket mounted four stroke outboards is a full transom. Next forward is the intrepid supplied removable rear seat. Further forward is an electrically adjustable helm seat for two. In the backrest of the helm seat are four rod holders and four cup holders plus a lockable tackle center.

The helm is next forward. Forward at the helm is an L shaped seat with removable cushions to starboard and a small seat to port.

Centerline is the lockable hatch leading to the cabin.

The cabin has a small Galley and enclosed Head, a U shaped settee and a cushion forward for sleeping.

The steps either side of the helm lead to the Foredeck area.

Cabin

Fiberglass nonskid sole 7000 BTU Marine Air w/digital controls Magic Chef microwave Norcold 12V/120 volt stainless front refrigerator (2/14) Pioneer interior stereo speaker SS Marine water heater Stainless steel sink w/new spray faucet Interior lighting (3) Double door sliding storage cabinets Under sink cabinet Cabin fan CO detector U shaped settee

Head

Fiberglass nonskid sole Raritan electric toilet Stainless steel sink New chrome faucet w/pullout wand as shower (2) Sliding mirrored cabinet doors GFCI outlet Y valve for toilet Lockable Head door

Bow Area

Molded bow pulpit w/stainless anchor chute Fiberglass nonskid deck Welded aluminum bow rail Lewmar V 700 rope/chain windlass 18' ¼" chain, 120' ½" nylon rode (2) Windlass deck switches Delta 22 lb. Plow anchor Two steps port & starboard to side deck International Navigation lights Secondary Fluke type anchor w/chain leader & line Curved Venturi windshield Large opening deck hatch (4) Opening portholes

Helm Area

Two person bench helm seat w/electric fore & aft adjustment Lockable overhead electronics box Garmin 3010 multifunction display Chart chips for Florida/Bahamas Garmin Network expansion module Garmin sounder module Garmin GMR 4C Radome Airmar 50/200 – 600 thru hull bronze transducer Kenwood AM/FM/CD/Sat stereo KDC BT755HD w/remote Sirius Sat receiver Sony & Pioneer amplifiers Xploder 10" Sony Subwoofer Sony & Pioneer exterior speaker Garmin Sat weather module Trim tab controls Icom M-59 VHF w/8' antenna Icom M-59 VHF w/8' antenna Windlass remote controls at helm Light on underside of electronics box Ritchie 4" compass Yamaha gauge package Tach (2), speed, fuel management Suzuki alarm panels 12 Volt cigarette lighter accessory outlet Yamaha engine controls w/power tilt Sea Star helm wheel Helm seat cover Console cover to windshield TR1 Gladiator autopilot (not installed) Electric horn

Cockpit

Fiberglass nonskid sole (2) Underdeck lockable fish boxes w/macerators (2) Hatches to centerline bilge aft Removable Intrepid rear bench seat Custom mounted mooring cleats on transom Intrepid hawse pipes & stern cleats inboard (2) Rule bilge pumps aft Cable TV inlet Freshwater shower fixture Salt water wash down system Freshwater wash down Macerator pump for forward fish box Sea Star dual cylinder steering system Telescoping stainless steel swim ladder 10 Gallon black water tank Auxiliary fuel tank (51 gallons) (4) Flush rod holders at helm seat (4) Cup holders at helm seat Under gunwale rod holders, (3) port, (3) starboard 30 Amp shore cord inlet Removable sun shade top to transom Bennett trim tab system Intrepid arch style pipe top w/lace on canvas Removable rod holder mounted bait table (3) Fenders McGaurd prop locks (4) Blade SS 15 x 22 props Fireboy Halon system (3) Spreader lights Engine covers

Electrical

12 Volt DC system 120 Volt AC system Promariner Pro Sport 12 dual bank battery charger (2) Interstate batteries (2) Perko battery switches Galvanic isolator Bonding system w/transom zinc AC electrical panel w/analog voltmeter & (8) breaker protected circuits Reverse polarity alarm

Please Note:

Owner retiring from boating! Extra equipment at no additional cost:

Large fiberglass dock box (2) 16' Dock whips Extra PFD's (2) Fishing rods/reels Gaff Life raft (expired) EPIRB (battery expired)

Remarks

Bottom recently painted Inside stored till sold! Owned by a long time yachtsman who has moved down in boat size several times and is now retiring from boating, serious seller!

Exclusions

While every effort was made to list all pertinent included equipment aboard SYBARITE, there are some personal belongings aboard. Prospective purchasers should assume any item not specifically mentioned herein will not convey at closing.

Exclusions

Owner's personal belongings.

Disclaimer

The Company offers the details of this vessel or yacht in good faith but cannot guarantee or warrant the accuracy of this information nor warrant the condition of the vessel. A buyer should instruct his representatives, agents, or his surveyors, to investigate such details as the buyer desires validated. This vessel or yacht is offered subject to prior sale, price change, or withdrawal without notice.

PHOTOS

Cabin Looking Forward



Galley



Galley



New Fridge



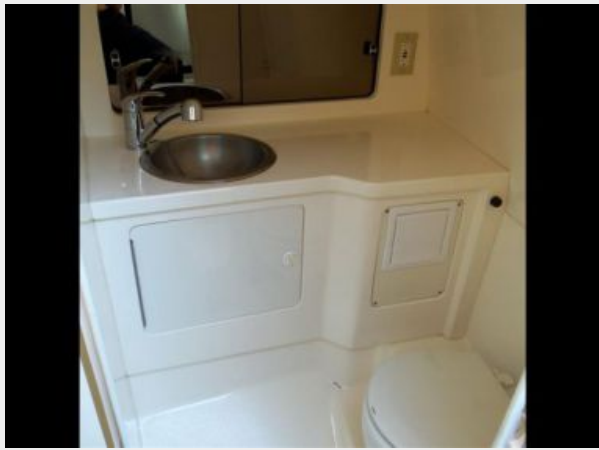
New Fridge



Electric Panel



Head



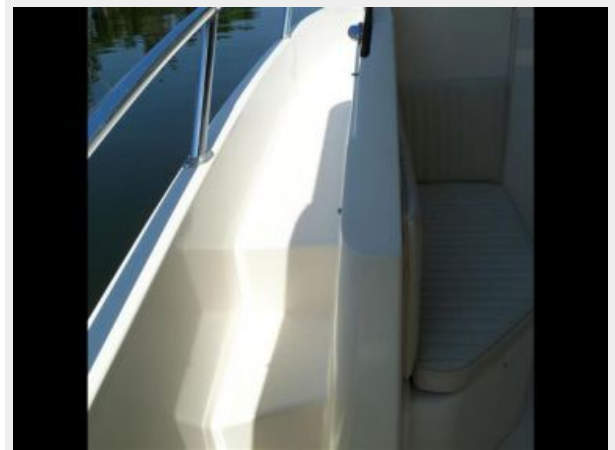
Bow



Windlass



Side Deck



Looking Aft



Looking Forward



T Top



Portside Seat



Starboard Side Seat



Helm Seat



Helm



Helm



Plotter Function



Radar Function



Helm



Radome



Electric Helm Seat



Under Deck Box



Fish Table



Aft Seat



Aft Seat



Covered Engine



Custom Painted Engine



Transom



Stern



Cockpit



CONTACTS

Andrey Shestakov, leading yacht broker of the sales department of Shestakov Yacht Sales Inc. Shestakov Yacht Sales Inc., the official representative of the Miami/Fort Lauderdale FL headquarters.

Contact details

Email: andrey@shestakovyachtsales.com

Web: shestakovyachtsales.com/en/

Telephones

USA: +1(954)274-4435

Office hours

Monday – Saturday: **9:00 - 21:00** EDT

Sunday: **closed**

Address



Harbour Towne Marina, 850 NE 3rd St,
STE 213, Dania, FL 33004