

WHITE ORCHID OF NEDD — FAIREY



Builder: FAIREY

Year Built: 1972

Model: Motor Yacht

Price: PRICE ON APPLICATION

Location: France

LOA: 30' 0" (9.14m)

Beam: 9' 6" (2.90m)

Min Draft: 3' 6" (1.07m)

Our experienced yacht broker, Andrey Shestakov, will help you choose and buy a yacht that best suits your needs **WHITE ORCHID OF NEDD — FAIREY** from our catalogue. Presently, at Shestakov Yacht Sales Inc., we have a wide variety of yachts available on our sale's list. We also work in close contact with all the big yacht manufacturers from all over the world.

If you would like to buy a yacht **WHITE ORCHID OF NEDD — FAIREY** or would like help answering any questions concerning purchasing, selling or chartering a yacht, please call **+1(954)274-4435**

TABLE OF CONTENTS

TABLE OF CONTENTS	2
SPECIFICATIONS	4
Overview	4
Basic Information	4
Dimensions	4
Speed, Capacities and Weight	4
Accommodations	4
Hull and Deck Information	4
Engine Information	5
DETAILED INFORMATION	6
Broker's Comments	6
Owner's Comments	6
Construction	7
Machinery	8
Electrical Systems	8
Plumbing Systems	9
Tankage	9
Navigation Equipment	9
Domestic Equipment	10
Accommodation	10
Deck Equipment	10
Exclusions	11
Disclaimer	11
PHOTOS	12
CONTACTS	17
Contact details	17
Telephones	17
Office hours	17

Address

17

SPECIFICATIONS

Overview

Lovely original Spearfish running on 1992-fit Mermaid 210 turbos - which run beautifully. Copper-Coat, major refit in 2008/9 including all windows and seacocks, new batteries, GPS, etc. Brand new to the market and simply wonderful.

Basic Information

Category: Motor Yacht

Model Year: 1972

Year Built: 1972

Country: France

Dimensions

LOA: 30' 0" (9.14m)

Beam: 9' 6" (2.90m)

Min Draft: 3' 6" (1.07m)

Speed, Capacities and Weight

Water Capacity: 24.039656732 Gallons

Fuel Capacity: 120.19828366 Gallons

Accommodations

Total Cabins: 1

Total Berths: 2

Total Heads: 1

Hull and Deck Information

Hull Material: GRP

Deck Material: GRP

Hull Configuration: Planing

Hull Designer: Alan V. Burnard

Engine Information

Engines: 2

Manufacturer: Mermaid Diesels

Engine Type: Inboard

Fuel Type: Diesel

DETAILED INFORMATION

Broker's Comments

A super-practical classic from Fairey Marine – with elegant lines taken from the Huntsman 31, a long open cockpit, saloon with two berths, separate heads and a galley. Exceptional sea-keeping, with a long-legged cruising gait, the Spearfish looks right and is right.

Owner's Comments

Three owner's from new. My ownership since 1991. Refurbished 1991/2 and 2008/9.

The 2008/9 refurbishment was undertaken by Hamble Yacht Services and included:

- Windows, hatch and windscreen resealed; New windscreen fitted (2014) without Kent Clear-screens.
- New seacocks throughout.
- Bottom sandblasted, epoxied and antifouled.
- Topsides properly polished (original).
- New sprayhood/cockpit cover.
- Cockpit wood work revarnished.
- Engine access hatches rebuilt and re-covered.
- New engine flexible fuel lines.
- New shafts.
- New seals and cutless bearings.
- Refurbished and balanced props.
- Reconditioned turbos.
- New batteries.
- New Garmin GPS.
- New speedo (replaces original mechanical speedo).

- New liferaft.
- New fire extinguishers.

In 2011/12 the bottom was stripped and copper coated, the rubbing strake was reset and the mast was revarnished. Anode bolts were renewed. The fuel tank was professionally cleaned and the fuel polished.

This Spearfish has been in use on the West coast of Scotland, on the South coast of England, based on the Beaulieu river, but with trips to the West Country, and latterly in the South of France where apart from coastal trips, she went to Corsica and back. In all, during my ownership, she has covered rather more than 8000nm. In the early days when the family was younger the children could sleep under the cockpit cover with my wife and myself in the cabin. She was in full commission in 2012 for spectating the J Class races on the Solent.

We have had enormous pleasure over the years and are only selling because I have now substantially retired from business activities and my wife and I are spending time cruising for longer periods, and we need a liveaboard rather than a weekend/picnic boat. The boat has its original layout and is clean & tidy.

Note: As of the 16/02/2015 WHITE ORCHID is fully commissioned and located in and around the South of France.

Construction

RCD Status: Our understanding is that the yacht is exempt from the essential safety requirements of Directive 94/25EC (Recreational Craft Directive) as she was built and placed into use within the EU prior to 1998.

Hull, Deck & Superstructure Construction:

- Standard white topsides with ice blue superstructure.
- Bathing ladder.
- Windows, hatch resealed (2008/9). New windscreen fitted (2014) without Kent Clear-screens.

- Bottom sandblasted, epoxied and antifouled (2008/09).
- Deck and superstructure re-painted in Awlgrip Ice Blue by HYS (2014).
- Topsides properly polished (original) (2008, 2009 and 2014).
- New sprayhood/cockpit cover (2008/9).
- Cockpit wood work revarnished (2008/9).
- In 2011/12 the bottom was stripped and copper coated, the rubbing strake was reset and the mast was revarnished. Anode bolts were renewed.

Machinery

Engine & Gearboxes:

- 2 x Mermaid 210hp turbo diesel engines (1992).
- Engine access hatches rebuilt and re-covered (2008/9).
- New engine flexible fuel lines (2008/9).
- Reconditioned turbos (2008/9).

Maintenance & Performance:

- Engine Hours: c. 430 hours.

Propulsion & Steering:

- New shafts (2008/9).
- New seals and cutless bearings (2008/9).
- Refurbished and balanced props (2008/9).
- New chromed Morse controls (2014).

Electrical Systems

Voltage Systems:

- 24V ships system.

Battery Banks:

- New batteries (2008/9).

Battery Chargers:

- Battery charger.

Plumbing Systems

Fresh Water & Water Heating System:

- Manual fresh water to galley sink and heads basin

Bilge Pumps:

- Manual bilge pump.

Tankage

Fuel:

- Approx. 100 gallons.

Fresh water:

- Approx. 20 gallons.

Navigation Equipment

- B&G Speed, depth, trip etc.
- Navico VHF.
- New Garmin GPS (2008/9).

- New speedo (replaces original mechanical speedo) (2008/9).

Domestic Equipment

Galley:

- 2-burner gas cooker.

Heads/Showers:

- Thetford chemical WC.

Lighting:

- Lighting throughout accommodation.

Accommodation

Summary of Accommodation:

- Cockpit and interior cushions in dark blue canvas with white piping.
- Striped towel covers for cockpit cushions available.
- Small picnic table for cockpit.

Deck Equipment

Anchoring & Mooring Equipment:

- CQR anchor with chain and warp.
- Small Danforth with chain and warp.
- Various other warps.
- Fenders.

Covers, Canvas & Cushions:

- Tonneau cover.
- Bimini.
- Sprayhood.
- Overall cockpit cover.

Safety Equipment:

- Liferaft (2008/9).

Fire-fighting equipment:

- New fire extinguishers (2008/9).

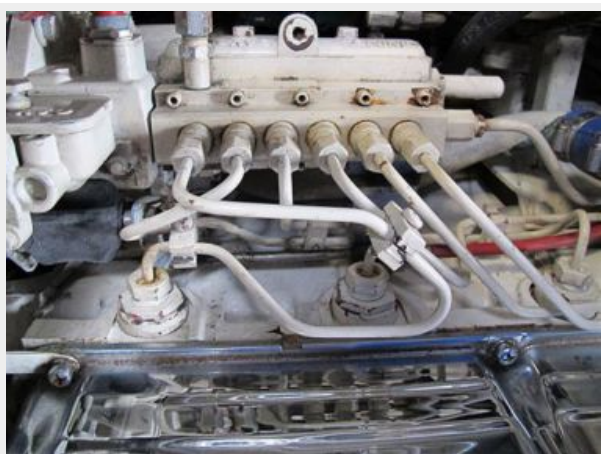
Exclusions

Owner's personal belongings.

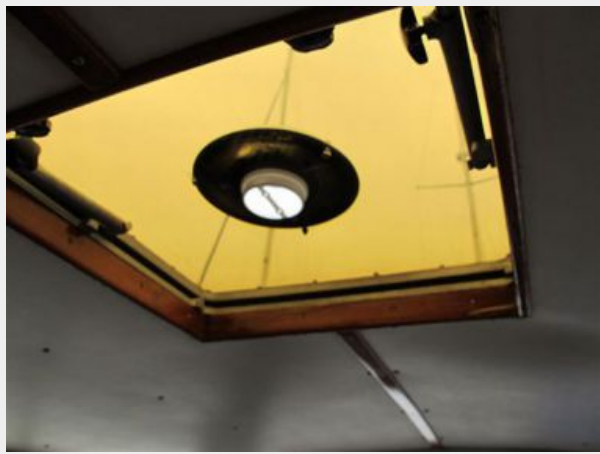
Disclaimer

The Company offers the details of this vessel or yacht in good faith but cannot guarantee or warrant the accuracy of this information nor warrant the condition of the vessel. A buyer should instruct his representatives, agents, or his surveyors, to investigate such details as the buyer desires validated. This vessel or yacht is offered subject to prior sale, price change, or withdrawal without notice.

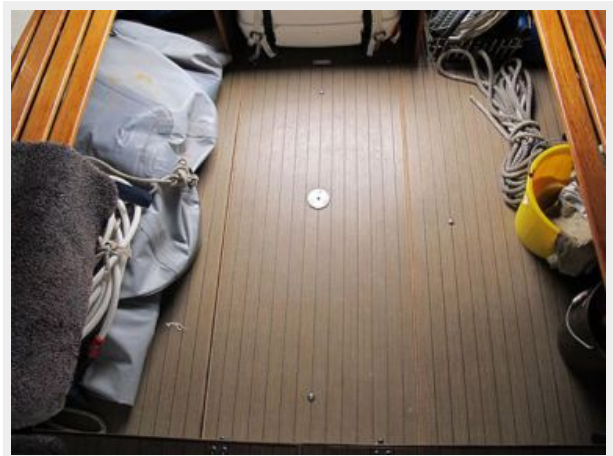
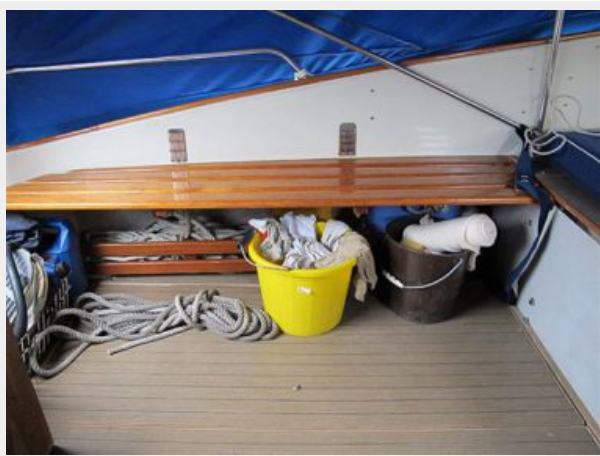
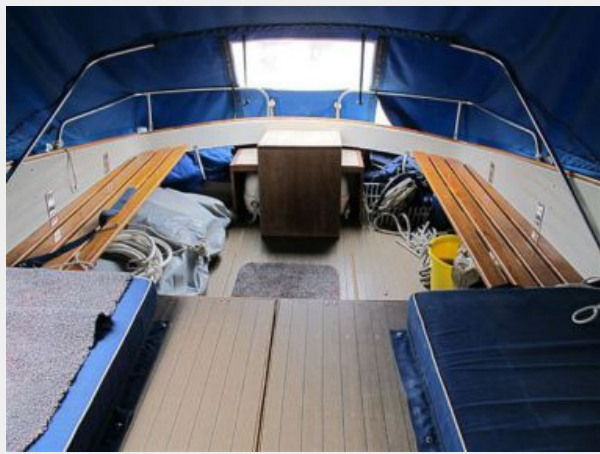
PHOTOS











CONTACTS

Andrey Shestakov, leading yacht broker of the sales department of Shestakov Yacht Sales Inc. Shestakov Yacht Sales Inc., the official representative of the Miami/Fort Lauderdale FL headquarters.

Contact details

Email: andrey@shestakovyachtsales.com

Web: shestakovyachtsales.com/en/

Telephones

USA: +1(954)274-4435

Office hours

Monday – Saturday: **9:00 - 21:00** EDT

Sunday: **closed**

Address



Harbour Towne Marina, 850 NE 3rd St,
STE 213, Dania, FL 33004