

RAMBLER — GRAND BANKS



Builder: GRAND BANKS

Year Built: 1995

Model: Cruiser

Price: PRICE ON APPLICATION

Location: United States

LOA: 42' 0" (12.80m)

Beam: 14' 1" (4.29m)

Min Draft: 4' 2" (1.27m)

Cruise Speed: 12 Kts. (14 MPH)

Max Speed: 15 Kts. (17 MPH)

Our experienced yacht broker, Andrey Shestakov, will help you choose and buy a yacht that best suits your needs **RAMBLER — GRAND BANKS** from our catalogue. Presently, at Shestakov Yacht Sales Inc., we have a wide variety of yachts available on our sale's list. We also work in close contact with all the big yacht manufacturers from all over the world.

If you would like to buy a yacht **RAMBLER — GRAND BANKS** or would like help answering any questions concerning purchasing, selling or chartering a yacht, please call **+1(954)274-4435**

TABLE OF CONTENTS

TABLE OF CONTENTS	2
SPECIFICATIONS	4
Overview	4
Basic Information	4
Dimensions	4
Speed, Capacities and Weight	4
Accommodations	4
Hull and Deck Information	5
Engine Information	5
DETAILED INFORMATION	6
Layout	6
Electronics	6
Electrical	6
Mechanical	7
Hull and Deck	7
Broker Comments	7
Exclusions	7
Exclusions	7
Disclaimer	7
PHOTOS	8
Salon	8
Salon Aft	8
Salon L-Settee	8
Bar With Ice Maker	8
Bar	8
Entertainment	8
Galley	9
Refer	9

Master Cabin	9
Master	9
Island Queen	9
Master Head	9
Master Shower	10
Guest Cabin	10
Guest Head	10
Helm	10
FB L-Settee	10
Helm Seating	10
Engine Room	11
Windlass	11
CONTACTS	12
Contact details	12
Telephones	12
Office hours	12
Address	12

SPECIFICATIONS

Overview

RAMBLER has had two owners over her life each exhibiting comprehensive care and maintenance. She has cruised reliably throughout New England, Florida and the Bahamas bringing her party much pleasure. Her owners would like to see a caring new family continue the voyage.

Basic Information

Category: Cruiser

Model Year: 1995

Year Built: 1995

Country: United States

Dimensions

LOA: 42' 0" (12.80m)

Beam: 14' 1" (4.29m)

Min Draft: 4' 2" (1.27m)

Clearance: 22' 6" (6.86m)

Speed, Capacities and Weight

Cruise Speed: 12 Kts. (14 MPH)

Max Speed: 15 Kts. (17 MPH)

Displacement: 34000 Pounds

Gross Tonnage: 34000 Pounds

Water Capacity: 71 Gallons

Holding Tank: 30 Gallons

Fuel Capacity: 600 Gallons

Accommodations

Total Cabins: 2

Sleeps: 6

Total Heads: 2

Hull and Deck Information

Hull Material: Fiberglass

Deck Material: Teak and Fiberglass

Hull Configuration: Semi-Displacement

Hull Designer: Ken Smith

Exterior Designer: Grand Banks

Interior Designer: Grand Banks

Engine Information

Engines: 2

Manufacturer: Caterpillar

Model: 3208TA

Engine Type: Inboard

Fuel Type: Diesel

DETAILED INFORMATION

Layout

This GB42 Classic offers the most popular two stateroom, two head layout. Upon entering the vessel from either port or starboard doors, you arrive on the main deck with galley on the port side and helm to starboard. Aft of the helm on the starboard side is an L-shaped sofa with teak oval table with drop leaves and storage. Across to port is the entertainment center with TV, DVD and Receiver and a double settee which converts to a single bunk. The master is down and aft and the guest stateroom is forward. Each of the master and guest cabins have en-suite heads w/showers. The salon is spacious and airy with excellent ventilation and visibility. There is a bar with icemaker, glass and bottle storage. The decor is dark green Ultra Suede with classic GB beige curtains. The interior is finished in varnished Teak joinery and parquet soles. The galley has a custom L-shape as opposed to the straight single counter. This creates valuable additional counter space. The Kenyon electric stove was refurbished in 2013. There is a Princess Microwave, and U-Line icemaker. The refrigeration boxes are stainless steel lined and insulated refrigeration box by Grunnert as well as a stainless steel lined and insulated freezer box by with Grunnert holding plates. There is a stainless steel sink w/ Brita water filter system. Storage space is more than adequate. Aft and below three steps is the master stateroom, which is full beam. There is a centerline island queen bunk. Hanging lockers are cedar lined. The GB signature aft companionway provides added natural light and ventilation. The guest cabin is forward with v-berth and filler cushion. There is a large hanging locker and numerous drawers and lockers. The en-suite head includes shower and Sealand Vacuflush head. There's a deck hatch with screen and good natural light and ventilation. The bridge offers excellent visibility, seating and storage.

Electronics

• Furuno 24 mile radar w/ 10" display • Garmin 710 GPS Color Plotter (FB)(New 2005) • Furuno NavNet VX2 color plotter/radar (FB)(New 2005) • Robertson AP300 AP (Dual) • Icom M126 DSC VHF (2) (Dual) • Dataline waypoint position indicator (Dual) • Dataline speed/tem/depth w/ bronze transducer (Dual) • Dataline analog wind (2) (Dual) (Inoperative Masthead unit) • Dataline data box • Co2 Alarms • High water alarms • ACR RCL 100 remote spotlight(Inoperative Light Fixture) • Loudhailer w/ horn • Trim Tabs

Electrical

The AC/DC electrical panel is on the helm console. • 24v/50 Amp Shore power w/ 50' cord w/ bow and stern hookups • 12v/dc Ship's power • 3- 8D batteries (new 2011) • Battery charger(new Xantrex 2012) • AC/DC distribution panel • Navigation lights 12v/DC • AC & DC outlets throughout • Marine Air/heat units (3 zone) • Vacuflush Heads

Mechanical

• T/CAT 3208 TA @ 375 HP each • Twin Disc 2:54:1 gears • Onan 8.0 Kw Genset • Oil Change System • Sea Recovery Watermaker(Inoperative in dormant state, requires new Membranes)

Hull and Deck

• Teak decks • Steadying mast w/ boom and winch • Avon RIB w/ 15 HP Yamaha • SS chocks for tender • Teak hand rails and cap rails as well as teak varnished transom • Navy Bimini Top (Sunbrella) • Full enclosure FB • FB weather cloths • Lofrans anchor windlass w/ bow and helm controls • Plow anchor w/200' chain • Plow anchor w/ 200' rode • Canvas covers for all varnished rails as well as transom • Spare props & Parts • Bottom Paint and Zincs refreshed (2014)

Broker Comments

RAMBLER has had two owners over her life each exhibiting comprehensive care and maintenance. She has cruised reliably throughout New England, Florida and the Bahamas bringing her party much pleasure. Her owners would like to see a caring new family continue the voyage.

Exclusions

Owner's personal belongings, art work, tools, loose galley items. Any item not stated in the listing inventory should be considered excluded.

Exclusions

Owner's personal belongings.

Disclaimer

The Company offers the details of this vessel or yacht in good faith but cannot guarantee or warrant the accuracy of this information nor warrant the condition of the vessel. A buyer should instruct his representatives, agents, or his surveyors, to investigate such details as the buyer desires validated. This vessel or yacht is offered subject to prior sale, price change, or withdrawal without notice.

PHOTOS

Salon



Salon Aft



Salon L-Settee



Bar With Ice Maker



Bar



Entertainment



Galley



Refer



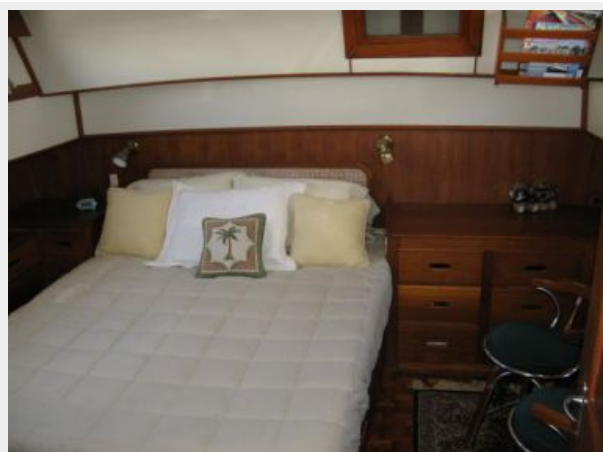
Master Cabin



Master



Island Queen



Master Head



Master Shower



Guest Cabin



Guest Head



Helm



FB L-Settee



Helm Seating



Engine Room



Windlass



CONTACTS

Andrey Shestakov, leading yacht broker of the sales department of Shestakov Yacht Sales Inc. Shestakov Yacht Sales Inc., the official representative of the Miami/Fort Lauderdale FL headquarters.

Contact details

Email: andrey@shestakovyachtsales.com

Web: shestakovyachtsales.com/en/

Telephones

USA: +1(954)274-4435

Office hours

Monday – Saturday: **9:00 - 21:00** EDT

Sunday: **closed**

Address



Harbour Towne Marina, 850 NE 3rd St,
STE 213, Dania, FL 33004