

LITTLE NO-JO — SILVERTON



Builder: SILVERTON

Year Built: 2001

Model: Motor Yacht

Price: PRICE ON APPLICATION

Location: United States

LOA: 35' 0" (10.67m)

Beam: 13' 0" (3.96m)

Max Draft: 3' 3" (0.99m)

Our experienced yacht broker, Andrey Shestakov, will help you choose and buy a yacht that best suits your needs **Little No-Jo — SILVERTON** from our catalogue. Presently, at Shestakov Yacht Sales Inc., we have a wide variety of yachts available on our sale's list. We also work in close contact with all the big yacht manufacturers from all over the world.

If you would like to buy a yacht **Little No-Jo — SILVERTON** or would like help answering any questions concerning purchasing, selling or chartering a yacht, please call **+1(954)274-4435**

TABLE OF CONTENTS

TABLE OF CONTENTS	2
SPECIFICATIONS	5
Overview	5
Basic Information	5
Dimensions	5
Speed, Capacities and Weight	5
Accommodations	6
Hull and Deck Information	6
Engine Information	6
DETAILED INFORMATION	7
Accommodations	7
Electronic & Navigation Equipment	8
Engine Room & Mechanical	8
Electrical Systems	8
Deck & Construction	8
Manufacturer Provided Description	9
Disclaimer	9
Exclusions	9
Disclaimer	9
PHOTOS	11
Master	11
Salon	11
Guest Stateroom	11
Profile 2	11
Transom	12
Aft Deck	12
Aft Deck Wetbar	12
Aft Deck 2	12

Bridge	13
Helm Seating	13
Bridge Seating	13
Bridge 2	13
Electronics	13
Helm	13
Bridge Looking Aft	14
Salon 2	14
Salon Sofa	14
Salon 3	14
Salaon Looking Aft	14
Galley	14
Master 2	15
Master Berth	15
Master Head	15
Master Shower	15
Master Vanity	16
Cedar Lined Lockers	16
Generator & Tank Access	16
Engine Access	16
Engine Room	17
Engine 1	17
Engine 2	17
Dripless Shaft Seals	17
Generator in Sound Shield	17
Layout	17
Manufacturer Provided Image	18
At Dock	18
Fresh Wax June 2	18

Fresh Wax June	18
CONTACTS	19
Contact details	19
Telephones	19
Office hours	19
Address	19

SPECIFICATIONS

Overview

This clean low hour (under 400hrs!) Silverton Motoryacht features two spacious staterooms each with their own head. The aft cabin design offers maximum privacy between the staterooms and the salon benefits from the full beam design making it much larger than most motoryachts in this size range. Easy foredeck access from the flybridge makes moving about the outside of the boat a breeze for line handling or sunning on the bow. The aft deck becomes a great "back porch" to watch a sunset from and the boat is set up nicely for cruising, entertaining or even extended stays on board. All this in a 35 footer with an owner who has priced the boat aggressively and is ready to sell!

Conveniently located in Baltimore's Inner Harbor, just minutes off of Interstate 95 and only 20-25 minutes from Baltimore Washington International Airport (BWI). Please give me a call to set up a time to come see the very versatile and spacious boat today!

Basic Information

Category: Motor Yacht

Sub Category: Aft Cabin

Model Year: 2001

Year Built: 2001

Country: United States

Dimensions

LOA: 35' 0" (10.67m)

Beam: 13' 0" (3.96m)

Max Draft: 3' 3" (0.99m)

Speed, Capacities and Weight

Water Capacity: 100 Gallons

Holding Tank: 68 Gallons

Fuel Capacity: 286 Gallons

Accommodations

Total Cabins: 2

Total Berths: 2

Total Heads: 2

Hull and Deck Information

Hull Material: Fiberglass

Engine Information

Engines: 2

Manufacturer: Crusader

Model: 7.4L

Engine Type: Inboard

Fuel Type: Gas/Petrol

DETAILED INFORMATION

Accommodations

Boarding the Silverton 352 is a breeze thanks to wide molded stairs with hand rail that lead up from the swim platform to the aft deck. Once on the aft deck you will notice a hardtop with full enclosure allowing for this space to be used in all types of weather. With a built in wetbar, sink and icemaker entertaining is a snap and there is an abundance of seating both on this deck and around the helm. The helm deck is just two steps up from the aft deck so these areas flow together nicely while still giving the captain a commanding view underway. Silverton's unique "side walk" design provides for a full beam salon below the helm deck and makes moving forward to the bow a breeze from this area.

Going inside the boat most people are pleasantly surprised with how much room this boat has to offer. With an abundance of natural lighting and good headroom this open galley and salon arrangement has it all. There is a sofa to starboard when entering the salon with an entertainment center with flat screen TV across to port. Forward and to port is a good sized dinette and across and to starboard is a full featured galley. The stateroom arrangement with the guest stateroom being forward and the master stateroom aft provides for privacy and both staterooms feature large double berths as well as heads with stall showers!

- LCD Visio Color TV in Salon
- Sony AM/FM Stereo & CD Player in Salon
- Samsung DVD Player in Salon
- Venetian Blinds
- Recessed Lighting
- Neutral Color Ultra Leather Dinette with Wood Table
- Wall to Wall Carpeting
- Vitfrigo Dual Voltage Refrigerator/Freezer good size over-under type
- Goldstar Built In Microwave
- Two Burner Cooktop
- Corian Countertops with built in sink
- Abundant Galley Cabinets
- Galley Wood Flooring
- Marine Electric Heads
- Stall Showers with electric sump pumps
- Corian Vanities
- Hot and Cold Pressurized Water System
- Water Tank
- Hot Water Heater
- Holding Tank
- Two MarineAir Air Conditioning/Heating Units

Electronic & Navigation Equipment

- Garmin 230 GPS/Chartplotter
- Lowrance Digital Depthfinder
- Icom IC59 VHF Radio
- Ritchie Compass
- Jabsco Remote Controlled Spotlight
- Navigational Lights
- Anchor Light

Engine Room & Mechanical

With less than 400 hours on her Crusader 7.4L MPI engines she is a properly used low hour vessel with an abundance of features:

- Dripless Shaft Seals
- Freshwater Engine Cooling
- Engine Room Lighting
- Bilge Pumps
- Trim Tabs

Electrical Systems

- Kohler 7.3kw Generator with Sound Shield (417 Hours)
- Pro Tech Battery Charger
- Batteries -3
- Shore Power Connection
- Shore Power Cords - 2 30amp cords
- AC and DC System Control and Breaker Panels
- Polarity Monitor
- Volt and Amp Meters

Deck & Construction

- Anchor Windlass with control at helm
- Anchor
- Anchor chute
- Safety rails
- Swim Platform
- Swim Ladder
- Courtesy Lights

- Automatic Fire Extinguishing System
- Carbon Monoxide Detectors
- Full Canvas Enclosure with several roll up windows and screens
- Horn
- Electronics Mast
- Fender Holders
- Fenders
- Dock Lines

Manufacturer Provided Description

The Silverton 352 Motor Yacht follows the tremendously successful big sister 392. Silverton took all the features that made the 392 a hit and scaled them back to the 352. Silverton's unique SideWalk steps allow freedom of movement from the bridge to foredeck. Cumbersome ladders have been replaced by wide molded steps and a high toe kick. Sturdy oversize stainless steel rails will keep passengers safe and secure even in a seaway. The center console flybridge will accommodate a crowd, while the standard aft hardtop makes entertaining and relaxing easy.

Disclaimer

While we attempt to display current and accurate data, this listing may not reflect the most recent transactions or may contain occasional data entry errors. Selling agent makes no warranties, express or implied, regarding the content or availability of the products described herein. All inventory listed is subject to availability and prior sale. Please consult selling agent for details. Prices are quoted for the USA only and may not include transportation, taxes, or other applicable charges. Photographs may be representative only and may vary somewhat from the actual items offered for sale. We will not be responsible for inaccurate data obtained from our site. Please check with your local dealer to ensure that you have the latest information available. Information on this web site could include technical inaccuracies or typographical errors. Changes may be periodically made to the information or the products herein. Questions or comments regarding these policies may be directed to website hosting agent.

Exclusions

Owner's personal belongings.

Disclaimer

The Company offers the details of this vessel or yacht in good faith but cannot guarantee or warrant the accuracy of this information nor warrant the condition of the vessel. A buyer should instruct his representatives, agents, or his surveyors, to investigate such details as the buyer

desires validated. This vessel or yacht is offered subject to prior sale, price change, or withdrawal without notice.

PHOTOS

Salon



Master



Guest Stateroom



Profile 2



Transom



Aft Deck



Aft Deck 2



Aft Deck Wetbar



Bridge



Helm Seating



Bridge Seating



Bridge 2



Electronics



Helm



Bridge Looking Aft



Salon 2



Salon Sofa



Salon 3



Salaon Looking Aft



Galley



Master Berth



Master 2



Master Head



Master Shower



Master Vanity



Cedar Lined Lockers



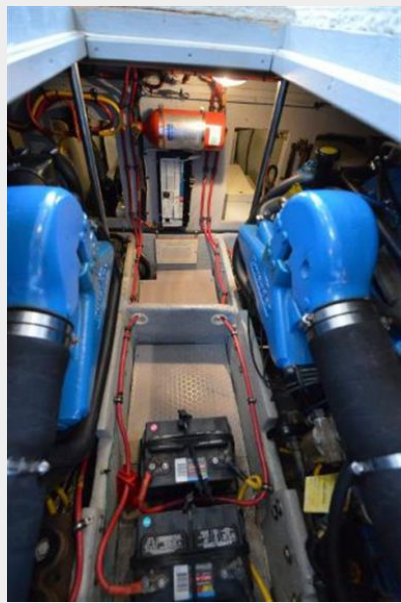
Generator & Tank Access



Engine Access



Engine Room



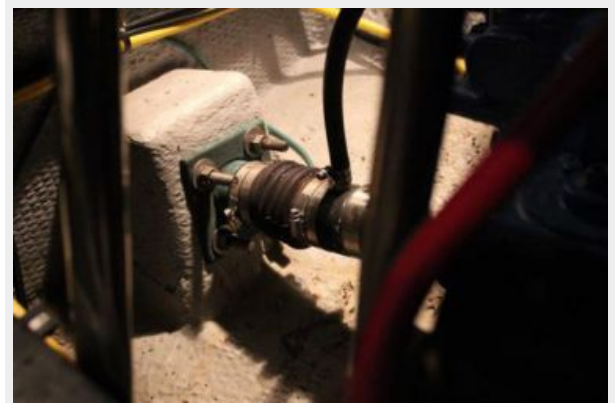
Engine 1



Engine 2



Dripless Shaft Seals



Generator in Sound Shield



Layout



Manufacturer Provided Image



At Dock



Fresh Wax June 2



Fresh Wax June



CONTACTS

Andrey Shestakov, leading yacht broker of the sales department of Shestakov Yacht Sales Inc. Shestakov Yacht Sales Inc., the official representative of the Miami/Fort Lauderdale FL headquarters.

Contact details

Email: andrey@shestakovyachtsales.com

Web: shestakovyachtsales.com/en/

Telephones

USA: +1(954)274-4435

Office hours

Monday – Saturday: **9:00 - 21:00** EDT

Sunday: **closed**

Address



Harbour Towne Marina, 850 NE 3rd St,
STE 213, Dania, FL 33004