

LITTLE NO-JO — SILVERTON



Судостроитель: SILVERTON

Год постройки: 2001

Модель: Моторная яхта

Цена: ЦЕНА ЯХТЫ ПО ЗАПРОСУ

Местонахождение: United States

Длина общая: 35' 0" (10.67m)

Ширина: 13' 0" (3.96m)

Макс. осадка: 3' 3" (0.99m)

Купить Little No-Jo — SILVERTON а также выбрать подходящую вам яхту из нашего каталога яхт вам поможет опытный яхтенный брокер Андрей Шестаков. На сегодняшний день компания Shestakov Yacht Sales Inc. имеет большое количество яхт в собственном списке продаж, а также тесно сотрудничает со всеми крупными яхтенными производителями по всему миру.

Для того чтобы купить яхту Little No-Jo — SILVERTON а также проконсультироваться по любому вопросу связанному с покупкой, продажей, чартером яхт позвоните по телефону **+7(918)465-66-44**.

ОГЛАВЛЕНИЕ

ОГЛАВЛЕНИЕ	2
ХАРАКТЕРИСТИКИ	5
Обзор	5
Основная информация	5
Размеры	5
Скорость, вместимость и масса	5
Размещение	6
Корпус и палуба	6
Информация о двигателе	6
ПОДРОБНОЕ ОПИСАНИЕ	7
Accommodations	7
Electronic & Navigation Equipment	8
Engine Room & Mechanical	8
Electrical Systems	8
Deck & Construction	8
Manufacturer Provided Description	9
Disclaimer	9
Исключения	9
Отказ от ответственности	9
ФОТОГРАФИИ	11
Master	11
Salon	11
Guest Stateroom	11
Profile 2	11
Transom	12
Aft Deck	12
Aft Deck Wetbar	12
Aft Deck 2	12

Bridge	13
Helm Seating	13
Bridge Seating	13
Bridge 2	13
Electronics	13
Helm	13
Bridge Looking Aft	14
Salon 2	14
Salon Sofa	14
Salon 3	14
Salaon Looking Aft	14
Galley	14
Master 2	15
Master Berth	15
Master Head	15
Master Shower	15
Master Vanity	16
Cedar Lined Lockers	16
Generator & Tank Access	16
Engine Access	16
Engine Room	17
Engine 1	17
Engine 2	17
Dripless Shaft Seals	17
Generator in Sound Shield	17
Layout	17
Manufacturer Provided Image	18
At Dock	18
Fresh Wax June 2	18

Fresh Wax June	18
КОНТАКТЫ	19
Контактная информация	19
Телефоны	19
Время работы	19
Адрес	19

ХАРАКТЕРИСТИКИ

Обзор

This clean low hour (under 400hrs!) Silverton Motoryacht features two spacious staterooms each with their own head. The aft cabin design offers maximum privacy between the staterooms and the salon benefits from the full beam design making it much larger than most motoryachts in this size range. Easy foredeck access from the flybridge makes moving about the outside of the boat a breeze for line handling or sunning on the bow. The aft deck becomes a great "back porch" to watch a sunset from and the boat is set up nicely for cruising, entertaining or even extended stays on board. All this in a 35 footer with an owner who has priced the boat aggressively and is ready to sell!

Conveniently located in Baltimore's Inner Harbor, just minutes off of Interstate 95 and only 20-25 minutes from Baltimore Washington International Airport (BWI). Please give me a call to set up a time to come see the very versatile and spacious boat today!

Основная информация

Тип судна: Моторная яхта

Подкатегория: Aft Cabin

Модельный год: 2001

Год постройки: 2001

Страна: United States

Размеры

Длина общая: 35' 0" (10.67m)

Ширина: 13' 0" (3.96m)

Макс. осадка: 3' 3" (0.99m)

Скорость, вместимость и масса

Вместимость воды: 100 Gallons

Вместимость сточного бака: 68 Gallons

Объем топливного бака: 286 Gallons

Размещение

Всего кают: 2

Всего коек: 2

Всего ком. состава: 2

Корпус и палуба

Материал корпуса: Fiberglass

Информация о двигателе

Двигатели: 2

Производитель: Crusader

Модель: 7.4L

Тип двигателя: Inboard

Тип топлива: Gas/Petrol

ПОДРОБНОЕ ОПИСАНИЕ

Accommodations

Boarding the Silverton 352 is a breeze thanks to wide molded stairs with hand rail that lead up from the swim platform to the aft deck. Once on the aft deck you will notice a hardtop with full enclosure allowing for this space to be used in all types of weather. With a built in wetbar, sink and icemaker entertaining is a snap and there is an abundance of seating both on this deck and around the helm. The helm deck is just two steps up from the aft deck so these areas flow together nicely while still giving the captain a commanding view underway. Silverton's unique "side walk" design provides for a full beam salon below the helm deck and makes moving forward to the bow a breeze from this area.

Going inside the boat most people are pleasantly surprised with how much room this boat has to offer. With an abundance of natural lighting and good headroom this open galley and salon arrangement has it all. There is a sofa to starboard when entering the salon with an entertainment center with flat screen TV across to port. Forward and to port is a good sized dinette and across and to starboard is a full featured galley. The stateroom arrangement with the guest stateroom being forward and the master stateroom aft provides for privacy and both staterooms feature large double berths as well as heads with stall showers!

- LCD Visio Color TV in Salon
- Sony AM/FM Stereo & CD Player in Salon
- Samsung DVD Player in Salon
- Venetian Blinds
- Recessed Lighting
- Neutral Color Ultra Leather Dinette with Wood Table
- Wall to Wall Carpeting
- Vitrifrigo Dual Voltage Refrigerator/Freezer good size over-under type
- Goldstar Built In Microwave
- Two Burner Cooktop
- Corian Countertops with built in sink
- Abundant Galley Cabinets
- Galley Wood Flooring
- Marine Electric Heads
- Stall Showers with electric sump pumps
- Corian Vanities
- Hot and Cold Pressurized Water System
- Water Tank
- Hot Water Heater
- Holding Tank
- Two MarineAir Air Conditioning/Heating Units

Electronic & Navigation Equipment

- Garmin 230 GPS/Chartplotter
- Lowrance Digital Depthfinder
- Icom IC59 VHF Radio
- Ritchie Compass
- Jabsco Remote Controlled Spotlight
- Navigational Lights
- Anchor Light

Engine Room & Mechanical

With less than 400 hours on her Crusader 7.4L MPI engines she is a properly used low hour vessel with an abundance of features:

- Dripless Shaft Seals
- Freshwater Engine Cooling
- Engine Room Lighting
- Bilge Pumps
- Trim Tabs

Electrical Systems

- Kohler 7.3kw Generator with Sound Shield (417 Hours)
- Pro Tech Battery Charger
- Batteries -3
- Shore Power Connection
- Shore Power Cords - 2 30amp cords
- AC and DC System Control and Breaker Panels
- Polarity Monitor
- Volt and Amp Meters

Deck & Construction

- Anchor Windlass with control at helm
- Anchor
- Anchor chute
- Safety rails
- Swim Platform
- Swim Ladder
- Courtesy Lights

- Automatic Fire Extinguishing System
- Carbon Monoxide Detectors
- Full Canvas Enclosure with several roll up windows and screens
- Horn
- Electronics Mast
- Fender Holders
- Fenders
- Dock Lines

Manufacturer Provided Description

The Silverton 352 Motor Yacht follows the tremendously successful big sister 392. Silverton took all the features that made the 392 a hit and scaled them back to the 352. Silverton's unique SideWalk steps allow freedom of movement from the bridge to foredeck. Cumbersome ladders have been replaced by wide molded steps and a high toe kick. Sturdy oversize stainless steel rails will keep passengers safe and secure even in a seaway. The center console flybridge will accommodate a crowd, while the standard aft hardtop makes entertaining and relaxing easy.

Disclaimer

While we attempt to display current and accurate data, this listing may not reflect the most recent transactions or may contain occasional data entry errors. Selling agent makes no warranties, express or implied, regarding the content or availability of the products described herein. All inventory listed is subject to availability and prior sale. Please consult selling agent for details. Prices are quoted for the USA only and may not include transportation, taxes, or other applicable charges. Photographs may be representative only and may vary somewhat from the actual items offered for sale. We will not be responsible for inaccurate data obtained from our site. Please check with your local dealer to ensure that you have the latest information available. Information on this web site could include technical inaccuracies or typographical errors. Changes may be periodically made to the information or the products herein. Questions or comments regarding these policies may be directed to website hosting agent.

Исключения

При продаже яхты исключаются личные вещи владельца.

Отказ от ответственности

Компания предоставляет описание судна или яхты добросовестно, но не может гарантировать точность этой информации, а также не ручается за техническое состояние. Покупатель должен проинструктировать своих агентов или оценщиков

исследовать представленную информацию более подробно, по собственному желанию. Продажа судна или яхты, изменение цены или снятие с продажи будет происходить без предварительного уведомления.

ФОТОГРАФИИ

Salon



Master



Guest Stateroom



Profile 2



Transom



Aft Deck



Aft Deck 2



Aft Deck Wetbar



Bridge



Helm Seating



Bridge Seating



Bridge 2



Electronics



Helm



Bridge Looking Aft



Salon 2



Salon Sofa



Salon 3



Salaon Looking Aft



Galley



Master Berth



Master 2



Master Head



Master Shower



Master Vanity



Cedar Lined Lockers



Generator & Tank Access



Engine Access



Engine Room



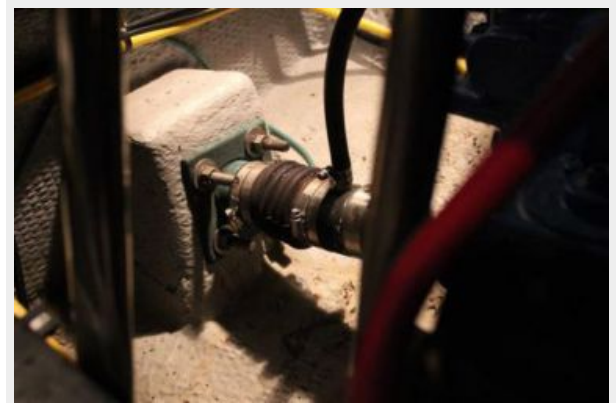
Engine 1



Engine 2



Dripless Shaft Seals



Generator in Sound Shield



Layout



Manufacturer Provided Image



At Dock



Fresh Wax June 2



Fresh Wax June



КОНТАКТЫ

Андрей Шестаков (Andrey Shestakov) – ведущий яхтенный брокер отдела продаж яхт и судов компании Shestakov Yacht Sales Inc. Официальный представитель Shestakov Yacht Sales Inc. для русскоговорящих клиентов в центральном офисе компании в Майами/Форт Лодердейл/Флорида/США.

Контактная информация

Email: andrey@shestakovyachtsales.com

Web: shestakovyachtsales.com

Телефоны

Краснодарский край: **+7(918)465-66-44**

США, Майами, Флорида: **+1(954)274-4435**

Время работы

Понедельник – Суббота: **9:00 - 21:00**
EDT

Воскресенье: **Закрито**

Адрес



Harbour Towne Marina, 850 NE 3rd St,
STE 213, Dania, FL 33004