

N'VER E — GRAND BANKS



Builder: GRAND BANKS

Year Built: 2002

Model: Motor Yacht

Price: PRICE ON APPLICATION

Location: United States

LOA: 43' 0" (13.11m)

Beam: 13' 2" (4.01m)

Min Draft: 3' 8" (1.12m)

Max Draft: 3' 8" (1.12m)

Our experienced yacht broker, Andrey Shestakov, will help you choose and buy a yacht that best suits your needs N'Ver E — GRAND BANKS from our catalogue. Presently, at Shestakov Yacht Sales Inc., we have a wide variety of yachts available on our sale's list. We also work in close contact with all the big yacht manufacturers from all over the world.

If you would like to buy a yacht N'Ver E — GRAND BANKS or would like help answering any questions concerning purchasing, selling or chartering a yacht, please call +1(954)274-4435

TABLE OF CONTENTS

TABLE OF CONTENTS	2
SPECIFICATIONS	5
Overview	5
Basic Information	5
Dimensions	5
Speed, Capacities and Weight	5
Accommodations	5
Hull and Deck Information	6
Engine Information	6
DETAILED INFORMATION	7
OVERVIEW	7
Exclusions	11
Disclaimer	11
PHOTOS	12
Galley	12
Galley	12
Salon Sofa	12
Salon	12
Salon Port	12
Salon Forward	12
Salon Starboard	13
Master Stateroom Berth	13
Head	13
Master Stateroom to Starboard	13
Shower	14
Starboard Stateroom	14
Starboard Stateroom	14
Companionway	14

Breaker Panel	15
Lower Helm Overview	15
Lower Helm	15
Lower Helm Overhead	15
Companion Seat	15
Cockpit	15
Cockpit Aft	16
Cockpit Forward	16
New Canvas 10/14	16
New Canvas 10/14	16
New Canvas 10/14	16
New Canvas 10/14	16
Cockpit	17
Generator	17
Engine Port	17
Engine Starboard	17
Engine Room	17
Engine Room	17
Engine Room	18
Engine Room	18
Engine Room	18
Flybridge Bench Seating	18
Flybridge Ladder	18
Flybridge Helm	18
Flybridge Seating	19
Flybridge Updated Electronics	19
Foredeck	19
Foredeck	19
Ground Tackle	19

Teak Swim Platform	19
Walk Around Deck	20
N'ver E Nameboard	20
CONTACTS	21
Contact details	21
Telephones	21
Office hours	21
Address	21

SPECIFICATIONS

Overview

This 43 Grand Banks/East Bay is the next to be sold. She is in great condition and features the preferred CAT 3208's with only 1900 hours. The 2 stateroom layout with split head/shower arrangement is great for long term traveling or just weekend cruising. The vessel has had many recent updates including new Garmin electronics at boat helms, new batteries, updated steering system, new water heater, A/C systems flushed, most pumps replaced, and the list goes on.

She is ready for your inspection. Her very knowledgeable owner has this vessel in shape and she is priced to move quickly. See the full specifications for a detailed listing of this vessel.

Basic Information

Category: Motor Yacht

Model Year: 2002

Year Built: 2002

Country: United States

Dimensions

LOA: 43' 0" (13.11m)

LWL: 39' 5" (12.01m)

Beam: 13' 2" (4.01m)

Min Draft: 3' 8" (1.12m)

Max Draft: 3' 8" (1.12m)

Speed, Capacities and Weight

Displacement: 34000 Pounds

Water Capacity: 110 Gallons

Holding Tank: 32 Gallons

Fuel Capacity: 450 Gallons

Accommodations

Total Cabins: 2

Total Heads: 1

Hull and Deck Information

Hull Material: Fiberglass

Engine Information

Engines: 2

Manufacturer: Caterpillar

Model: 3208

Engine Type: Inboard

Fuel Type: Diesel

DETAILED INFORMATION

OVERVIEW

Setting the standard in terms of building quality boats had been the Grand Banks way since the very beginning. With the 43 Eastbay fly bridge, that tradition continued.

This classic fast cruiser delivered speed, agility and a generous amount of living space thanks to the boat's up-top fly bridge. Of course, this boat could be piloted from the fly bridge's dual helm station or from the interior steering/navigation station.

Overall, a well-appointed cruiser that was perfect for a couple who enjoyed cruising alone or with guests

Onboard, the beauty and practicality of the yacht was evident. With its joinery of varnished teak, generously sized salon, well-appointed galley and comfortable head and shower, the 43 Fly bridge definitely fits into the luxury category.

SALON:

- Oversize helm seat
- Lebroc leather companion seat (new in 2012)
- Chart table with storage
- (3) Fixed forward windows with exterior sunscreens
- U-Line icemaker in helm seat
- Weems and Plath brass decorative clock and barometer
- Full salon windows that open with exterior sunscreens and interior screening
- Teak interior wood
- Teak and holly flooring
- Teak cup holder
- Overhead lighting system
- Overhead grab bar
- Teak valences
- Teak Hi/Low salon table
- Starboard bench sofa with underneath storage
- Barrel chair
- Kenwood stereo system
- CD changer
- Insignia 20" Flat panel salon TV
- Bottle storage

GALLEY:

- Princess (3) burner stove
- Kenmore Elite microwave oven

- Fri-Boat freezer
- Refrigerator
- Grohe faucet
- Dual bowl stainless steel sink
- Solid surface counter tops
- Dish and drawer storage
- Built in counter top pots/pans storage
- Outboard port light with curtain
- Overhead skylight/hatch
- Teak cabinetry
- Teak and holly flooring

MASTER STATE ROOM:

- Center line queen berth
- Overhead lighting
- Overhead hatch
- Marineair controls
- Zintex CO2 monitor
- (2) Hanging lockers
- Built in wood cabinets both port and starboard
- (2) Port hole windows with curtains
- Reading lights
- Oversize mirror
- Teak and holly floor

GUEST STATE ROOM:

- Upper and lower single bunks
- Pocket door
- Hanging locker
- Mirror
- Overhead hatch
- Outboard porthole window with curtainFire extinguisher
- Reading lights
- Overhead lighting

HEAD/SHOWER:

The head and shower compartments are conveniently separate from each other. The private head is to port and the separate shower compartment is directly across the companionway to starboard.

Shower compartment:

- Teak entry door

- Fiberglass shower with floor drain
- Grohe shower fixture
- Port hole window with curtain
- Teak slated shower bench
- Stainless shower bar with pull curtain

Head compartment:

- Vacuflush head
- Grohe faucet
- Solid surface counter tops
- Wall mounted mirror
- Wood towel rack
- Under counter storage
- Port hole window with curtain
- Pocket door access
- Tank monitor
- Overhead vent

ELECTRONICS/LOWER HELM:

- Garmin 7215 touchscreen Plotter/Radar/Fish Finder (New in 2012)
- Garmin GHS10 VHF radio with remote speaker (New in 2012)
- Garmin GHC10 Auto Pilot (New in 2012)
- (2) Raymarine ST60+ multi -function gauges
- ACR RCL-100 remote spotlight
- Wood ship's wheel
- Panish controls
- Side Power bow thruster controls
- Mechanical gauge package
- Compu-tank monitor
- Bennett trim tab controls
- 12v DC outlet
- 110v AC outlet
- Helm access door

ELECTRONICS/FLY BRIDGE:

- Garmin 5212 touchscreen Plotter/Radar/Fish Finder in a NAVPOD (New in 2012)
- Garmin GHC10 Auto Pilot
- Raymarine ST60+ multi -function gauge
- ACR RCL-100 remote spotlight
- Stainless steel ship's wheel
- Panish controls
- Side Power bow thruster controls

- Mechanical gauge package
- Ritchie compass
- 3 Sided fly bridge enclosure
- Bose speakers
- (2) Helm chair with footrest
- Oversize aft bench seat
- Collapsible mast
- Bimini top for fly bridge
- Bimini top for aft cockpit

DECK/COCKPIT:

- Teak cockpit decking
- Teak toe rail with covers
- Colored non-skid decks
- Full walk-around decks
- Full stainless rail package with custom forward lift rail
- Lewmar windlass
- Rocna 25 custom plow anchor and rode
- Forward deck lockers with line holders and wash-downs
- Exterior sunshades for bridge house windows
- Teak name boards
- Navigation lights
- Cockpit spreader light
- Stainless steel bridge ladder with teak steps
- Cockpit Bimini top
- Teak flag staff
- Teak swim platform
- Transom shower
- In deck storage boxes
- Cockpit lazarette
- Bright work was re-done in December of 2013

MECHANICAL:

- Twin CAT 3208 (435HP) diesel engines with 1900 hours
- Fresh water pump
- Bilge blower
- Bilge pumps
- Racor fuel filters
- Air Seps (New in 2012)
- Mechanical gauge package in engine compartment
- Bilge Buster air purifier
- Steering system (New in 2013)
- Zinc Saver

- Glendenning engine synchronizer
- Air conditioning system flushed and de-scaled in 2013
- Water heater (new)

ELECTRICAL:

- Onan generator with 1565 hours
- Trace inverter system
- Zantrex battery charger
- Electrical panel located in salon by helm
- Amp meter
- Volt meter
- Remote generator start/stop controls
- Battery selector/ on-off switches
- 50 amp shore power hook up on electrical cable master
- Ships batteries (5) (renewed in 2013)

EXCLUSIONS:

OWNERS PERSONAL ITEMS AND ANY OTHER NOT LISTED HEREIN AT TIME OF VIEW.
TENDER LIFT AND DINGHY ARE NOT INCLUDED WITH THE SALE OF THIS VESSEL.

Exclusions

Owner's personal belongings.

Disclaimer

The Company offers the details of this vessel or yacht in good faith but cannot guarantee or warrant the accuracy of this information nor warrant the condition of the vessel. A buyer should instruct his representatives, agents, or his surveyors, to investigate such details as the buyer desires validated. This vessel or yacht is offered subject to prior sale, price change, or withdrawal without notice.

PHOTOS

Galley



Galley



Salon Sofa



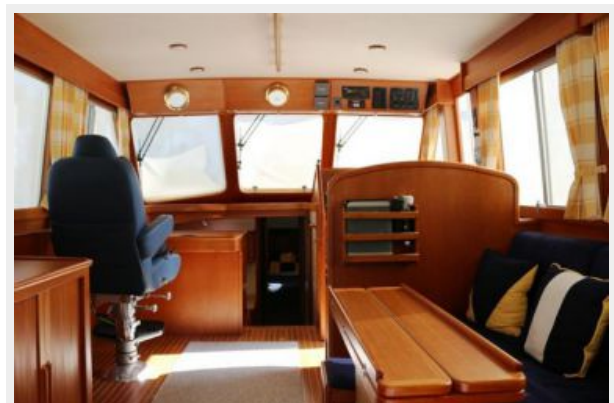
Salon



Salon Port



Salon Forward



Salon Starboard



Master Stateroom Berth



Head



Master Stateroom to Starboard



Shower



Starboard Stateroom



Starboard Stateroom



Companionway



Breaker Panel



Lower Helm Overview



Lower Helm



Lower Helm Overhead



Companion Seat



Cockpit



Cockpit Aft



Cockpit Forward



New Canvas 10/14



New Canvas 10/14



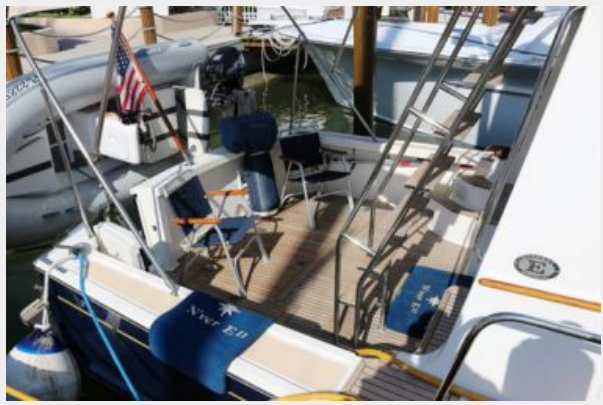
New Canvas 10/14



New Canvas 10/14



Cockpit



Generator



Engine Port



Engine Starboard



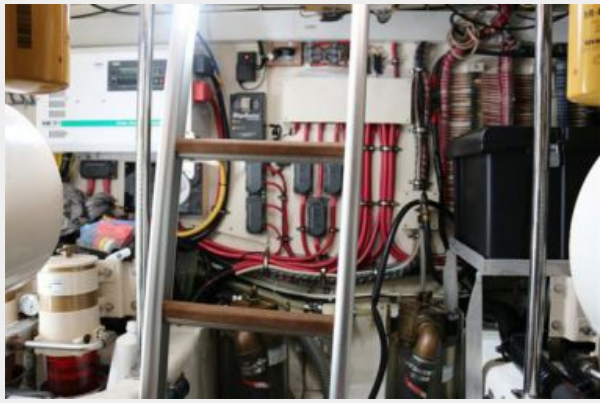
Engine Room



Engine Room



Engine Room



Engine Room



Engine Room



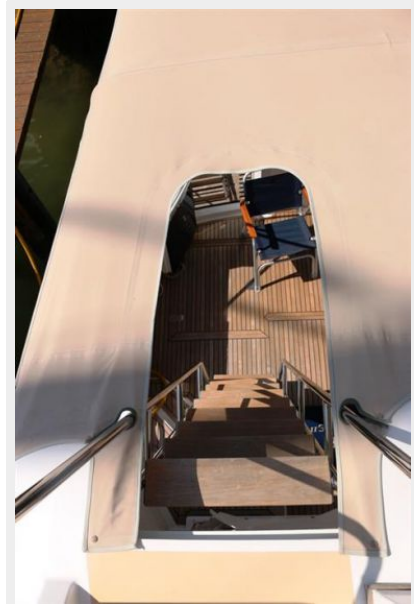
Flybridge Bench Seating



Flybridge Helm



Flybridge Ladder



Flybridge Seating



Flybridge Updated Electronics



Foredeck



Foredeck



Ground Tackle



Teak Swim Platform



Walk Around Deck



N'Ver E Nameboard



CONTACTS

Andrey Shestakov, leading yacht broker of the sales department of Shestakov Yacht Sales Inc. Shestakov Yacht Sales Inc., the official representative of the Miami/Fort Lauderdale FL headquarters.

Contact details

Email: andrey@shestakovyachtsales.com

Web: shestakovyachtsales.com/en/

Telephones

USA: +1(954)274-4435

Office hours

Monday – Saturday: **9:00 - 21:00** EDT

Sunday: **closed**

Address



Harbour Towne Marina, 850 NE 3rd St,
STE 213, Dania, FL 33004