

ZR1 — SUNSEEKER



Builder: SUNSEEKER

Year Built: 2014

Model: Motor Yacht

Price: PRICE ON APPLICATION

Location: United States

LOA: 68' 0" (20.73m)

Beam: 16' 9" (5.11m)

Min Draft: 0' 0" (0.00m)

Max Draft: 5' 2" (1.57m)

Our experienced yacht broker, Andrey Shestakov, will help you choose and buy a yacht that best suits your needs ZR1 — SUNSEEKER from our catalogue. Presently, at Shestakov Yacht Sales Inc., we have a wide variety of yachts available on our sale's list. We also work in close contact with all the big yacht manufacturers from all over the world.

If you would like to buy a yacht ZR1 — SUNSEEKER or would like help answering any questions concerning purchasing, selling or chartering a yacht, please call +1(954)274-4435

TABLE OF CONTENTS

TABLE OF CONTENTS	2
SPECIFICATIONS	3
Overview	3
Basic Information	3
Dimensions	3
Speed, Capacities and Weight	3
Accommodations	3
Hull and Deck Information	4
Engine Information	4
DETAILED INFORMATION	5
Construction	5
Deck Equipment	5
Aft Cockpit	5
Helm	6
Accommodations	6
Galley	9
Engine Room	9
Electrical Equipment	10
Exclusions	10
Disclaimer	11
PHOTOS	12
CONTACTS	22
Contact details	22
Telephones	22
Office hours	22
Address	22

SPECIFICATIONS

Overview

Delivered in January, 2014. Under warranty until January, 2015 Will be available August 21, 2014

Basic Information

Category: Motor Yacht

Sub Category: Flybridge

Model Year: 2014

Year Built: 2014

Country: United States

Fly Bridge: Yes

Dimensions

LOA: 68' 0" (20.73m)

LWL: 53' 10" (16.41m)

LOD: 0' 0" (0.00m)

Beam: 16' 9" (5.11m)

Min Draft: 0' 0" (0.00m)

Max Draft: 5' 2" (1.57m)

Clearance: 0' 0" (0.00m)

MFG Length: 71' 2" (21.69m)

Speed, Capacities and Weight

Cruise Speed Range: 300

Displacement: 82209 Pounds

Water Capacity: 211 Gallons

Fuel Capacity: 925 Gallons

Accommodations

Total Cabins: 3

Total Heads: 3

Crew Berths: 2

Crew Heads: 1

Hull and Deck Information

Hull Material: Fiberglass

Engine Information

Engines: 2

Manufacturer: MTU

Engine Type: Inboard

Fuel Type: Diesel

DETAILED INFORMATION

Construction

- Hand-laid GRP
- Gel coat including stripes
- Vinylester skin coat with powderbound mat
- Stitched multi-axial reinforced single skin bottom
- Balsa cored hull topsides
- PVC foam cored deck and superstructure
- Hull stiffened with longitudinal stringers supported by transverse bulkheads and floors

Deck Equipment

- Fittings all in stainless steel
- 8 x stainless steel deck cleats
- Pulpit and cockpit rails
- Stainless steel fendering with rubber insert
- Curved safety glass windscreen
- Stainless steel bow roller with anchor stop
- Stainless steel bow plate
- Delta anchor and 60m chain (galvanized)
- Electric winch and capstan with deck and interior helm controls
- Chain locker/fender storage
- Fender tie bar under anchor locker lid
- Fore deck coach-roof storage lockers
- Fuel fillers port and starboard
- Fresh-water filler
- IMCO navigation lights
- 2 x Pantograph windscreen wipers and washers
- Garage for tender
- Ensign staff and socket

Aft Cockpit

- Self draining
- Teak-laid Cockpit Deck
- Stern safety door
- Cockpit speakers with CD remote

- Wetbar sink with hot and cold water, cool box, ice maker, locker and griddle
- Upholstered seating around cockpit table
- Large stern sun pad
- Lockers beneath seating
- Overhead cockpit lights 24v
- Low-level courtesy lights 24v
- Engine room access hatch
- Boat hook

Helm

- Twin helm seats
- Navigation console with chart area
- Hydraulic power steering
- Leather rimmed steering wheel
- Analogue engine instrumentation
- Chart plotter with GPS
- Radar open scanner
- Autopilot
- Speed and depth instrumentation
- VHF radio with DSC
- Rudder indicator
- Water tank gauge
- Fuel tank gauge
- Trim tab controls
- Single lever electronic engine controls
- Magnetic compass
- Waterproof plug and socket 12v
- Horn
- Windscreen wipers and washers
- Glass holders
- Hand-held fire extinguisher

Accommodations

Deck saloon

- Separate dining area with table
- Stowage beneath seats
- 55" Television on fall and rise system
- Bluray/DVD/CD cinema sound system
- Airport Express

- Drinks cupboard
- Overhead halogen lighting LED 24v
- Stainless steel sliding door to cockpit
- Main control panel (AC/DC)
- Generator controls
- Air Conditioning
- 3 x Double AC sockets
- Wood flooring
- Choice of interior finishes and veneers
- Scatter cushion

Forward stateroom

- Double berth
- Storage beneath
- Drawer in base-end
- 2 x reading lights 24v
- Outboard shelving and cupboards
- Overhead bedside cupboards
- Hanging wardrobes with mirrored panel
- Overhead lights LED 24v
- 2 x opening portholes with mosquito screens
- Port-light blinds
- Deck hatch with blind and mosquito screen
- Sky-light
- 2 x Double AC sockets
- Door to shower room
- Fitted carpet
- Air Conditioning
- 32" television
- Blu-ray/DVD/CD player with speakers

Forward en suite shower room

- Washbasin
- Taps and accessories
- Hot and cold water supply
- Separate shower compartment
- Electric toilet
- Extractor fan
- Mirrored vanity unit
- Shelved cupboard
- Toothbrush and glass holder
- Soap dispenser
- Towel ring and towels

- Overhead lights
- Opening porthole with mosquito screen and blind
- Razor socket 240/110v

Starboard guest cabin

- 2 x single berths
- Under berth storage
- 2 x reading lights 24v
- Hanging wardrobe
- Overhead lighting LED 24v
- Opening porthole with mosquito screen and blinds
- Double AC socket
- Fitted carpet
- Air Conditioning
- 22" television
- Blu-ray/DVD/CD player with speakers

Starboard en suite shower room

- Washbasin
- Taps and accessories
- Hot and cold water supply
- Separate shower compartment
- Electric toilet
- Extractor fan
- Mirrored vanity unit
- Shelved cupboard
- Toothbrush and glass holder
- Soap dispenser
- Towel ring and towels
- Overhead lights LED
- Opening porthole with mosquito screen and blind
- Razor socket 240/110v

Master aft stateroom

- Double berth
- Cupboard and drawer stowage
- 2 x reading lights 24v
- Bedside drawers
- Walk-in wardrobe
- Overhead lights LED 24v
- 2 x large windows with opening portholes, mosquito screens and blinds
- Two Double AC sockets

- Door to shower room
- Fitted carpet
- Settee
- Air Conditioning
- 32" television
- Blu-ray/DVD/CD player with speakers

Aft en suite shower room

- Washbasin
- Taps and accessories
- Hot and cold water supply
- Separate shower compartment
- Electric toilet
- Extractor fan
- Mirrored vanity unit
- Shelved cupboard
- Toothbrush and glass holder
- Soap dispenser
- Towel ring and towels
- Overhead lights LED
- Opening porthole with mosquito screen and blind
- Razor socket 240/110vs

Galley

- Sink and drainer
- 3 ring ceramic touch controls and extractor fan
- Electric refrigerator
- Electric freezer
- Microwave convection oven
- Hot and cold water
- Trash bin
- Cupboard and drawer storage
- 8 place crockery set
- 8 place cutlery set
- 2 x Double AC sockets
- Hand-held fire extinguisher
- First aid kit
- Wood flooring

Engine Room

- Soundproofing throughout
- Fuel filters/water separators to engines
- Fuel filters/water separators to generators
- Automatic bilge and flood pumps with high level alarms
- Generator exhaust silencers and water separators
- Engine exhaust dry risers and water injection
- Strainers to all raw water inlets
- Power steering - hydraulic control steering
- Garage door and trim tabs hydraulic control unit
- Lifting platform hydraulic control unit
- Air intakes fitted with emergency shut down flaps (automatically operated)
- Air extraction fans (AC) fitted with butterfly shutdown dampers
- Exhaust gas temperature sensor
- Fluorescent lights (AC)
- Engine room fire extinguishing system (FM200)
- 1 x AC 220V Socket
- 1 x 24v Socket
- Portable CO2 fire extinguisher
- Inspection Lamp

Electrical Equipment

- 19kw 50hz generator with underwater silent exhaust and sound shield
- AC dockside connection
- Galvanic isolator
- 24v and 12v DC electrical system with full circuit breaker protection
- 8 x engine batteries 24v circuit
- 4 x domestic batteries 24v circuit
- 2 x generator batteries 12v circuit
- Alternator split charging system
- Remote battery switches controlled from locker in cockpit
- Battery charger for 24v circuits
- Battery charger for 12v circuits
- Water heater
- AC electrical sockets throughout
- 24v hand light and cable

Exclusions

Owner's personal belongings.

Disclaimer

The Company offers the details of this vessel or yacht in good faith but cannot guarantee or warrant the accuracy of this information nor warrant the condition of the vessel. A buyer should instruct his representatives, agents, or his surveyors, to investigate such details as the buyer desires validated. This vessel or yacht is offered subject to prior sale, price change, or withdrawal without notice.

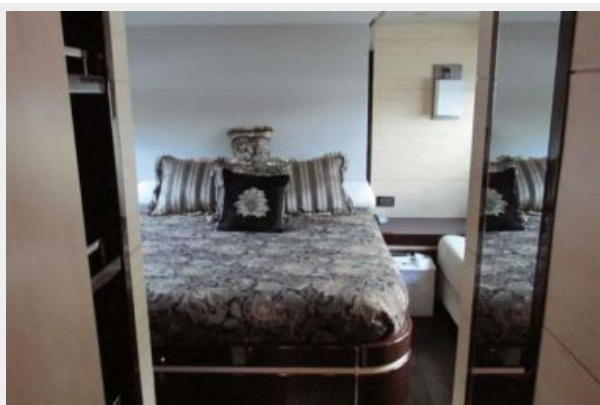
PHOTOS

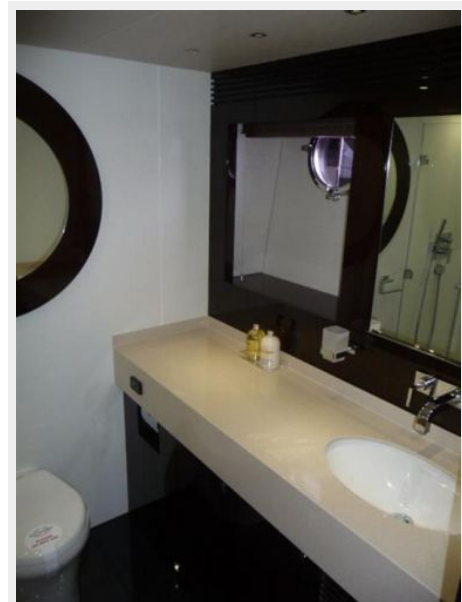
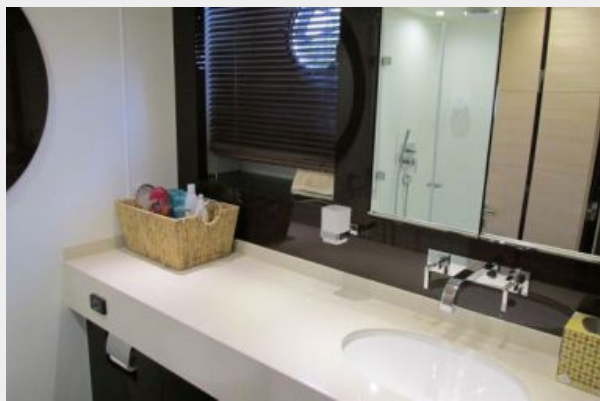








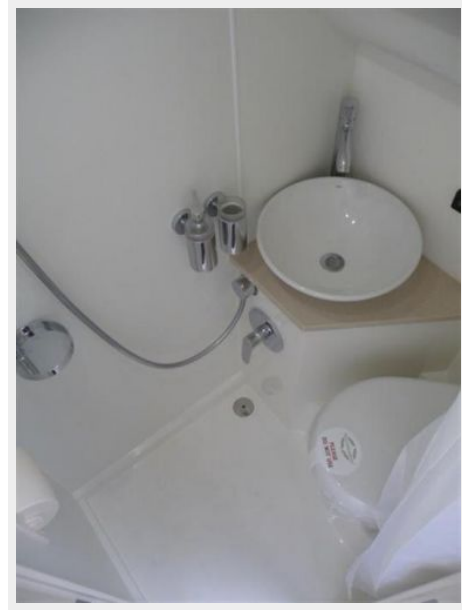












CONTACTS

Andrey Shestakov, leading yacht broker of the sales department of Shestakov Yacht Sales Inc. Shestakov Yacht Sales Inc., the official representative of the Miami/Fort Lauderdale FL headquarters.

Contact details

Email: andrey@shestakovyachtsales.com

Web: shestakovyachtsales.com/en/

Telephones

USA: +1(954)274-4435

Office hours

Monday – Saturday: **9:00 - 21:00** EDT

Sunday: **closed**

Address



Harbour Towne Marina, 850 NE 3rd St,
STE 213, Dania, FL 33004