

SWISS BLISS — CARVER



Builder: CARVER

Year Built: 2002

Model: Motor Yacht

Price: PRICE ON APPLICATION

Location: United States

LOA: 56' 0" (17.07m)

Beam: 15' 4" (4.67m)

Max Draft: 4' 6" (1.37m)

Cruise Speed: 22 Kts. (25 MPH)

Our experienced yacht broker, Andrey Shestakov, will help you choose and buy a yacht that best suits your needs **Swiss Bliss — CARVER** from our catalogue. Presently, at Shestakov Yacht Sales Inc., we have a wide variety of yachts available on our sale's list. We also work in close contact with all the big yacht manufacturers from all over the world.

If you would like to buy a yacht **Swiss Bliss — CARVER** or would like help answering any questions concerning purchasing, selling or chartering a yacht, please call **+1(954)274-4435**

TABLE OF CONTENTS

| | |
|----------------------------------|----|
| TABLE OF CONTENTS | 2 |
| SPECIFICATIONS | 4 |
| Basic Information | 4 |
| Dimensions | 4 |
| Speed, Capacities and Weight | 4 |
| Accommodations | 4 |
| Hull and Deck Information | 4 |
| Engine Information | 5 |
| DETAILED INFORMATION | 6 |
| Vessel Walkthrough | 6 |
| Master Stateroom | 6 |
| Master Head | 6 |
| VIP Stateroom | 7 |
| Guest Stateroom | 7 |
| Aft Deck | 7 |
| Galley | 7 |
| Electronics, Navigational , Helm | 8 |
| Deck Equipment | 8 |
| Cockpit | 8 |
| Mechanical/Electrical Equipment | 9 |
| Exclusion | 9 |
| Notice | 9 |
| Exclusions | 9 |
| Disclaimer | 9 |
| PHOTOS | 10 |
| CONTACTS | 16 |
| Contact details | 16 |
| Telephones | 16 |

| | |
|--------------|----|
| Office hours | 16 |
| Address | 16 |

SPECIFICATIONS

Basic Information

Category: Motor Yacht

Sub Category: Cockpit

Model Year: 2002

Year Built: 2002

Country: United States

Vessel Top: Bimini Top

Fly Bridge: Yes

Cockpit: Yes

Dimensions

LOA: 56' 0" (17.07m)

Beam: 15' 4" (4.67m)

Max Draft: 4' 6" (1.37m)

Speed, Capacities and Weight

Cruise Speed: 22 Kts. (25 MPH)

Displacement: 54167 Pounds

Water Capacity: 158 Gallons

Holding Tank: 95 Gallons

Fuel Capacity: 646 Gallons

Accommodations

Total Cabins: 3

Total Heads: 3

Hull and Deck Information

Hull Material: Fiberglass

Engine Information

Engines: 2

Manufacturer: Volvo

Model: D12-EDC

Engine Type: Inboard

Fuel Type: Diesel

DETAILED INFORMATION

Vessel Walkthrough

Original owner vessel

From Powerboat Guide

The Carver 564 is a cockpit version of the company's 506 Motor Yacht. The 564 carries some additional fuel; other than that—and the cockpit—the two boats are the same. On the inside she's an impressive display of interior volume unmatched in a yacht this size. The salon—easily the most impressive aspect of the boat—is immense with a panoramic view and about 7 feet of headroom. The full-width salon of the 564 is made possible by raising the side decks to eye level, which is why the boat seems to have so much freeboard. The three-stateroom, mid-galley floor-plan features a dedicated dining area across from the galley, three heads, and seating in the salon for a small crowd. Note that the master stateroom has direct cockpit access. Hi-Gloss Cherry woodwork and cabinetry are found throughout the interior, and Corian counters are used in the galley. Topside, wing doors and an aft-deck.

The optional Twin 675hp Volvo diesels will cruise at 22 knots (mid 20s top)

Master Stateroom

A private, relaxing suite with great access and a terrific water view. Master Stateroom is truly "Full Beam"

- **Easy access to and from aft lower cockpit through sliding glass door with screen for great mild weather ventilation**
- **Queen-size walk around berth**
- **Flat screen TV and DVD**
- **Multiple cedar lined full length closets, and drawer spaces**

Master Head

The Master head is split by a nicely finished sink/vanity along the starboard side across from the foot of the master bed, with the head privately enclosed to the left and a large owner's tub shower to the right.

- **VacuFlush System**
- **Waste tank monitor**

VIP Stateroom

- Forward Pedestal style walk around berth
- Flat screen TV & DVD Player
- Private Ensuite access to forward head
- Storage in two cedar lined hanging lockers, drawers under berth

Guest Stateroom

- Port side twin single berth
- Separate stacked washing machine & dryer with storage
- The third head

Aft Deck

Plenty of space to entertain the dock crowd, or just hang out with the family privately.

- Central air conditioning & heat for Aft Deck
- Flat screen TV
- Three solid plexiglass doors, one port, one starboard, and one aft to lower cockpit
- Loose fit patio furniture with cushions - one sofa & two chairs
- Three sided hard enclosure with port & starboard opening vent windows
- Hardtop
- Storage

Galley

- Fully equipped galley
- Cherry Woodwork & cabinetry
- Full size refrigerator
- Three burner electric stove and oven
- Corian counter tops
- Mid galley floor plan
- Double sinks
- Microwave Oven
- Trash Compactor
- Cherry wood floor

Electronics, Navigational , Helm

- Three sided enclosure with openings
- Helm bench seat
- AM/FM Stereo, CD Changer and speakers
- Abundant storage
- Wet bar with storage, refrigerator and icemaker
- L-Shaped seating aft & to port
- Dual Volvo Penta Digital EVC Display
- Bowthruster Control
- Remote control spotlight
- Digital Depth Sounder
- Furuno 1650 Color Chartplotter
- Furuno 1932 MK II Radar
- VHF Radio
- Robertson AP 20 Autopilot

Deck Equipment

- Bimini top and vinyl windows all new in 2013
- Very wide bow with access through port & starboard aft deck Plexiglass wing doors.
- All chain Maxwell VWC 3500 windlass w/helm & foredeck controls
- Freshwater wash down on the bow
- Glendinning cablemaster - 50Amp cord
- Additional Forward 50Amp shore power input
- Swim platform & ladder
- Remote Spotlight

Cockpit

- Private access to Master Stateroom
- Port & Starboard molded in boarding steps
- Hatch access to lazarette
- Walk through transom access to swim platform
- Hot/Cold transom shower
- Swim Ladder
- Shore water connection

Mechanical/Electrical Equipment

- 23 Kw Kohler FWC Generator upgrade over standard 15.5 KW
- Bowthruster
- Glendinning Cablemaster aft shore power
- Oil Change system

Exclusion

Owner's personal items are not included in the sale

Notice

The vessel was placed in service Spring of 2003

The purchase of the vessel would have to close after Sept 30, 2014

Exclusions

Owner's personal belongings.

Disclaimer

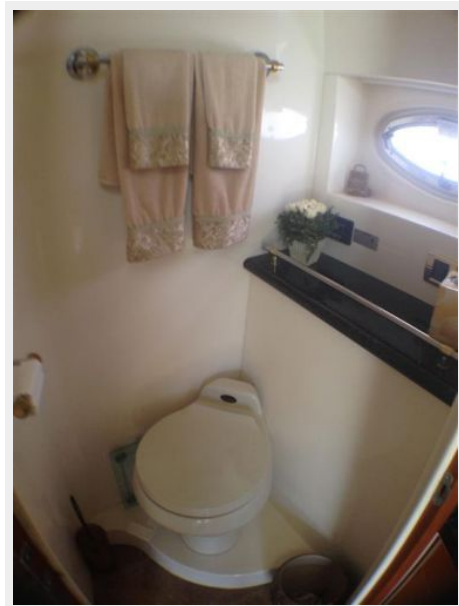
The Company offers the details of this vessel or yacht in good faith but cannot guarantee or warrant the accuracy of this information nor warrant the condition of the vessel. A buyer should instruct his representatives, agents, or his surveyors, to investigate such details as the buyer desires validated. This vessel or yacht is offered subject to prior sale, price change, or withdrawal without notice.

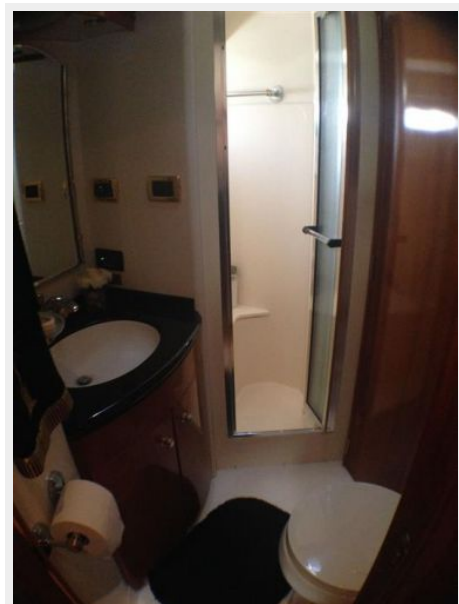
PHOTOS













CONTACTS

Andrey Shestakov, leading yacht broker of the sales department of Shestakov Yacht Sales Inc. Shestakov Yacht Sales Inc., the official representative of the Miami/Fort Lauderdale FL headquarters.

Contact details

Email: andrey@shestakovyachtsales.com

Web: shestakovyachtsales.com/en/

Telephones

USA: +1(954)274-4435

Office hours

Monday – Saturday: **9:00 - 21:00** EDT

Sunday: **closed**

Address



Harbour Towne Marina, 850 NE 3rd St,
STE 213, Dania, FL 33004