

RIVA SUPERAMERICA — RIVA



Builder: [RIVA](#)

Year Built: 1986

Model: Motor Yacht

Price: PRICE ON APPLICATION

Location: United States

LOA: 50' 0" (15.24m)

Beam: 13' 9" (4.19m)

Min Draft: 4' 3" (1.30m)

Cruise Speed: 23 Kts. (26 MPH)

Max Speed: 27 Kts. (31 MPH)

Our experienced yacht broker, Andrey Shestakov, will help you choose and buy a yacht that best suits your needs **Riva Superamerica — RIVA** from our catalogue. Presently, at Shestakov Yacht Sales Inc., we have a wide variety of yachts available on our sale's list. We also work in close contact with all the big yacht manufacturers from all over the world.

If you would like to buy a yacht **Riva Superamerica — RIVA** or would like help answering any questions concerning purchasing, selling or chartering a yacht, please call **+1(954)274-4435**

TABLE OF CONTENTS

TABLE OF CONTENTS	2
SPECIFICATIONS	4
Basic Information	4
Dimensions	4
Speed, Capacities and Weight	4
Accommodations	4
Hull and Deck Information	4
Engine Information	5
DETAILED INFORMATION	6
Accommodations	6
Lower Helm	7
Flybridge & Upper Helm	8
Hull & Deck	8
Electrical & Mechanical	9
Notes	10
Exclusions	10
Disclaimer	10
PHOTOS	11
Aft Flybridge	11
Upper Helm	11
Forward Flybridge	11
Forward Flybridge	11
SS Davits	11
Aft Cockpit	11
Boarding Step	12
Windlass & Anchor	12
Foredeck	12
Flybridge	12

Forward Cockpit	12
Transom & Platform	12
Aft Salon	13
Buffet and Storage	13
Captain's Table	13
Companionway	13
Guest Stateroom	13
Galley	13
Guest/Day Head	14
Lower Controls	14
Master Stateroom	14
Lower Helm	14
Master Head	15
Master Hanging Lockers	15
Port Salon	15
Forward Salon	15
Starboard Salon	15
Forward View	15
CONTACTS	16
Contact details	16
Telephones	16
Office hours	16
Address	16

SPECIFICATIONS

Basic Information

Category: Motor Yacht

Sub Category: Flybridge

Model Year: 1986

Year Built: 1986

Country: United States

Dimensions

LOA: 50' 0" (15.24m)

Beam: 13' 9" (4.19m)

Min Draft: 4' 3" (1.30m)

Speed, Capacities and Weight

Cruise Speed: 23 Kts. (26 MPH)

Max Speed: 27 Kts. (31 MPH)

Displacement: 41880 Pounds

Water Capacity: 100 Gallons

Holding Tank: 35 Gallons

Fuel Capacity: 525 Gallons

Accommodations

Total Cabins: 2

Total Berths: 3

Total Heads: 1

Hull and Deck Information

Hull Material: Fiberglass

Engine Information

Engines: 2

Manufacturer: Cummins

Model: VT903-M

Engine Type: Inboard

Fuel Type: Diesel

DETAILED INFORMATION

Accommodations

Master forward with centerline queen

Master- 3 storage drawers under berth

Master- 2 hanging lockers

Master- new blue carpeting

Master- cabin, sconse, and reading lights

Master- ensuite head with shower, electric head, sink/vanity

Master- teak grate head flooring

Master- Pioneer stereo system

Guest stateroom to port with over/under twin berths

Guest- double storage cabinet

Guest- hanging locker

Guest- new blue carpeting

Guest- ensuite head with shower, electric head, sink/vanity

Guest- teak grate head flooring

Guest- cabin and reading lights

Guest- stereo system

Salon- locking sliding SS door

Salon- cream leather sofa

Salon- 2 cream leather small bench chairs

Salon- 2 blue leather small bench chair

Salon- new blue carpeting

Salon- adjustable teak coffee/dining teak table

Salon- 2 refrigerators/freezers

Salon- buffet/storage cabinetry with Riva/Rosenberg china

Salon- TV connections

Salon- Sony speakers

Salon- Clarion M475 stereo system with CD

Salon- electrical panel

Galley- 'U' shape down and open

Galley- stovetop with 3 electric sealed burners

Galley- storage cabinetry and drawers

Galley- SS countertop

Galley- SS sink with Ideal Standard faucet

Galley- under counter refrigerator

Lower Helm

Captain's teak table

Chart/storage box

Flip up helm seat

Riva teak 6 pointed wheel

Riva gauges

Trim tab control

Controls

Radio telephone VHF D72A

Overhead electronics panel

Neco autopilot 8401

Texas Instruments TI9900II

VDO speed

VDO depth

Ritchie compass

Windshield wipers

Forward window covering

Flybridge & Upper Helm

White bimini top

3 sided eisenglass

Rear raked arch

Plexi windshield with teak rail

3 forward facing seats

2 rear facing seats

Under seat storage

Refrigerator/freezer

SS railing

F/G flooring

Riva wheel

Riva gauges

Ritchie compass

Trim tab controls

Controls

Standard Horizon Quest-X GX1500S

Dual trumpet horns (2)

Electronics mast/nav lights

Forward spreader lights (2)

Hull & Deck

Foredeck- windlass

Foredeck- SS anchor with chain & rode

Foredeck- SS railing

Foredeck- crew/storage room access

Foredeck- SS fender racks (2)

Foredeck- sunpad area with cushions

Cockpit- teak sole

Cockpit- teak boarding step

Cockpit- under gunnel storage

Cockpit- washdown

Cockpit- shorepower connection

Cockpit- TV/phone connection

Cockpit- teak transom bench seat with storage

Cockpit- teak steps ladder to flybridge

Cockpit- multi-purpose rod holders (2)

Cockpit- cover

Cockpit- engine room access

Cockpit- Clarion stereo speakers

Transom- SS davits (2)

Transom- folding swim ladder with teak steps

Transom- integrated swim platform with teak inlays

Electrical & Mechanical

Cummins VT903-M 425hp each (1639/1414 hrs)

Onan 12kw generator (1918 hrs)

Superior Watchman Halon 1301 fire system

Fire extinguishers

Shorepower system

Sentry battery charger

Air conditioning systems

Trim tabs

Notes

Excludes owner personal items

Exclusions

Owner's personal belongings.

Disclaimer

The Company offers the details of this vessel or yacht in good faith but cannot guarantee or warrant the accuracy of this information nor warrant the condition of the vessel. A buyer should instruct his representatives, agents, or his surveyors, to investigate such details as the buyer desires validated. This vessel or yacht is offered subject to prior sale, price change, or withdrawal without notice.

PHOTOS

Aft Flybridge



Upper Helm



Forward Flybridge



Forward Flybridge



SS Davits



Aft Cockpit



Boarding Step



Windlass & Anchor



Foredeck



Flybridge



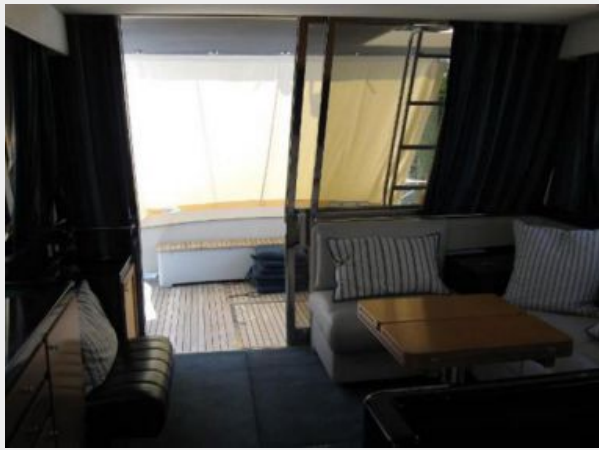
Forward Cockpit



Transom & Platform



Aft Salon



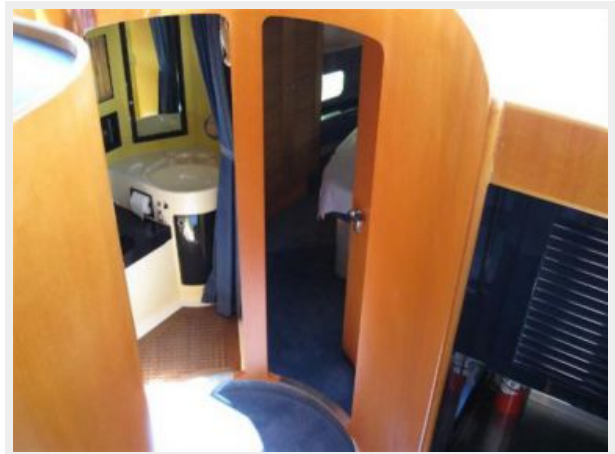
Buffet and Storage



Captain's Table



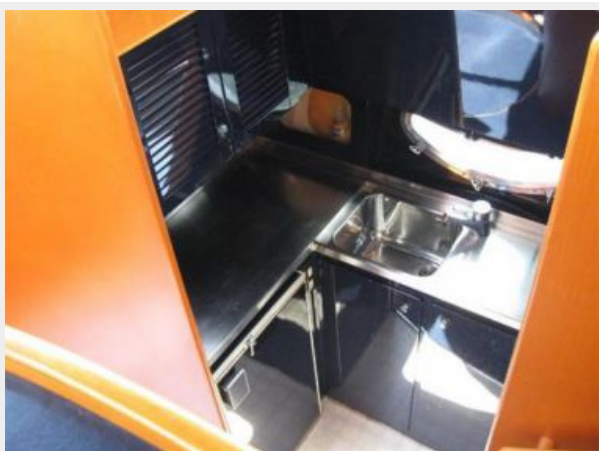
Companionway



Guest Stateroom



Galley



Guest/Day Head



Lower Controls



Master Stateroom



Lower Helm



Master Hanging Lockers



Master Head



Port Salon



Forward Salon



Starboard Salon



Forward View



CONTACTS

Andrey Shestakov, leading yacht broker of the sales department of Shestakov Yacht Sales Inc. Shestakov Yacht Sales Inc., the official representative of the Miami/Fort Lauderdale FL headquarters.

Contact details

Email: andrey@shestakovyachtsales.com

Web: shestakovyachtsales.com/en/

Telephones

USA: +1(954)274-4435

Office hours

Monday – Saturday: **9:00 - 21:00** EDT

Sunday: **closed**

Address



Harbour Towne Marina, 850 NE 3rd St,
STE 213, Dania, FL 33004