

## ANNA — NORTHSHORE



**Builder:** NORTHSHORE

**Year Built:** 2013

**Model:** Cruising Sailboat

**Price:** PRICE ON APPLICATION

**Location:** Grenada

**LOA:** 47' 1" (14.35m)

**Beam:** 14' 8" (4.47m)

**Min Draft:** 3' 3" (0.99m)

**Max Draft:** 10' 3" (3.12m)

Our experienced yacht broker, Andrey Shestakov, will help you choose and buy a yacht that best suits your needs **ANNA — NORTHSHORE** from our catalogue. Presently, at Shestakov Yacht Sales Inc., we have a wide variety of yachts available on our sale's list. We also work in close contact with all the big yacht manufacturers from all over the world.

If you would like to buy a yacht **ANNA — NORTHSHORE** or would like help answering any questions concerning purchasing, selling or chartering a yacht, please call **+1(954)274-4435**

---

# TABLE OF CONTENTS

---

TABLE OF CONTENTS	2
SPECIFICATIONS	4
Overview	4
Basic Information	4
Dimensions	4
Speed, Capacities and Weight	4
Accommodations	4
Hull and Deck Information	5
Engine Information	5
DETAILED INFORMATION	6
Broker's Comments	6
Manufacturer Provided Description	6
Construction	6
Machinery	8
Electrical Systems	9
Plumbing Systems	10
Tankage	11
Navigation Equipment	11
Domestic Equipment	12
Accommodation	13
Deck Equipment	14
Exclusions	18
Disclaimer	18
PHOTOS	19
CONTACTS	22
Contact details	22
Telephones	22
Office hours	22

---

Address

22

---

# SPECIFICATIONS

---

## Overview

---

Superb Stephen Jones design with variable draft and superb easy, fast sailing rig. This Southerly 47 has a fab teak interior and is fully kitted for blue water - she gleams.

## Basic Information

---

**Category:** Cruising Sailboat

**Model Year:** 2013

**Year Built:** 2013

**Country:** Grenada

## Dimensions

---

**LOA:** 47' 1" (14.35m)

**LWL:** 42' 10" (13.06m)

**Beam:** 14' 8" (4.47m)

**Min Draft:** 3' 3" (0.99m)

**Max Draft:** 10' 3" (3.12m)

## Speed, Capacities and Weight

---

**Displacement:** 38042.96793072 Pounds

**Water Capacity:** 128.915961376 Gallons

**Fuel Capacity:** 227.980480876 Gallons

## Accommodations

---

**Total Cabins:** 3

**Total Berths:** 7

**Total Heads:** 2

---

## Hull and Deck Information

---

**Hull Material:** GRP

**Deck Material:** GRP

**Hull Designer:** Stephen Jones

---

## Engine Information

---

**Engines:** 1

**Manufacturer:** Yanmar

**Model:** 4JH5-TE

**Fuel Type:** Diesel

---

# DETAILED INFORMATION

---

## Broker's Comments

---

ANNA is an exceptionally well specified example of her class and one which has everything that a yachtsman needs for blue water cruising. She has been meticulously maintained in this ownership. The drop keel arrangement provides incredible versatility, but the real news about the Southerly 47 is her sparkling sailing which is accomplished with a small crew because of her clever deck layout and sail handling arrangement. ANNA also offers a substantial saving on new build cost.

## Manufacturer Provided Description

---

Nominated for European Yacht of the Year 2013, the Southerly 47 keeps the luxurious qualities and interior styling of the Southerly marque. This blue water cruiser is designed to a high specification, with easy handling, and can be sailed by just two people.

The tall fractional rig with self tacking jib and large mainsail provides powerful sailing performance. An asymmetric gennaker can be flown from an optional bowsprit, for light wind conditions. The double headsail rig (self tacking jib and overlapping genoa) offers optimum sailing performance. As with all Southerly's, the semi balanced twin rudders give instantly responsive steering and precise directional stability.

The mainsheet track is set across the coachroof with lines led aft to both helm positions, for easy handling, whilst keeping the cockpit free and uncluttered. The cockpit is secure and enclosed, with deep comfortable seating. A central table offers dinette facilities for guests whilst providing a foot brace, when the yacht is heeled. Teak double seats to the pushpit provide further areas for socialising. The fold down transom door gives access to a large stowage area, ideal for a dinghy.

The interior space has been designed for maximum comfort and practicality with contemporary styling to create a luxurious feel throughout the yacht, and features a large raised saloon to port offering panoramic views with further seating opposite, at a lower level. The large open galley is well planned and positioned close to the companionway. Ample work surfaces, stainless steel appliances and plenty of stowage space is provided to enjoy living onboard.

## Construction

---

*RCD Status: The yacht conforms with the essential safety requirements of Directive 94/25EC (Recreational Craft Directive) and is categorised A – “Ocean” (or Cat B – whichever is appropriate)*

*Hull, Deck & Superstructure Construction:*

- Heavy duty GRP moulding, hand laid up to Northshore’s Nordseal laminating system, incorporating multi-axial and unidirectional reinforcements.
- The keel box is an integral part of the hull lay-up and sandwich construction stiffening runs the entire length of the hull topsides.
- All main bulkheads are bonded into the hull at main lay-up stage along with a stiffening grillage of traverse frames and longitudinal stringers.
- The engine bearers are also an integral part of the hull structure.
- Kevlar reinforcement to bow section, from mast bulkhead, for additional strengthening of hull.
- Silver grey hull with gun metal grey boot top and gun metal grey and red twin style stripes.
- Northshore’s patented Nordseal anti-osmosis system.
- Copper coating applied to below the waterline.
- Deck in hand laid up GRP sandwich construction.
- Heavily stressed areas are additionally reinforced with uni-directional glass reinforcement.
- The deck is bonded to the hull through the entire length and to all main bulkheads, resulting in a strong and integrated unit.
- Ivory white deck.
- Teak laid ring deck.
- Moulded non-slip finish to coachroof.
- Access to chain locker from sail locker.
- Access to sail locker at bow with watertight flush hatch.

*Keel & Rudder:*

- The fixed ballast is an iron casting which acts as a grounding plate and as transverse stiffening for the keel unit.
- It is fitted into a recess in the hull in the area of the keel box with stainless steel bolts.
- The aerofoil Variable Draft is cast iron and incorporates a stainless steel pivot at the leading edge.
- The Variable Draft is raised and lowered by a hydraulic ram powered by an electrically driven pump with a hand operated back---up.
- All hydraulics are easily accessible for maintenance.
- Keel control and gauge showing keel position fitted at wheel pedestal.
- Removable stainless steel pin, positioned to enable the keel to be locked in the 'up' position.
- Semi balanced twin rudders.

## Machinery

---

### *Engine & Gearboxes:*

- 1 x Yanmar 4JH5-TE 75hp 4-cylinder, fresh water cooled, diesel engine.
- Reduction/reverse gear.
- Bronze water strainer with viewing port and removable filter.
- Basket style sea water strainer with glass inspection removable cover fitted for both main engine and generator raw water inlet.
- 12v electric ventilator.
- Sound deadening to engine box.
- Racor single fuel filter system.
- Additional sound proofing and insulation where possible between engineering space and aft cabin to reduce sound of heater units and autopilot motor.

### *Propulsion & Steering:*

- GRP stern tube with water lubricated stern gland.



- Stainless steel propeller shaft.
- Ambassador AM10 rope cutter on prop shaft.
- 3-bladed Max Prop feathering propeller.
- Substantial skeg fitted on centerline to protect propeller and rudders when yacht is dried out.
- Bow thruster – 97kg with control at steering pedestal.
- Spare standard 3-bladed fixed propeller.
- Twin stainless steel cockpit wheels – Lewmar steering system.
- Single lever engine control.
- Emergency steering system.
- Twin compass guards and 6” main steering compasses.
- Wheel rims covered with hide.

---

## Electrical Systems

---

### *Voltage Systems*

- 12v system.
- Circuit breakers on main panel.
- 240v ring main: includes 3 x double outlet sockets (galley, saloon, aft cabin), earth leak circuit breaker and connection cable (with plug for shore connection 32A) and 1kW immersion heater fitted in calorifier.
- 12v 12 amp socket (suitable for high load applications such as dinghy inflator) fitted in cockpit.

### *Battery Banks:*

- 3 x AGM Slimline 185 Ah each.
- 1 x AGM 115 Ah engine start battery (555 Ah service, 115 Ah engine).
- 1 x AGM 84 Ah instrument battery.

- Isolating switches.
- Mastervolt Masterview easy battery monitor.

#### *Battery Chargers:*

- Mastervolt Mass Combi 12/2500w – 100A inverter/charger.

#### *Alternators:*

- 80amp alternator.

#### *Generator:*

- Panda 4.5kW generator.
- Basket style sea water strainer with glass inspection removable cover fitted for both main engine and generator raw water inlet.
- 2 x Watt & Sea hydro generators (500W at 8 knots).

#### *Other Electrical:*

- Photovoltaic solar panels fitted on coachroof, 9 x 72 watt cells with MPPT regulator.

---

## **Plumbing Systems**

---

#### *Fresh Water & Water Heating System:*

- Pressurised hot and cold water system.
- Mixer tap in galley sink.
- Mixer tap in heads compartments.
- Electric pressure pump.
- Hot water provided by engine calorifier unit.
- Electric sump pumps to shower trays.

### *Watermaker:*

- Dessalator D60 Freedom 12v DC watermaker – 60 litres per hour, complete with auto and manual water rinsing. Flow meter, easy to operate control panel, engineered for long life.

### *Bilge Pumps:*

- Cockpit mounted manual bilge pump and second manual bilge pump below decks.
- 3 x Electric bilge pumps.

---

## **Tankage**

---

- Fuel and water deck fillers.

### *Fuel:*

- Total capacity of 863 litres in non-metallic fuel tanks, with sediment trap and line filter.
- Additional diesel fuel tank below forward cabin bunk, including manual and electric transfer pumps – capacity 203 litres.

### *Fresh water:*

- Total capacity of 488 litres in non-metallic water tanks.

### *Grey/Blackwater holding tanks:*

- Aft heads compartment holding tank – 1 x tank fitted outboard of aft cabin hanging locker. WC pumps direct to tank or sea.
- Holding tank is gravity drained for empty at sea – c/w level indicator and deck suction outlet.

---

## **Navigation Equipment**

---

- Raymarine 18” scanner complete with scanstrut mast bracket including cable.

- Raymarine autopilot with Mamba drive, ST6002 + display in cockpit, SPX10 Smart Pilot with Rate Gyro. Includes rudder reference unit.
- Raymarine AIS650 transceiver Class B for collision avoidance information, including cables (chartplotter/radar required).
- Raymarine e7 Hybrid Touch display, complete with Navionics Card and built in antenna. Location Port Helm.
- Raymarine e125 Hybrid Touch display, complete with Navionics Card and built in antenna. Location Chart Table.
- Icom 423 VHF/DSC receiver, fitted at Chart Table, includes dedicated GPS antenna. Dedicated GPS antenna for DSC function included.
- Raystar 130 Satellite GPS antenna, mounted to coachroof for use with Raymarine NG system only.
- Raymarine ST60 + speed, depth and wind indicators mounted in instrument panel above companionway.
- Twin binnacle compasses – Plastimo Olympic 135 binnacle.

## Domestic Equipment

---

### *General:*

- Eumenia Single Nova 110HK washing machine, located beneath chart table seat.

### *Galley:*

- 130 litre front loading stainless steel refrigerator – keel cooled.
- Top loading freezer (51 litres) – keel cooled.

### *Heads/Showers:*

- Tecma easyfit quiet running electric salt WC – 1 x heads compartment only.
- Deck shower with hot and cold water, fitted in stern bathing platform.

### *Heating & Ventilation:*

- Hot air heating system with 4 x outlets (aft cabin, forward cabin, saloon, mid cabin).
- Webasto Evo 5500.
- Secondary hot air heating system – Webasto Evo 3900.
- Additional hot air heating outlet in wet locker.

#### *Entertainment:*

- Waterproof cockpit speakers for radio/CD/MP3 stereo system.
- Bose sound system & Fusion 700 media radio/VHF/DVD.
- Glomex TV antenna at main mast head – 1 x outlet.
- Inmarsat sat/telephone/fax/internet on extra pole.
- 22" HD TV flush fitted in cabinet located within forward bulkhead, port saloon – c/w bracket and connection to antenna. Remote mounted DVD/blu-ray player located in saloon side locker.

#### *Lighting:*

- Cabin lighting throughout – LED interior lights.
- Reading lights over bunks.
- Chart light over navigation table.
- Full navigation light system (Lopo Lights) incorporating bow lights, stern light, masthead tri-colour light with all round white anchor light, deck flood light and steaming light.
- Low level cockpit lighting (6 x LED lights).

## **Accommodation**

---

#### *Summary of Accommodation:*

- The layout is in accordance with the general arrangement drawing. There are a total of 7 berths (5 berths in cabins, and 2 x in saloon).
- Teak interior joinery.
- Saloon seating upholstery – Andrew Muirhead leather with contrasting double stitching.

- Saloon seating conversion to double berth, in lieu of standard, and two infill cushions.
- Strong box.
- White Concertina blinds fitted in raised coachroof area.
- 1 x Roller shade/screen – to forecabin.
- 3 x Roller shade/screens – to saloon/chart table.
- Up and over style corian stove top cover fitted in galley.
- Midship cabin, complete with top bunk hinged upwards to provide access to work bench, storage lockers, and drawers beneath, c/w 6” bench vice and tapped base plate for quick removal and top access bin.

#### *Windows, Hatches & Ventilation:*

- Thirteen opening deck hatches, one size 60, two size 10s over forecabin, one side 10 to midships cabin, one size 10 to forward heads, two size 44s and four size 10s over saloon, one size 10 over galley, one size 10 over aft heads.
- Glazed opening ports in aft cabin.
- Glazed opening port in aft heads compartment.
- Perspex main companionway hatch.
- Pilothouse windows and hull ports are tinted toughened glass, bonded in recesses in GRP mouldings.
- Deckhead recessed handrail in main saloon.
- Shower tray floor matching corian in heads.
- Teak grating to both heads compartment floors.

## **Deck Equipment**

---

#### *Rig:*

- Selden, twin spreader mast, single line reefing rig.
- Double headsail rig with extra furling forestay system forward of standard forestay with lightweight Dacron genoa for use in light airs.

- Double headsail rig (furling self tacking jib and furling overlapping genoa).
- Internal halyards.
- 1 x 19 stainless steel wire standing rigging with swage toggle – fork chrome bronze rigging screws.
- Backstay with hydraulic integral adjusters.
- Self tacking foresail.
- Furlex headsail reefing system.
- Single line reefing led aft to cockpit for mainsail.
- Solid kicker.
- Gas strut.
- Main halyard.
- Topping lift.
- Kicker, jib sheet, main halyard, topping lift, outhaul and 2 x reefs lead aft.
- Jib halyard at mast.
- Burgee and signal halyards.
- Spinnaker masthead halyard.
- Mainsheet led aft port and starboard.
- Spinnaker sheet and guy blocks only including padeye deck fittings and reinforcement on bulwark.
- Self tacking foresail track with sheet led to winches each side of helm.
- Turning blocks to take reefing lines.
- Mainsheet track with control lines.
- Rope clutches to port and starboard, for running rigging.
- Walder break (gybe preventer).

#### *Winches:*

- Lewmar winch on mast.
- 2 x Coachroof halyard winches.
- 2 x Lewmar electric winches at helm for mainsheet and jib.
- 2 x Winch handle pockets.
- Lewmar 46AEST powered halyard winch.
- Lewmar 48AEST powered mainsheet winch.
- 2 x Lewmar winches at companionway.

### *Sails:*

- North Spectra Dyneema SRP75 fully battened mainsail.
- North Spectra Dyneema SRP75 self tacking jib.
- North Dacron overlapping genoa.
- Parasailor 168 m2 with special bowsprit.
- Extra stormsail.

### *General:*

- Self draining cockpit.
- Teak cockpit table with folding leaves, stowage and handrail.
- Good access aft for boarding through transom.
- Telescopic stern boarding ladder.
- Large cockpit locker to port and starboard.
- Gas bottle storage in cockpit locker to starboard.
- Perspex main hatch with washboard.
- Instrument panel above hatchway.
- Hydraulic retracting bathing platform with access to stern stowage.
- Stainless steel pulpit incorporating navigation light bracket.



- Stainless steel stanchions and guard wires with gates port and starboard.
- Stainless steel pushpit incorporating stern gate, navigation light bracket and ensign socket; double teak seats to port and starboard pushpit.
- Foredeck sail locker.
- Stainless steel grab handles on either side of coachroof.

#### *Anchoring & Mooring Equipment:*

- Stainless steel stemhead fitting with twin bow roller.
- Heavy duty electric anchor windlass.
- Anchor chain stopper.
- Fortress kedge anchor and anchor warp, 50m length.
- Kedge warp rollers on aft deck bulwark capping, with a fair lead of kedge anchor warp upto starboard side sheet winch.
- 6 x Seasmart BX32 cleats (4 x midships, 2 x aft).
- Rocna 25kg anchor.
- 70m of 10mm calibrated anchor chain.
- 30m of warp.

#### *Covers, Canvas & Cushions:*

- Laid teak to cockpit seats, and cockpit sole.
- Sprayhood in beige chine with hide covered grab bar and small grab bars to both sides.
- Cockpit seat base cushions using drainable foam in beige chine with dark brown piping to cushions.
- Full bimini in beige chine, free standing with side mesh panels (zip detachable) for roll up straps. Low edge attaches to upper guardrail with bungee and hooks.

#### *Tender & Outboard:*

- Transom reinforced for fitting of davits.

#### *Safety Equipment:*

- 4 x Stainless steel safety harness attachment points in cockpit.
- 6 person liferaft, fitted under cockpit seat.

#### *Fire-fighting equipment:*

- LPG gas and carbon monoxide detection, includes solenoid control switch fit.

---

## **Exclusions**

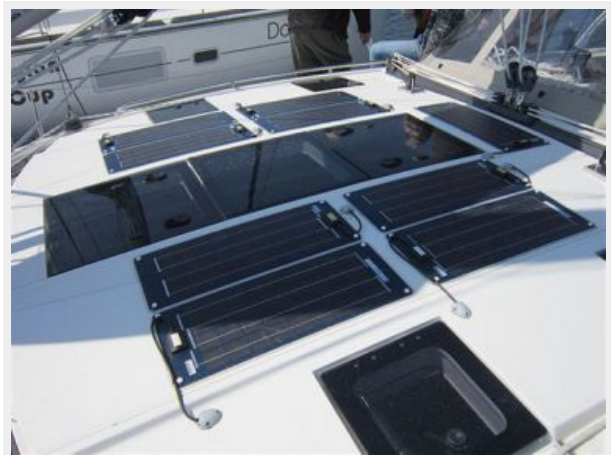
Owner's personal belongings.

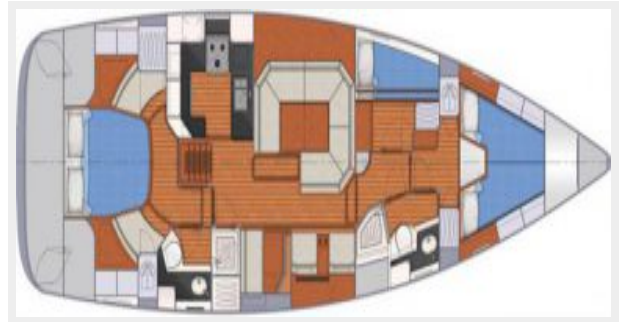
---

## **Disclaimer**

The Company offers the details of this vessel or yacht in good faith but cannot guarantee or warrant the accuracy of this information nor warrant the condition of the vessel. A buyer should instruct his representatives, agents, or his surveyors, to investigate such details as the buyer desires validated. This vessel or yacht is offered subject to prior sale, price change, or withdrawal without notice.

# PHOTOS







# CONTACTS

---

Andrey Shestakov, leading yacht broker of the sales department of Shestakov Yacht Sales Inc. Shestakov Yacht Sales Inc., the official representative of the Miami/Fort Lauderdale FL headquarters.

## Contact details

---

Email: [andrey@shestakovyachtsales.com](mailto:andrey@shestakovyachtsales.com)

Web: [shestakovyachtsales.com/en/](http://shestakovyachtsales.com/en/)

## Telephones

---

USA: +1(954)274-4435

## Office hours

---

Monday – Saturday: **9:00 - 21:00** EDT

Sunday: **closed**

## Address

---



Harbour Towne Marina, 850 NE 3rd St,  
STE 213, Dania, FL 33004