

GATITO — FONTAINE PAJOT



Builder: FONTAINE PAJOT

Year Built: 2007

Model: Catamaran

Price: PRICE ON APPLICATION

Location: United States

LOA: 36' 0" (10.97m)

Beam: 19' 6" (5.94m)

Max Draft: 3' 7" (1.09m)

Our experienced yacht broker, Andrey Shestakov, will help you choose and buy a yacht that best suits your needs **Gatito — FONTAINE PAJOT** from our catalogue. Presently, at Shestakov Yacht Sales Inc., we have a wide variety of yachts available on our sale's list. We also work in close contact with all the big yacht manufacturers from all over the world.

If you would like to buy a yacht **Gatito — FONTAINE PAJOT** or would like help answering any questions concerning purchasing, selling or chartering a yacht, please call **+1(954)274-4435**

TABLE OF CONTENTS

TABLE OF CONTENTS	2
SPECIFICATIONS	4
Basic Information	4
Dimensions	4
Speed, Capacities and Weight	4
Accommodations	4
Hull and Deck Information	4
Engine Information	4
DETAILED INFORMATION	5
Full Description	5
Exclusions	10
Disclaimer	10
PHOTOS	11
Under sail	11
Under sail	11
At anchor	11
At anchor	11
At anchor	11
Helm seat	11
Fresh bottom paint	12
Folding props	12
Bright and airy salon	12
Chart table	12
Galley	12
Galley storage	12
Storage	13
Berth	13
Head	13

Berth	13
Electric head	14
Layout	14
Polars	14
CONTACTS	15
Contact details	15
Telephones	15
Office hours	15
Address	15

SPECIFICATIONS

Basic Information

Category: Catamaran

Model Year: 2007

Year Built: 2007

Country: United States

Dimensions

LOA: 36' 0" (10.97m)

Beam: 19' 6" (5.94m)

Max Draft: 3' 7" (1.09m)

Speed, Capacities and Weight

Displacement: 10000 Pounds

Water Capacity: 140 Gallons

Holding Tank: 20 Gallons

Fuel Capacity: 55 Gallons

Accommodations

Total Cabins: 2

Total Heads: 2

Hull and Deck Information

Hull Material: Fiberglass

Engine Information

Engines: 2

Manufacturer: Volvo

Model: D1-20

Fuel Type: Diesel

DETAILED INFORMATION

Full Description

Description

Designed to make catamaran sailing accessible to new clients at a reasonable budget whilst featuring construction qualities of a prestigious name. The Mahe 36 boasts all the features you would expect in a larger yacht.

Three characteristics define the exciting new Mahe 36:

1. Extremely cost-efficient in terms of size.
2. Exceptionally comfortably and ergonomically designed.
3. Centralised manoeuvring with excellent sea-going qualities.

Accommodations:

THE MAHÉ 36 HAS EVERYTHING YOU WOULD EXPECT TO FIND ON BOARD A BIG BOAT

Innovative exterior design:

- A youthful outline with strong healthy forms
- A sheltered open-plan cockpit and salon
- Freedom of movement on board, up on deck, in the cockpit or down below
- Easy to sail with all sail control lines leading aft to the helm

Engines:

- Twin Volvo D1-20's

SALON LAYOUT:

- Saloon accessible through double sliding door with doormat
- Panoramic view through picture windows and aft bulkhead portlights
- Wall-to-wall carpeting under wooden table
- Storage under the salon settee
- Ventilation through 1 deck hatch + 1 porthole at the port foot of mast + 1 large porthole starboard of mast

- Sycamore woodwork
- Salon/cabin flooring: parquet style wood flooring
- Ceiling made of mildew resistant felt
- Sofa cushions are leather style, “sandy white” colour
- Polyester foam mattresses
- Lighting with halogen spotlights

Galley:

- Granite like counter top with single sink, and draining board
- 1 top accessed trash can, bags removed through separate door
- Pressurized hot and cold freshwater from mixer faucet
- 3 burner stove
- 1 stainless steel gas oven
- 1 x 12V 130 liter refrigerator
- Upper stowage locker, with integrated flatware basket
- Lower stowage locker under sink
- Lighting with adjustable spotlight

Chart table:

- Wooden chart table
- Stowage shelf
- 12 V electrical panel and navigation instruments
- Upper stowage locker
- 12 V socket
- Adjustable spotlight for chart table

Rigging and Sales

Mast and boom:

- Mast and boom in anodized aluminum

- Complete standing rigging
- Ball bearing mainsail luff cars
- 1 tackle on mainsail halyard
- 1 topping lift
- 2 reef pennants
- 1 genoa halyard
- 1 genaker halyard
- Lazy-jacks
- Clutches on genoa halyards and genaker halyards at bottom of mast
- Clutches on reef pennants
- 2 flag halyards
- All reefing lines and main halyard lead aft to the helm station
- Navigation, running and mooring lights
- Deck lighting

Self tailing harken 40 on mast

Sails:

- Full-batten mainsail and genoa
- Roller genoa furler
- 1 mainsheet tackle led aft to coachroof
- Ball bearing mainsheet traveler
- 1 boom brake
- 2 size 40 self-tailing winches for main and genoa sheets

Electrical

Power system:

- 2 x 115A/12V engine alternators
- Port engine start battery and house battery bank of 6 x 120ah = 720 ah gel 2009

- 1 starboard engine batteries of 120Ah gel 2009
- Separator for no maintenance and security
- Manual back-up link
- General 12V distribution panel at chart table protected by fuses
- Voltmeter for onboard batteries
- Spare sockets for extra equipment
- 5000btu reverse cycle AC
- 1800 watts inverter
- 4 x 130 watts solar panels with 2 controllers
- 1 x Aerogen 4 wind generator
- 40 amps shore power charger 110v

Electronics:

- Complete Furuno electronic upgrade: Wind, Depth, Waas GPS, Autopilot, Compass Repeater in salon with extra autopilot remote for inside controls
- Uniden VHF w/remote at helm
- W90 Raymarine w HD radar antenna,
- Digital TV antenna,

Deck and Hull

Helm station:

- Double helmsman seat with custom back with handhold on back
- Instrument console
- Rope clip and bags for sheets and halyards

Cockpit:

- 8 person bench seat with cushions
- 1 cockpit table + 1 small custom cockpit table
- 1 Large cockpit lazerrete

- 2 gas lockers + 1 x 10 gal fiberglass spare

Foredeck:

- 1 large foredeck locker divided into 3 compartments (1 for mooring gear)

Engine compartment and technical holds :

- Accessed deck hatch in cockpit
- Sound proofing
- Neon lighting
- Hull professionally maintained in 11/2012, new bottom paint, complete osmosis inspection

Additional information

Other equipment :

- 2 rudders mechanically linked by stock levers and transversal tube
- 1 emergency tiller
- 1 steering compass
- Pulpits, stanchions with upper and lower guard rails
- 1 swim ladder to port
- 1 hot/cold water deck shower on aft beam
- 7 mooring cleats (2 forward + 2 midships + 2 aft + 1 chain locker)
- 4 fenders
- 2 x 50 ft long dark blue mooring line
- 1 electric windlass with circuit breaker and handheld remote
- Anchor exit under bridgedeck with bridle included – reinforced 11/2012
- 1 stemhead fitting on forward beam
- Anchor fairlead for Danforth and plow anchor
- New trampoline in 2011
- Spare parts kit

Exclusions

Owner's personal belongings.

Disclaimer

The Company offers the details of this vessel or yacht in good faith but cannot guarantee or warrant the accuracy of this information nor warrant the condition of the vessel. A buyer should instruct his representatives, agents, or his surveyors, to investigate such details as the buyer desires validated. This vessel or yacht is offered subject to prior sale, price change, or withdrawal without notice.

PHOTOS

Under sail



Under sail



At anchor



At anchor



At anchor



Helm seat



Fresh bottom paint



Folding props



Bright and airy salon



Chart table



Galley storage



Galley



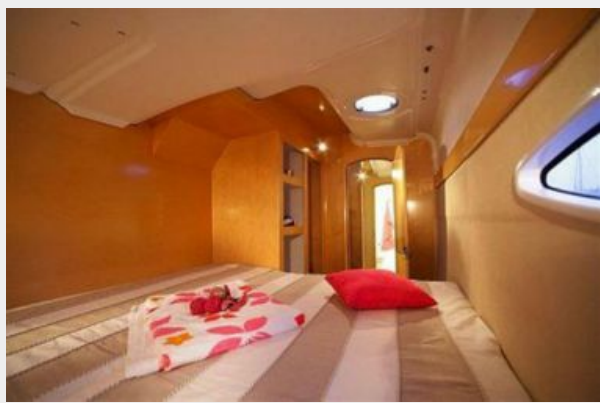
Storage



Berth



Berth



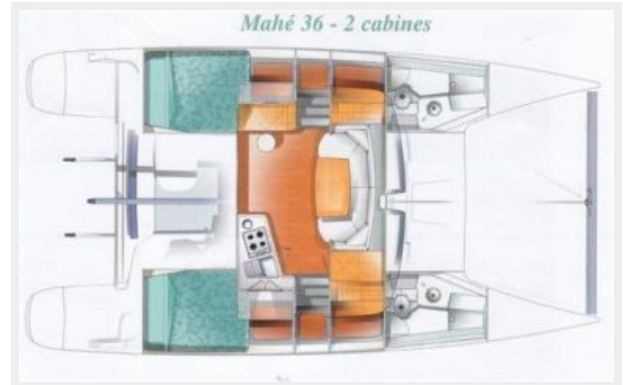
Head



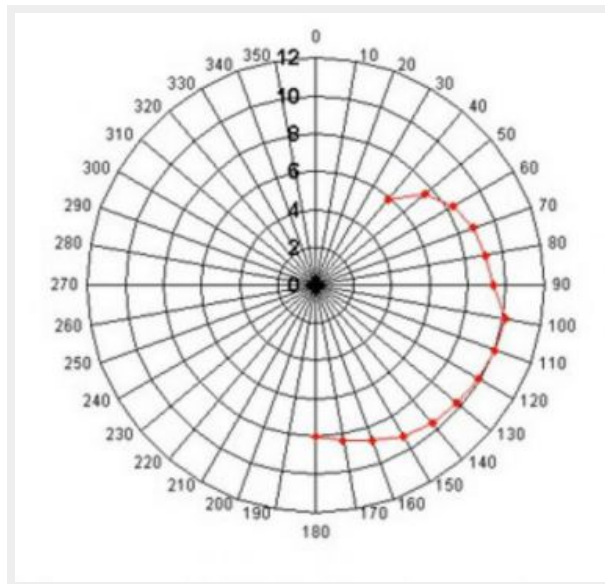
Electric head



Layout



Polars



CONTACTS

Andrey Shestakov, leading yacht broker of the sales department of Shestakov Yacht Sales Inc. Shestakov Yacht Sales Inc., the official representative of the Miami/Fort Lauderdale FL headquarters.

Contact details

Email: andrey@shestakovyachtsales.com

Web: shestakovyachtsales.com/en/

Telephones

USA: +1(954)274-4435

Office hours

Monday – Saturday: **9:00 - 21:00** EDT

Sunday: **closed**

Address



Harbour Towne Marina, 850 NE 3rd St,
STE 213, Dania, FL 33004