

C. ECHO I — TAHA EL' GENDY



Builder: [Taha el' Gendy](#)

Year Built: 2002

Model: Cruiser

Price: PRICE ON APPLICATION

Location: Egypt

LOA: 101' 9" (31.00m)

Beam: 25' 6" (7.75m)

Max Draft: 6' 5" (1.95m)

Our experienced yacht broker, Andrey Shestakov, will help you choose and buy a yacht that best suits your needs **C. Echo I — Taha el' Gendy** from our catalogue. Presently, at Shestakov Yacht Sales Inc., we have a wide variety of yachts available on our sale's list. We also work in close contact with all the big yacht manufacturers from all over the world.

If you would like to buy a yacht **C. Echo I — Taha el' Gendy** or would like help answering any questions concerning purchasing, selling or chartering a yacht, please call **+1(954)274-4435**

TABLE OF CONTENTS

TABLE OF CONTENTS	2
SPECIFICATIONS	3
Overview	3
Basic Information	3
Dimensions	3
Speed, Capacities and Weight	3
Accommodations	3
Hull and Deck Information	3
Engine Information	4
DETAILED INFORMATION	5
Accommodations	5
Scuba Diving Equipment	5
Safety Equipment	5
Navigation	5
Exclusions	5
Disclaimer	5
PHOTOS	6
CONTACTS	8
Contact details	8
Telephones	8
Office hours	8
Address	8

SPECIFICATIONS

Overview

C. Echo I boasts accommodations for 24 guests in 12 double, en suite, air conditioned cabins (no bunk beds) with minibar and TV. C. Echo I is equipped with scuba equipment: 12 1 aluminum DIN/INT and 2 x BAUER Mariner Compressors + nitrox Membrane. She offers a large air conditioned saloon with Video/TV and audio and expansive dive deck.

Basic Information

Category: Cruiser

Model Year: 2002

Year Built: 2002

Refit Year: 2013

Country: Egypt

Dimensions

LOA: 101' 9" (31.00m)

Beam: 25' 6" (7.75m)

Max Draft: 6' 5" (1.95m)

MFG Length: 101' 9" (31.00m)

Speed, Capacities and Weight

Water Capacity: 399 Gallons

Fuel Capacity: 456 Gallons

Accommodations

Total Cabins: 12

Total Berths: 24

Sleeps: 24

Hull and Deck Information

Hull Material: Wood

Engine Information

Engines: 2

Manufacturer: MAN

Engine Type: Inboard

Fuel Type: Diesel

DETAILED INFORMATION

Accommodations

C. Echo I can accommodate 24 guests in 12 en suite, air conditioned, twin (no bunks) cabins with mini bar and TV.

Scuba Diving Equipment

12 1 aluminum DIN/INT Compressors: 2 x BAUER Mariner (below deck) + nitrox Membrane

Safety Equipment

2 life rafts and life jackets 2 dinghies with outboard engine (25hp & 40hp) First Aid: Oxygen and first aid kit

Navigation

Radar, GPS, Sounder

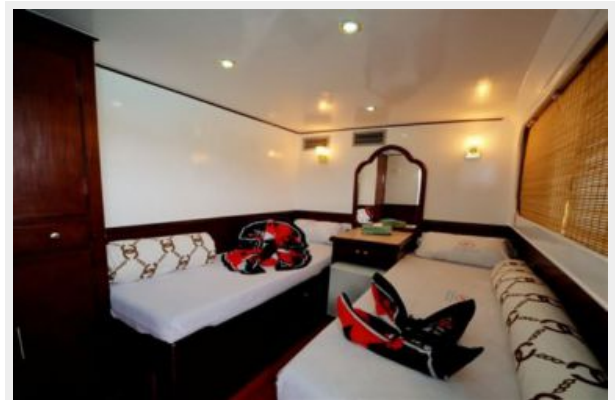
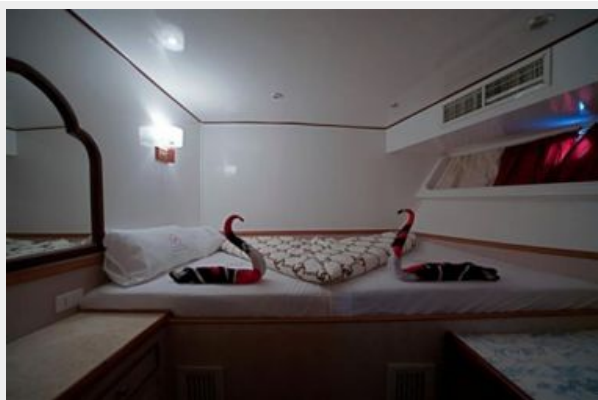
Exclusions

Owner's personal belongings.

Disclaimer

The Company offers the details of this vessel or yacht in good faith but cannot guarantee or warrant the accuracy of this information nor warrant the condition of the vessel. A buyer should instruct his representatives, agents, or his surveyors, to investigate such details as the buyer desires validated. This vessel or yacht is offered subject to prior sale, price change, or withdrawal without notice.

PHOTOS





CONTACTS

Andrey Shestakov, leading yacht broker of the sales department of Shestakov Yacht Sales Inc. Shestakov Yacht Sales Inc., the official representative of the Miami/Fort Lauderdale FL headquarters.

Contact details

Email: andrey@shestakovyachtsales.com

Web: shestakovyachtsales.com/en/

Telephones

USA: +1(954)274-4435

Office hours

Monday – Saturday: **9:00 - 21:00** EDT

Sunday: **closed**

Address



Harbour Towne Marina, 850 NE 3rd St,
STE 213, Dania, FL 33004