

GYPSY SOUL — HATTERAS



Builder: HATTERAS

Year Built: 1994

Model: Sport Fisherman

Price: PRICE ON APPLICATION

Location: United States

LOA: 54' 0" (16.46m)

Beam: 17' 4" (5.28m)

Min Draft: 5' 4" (1.63m)

Max Draft: 5' 4" (1.63m)

Cruise Speed: 24 Kts. (28 MPH)

Max Speed: 28 Kts. (32 MPH)

Our experienced yacht broker, Andrey Shestakov, will help you choose and buy a yacht that best suits your needs **Gypsy Soul — HATTERAS** from our catalogue. Presently, at Shestakov Yacht Sales Inc., we have a wide variety of yachts available on our sale's list. We also work in close contact with all the big yacht manufacturers from all over the world.

If you would like to buy a yacht **Gypsy Soul — HATTERAS** or would like help answering any questions concerning purchasing, selling or chartering a yacht, please call **+1(954)274-4435**

TABLE OF CONTENTS

TABLE OF CONTENTS	2
SPECIFICATIONS	4
Overview	4
Basic Information	4
Dimensions	4
Speed, Capacities and Weight	4
Accommodations	5
Hull and Deck Information	5
Engine Information	5
DETAILED INFORMATION	6
Salon	6
Dinette	6
Galley	6
Master Stateroom	6
Master Head	7
Forward Stateroom	7
Guest Head	7
Starboard Stateroom	8
Helm	8
Flybridge	8
Electronics	8
Electrical System	9
Mechanical Equipment	9
Engine Room	9
Cockpit	10
Decks	10
Companionway	10
Exclusions	11

Broker's Remarks	11
Exclusions	11
Disclaimer	11
PHOTOS	12
CONTACTS	19
Contact details	19
Telephones	19
Office hours	19
Address	19

SPECIFICATIONS

Overview

This vessel is nicely appointed on the interior with a spacious and well designed interior accommodations plan. Recently, one engine was totally rebuilt. The other has approximately 1,000 hours. This is a nice boat for fishing or cruising and is seriously for sale. The diagonal galley configuration opens up the salon considerably. The flybridge is immense. The cockpit is a 150 sq. ft. battle station. This is one of the best overall boats ever built by Hatteras yacht.

Basic Information

Category: Sport Fisherman

Sub Category: Convertible

Model Year: 1995

Year Built: 1994

Country: United States

Vessel Top: Hardtop

Fly Bridge: Yes

Cockpit: Yes

Dimensions

LOA: 54' 0" (16.46m)

Beam: 17' 4" (5.28m)

Min Draft: 5' 4" (1.63m)

Max Draft: 5' 4" (1.63m)

Speed, Capacities and Weight

Cruise Speed: 24 Kts. (28 MPH)

Cruise Speed RPM: 2100 Kts.

Max Speed: 28 Kts. (32 MPH)

Max Speed RPM: 2300 Kts.

Displacement: 70000 Pounds

Water Capacity: 200 Gallons

Holding Tank: 75 Gallons

Fuel Capacity: 1320 Gallons

Accommodations

Total Cabins: 3

Total Berths: 4

Sleeps: 6

Total Heads: 2

Hull and Deck Information

Hull Material: Fiberglass

Engine Information

Engines: 2

Manufacturer: Detroit Diesel

Model: 12V92

Engine Type: Inboard

Fuel Type: Diesel

DETAILED INFORMATION

Salon

- "L" Shaped sofa
- Occasional chair
- Entertainment center
- Electrical panel
- Storage lockers
- Designer coffee table
- Blinds
- Air conditioning
- Table with lamp
- Carpeting
- Ice maker
- Bose surround sound system

Dinette

- "L" Shaped dinette
- Corian dinette table
- Seating for 4 persons

Galley

- Diagonal galley opens up salon
- Upright refrigerator, Whirlpool
- 4 Burner range top, Magic Chef
- Microwave Oven, Sharp
- Sink
- Storage cabinets
- Corian countertop
- Storage bins
- Storage drawers
- Garbage disposal
- Water tank gauges
- Whirlpool trash compactor

Master Stateroom

- Queen berth/walk around
- Mirrored head board
- Decorative lamps
- Closet
- End table
- Make-up vanity
- Carpeting
- Storage drawers
- Chest of drawers
- TV
- Custom coverlets and pillows
- Stereo

Master Head

- Sink
- Mirrored Vanity
- Toilet
- Stall shower
- Storage beneath vanity
- Medicine cabinet

Forward Stateroom

- Queen berth/island style
- Mirrored bulkhead
- Decorative lamps
- Hanging closet
- Storage drawers
- TV
- Storage lockers, port and starboard
- Custom coverlet and pillows

Guest Head

- Sink
- Mirrored vanity
- Toilet
- Stall shower
- Storage beneath vanity
- Medicine cabinet

Starboard Stateroom

- Upper/lower bunks
- Closet
- Storage drawers
- Custom coverlet and pillows

Helm

- Helm seat
- Companion seat
- Controls and steering
- Gauges
- Switches
- Vessel alarm/monitoring system
- Compass
- Recessed electronics panel
- Storage lockers
- 2 Rod holders, aft bridge rail
- DDEC Electronic controls
- Fuel gauges
- Engine synchronizer

Flybridge

- Large expansive flybridge
- Port side lounge seating
- Forward lounge seating
- Control console
- Fiberglass hardtop
- Teaser reels
- Storage beneath lounge seats
- Three sided enclosure
- Quartz spreader lights
- Running and navigation lights
- (2) Stereo speakers

Electronics

- Furuno radar
- Furuno FCV 1100L Bottom Machine

- Sea 222 SSB Radio
- KVH SAT TV
- Big Boy monitor screen
- ICOM ICM 127 VHF Radio
- Auto pilot, Robertson AP300X
- Alpine AM/FM stereo
- Northstar 951 GPS
- Furuno Navnet GPS
- Robertson depth meter

Electrical System

- 28 Kw generator, Phasor
- Batteries 8 volt
- 120/240 AC system
- 12V DC system
- 24V DC system
- Circuit breakers
- Battery charger

Mechanical Equipment

- Windlass
- Hydraulic steering
- Hydraulic trim tabs

Engine Room

- 2-12V92 Detroit Diesel engines
- Generator
- Air conditioning systems
- Water heater
- Water pumps
- Bilge pumps
- Fire suppression system
- Blower
- Block heaters for engines
- Compressors
- Dual Racor filters
- Oil change system
- Fuel priming pumps

- Air circulation fans
- DC lights
- AC lights
- HRO systems, watermaker

Cockpit

- Cockpit sunshade
- Fighting chair
- Transom door with gate
- Freshwater washdown
- Saltwater washdown
- Tackle locker
- Bait freezer
- Engine room entry
- Dockside cable TV inlet
- Livewell
- Bait prep area
- 6 each, rod holders
- (2) Fishboxes in cockpit sole
- Cockpit bolsters
- Molded tackle center
- Dockside water connections
- Stereo speakers

Decks

- Davit on foredeck, Marquipt
- Bow pulpit
- Bow rail
- Chocks for jet ski
- Chocks for dinghy
- Emergency canister life raft, Switlik, 6 man
- Triple spreader outriggers
- Anchor with rode
- Three deck hatches
- Water outlet at anchor pulpit

Companionway

- Washer and dryer

- Linen storage
- Storage lockers port and starboard
- Hand rails

Exclusions

Tackle, fishing equipment and owners personal items. Name "Gypsy Soul" is reserved.

Broker's Remarks

Owner wants this boat sold ASAP.

Exclusions

Owner's personal belongings.

Disclaimer

The Company offers the details of this vessel or yacht in good faith but cannot guarantee or warrant the accuracy of this information nor warrant the condition of the vessel. A buyer should instruct his representatives, agents, or his surveyors, to investigate such details as the buyer desires validated. This vessel or yacht is offered subject to prior sale, price change, or withdrawal without notice.

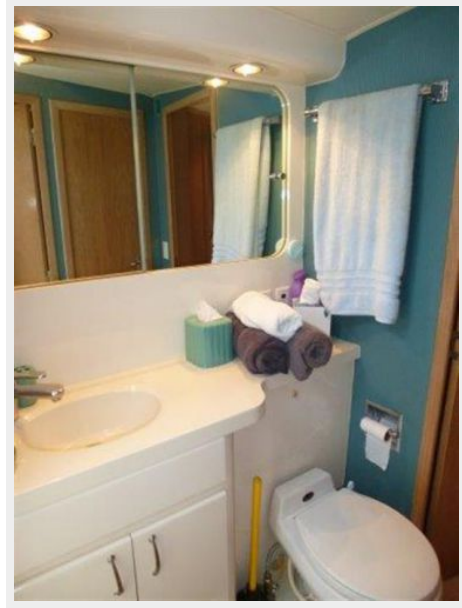
PHOTOS















CONTACTS

Andrey Shestakov, leading yacht broker of the sales department of Shestakov Yacht Sales Inc. Shestakov Yacht Sales Inc., the official representative of the Miami/Fort Lauderdale FL headquarters.

Contact details

Email: andrey@shestakovyachtsales.com

Web: shestakovyachtsales.com/en/

Telephones

USA: +1(954)274-4435

Office hours

Monday – Saturday: **9:00 - 21:00** EDT

Sunday: **closed**

Address



Harbour Towne Marina, 850 NE 3rd St,
STE 213, Dania, FL 33004