

## 10 & 2 — TOWNSEND BAY MARINE



**Builder:** TOWNSEND BAY MARINE

**Year Built:** 2006

**Model:** Trawler

**Price:** PRICE ON APPLICATION

**Location:** United States

**LOA:** 51' 0" (15.54m)

**Beam:** 14' 5" (4.39m)

**Min Draft:** 5' 6" (1.68m)

**Max Draft:** 6' 6" (1.98m)

Our experienced yacht broker, Andrey Shestakov, will help you choose and buy a yacht that best suits your needs 10 & 2 — TOWNSEND BAY MARINE from our catalogue. Presently, at Shestakov Yacht Sales Inc., we have a wide variety of yachts available on our sale's list. We also work in close contact with all the big yacht manufacturers from all over the world.

If you would like to buy a yacht 10 & 2 — TOWNSEND BAY MARINE or would like help answering any questions concerning purchasing, selling or chartering a yacht, please call +1(954)274-4435

---

# TABLE OF CONTENTS

---

TABLE OF CONTENTS	2
SPECIFICATIONS	3
Overview	3
Basic Information	3
Dimensions	3
Speed, Capacities and Weight	4
Accommodations	4
Hull and Deck Information	4
Engine Information	4
PHOTOS	5
CONTACTS	10
Contact details	10
Telephones	10
Office hours	10
Address	10

# SPECIFICATIONS

---

## Overview

---

**Custom built in the USA - with the icy Northwest Passage and long-range, self-sufficient cruising in mind.**

**10 & 2** is a remarkably capable and dependable ocean traveling yacht. Combining a proven George Buehler hull design with top-notch American construction from the skilled craftsmen at Townsend Bay Marine in Port Townsend, Washington; this custom USA-built trawler is heads and shoulders above her sisters. For the experienced and discriminating yachtsman, this exceptional build quality combined with top of the line equipment and robust systems represents the ideal long-range cruiser for the Northwest Passage, Pacific Northwest, Alaska, and beyond. The pride and experience incorporated in this distinctly handsome little ship is quickly recognized.

Hull of 1/4, 5/16 and 1/2" inch steel plate construction; single 105 HP Lugger with 1400 gallons fuel offers a range of 3000 to 4500+ mile range; Hundested variable pitch propeller; articulating rudder; four cylinder, 30 HP Lugger "pony motor" for "get home" and battery charging; hydraulic (horizontal drum) anchor windlass with 50' of 1/2 " chain and 550' x 1/2" stainless steel wire; two hydraulic warping winches; Naiad stabilizers; mast with steadying sail and crow's nest; extensive electronics suite and complete safety kit... and that's just the beginning! A whole lot of ship in an easily managed 47' package.

## Basic Information

---

**Category:** Trawler

**Model Year:** 2006

**Year Built:** 2006

**Country:** United States

## Dimensions

---

**LOA:** 51' 0" (15.54m)

**LWL:** 46' 0" (14.02m)

**Beam:** 14' 5" (4.39m)

**Min Draft:** 5' 6" (1.68m)

**Max Draft:** 6' 6" (1.98m)

---

## Speed, Capacities and Weight

---

**Displacement:** 68000 Pounds

**Water Capacity:** 300 Gallons

**Holding Tank:** 150 Gallons

**Fuel Capacity:** 1400 Gallons

---

## Accommodations

---

**Total Cabins:** 2

**Total Berths:** 3

**Total Heads:** 2

---

## Hull and Deck Information

---

**Hull Material:** Steel

**Hull Finish:** Stainless Steel

---

## Engine Information

---

**Engines:** 1

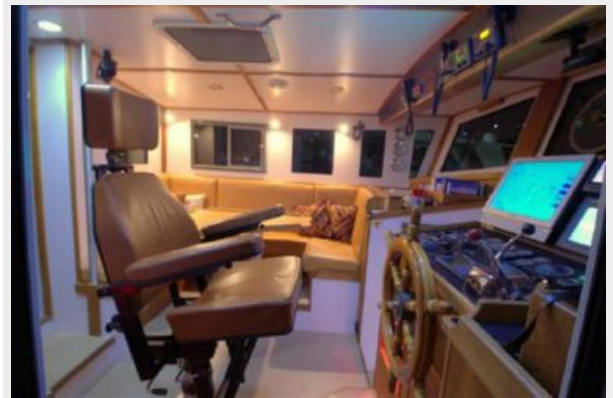
**Manufacturer:** Luggier

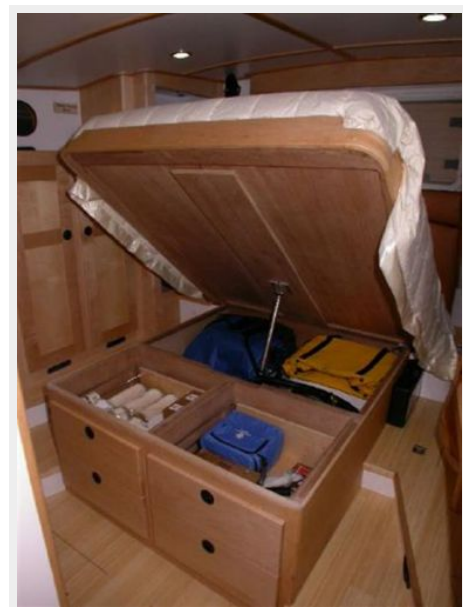
**Model:** LP668D

**Engine Type:** Inboard

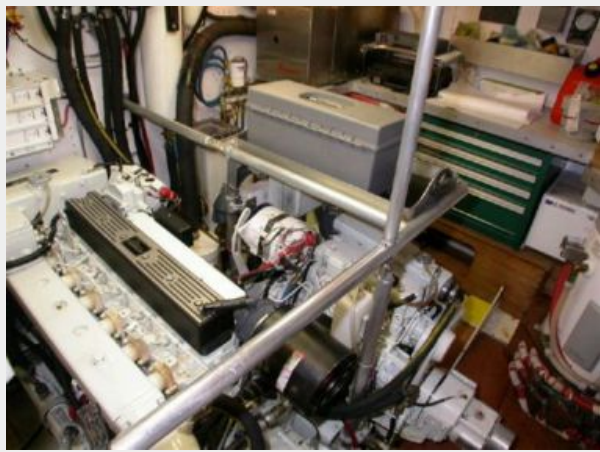
**Fuel Type:** Diesel

# PHOTOS













# CONTACTS

---

Andrey Shestakov, leading yacht broker of the sales department of Shestakov Yacht Sales Inc. Shestakov Yacht Sales Inc., the official representative of the Miami/Fort Lauderdale FL headquarters.

## Contact details

---

Email: [andrey@shestakovyachtsales.com](mailto:andrey@shestakovyachtsales.com)

Web: [shestakovyachtsales.com/en/](http://shestakovyachtsales.com/en/)

## Telephones

---

USA: +1(954)274-4435

## Office hours

---

Monday – Saturday: **9:00 - 21:00** EDT

Sunday: **closed**

## Address

---



Harbour Towne Marina, 850 NE 3rd St,  
STE 213, Dania, FL 33004