

OUR TRADE — LAZZARA



Builder: LAZZARA

Year Built: 2001

Model: Motor Yacht

Price: PRICE ON APPLICATION

Location: United States

LOA: 80' 0" (24.38m)

Beam: 19' 1" (5.82m)

Min Draft: 4' 6" (1.37m)

Cruise Speed: 22 Kts. (25 MPH)

Max Speed: 24 Kts. (28 MPH)

Our experienced yacht broker, Andrey Shestakov, will help you choose and buy a yacht that best suits your needs **Our Trade — LAZZARA** from our catalogue. Presently, at Shestakov Yacht Sales Inc., we have a wide variety of yachts available on our sale's list. We also work in close contact with all the big yacht manufacturers from all over the world.

If you would like to buy a yacht **Our Trade — LAZZARA** or would like help answering any questions concerning purchasing, selling or chartering a yacht, please call **+1(954)274-4435**

TABLE OF CONTENTS

TABLE OF CONTENTS	2
SPECIFICATIONS	5
Overview	5
Basic Information	5
Dimensions	5
Speed, Capacities and Weight	5
Accommodations	6
Hull and Deck Information	6
Engine Information	6
DETAILED INFORMATION	7
Accommodations	7
Exclusions	10
Disclaimer	10
PHOTOS	11
Main Salon	11
Main Salon	11
Main Salon Settee	11
Main Salon Bar	11
Galley	11
Galley	11
Day Head	12
Galley	12
Master Stateroom	12
Master Stateroom	12
Master Stateroom	12
Master Stateroom	12
Master Stateroom Head	13
Master Stateroom Closet	13

Washer/Dryer	13
Aft Foyer	13
Port VIP Stateroom	14
Starboard VIP Stateroom	14
Fwd Office	14
VIP Head	14
Fwd Head	14
Bow Stateroom	14
Fwd Stateroom	15
Bow Head	15
Sky Lounge	15
Sky Lounge	15
Cabriolet Sky Lounge	15
Cabriolet Sky Lounge	15
Port Side Sky Lounge	16
Stbd Side Sky Lounge	16
Flybridge Freezer Box	16
Flybridge Seating	16
Engineroom	16
Engineroom	16
Engineroom	17
Engineroom	17
Cockpit	17
Aft Deck Bar	17
Logo	17
CONTACTS	18
Contact details	18
Telephones	18
Office hours	18

Address

18

SPECIFICATIONS

Overview

OUR TRADE is a 2001 Lazzara Cockpit 80 with a Cabriolet Skylounge Flybridge. With Naiad stabilizers, golden maple high gloss wood interior, five staterooms, six heads, office, country kitchen, enclosed or open flybridge, marble flooring, marble countertops, two sets of washer/dryer, state-of-the-art entertainment and navigation system you won't find a yacht that offers more flexibility, comfort and innovation than this Lazzara 80.

Basic Information

Category: Motor Yacht

Sub Category: Cockpit

Model Year: 2001

Year Built: 2001

Country: United States

Fly Bridge: Yes

Cockpit: Yes

Dimensions

LOA: 80' 0" (24.38m)

Beam: 19' 1" (5.82m)

Min Draft: 4' 6" (1.37m)

Speed, Capacities and Weight

Cruise Speed: 22 Kts. (25 MPH)

Max Speed: 24 Kts. (28 MPH)

Displacement: 200000 Pounds

Water Capacity: 350 Gallons

Holding Tank: 150 Gallons

Fuel Capacity: 2200 Gallons

Accommodations

Total Cabins: 5

Total Berths: 6

Hull and Deck Information

Hull Material: Fiberglass

Deck Material: Fiberglass

Hull Color: White

Hull Finish: Polyethylene

Hull Designer: Dick Lazzara

Engine Information

Engines: 2

Manufacturer: MTU

Model: 183

Fuel Type: Diesel

DETAILED INFORMATION

Accommodations

The combination of cockpit and cabriolet skylounge was one of the most innovative and desirable options Lazzara Yachts ever offered. The Cabriolet Skylounge Flybridge features the ability for you to either fully open or enclose the air conditioned flybridge. In the open position the side windows slide all the way aft revealing an 8' opening on either side. In addition the forward three windows retract into the flybridge with the push of a button. This flybridge offers the ability to either be fully open or enclosed and completely air conditioned. Few yachts in the world can offer the flexibility that this Lazzara 80 does.

Not only do you have an innovative and flexible flybridge there is also the full fishing cockpit complete twin fighting chairs, bait and tackle center, fish boxes, and more.

Upgrades:

- **Hydraulic Naiad Stabilizers**
- **LCD TV's throughout**
- **Black painted window line**
- **Twin cockpit fighting chairs**
- **Larger SAT Dome**
- **New Carpet below deck**
- **New headliner throughout**

Salon • Large Heavy Duty Sliding Glass and Stainless Steel Doors • Fully Carpeted Salon in High Quality Berber • L-Shaped Lounge Sofa w/Cocktail Table and Starboard Side table w/Lamp • Retractable Shades on the Port And Starboard Side Windows • Two Barrel Chairs Starboard Side • Forward Bulkhead with Stemware Storage • Forward Salon Port Side Bar w/3 Stools & Granite Bar Top • Bar with Stainless Steel Sink, Dishwasher and Ice maker • Maple Flooring in the Bar • Aft Starboard Side Entertainment Center w/ 32" TV/ Video, Audio Components • 42" flat Screen TV • Starboard Side Console w/Avanti 20 Bottle Wine Fridge • Central Vac System • Birdseye Maple Cabinetry w/Granite Counter Tops • Forward Starboard Side Stairs to Lower Staterooms Dinette • Forward Raised L-Shaped Banquette w/Granite Top Table • Maple Flooring • Storage under Settee • Panoramic Viewing • Pleated Shades • LG 24" LCD TV

Galley • Country Kitchen w/Granite Counter Tops • Frigidaire 4 Burner CookTop • Franke Double Sided Stainless Steel Sink w/Grohe Faucet & Spray Handle • ISE Insta-Hot Water Faucet • Frigidaire Dishwasher • KitchenAid Trash Compactor • Frigidaire Professional Series Microwave/Convention Oven • Frigidaire Stainless Oven

Master Stateroom • Full Beam Master w/ Centerline King Size Bed • L-shaped Settee Banquette on the Port Side • 27" Magnavox LCD TV, JVC Stereo, Video Receivers • Birdseye

Maple Cabinetry • Double Cassette Player/CD Changer • Plush Carpeting • Large Walk-in Closet • Overhead Lighting • Side Vanity Shelf/ Seat • Sconce Lighting • Night Stands • Indirect Lighting • Ensuite Master • Privacy Door • Hanging Lockers on the Port and Starboard side

Master Head • Double Sinks w/ Vanity and Storage • Microphor Compressed Air Marine Toilet • Maple Privacy Door • Overhead Lighting • Marble Flooring • Full Storage Cabinets/Medicine Cabinets • Solid Surface Counter Top • Shower Stall • Towel Bars • Hand towel Bars • Soap Holders

Starboard VIP Stateroom

• Starboard Side Stateroom w/ Head • Double Berth w/Maple Cabinetry • Hang-up Locker • Maple Wood Privacy Doors • Book/Storage Shelves • Corner Table w/Storage • Interphone • TV and DVD Player • Ensuite Head w/Shower Stall • Designer Bedspread and Pillows • Mirrored Headboard • Portlights • AC Control

Starboard VIP Head

• Mirrored Wall • Shower Stalls • Privacy Doors • Toilet • Sink and counter top

Port VIP Stateroom

• Starboard Side Stateroom w/ Head • Double Berth w/Maple Cabinetry • Hang-up Locker • Maple Wood Privacy Doors • Book/Storage Shelves • Corner Table w/Storage • Interphone • TV and DVD Player • Ensuite Head w/Shower Stall • Designer Bedspread and Pillows • Mirrored Headboard • Portlights • AC Control

Port VIP Head

• Mirrored Wall • Shower Stalls • Privacy Doors • Toilet • Sink and counter top

Helm

• Enclosed Sky lounge Bridge • Large Instrument Panel w/ full screens • Navigation Station w/ Keyboard • Stidd Companion Chair w/Arm and Foot Rest • Electronic Engine controls • Bow Truster Control • Stidd Helm Chair w/Arm and Foot Rest • Night bridge lighting • Windshield Wiper • Electric Opening Front Windshield • 2-Dell 17" Computer Monitors • 1- Big Bay 17" Radar Monitor • Niad Stabilizer Controls • Viacom Video Camera System Engine Room and Aft Deck • SeaTel Coastal 30 US & Caribbean • Trim Tab Controls • KVH Fleet 33 TracPhone • Furuno GPS Navigation Plotter • KVH Flexgate Electric Compass • Furuno FC582L Bottom Machine • Nobeltec 72 Mile Radar • Simrad AP25 Autopilot w/ Hand Held Remote • Standard Horizon GPS 170C • Icom VHF M520, Simrad RS87 VHF's • Raytheon ST60 TriData • EPIRB ACR 406 • Jabsco Remote Spotlight • Simrad RS87 VHF • SEA Hailer • Furuno FX30 Weatherfax • Seatel Coastal 30 • KVH Fleet 33 TracPhone interfaced Satellite System 25 • Color Viacom Video Camera System w/2 Cameras • Nobeltec Systems • Cell Phone Booster

Electrical System

• 2, 21.5 KW Onan Generators w/Sound Shields • 2, 24V Charles 5000 Series Chargers • Heavy Duty Gel Cell Batteries 12 & 24 Volt • AC/DC Master Circuit Breaker Panels • Vapor-proof Battery Switches • Volt Meters • Shore Power "Y" Smart Box • Automatic Shore Chord Reel • Volt Meters • Isolation Transformer • Color Coded Wiring System • Telephone & Cable TV Inlets • 110 & 24 Volt Lighting Systems • Lazzara Custom Power Distribution Panels • Lazzara Custom Color Coated Wiring Harness • 40 Gal Hot Water Heater • Stackable Washer/Dryer • Head Hunter Marine Ozone Generator Odor Control System • Wesmar Electric Blow Thruster • Electronic Fluxgate Flush Mounted Compass

Mechanical Equipment

• 24V Windlass w/ Remote, 300 feet of 1/2 Chain • 2-Concealed Davits located aft on the Bridge • Sea Recovery Aqua Wiper Watermaker 40GPH • Sea Recovery Oil/Water Separators • Dual Racor Fuel Filters • Fuel Priming Pumps for Main Engines and Generators - 24 Volt • Fuel Transfer Pumps • Rule and Ultra switch Bilge Pumps • Jabsco Spot Light w/Remote • Trumpet Compressed Air Horn • Glendinning Cable Master System • Holding Tank w/ Macerator • 8 Cruise air Air conditioners w/ Controls • Brownies Third Lung dive tank fill compressor system • Oil Transfer Pumps • Trim Tab System • 50 Gallon Fresh Oil Reservoir • Oil Change System

Aft Deck

• Full Teak Deck • Port Side Steps to aft deck • Starboard side L-Lounge Settee w/Table/Storage • Two Individual deck Chairs w/ Pads • Stainless Steel Hand Rails • Boarding Gates • Teak Steps Port and Starboard • Ladder to the Bridge • Stainless Steel Safety Gate • Aft Deck Bar w/Sink/Refrigerator/ Corian Counter Top • Stainless Steel Sliding Glass Door to Salon • Ice maker • Camera • Port Side Lounge w/Table and Storage • Tinted Glass Overhead Lighting

Cockpit • Four Steps w/Teak Treads to Aft Deck • Two Blue Water Custom Teak Fighting Chairs • Transom Door and Gate Engine Room Access Large Cleats • Port Side Storage Cabinet • Starboard Storage Cabinet • Swim Platform • Two Fish Boxes w/ Pump Outs • Coaming Pads • Rod Holders • Marquipt Boarding Ladder

Additional Equipment

• Bronze Spade Rudders • Niad Stabilizers Upgraded • 8 Man Zodiac Life Raft • TrimTab System • Nibral Bronze 4 Bladed • Bronze Thru Hull Fittings • Molded Swim Platform w/Transom Gate • Hardtop Enclosed Bridge • 2.75 Stainless Steel Shafts • 5 Underwater Lights • Engine room Camera • Engine room 240 Vin-line Blower System • ZF Transmissions • Work Bench • Fuel Polishing System • Fresh Water Wash Valve • Oil Change System • Rod Holders • Novurania Tender w/Yamaha 60hp Motor • Accoustical & Thermal Insulation • Tool Cabinets

Exclusions

Owner's personal belongings.

Disclaimer

The Company offers the details of this vessel or yacht in good faith but cannot guarantee or warrant the accuracy of this information nor warrant the condition of the vessel. A buyer should instruct his representatives, agents, or his surveyors, to investigate such details as the buyer desires validated. This vessel or yacht is offered subject to prior sale, price change, or withdrawal without notice.

PHOTOS

Main Salon



Main Salon



Main Salon Bar



Main Salon Settee



Galley



Galley



Galley



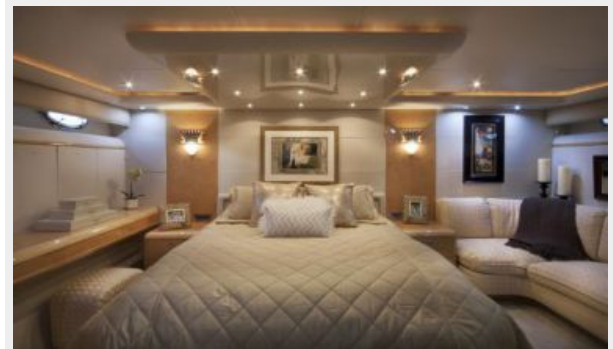
Day Head



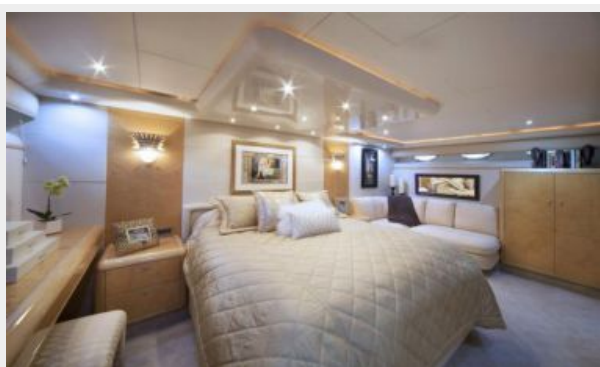
Master Stateroom



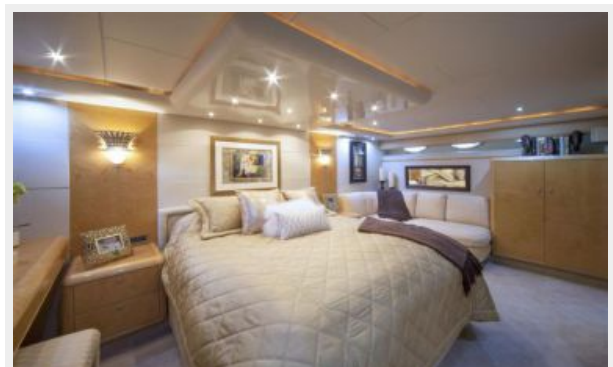
Master Stateroom



Master Stateroom



Master Stateroom



Master Stateroom Head



Master Stateroom Closet



Washer/Dryer



Aft Foyer



Starboard VIP Stateroom



Port VIP Stateroom



VIP Head



Fwd Office



Fwd Head



Bow Stateroom



Fwd Stateroom



Bow Head



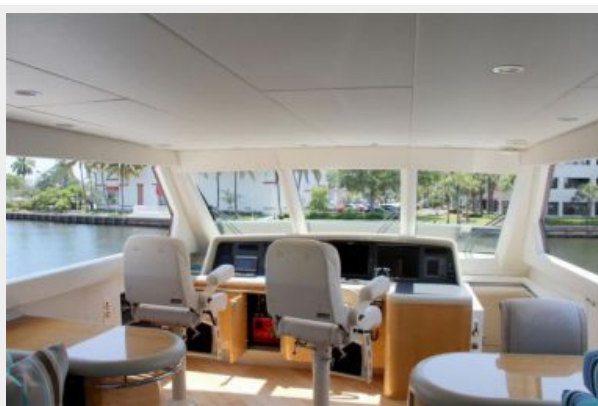
Sky Lounge



Sky Lounge



Cabriolet Sky Lounge



Cabriolet Sky Lounge



Port Side Sky Lounge



Stbd Side Sky Lounge



Flybridge Freezer Box



Flybridge Seating



Engine room



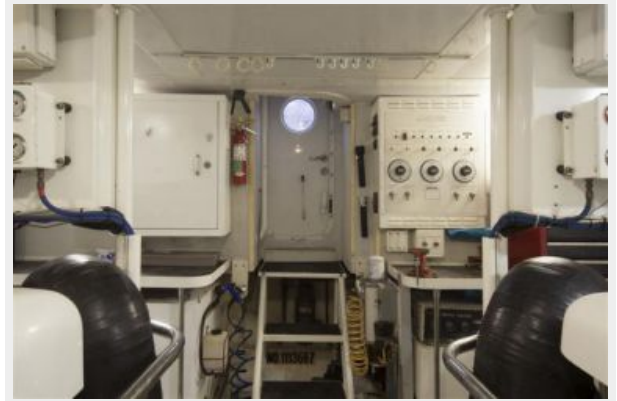
Engine room



Engineerom



Engineerom



Cockpit



Aft Deck Bar



Logo



CONTACTS

Andrey Shestakov, leading yacht broker of the sales department of Shestakov Yacht Sales Inc. Shestakov Yacht Sales Inc., the official representative of the Miami/Fort Lauderdale FL headquarters.

Contact details

Email: andrey@shestakovyachtsales.com

Web: shestakovyachtsales.com/en/

Telephones

USA: +1(954)274-4435

Office hours

Monday – Saturday: **9:00 - 21:00** EDT

Sunday: **closed**

Address



Harbour Towne Marina, 850 NE 3rd St,
STE 213, Dania, FL 33004