

## OUR TRADE — LAZZARA



**Судостроитель:** LAZZARA

**Год постройки:** 2001

**Модель:** Моторная яхта

**Цена:** **ЦЕНА ЯХТЫ ПО ЗАПРОСУ**

**Местонахождение:** United States

**Длина общая:** 80' 0" (24.38m)

**Ширина:** 19' 1" (5.82m)

**Мин. осадка:** 4' 6" (1.37m)

**Крейс. скорость:** 22 Kts. (25 MPH)

**Макс. скорость:** 24 Kts. (28 MPH)

Купить **Our Trade — LAZZARA** а также выбрать подходящую вам яхту из нашего каталога яхт вам поможет опытный яхтенный брокер Андрей Шестаков. На сегодняшний день компания **Shestakov Yacht Sales Inc.** имеет большое количество яхт в собственном списке продаж, а также тесно сотрудничает со всеми крупными яхтенными производителями по всему миру.

Для того чтобы купить яхту **Our Trade — LAZZARA** а также проконсультироваться по любому вопросу связанному с покупкой, продажей, чартером яхт позвоните по телефону **+7(918)465-66-44**.

# ОГЛАВЛЕНИЕ

|                               |    |
|-------------------------------|----|
| ОГЛАВЛЕНИЕ                    | 2  |
| ХАРАКТЕРИСТИКИ                | 5  |
| Обзор                         | 5  |
| Основная информация           | 5  |
| Размеры                       | 5  |
| Скорость, вместимость и масса | 5  |
| Размещение                    | 6  |
| Корпус и палуба               | 6  |
| Информация о двигателе        | 6  |
| ПОДРОБНОЕ ОПИСАНИЕ            | 7  |
| Accommodations                | 7  |
| Исключения                    | 10 |
| Отказ от ответственности      | 10 |
| ФОТОГРАФИИ                    | 11 |
| Main Salon                    | 11 |
| Main Salon                    | 11 |
| Main Salon Settee             | 11 |
| Main Salon Bar                | 11 |
| Galley                        | 11 |
| Galley                        | 11 |
| Day Head                      | 12 |
| Galley                        | 12 |
| Master Stateroom              | 12 |
| Master Stateroom              | 12 |
| Master Stateroom              | 12 |
| Master Stateroom              | 12 |
| Master Stateroom Head         | 13 |
| Master Stateroom Closet       | 13 |

|                         |           |
|-------------------------|-----------|
| Washer/Dryer            | 13        |
| Aft Foyer               | 13        |
| Port VIP Stateroom      | 14        |
| Starboard VIP Stateroom | 14        |
| Fwd Office              | 14        |
| VIP Head                | 14        |
| Fwd Head                | 14        |
| Bow Stateroom           | 14        |
| Fwd Stateroom           | 15        |
| Bow Head                | 15        |
| Sky Lounge              | 15        |
| Sky Lounge              | 15        |
| Cabriolet Sky Lounge    | 15        |
| Cabriolet Sky Lounge    | 15        |
| Port Side Sky Lounge    | 16        |
| Stbd Side Sky Lounge    | 16        |
| Flybridge Freezer Box   | 16        |
| Flybridge Seating       | 16        |
| Engineroom              | 16        |
| Engineroom              | 16        |
| Engineroom              | 17        |
| Engineroom              | 17        |
| Cockpit                 | 17        |
| Aft Deck Bar            | 17        |
| Logo                    | 17        |
| <b>КОНТАКТЫ</b>         | <b>18</b> |
| Контактная информация   | 18        |
| Телефоны                | 18        |
| Время работы            | 18        |

Адрес

---

18

# ХАРАКТЕРИСТИКИ

## Обзор

OUR TRADE is a 2001 Lazzara Cockpit 80 with a Cabriolet Skylounge Flybridge. With Naiad stabilizers, golden maple high gloss wood interior, five staterooms, six heads, office, country kitchen, enclosed or open flybridge, marble flooring, marble countertops, two sets of washer/dryer, state-of-the-art entertainment and navigation system you won't find a yacht that offers more flexibility, comfort and innovation than this Lazzara 80.

## Основная информация

**Тип судна:** Моторная яхта

**Подкатегория:** Кубрик

**Модельный год:** 2001

**Год постройки:** 2001

**Страна:** United States

**Открытая палуба мостика:** Да

**Кубрик:** Да

## Размеры

**Длина общая:** 80' 0" (24.38m)

**Ширина:** 19' 1" (5.82m)

**Мин. осадка:** 4' 6" (1.37m)

## Скорость, вместимость и масса

**Крейс. скорость:** 22 Kts. (25 MPH)

**Макс. скорость:** 24 Kts. (28 MPH)

**Водоизмещение:** 200000 Pounds

**Вместимость воды:** 350 Gallons

**Вместимость сточного бака:** 150 Gallons **Объем топливного бака:** 2200 Gallons

## Размещение

---

**Всего кают:** 5

**Всего коек:** 6

## Корпус и палуба

---

**Материал корпуса:** Fiberglass

**Материал палубы:** Fiberglass

**Цвет корпуса:** White

**Отделка корпуса:** Polyethylene

**Дизайнер корпуса:** Dick Lazzara

## Информация о двигателе

---

**Двигатели:** 2

**Производитель:** MTU

**Модель:** 183

**Тип топлива:** Diesel

# ПОДРОБНОЕ ОПИСАНИЕ

## Accommodations

The combination of cockpit and cabriolet skylounge was one of the most innovative and desirable options Lazzara Yachts ever offered. The Cabriolet Skylounge Flybridge features the ability for you to either fully open or enclose the air conditioned flybridge. In the open position the side windows slide all the way aft revealing an 8' opening on either side. In addition the forward three windows retract into the flybridge with the push of a button. This flybridge offers the ability to either be fully open or enclosed and completely air conditioned. Few yachts in the world can offer the flexibility that this Lazzara 80 does.

Not only do you have an innovative and flexible flybridge there is also the full fishing cockpit complete twin fighting chairs, bait and tackle center, fish boxes, and more.

### Upgrades:

- **Hydraulic Naiad Stabilizers**
- **LCD TV's throughout**
- **Black painted window line**
- **Twin cockpit fighting chairs**
- **Larger SAT Dome**
- **New Carpet below deck**
- **New headliner throughout**

**Salon** • Large Heavy Duty Sliding Glass and Stainless Steel Doors • Fully Carpeted Salon in High Quality Berber • L-Shaped Lounge Sofa w/Cocktail Table and Starboard Side table w/Lamp • Retractable Shades on the Port And Starboard Side Windows • Two Barrel Chairs Starboard Side • Forward Bulkhead with Stemware Storage • Forward Salon Port Side Bar w/3 Stools & Granite Bar Top • Bar with Stainless Steel Sink, Dishwasher and Ice maker • Maple Flooring in the Bar • Aft Starboard Side Entertainment Center w/ 32" TV/ Video, Audio Components • 42" flat Screen TV • Starboard Side Console w/Avanti 20 Bottle Wine Fridge • Central Vac System • Birdseye Maple Cabinetry w/Granite Counter Tops • Forward Starboard Side Stairs to Lower Staterooms Dinette • Forward Raised L-Shaped Banquette w/Granite Top Table • Maple Flooring • Storage under Settee • Panoramic Viewing • Pleated Shades • LG 24" LCD TV

**Galley** • Country Kitchen w/Granite Counter Tops • Frigidaire 4 Burner CookTop • Franke Double Sided Stainless Steel Sink w/Grohe Faucet & Spray Handle • ISE Insta-Hot Water Faucet • Frigidaire Dishwasher • KitchenAid Trash Compactor • Frigidaire Professional Series Microwave/Convention Oven • Frigidaire Stainless Oven

**Master Stateroom** • Full Beam Master w/ Centerline King Size Bed • L-shaped Settee Banquette on the Port Side • 27" Magnavox LCD TV, JVC Stereo, Video Receivers • Birdseye

Maple Cabinetry • Double Cassette Player/CD Changer • Plush Carpeting • Large Walk-in Closet • Overhead Lighting • Side Vanity Shelve/ Seat • Sconce Lighting • Night Stands • Indirect Lighting • Ensuite Master • Privacy Door • Hanging Lockers on the Port and Starboard side

**Master Head** • Double Sinks w/ Vanity and Storage • Microphor Compressed Air Marine Toilet • Maple Privacy Door • Overhead Lighting • Marble Flooring • Full Storage Cabinets/Medicine Cabinets • Solid Surface Counter Top • Shower Stall • Towel Bars • Hand towel Bars • Soap Holders

### **Starboard VIP Stateroom**

• Starboard Side Stateroom w/ Head • Double Berth w/Maple Cabinetry • Hang-up Locker • Maple Wood Privacy Doors • Book/Storage Shelves • Corner Table w/Storage • Interphone • TV and DVD Player • Ensuite Head w/Shower Stall • Designer Bedspread and Pillows • Mirrored Headboard • Portlights • AC Control

### **Starboard VIP Head**

• Mirrored Wall • Shower Stalls • Privacy Doors • Toilet • Sink and counter top

### **Port VIP Stateroom**

• Starboard Side Stateroom w/ Head • Double Berth w/Maple Cabinetry • Hang-up Locker • Maple Wood Privacy Doors • Book/Storage Shelves • Corner Table w/Storage • Interphone • TV and DVD Player • Ensuite Head w/Shower Stall • Designer Bedspread and Pillows • Mirrored Headboard • Portlights • AC Control

### **Port VIP Head**

• Mirrored Wall • Shower Stalls • Privacy Doors • Toilet • Sink and counter top

### **Helm**

• Enclosed Sky lounge Bridge • Large Instrument Panel w/ full screens • Navigation Station w/ Keyboard • Stidd Companion Chair w/Arm and Foot Rest • Electronic Engine controls • Bow Truster Control • Stidd Helm Chair w/Arm and Foot Rest • Night bridge lighting • Windshield Wiper • Electric Opening Front Windshield • 2-Dell 17" Computer Monitors • 1- Big Bay 17" Radar Monitor • Niad Stabilizer Controls • Viacom Video Camera System Engine Room and Aft Deck • SeaTel Coastal 30 US & Caribbean • Trim Tab Controls • KVH Fleet 33 TracPhone • Furuno GPS Navigation Plotter • KVH Flexgate Electric Compass • Furuno FC582L Bottom Machine • Nobeltec 72 Mile Radar • Simrad AP25 Autopilot w/ Hand Held Remote • Standard Horizon GPS 170C • Icom VHF M520, Simrad RS87 VHF's • Raytheon ST60 TriData • EPIRB ACR 406 • Jabsco Remote Spotlight • Simrad RS87 VHF • SEA Hailer • Furuno FX30 Weatherfax • Seatel Coastal 30 • KVH Fleet 33 TracPhone interfaced Satellite System 25 • Color Viacom Video Camera System w/2 Cameras • Nobeltec Systems • Cell Phone Booster

### **Electrical System**



• 2, 21.5 KW Onan Generators w/Sound Shields • 2, 24V Charles 5000 Series Chargers • Heavy Duty Gel Cell Batteries 12 & 24 Volt • AC/DC Master Circuit Breaker Panels • Vapor-proof Battery Switches • Volt Meters • Shore Power "Y" Smart Box • Automatic Shore Chord Reel • Volt Meters • Isolation Transformer • Color Coded Wiring System • Telephone & Cable TV Inlets • 110 & 24 Volt Lighting Systems • Lazzara Custom Power Distribution Panels • Lazzara Custom Color Coated Wiring Harness • 40 Gal Hot Water Heater • Stackable Washer/Dryer • Head Hunter Marine Ozone Generator Odor Control System • Wesmar Electric Blow Thruster • Electronic Fluxgate Flush Mounted Compass

### **Mechanical Equipment**

• 24V Windlass w/ Remote, 300 feet of 1/2 Chain • 2-Concealed Davits located aft on the Bridge • Sea Recovery Aqua Wiper Watermaker 40GPH • Sea Recovery Oil/Water Separators • Dual Racor Fuel Filters • Fuel Priming Pumps for Main Engines and Generators - 24 Volt • Fuel Transfer Pumps • Rule and Ultra switch Bilge Pumps • Jabsco Spot Light w/Remote • Trumpet Compressed Air Horn • Glendinning Cable Master System • Holding Tank w/ Macerator • 8 Cruise air Air conditioners w/ Controls • Brownies Third Lung dive tank fill compressor system • Oil Transfer Pumps • Trim Tab System • 50 Gallon Fresh Oil Reservoir • Oil Change System

### **Aft Deck**

• Full Teak Deck • Port Side Steps to aft deck • Starboard side L-Lounge Settee w/Table/Storage • Two Individual deck Chairs w/ Pads • Stainless Steel Hand Rails • Boarding Gates • Teak Steps Port and Starboard • Ladder to the Bridge • Stainless Steel Safety Gate • Aft Deck Bar w/Sink/Refrigerator/ Corian Counter Top • Stainless Steel Sliding Glass Door to Salon • Ice maker • Camera • Port Side Lounge w/Table and Storage • Tinted Glass Overhead Lighting

**Cockpit** • Four Steps w/Teak Treads to Aft Deck • Two Blue Water Custom Teak Fighting Chairs • Transom Door and Gate Engine Room Access Large Cleats • Port Side Storage Cabinet • Starboard Storage Cabinet • Swim Platform • Two Fish Boxes w/ Pump Outs • Coaming Pads • Rod Holders • Marquipt Boarding Ladder

### **Additional Equipment**

• Bronze Spade Rudders • Niad Stabilizers Upgraded • 8 Man Zodiac Life Raft • TrimTab System • Nibral Bronze 4 Bladed • Bronze Thru Hull Fittings • Molded Swim Platform w/Transom Gate • Hardtop Enclosed Bridge • 2.75 Stainless Steel Shafts • 5 Underwater Lights • Engine room Camera • Engine room 240 Vin-line Blower System • ZF Transmissions • Work Bench • Fuel Polishing System • Fresh Water Wash Valve • Oil Change System • Rod Holders • Novurania Tender w/Yamaha 60hp Motor • Accoustical & Thermal Insulation • Tool Cabinets

---

## Исключения

---

При продаже яхты исключаются личные вещи владельца.

---

## Отказ от ответственности

---

Компания предоставляет описание судна или яхты добросовестно, но не может гарантировать точность этой информации, а также не ручается за техническое состояние. Покупатель должен проинструктировать своих агентов или оценщиков исследовать представленную информацию более подробно, по собственному желанию. Продажа судна или яхты, изменение цены или снятие с продажи будет происходить без предварительного уведомления.

# ФОТОГРАФИИ

**Main Salon**



**Main Salon**



**Main Salon Bar**



**Main Salon Settee**



**Galley**



**Galley**



**Galley**



**Day Head**



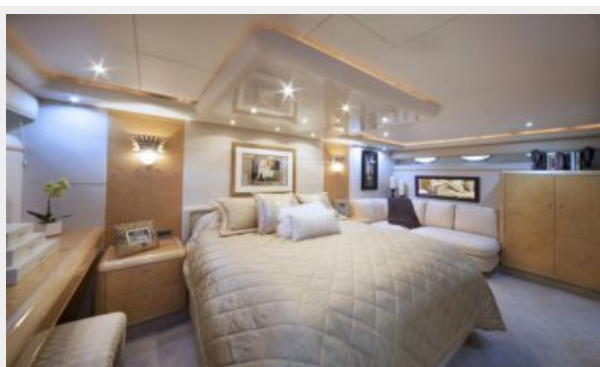
**Master Stateroom**



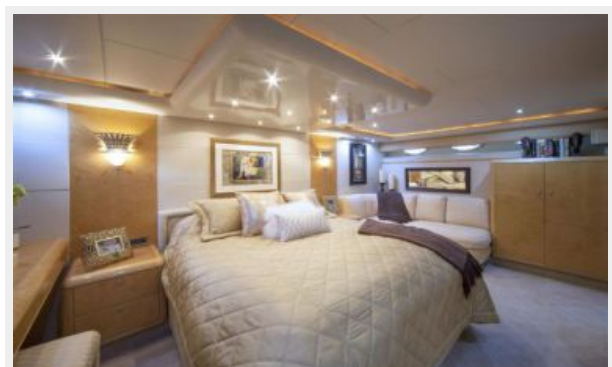
**Master Stateroom**



**Master Stateroom**



**Master Stateroom**



**Master Stateroom Head**



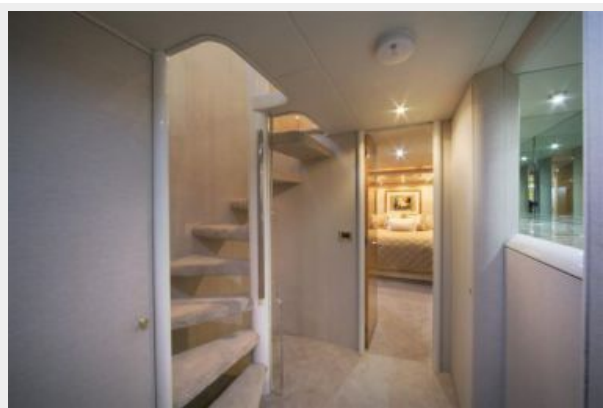
**Master Stateroom Closet**



**Washer/Dryer**



**Aft Foyer**





**Starboard VIP Stateroom**



**Port VIP Stateroom**



**VIP Head**



**Fwd Office**



**Fwd Head**



**Bow Stateroom**



**Fwd Stateroom**



**Bow Head**



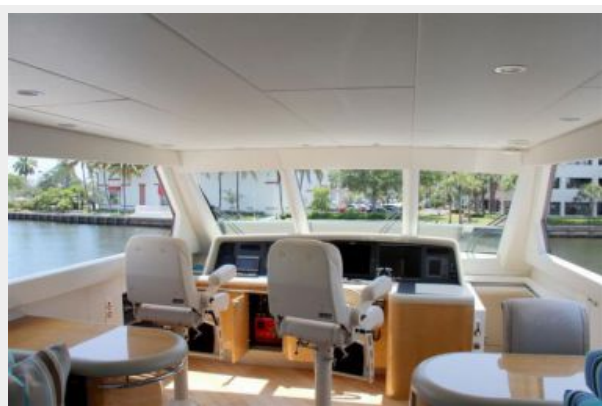
**Sky Lounge**



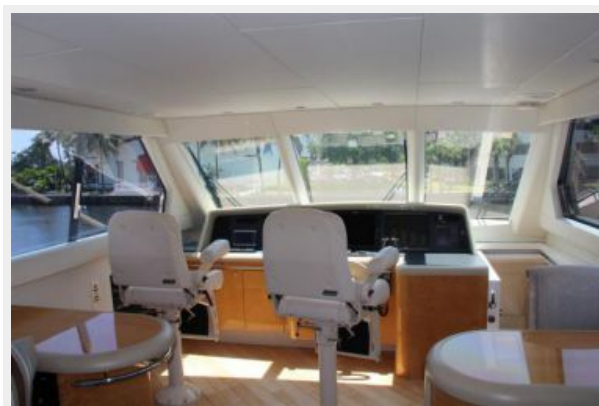
**Sky Lounge**



**Cabriolet Sky Lounge**



**Cabriolet Sky Lounge**





**Port Side Sky Lounge**



**Stbd Side Sky Lounge**



**Flybridge Freezer Box**



**Flybridge Seating**



**Engine room**



**Engine room**





**Engineerom**



**Engineerom**



**Cockpit**



**Aft Deck Bar**



**Logo**



# КОНТАКТЫ

---

Андрей Шестаков (Andrey Shestakov) – ведущий яхтенный брокер отдела продаж яхт и судов компании Shestakov Yacht Sales Inc. Официальный представитель Shestakov Yacht Sales Inc. для русскоговорящих клиентов в центральном офисе компании в Майами/Форт Лодердейл/Флорида/США.

## Контактная информация

---

Email: [andrey@shestakovyachtsales.com](mailto:andrey@shestakovyachtsales.com)

Web: [shestakovyachtsales.com](http://shestakovyachtsales.com)

## Телефоны

---

Краснодарский край: **+7(918)465-66-44**

США, Майами, Флорида: **+1(954)274-4435**

## Время работы

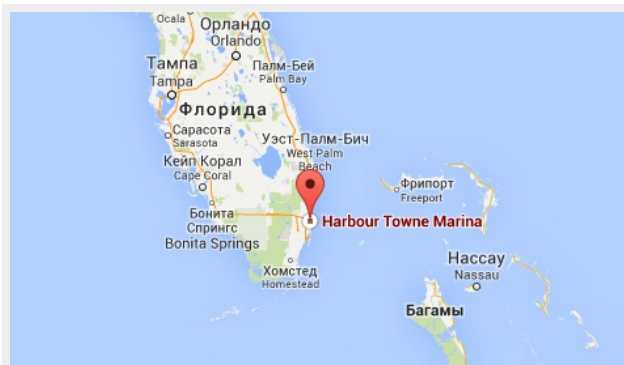
---

Понедельник – Суббота: **9:00 - 21:00**  
EDT

Воскресенье: **Закрито**

## Адрес

---



Harbour Towne Marina, 850 NE 3rd St,  
STE 213, Dania, FL 33004