

2002 SEA RAY — SEA RAY



Судостроитель: SEA RAY

Длина общая: 40' 0" (12.19m)

Год постройки: 2002

Модель: Крейсер

Цена: ЦЕНА ЯХТЫ ПО ЗАПРОСУ

Местонахождение: United States

Купить 2002 Sea Ray — SEA RAY а также выбрать подходящую вам яхту из нашего каталога яхт вам поможет опытный яхтенный брокер Андрей Шестаков. На сегодняшний день компания Shestakov Yacht Sales Inc. имеет большое количество яхт в собственном списке продаж, а также тесно сотрудничает со всеми крупными яхтенными производителями по всему миру.

Для того чтобы купить яхту 2002 Sea Ray — SEA RAY а также проконсультироваться по любому вопросу связанному с покупкой, продажей, чартером яхт позвоните по телефону **+7(918)465-66-44**.

ОГЛАВЛЕНИЕ

ОГЛАВЛЕНИЕ	2
ХАРАКТЕРИСТИКИ	5
Основная информация	5
Размеры	5
Размещение	5
Корпус и палуба	5
Информация о двигателе	5
ПОДРОБНОЕ ОПИСАНИЕ	6
Hull and Deck	6
Flybridge Helm Features	6
Navigation and Flybridge Helm	6
Cabin Features	6
Dining and Galley	7
Galley	7
Dinette	8
Master Stateroom and Head	8
Master Head Shower	8
Guest Room & Head	8
Port Stateroom	9
Navigation	9
Water System	9
Engines	9
Engine Room Equipment	10
Generator	10
Air Conditioning	10
Waste System	10
Electrical Systems	10
Cockpit Features	11

Windlass System	11
Underwater Gear	11
Исключения	12
Отказ от ответственности	12
ФОТОГРАФИИ	13
Stairs	13
Cockpit	13
Salon	13
Salon	13
Dinette	14
Salon	14
Salon	14
Galley	14
Galley	14
Stateroom	14
Guest Stateroom	15
Stateroom	15
Head	15
Head	15
VHF	15
VHF	15
Closet	16
Guages	16
Raytheon	16
Raytheon	16
Guages	17
Fuel Filters	17
Engine	17
Batteries	17

Exhaust	18
КОНТАКТЫ	19
Контактная информация	19
Телефоны	19
Время работы	19
Адрес	19

ХАРАКТЕРИСТИКИ

Основная информация

Тип судна: Крейсер

Модельный год: 2002

Год постройки: 2002

Страна: United States

Размеры

Длина общая: 40' 0" (12.19m)

Размещение

Всего кают: 2

Корпус и палуба

Материал корпуса: Fiberglass

Информация о двигателе

Производитель: Cummins

ПОДРОБНОЕ ОПИСАНИЕ

Hull and Deck

- Bow Rail, 316 Stainless Steel w/Welded Stanchions,
- Cleats, Custom Sea Ray Thru-Bolted - Stainless Steel (8)
- Deck Fill Plates, Stainless Steel
- Drain Plug, Brass-Threaded - Garboard
- Handrails, 316 Stainless Steel
- Portlights, Stainless Steel (4 Fixed, 4 Opening)
- Storage, Transom Wall - Fenders & Gear
- Swim Platform, Extended w/Concealed Stainless Steel
- Three-Step Swim Ladder w/Integral Grab Handle

Flybridge Helm Features

- Beverage Holders (3)
- Control Station (Located Starboard/Forward)
- Handrails, 316 Stainless Steel
- Lighting, Indirect
- Outlet, 12V Accessory
- Seating, Helm (2) - Custom Euro-Style w/Flip-Up
- Thigh-Rise Bolsters, Armrests & Heavy-Duty Pedestal
- w/Slides, Swivels & Pneumatic Vertical Adjustments
- Seating, U-Shaped - Aft
- Ship's Bell
- Sport Spoiler, Molded Fiberglass (Seamless)
- w/Overhead Lighting
- Steps, Molded Bridge Access
- Table, Bridge w/Sun Pad Filler Cushions

Navigation and Flybridge Helm

- The bridge plan with starboard helm station provides custom slide/swivel helm seats and a burl instrument panel with plenty of room for a full array of electronics.

Cabin Features

- Enter the salon through sliding glass doors. Immediately to port there's a comfortable sofa that converts to a bed with the push of a button, as well as a small table that does double

duty as a dining table or a convenient place to serve cocktails.

- Interior Finish - Hampton Cherry
- Lighting, 12V Halogen
- Lighting, 12V Indirect
- Miniblinds
- Outlet, 12V Accessory
- Outlets, Phone
- Polished Chrome Outlet & Switch Plates
- Stereo, 12V AM/FM Single CD w/6-Disc CD Changer,
- Amplifier, Subwoofer, Speakers (8), Digital Bridge Remote
- Control & Speaker Selector Switches
- Storage, In-Floor
- Vacuum System, Central - Dual Inlet
- Wood Trim, Handcrafted
- Seating, Loveseat
- Seating, Sofa w/Electrically Operated Slide-Out Bed
- Storage, Cabinets - Port & Starboard
- Table, Salon w/Dedicated Storage
- TV/VCR/Radio Combo, 13" w/Remote & Outlet for Antenna &
- TV Coax to Dockside
- Carbon Monoxide Monitors

Dining and Galley

- The galley is equipped with an upright refrigerator and freezer, flush-mount three-burner electric stove, microwave/convection oven, coffeemaker, custom-molded countertop and sink with single-lever faucet, and cutting board. The dinette booth seats up to four adults and has built-in storage in the seat bases.

Galley

- Coffeemaker, 120V (Spacemaker)
- Countertop, Molded Fiberglass w/Granite-Colored
- Gel-Coat, Sink, Single-Lever Grohe Faucet &
- Corian Sink Cover
- Flooring, Wood
- Handrail, Stainless Steel
- Lighting, Dual-Voltage - 120V/12V
- Microwave/Convection Oven, 120V
- Power Vent, 12V
- Refrigerator/Freezer, Upright - Dual-Voltage - 120V/12V
- Storage, Drawers w/Cutlery Insert

- Storage, Galley Pantry
- Storage, Upper & Lower w/Designated Glass & Bottle Storage
- Stove, 120V Flush-Mount Three-Burner
- w/Stainless Steel Safety Rail
- Trash Receptacle w/Chute & Corian Cover

Dinette

- Handrail, Stainless Steel
- Seating, Opposing w/Storage Below
- Table, Dinette (Folding Leaf) w/Corian Surface

Mater Stateroom and Head

- The forward stateroom has a full-size pedestal bed with innerspring mattress, pillows and a coordinated spread. Cedar-lined hanging lockers have lights and mirrored door and ensuite head.
- Bed, Full-Size w/Innerspring Mattress, Pillows, Sheets,
- Coordinated Spread & Drawers Below
- Privacy Door
- Hanging Lockers (2), Cedar-Lined w/Lights & Mirrored Doors
- Mirrored Rope Locker Bulkhead
- Storage, Gunwale Cabinets
- TV/VCR/Radio Combo, 13" w/Remote & Outlet for Antenna &
- TV Coax to Dockside

Master Head Shower

- Door, Privacy - Access from Forward Stateroom
- Head w/Fiberglass Settee Lid (VacuFlush)
- Power Vent, 12V
- Separate Shower w/Seat, Adjustable Shower Wand & Bifold Door
- Storage, Medicine Cabinet - Mirrored
- Vanity w/Sink, Grohe Faucet & Storage Below

Guest Room & Head

- The spacious interior offers a port stateroom with twin beds with innerspring mattresses that can be converted to a king-size bed. There's also a cedar-lined hanging locker with mirrored door and built-in storage.

Port Stateroom

- Beds, Twin (2) - w/Innerspring Mattresses, w/Filler Cushions to Convert into King-Size Bed
- Privacy Door
- Hanging Locker, Cedar-Lined w/Light & Mirrored Door
- Mirror, Wall Accent
- Storage, Cabinet & Drawers
- Guest Head/Shower:
- Privacy Door- Access from Hallway
- Handrail, Elliptical Stainless Steel
- Head w/Fiberglass Settee Lid (VacuFlush)
- Power Vent, 12V
- Shower w/Seat, Adjustable Shower Wand & Bifold Door
- Storage, Medicine Cabinet - Mirrored
- Vanity w/Sink, Faucet & Storage Below

Navigation

- Radar, RL80CRC - 10" Color LCD High Resolution
- Radar/Chartplotter w/4 kW Closed Dome
- GPS (Raymarine RayNav 300 GPS) w/WAAS Differential Sensor
- Multifunction Instrument (Raymarine Tridata ST-60)
 - - Depth Finder
 - - Speed/Sumlog
 - - Water Temperature
- VHF Radio (Raymarine 220) w/Remote Speaker &
- 8' Fiberglass Antenna
- Compass

Water System

- Freshwater Washdown Spigot - Transom
- Pressure Water System w/12V Pump
- Shower, Cockpit - Hot & Cold
- Water Heater, 120V (8.5-Gallon)
- Water Inlet, Dockside
- Water Tank (120-Gallon)

Engines

- T-Cummins 6CTA 8.3M with approx 421 hours (417hp each)

- Dual Racor Filters
- Fuel Lines, USCG - Type A-1
- Fuel Tanks, Aluminum w/Anti-Siphon Valves &
- Electric Sending Units (2)

Engine Room Equipment

- Bilge Pumps, 12V Automatic (3)
- Bilge Pumps, 12V Automatic High-Water (1 Bilge, 1 Cabin)
- Blowers, 12V Bilge (2)
- Engine Drip Sumps
- Patented Underwater Exhaust
- Fire Suppression System - Automatic w/Manual Pull
- Freshwater Cooling
- 2" Insulation w/Loaded Vinyl Barrier
- Lighting, 12V
- Oil Changer System, Engines & Generator

Generator

- 120V/60 Cycle
- 8.0 kW Westerbeke w/approx. 479 hours

Air Conditioning

- Zone-Controlled Reverse-Cycle System
- (28,000 BTU - 2.1-Ton)
- Custom Integral Vent System

Waste System

- Head System (VacuFlush)
- Holding Tank Level Indicators - MDP & Heads
- Holding Tank w/Dockside Pump-Out (40-Gallon)
- Sump Box w/Pumps

Electrical Systems

- Batteries (5) w/Trays & Switches (2)

- Battery Charger/Converter, 120V/40 Amp/12V
- Electronics Circuit w/Ground Plate, 50 Amp/12V
- Inlet, TV Coax & Telephone w/Cords
- Isolators, Galvanic (2)
- Panel, DC Main Breaker
- Panel, Main Distribution - AC
- Panel, Main Distribution - DC
- Panel, Remote Circuit Breaker
- Shore Power, Dual 30 Amp/120V/60 Cycle w/50' Cords & Adapters
- Wiring, Color-Coded w/Chafe Protection

Cockpit Features

- Door, Cabin Entry (Sliding & Lockable) w/Screen
- Door, Transom
- Floor Liner, Fiberglass - Self-Bailing
- Hatch, Engine Service - Gas-Assisted
- Ice maker, 120V
- Lighting, Indirect
- Outlet, 120V GFI Protected
- Rod Holders (2)
- Seating, Aft Bench w/Storage Below
- Steps, Molded Deck Access
- Storage, Side Panels

Windlass System

- Anchor Chute, Stainless Steel
- Anchor Rope/Chain Storage w/Hatch
- Anchor Washdown Spigot w/Hose
- Windlass, Rope/Chain w/Foot Switches (Lofrans Progress I)

Underwater Gear

- Bonding System w/Zinc Hull Plate
- Propeller Shafts, 1 3/4" Stainless Steel (2) - Aquamet 22 (Diesel)
- Propellers, Nibral 4-Blade Cup
- Rudders - Manganese-Bronze w/Stainless Steel Posts
- Seacocks on all Underwater Fittings
- Seawater Strainers
- Shaft Logs, Dripless w/Extra Seal Carrier Kit

- Struts - Manganese-Bronze
- Trim Tabs, Hydraulic

Исключения

При продаже яхты исключаются личные вещи владельца.

Отказ от ответственности

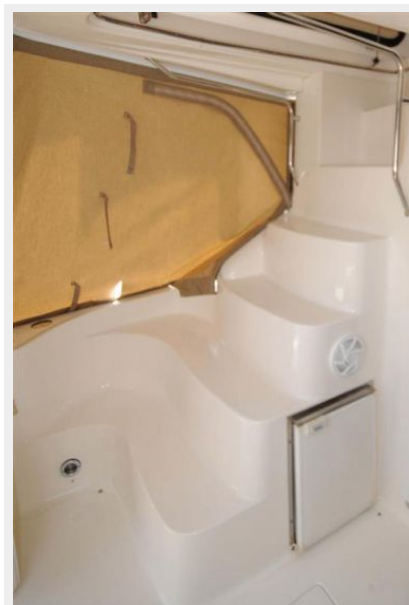
Компания предоставляет описание судна или яхты добросовестно, но не может гарантировать точность этой информации, а также не ручается за техническое состояние. Покупатель должен проинструктировать своих агентов или оценщиков исследовать представленную информацию более подробно, по собственному желанию. Продажа судна или яхты, изменение цены или снятие с продажи будет происходить без предварительного уведомления.

ФОТОГРАФИИ

Сокпит



Stairs



Salon



Salon



Salon



Dinette



Salon



Galley



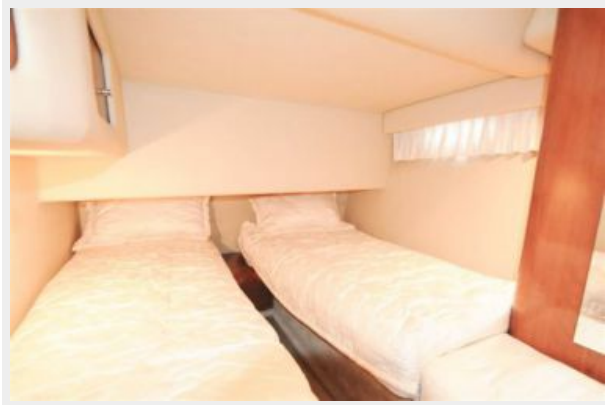
Galley



Stateroom



Guest Stateroom



Stateroom



Head



Head



VHF



VHF



Closet



Guages



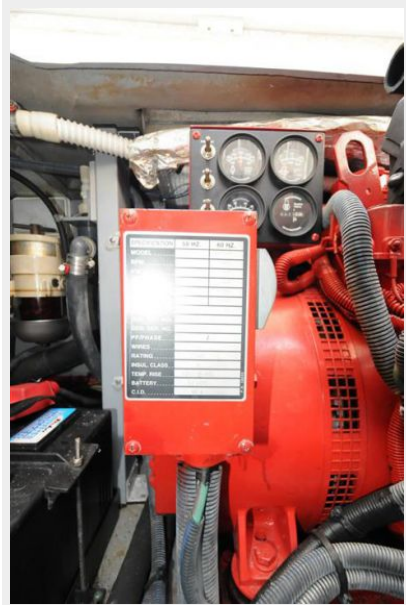
Raytheon



Raytheon



Guages



Fuel Filters



Engine



Batteries



Exhaust



КОНТАКТЫ

Андрей Шестаков (Andrey Shestakov) – ведущий яхтенный брокер отдела продаж яхт и судов компании Shestakov Yacht Sales Inc. Официальный представитель Shestakov Yacht Sales Inc. для русскоговорящих клиентов в центральном офисе компании в Майами/Форт Лодердейл/Флорида/США.

Контактная информация

Email: andrey@shestakovyachtsales.com

Web: shestakovyachtsales.com

Телефоны

Краснодарский край: **+7(918)465-66-44**

США, Майами, Флорида: **+1(954)274-4435**

Время работы

Понедельник – Суббота: **9:00 - 21:00**
EDT

Воскресенье: **Закрито**

Адрес



Harbour Towne Marina, 850 NE 3rd St,
STE 213, Dania, FL 33004