

NO NAME — #1 HULL



Builder: #1 HULL

Year Built: 1976

Model: Sport Fisherman

Price: PRICE ON APPLICATION

Location: United States

LOA: 53' 0" (16.15m)

Min Draft: 3' 6" (1.07m)

Cruise Speed: 17 Kts. (20 MPH)

Our experienced yacht broker, Andrey Shestakov, will help you choose and buy a yacht that best suits your needs **No Name — #1 HULL** from our catalogue. Presently, at Shestakov Yacht Sales Inc., we have a wide variety of yachts available on our sale's list. We also work in close contact with all the big yacht manufacturers from all over the world.

If you would like to buy a yacht **No Name — #1 HULL** or would like help answering any questions concerning purchasing, selling or chartering a yacht, please call **+1(954)274-4435**

TABLE OF CONTENTS

TABLE OF CONTENTS	2
SPECIFICATIONS	3
Overview	3
Basic Information	3
Dimensions	3
Speed, Capacities and Weight	3
Accommodations	4
Hull and Deck Information	4
Engine Information	4
DETAILED INFORMATION	5
Accommodations	5
Aft Deck	5
Audio & Visual Equipment	5
Galley	5
Electronics	5
Electrical Equipment	6
Deck Equipment	6
Mechanical	6
Fishing Equipment	6
Exclusions	6
Disclaimer	6
PHOTOS	7
CONTACTS	14
Contact details	14
Telephones	14
Office hours	14
Address	14

SPECIFICATIONS

Overview

50' Key West #1 Hull Sport Fish, twin Detroit 671's (485hp each) flybridge with tuna tower, 15 KW Westerbeke generator, two staterooms, one head/shower. This boat was originally designed and custom built by the owner of Key West #1 Boat Manufacturing as his personal boat. Current owner is motivated to sell and looking for offers.

Basic Information

Category: Sport Fisherman

Sub Category: Convertible

Model Year: 1976

Year Built: 1976

Country: United States

Vessel Top: Full / Tuna Tower

Fly Bridge: Yes

Cockpit: Yes

Dimensions

LOA: 53' 0" (16.15m)

LWL: 50' 0" (15.24m)

LOD: 45' 0" (13.72m)

Min Draft: 3' 6" (1.07m)

MFG Length: 50' 0" (15.24m)

Speed, Capacities and Weight

Cruise Speed: 17 Kts. (20 MPH)

Cruise Speed RPM: 2200 Kts.

Water Capacity: 150 Gallons

Fuel Capacity: 560 Gallons

Accommodations

Total Cabins: 2

Total Berths: 4

Sleeps: 6

Total Heads: 1

Hull and Deck Information

Hull Material: Fiberglass

Deck Material: Fiberglass

Hull Configuration: Planing

Hull Color: White

Engine Information

Engines: 2

Manufacturer: Detroit Diesel

Model: 671

Engine Type: Inboard

Fuel Type: Diesel

DETAILED INFORMATION

Accommodations

Boarding is accomplished by stepping onto the wide gunwale and onto the extremely large fiberglass self draining aft deck which has a custom center fighting chair surrounded by four deck chairs. Access to the main salon is gained via port or starboard doors, salon has a wood parquet covered fiberglass deck, galley (refrigerator/freezer, sink, microwave, chest freezer) to port, in center of salon is another chest freezer, chart table, storage cabinets/drawers, L-shaped seating (makes into double berth) along with additional seating to starboard. A forward center stairwell leads down to the crew bunks (2) to port, head/shower/sink to starboard, and master stateroom (V-berth) forward. Access to the engine room is made by lifting the stairs up, leads into a very large engine room. All wiring and components are labeled. Back out on the aft the flybridge is accessed by climbing up the tuna tower. The flybridge has a full helm with two overhead electronics boxes. There is 360 degrees of visibility at this helm. Climbing further up the tuna tower brings you to the upper operational helm station for outstanding visibility. This particular hull was originally designed and built for the owner of Key West #1 Boat Manufacturing as his private fishing boat. Current owner wants to sell the boat as he is retiring from charter fishing, fishing equipment (rods/reels, tackle) is not included in the purchase price however can be negotiated.

Aft Deck

Extremely large aft fishing deck Custom Fighting Chair 4 - custom deck chairs In-deck livewell
Self draining cockpit

Audio & Visual Equipment

Live on board cameras with viewing TV AM/FM stereo with speakers

Galley

Galley Up 4 burner stove Refrigerator 2-chest freezers Microwave Sink Plenty of storage and cabinets/drawers

Electronics

Garmin 4208 multi-display Depth sounder GPS/Chart Plotter 2-Uniden VHF radios

Electrical Equipment

Westerbeke 15KW generator 2-Battery chargers 2-Inverters 8-8D batteries Shore Power Cable

Deck Equipment

Plow Anchor Danforth Anchor 300 feet line Bow Pulpit with rails Fiberglass aft cockpit deck Wood Parquet flooring over fiberglass deck in salon and staterooms Fresh/Salt water wash downs Search light Spreader lights

Mechanical

Carrier roof air conditioner 2-Marine Air, air conditioners 5-bilge pumps Emergency engine shut downs Engine alarms Tuna tower helm and flybridge helm stations Racor fuel/water filters Fuel shut off valves Engine & generator oil transfer system Sea strainers Hydraulic steering

Fishing Equipment

In deck live well 40' Rupp triple spreader outriggers Fighting Chair All other fishing tackle, rods/reels, etc not included in sale but negotiable

Exclusions

Owner's personal belongings.

Disclaimer

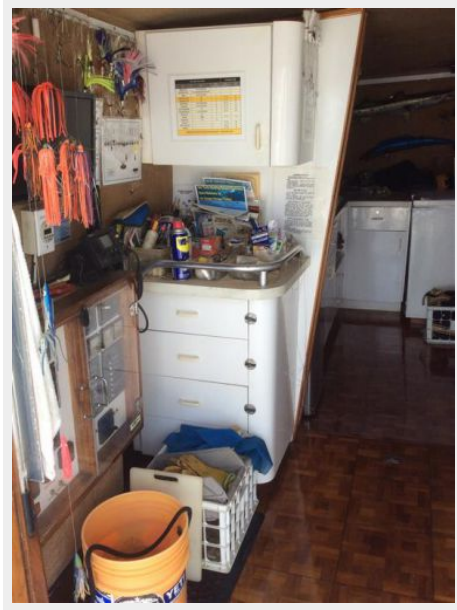
The Company offers the details of this vessel or yacht in good faith but cannot guarantee or warrant the accuracy of this information nor warrant the condition of the vessel. A buyer should instruct his representatives, agents, or his surveyors, to investigate such details as the buyer desires validated. This vessel or yacht is offered subject to prior sale, price change, or withdrawal without notice.

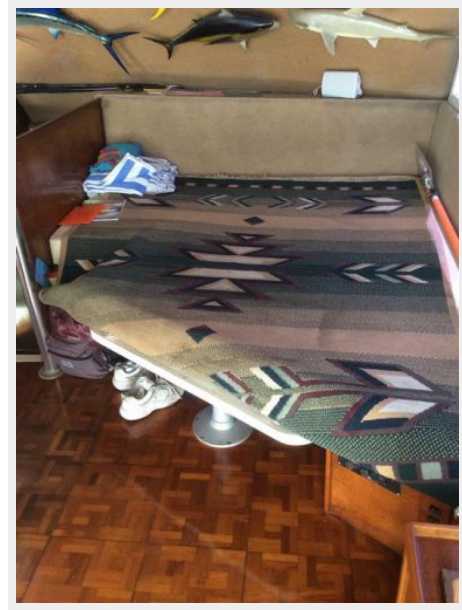
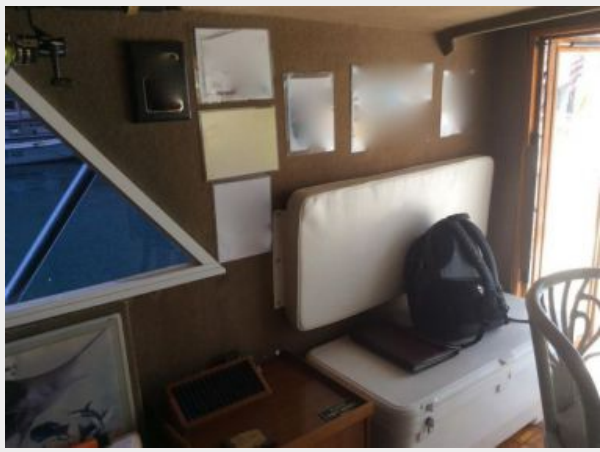
PHOTOS

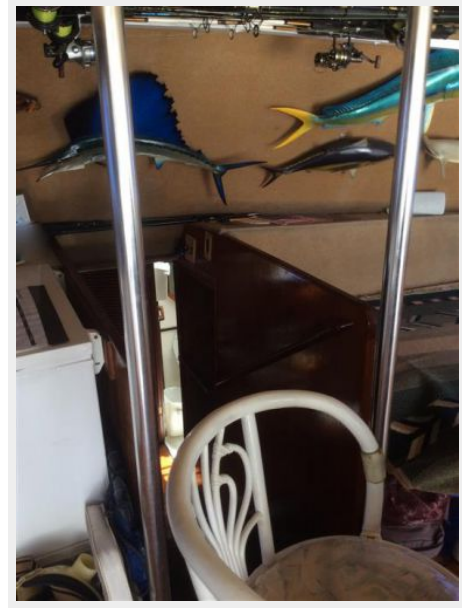


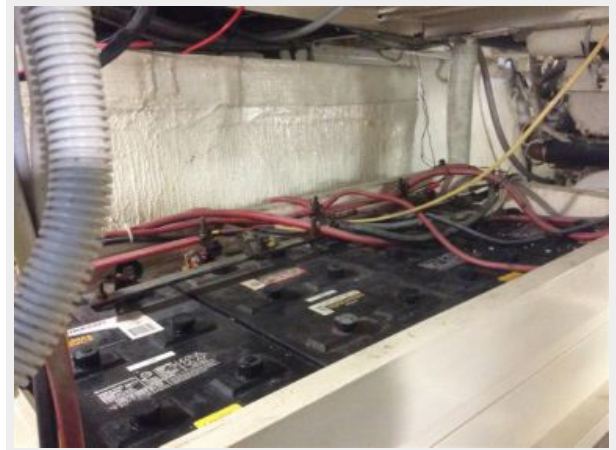












CONTACTS

Andrey Shestakov, leading yacht broker of the sales department of Shestakov Yacht Sales Inc. Shestakov Yacht Sales Inc., the official representative of the Miami/Fort Lauderdale FL headquarters.

Contact details

Email: andrey@shestakovyachtsales.com

Web: shestakovyachtsales.com/en/

Telephones

USA: +1(954)274-4435

Office hours

Monday – Saturday: **9:00 - 21:00** EDT

Sunday: **closed**

Address



Harbour Towne Marina, 850 NE 3rd St,
STE 213, Dania, FL 33004