

THE BIG BLUE — TROY-MARINE



Builder: TROY-MARINE

Year Built: 2009

Model: expedition yacht

Price: PRICE ON APPLICATION

Location: Virgin Islands (British)

LOA: 137' 10" (42.01mm)

Beam: 27.58

Min Draft: 8' (2.44mm)

Max Draft: 8' 6" (2.59mm)

Cruise Speed: 11 Knots Kts. (13 MPH)

Max Speed: 13 Knots Kts. (15 MPH)

Our experienced yacht broker, Andrey Shestakov, will help you choose and buy a yacht that best suits your needs **THE BIG BLUE — TROY-MARINE** from our catalogue. Presently, at Shestakov Yacht Sales Inc., we have a wide variety of yachts available on our sale's list. We also work in close contact with all the big yacht manufacturers from all over the world.

If you would like to buy a yacht **THE BIG BLUE — TROY-MARINE** or would like help answering any questions concerning purchasing, selling or chartering a yacht, please call **+1(954)274-4435**

TABLE OF CONTENTS

TABLE OF CONTENTS	2
SPECIFICATIONS	4
Overview	4
Basic Information	4
Dimensions	4
Speed, Capacities and Weight	5
Accommodations	5
Hull and Deck Information	5
Engine Information	5
PHOTOS	6
IMG_4966	13
TBB5	14
TBB10	14
TBB11	14
TBB12	14
TBB13	15
TBB14	15
TBB15	15
TBB16	15
TBB17	16
TBB18	16
TBB19	16
TBB23	16
TBB24	17
TBB25	17
TBB26	17
TBB27	17
TBB28	18

TBB29	18
TBB3	18
TBB4	18
TBB5	19
TBB6	19
TBB7	19
TBB8	19
TBB9	20
Main Salon 3 Edited	20
CONTACTS	21
Contact details	21
Telephones	21
Office hours	21
Address	21

SPECIFICATIONS

Overview

Proven long range expedition yacht with helicopter deck, zero-speed stabilizers, knuckle boom crane, Z-lift swim platform, Nitrox, redundant systems, excellent electronics, expansive exterior and side decks, Luiz DeBasto interior. Major refit completed at Derecktor Shipyard in 2013 to include new generators, deck modifications, upgraded systems, wiring, piping, interior, and outfitting for a world cruise. Class: BUREAU VERITAS, YACHT - MOTOR - S, Maltese Cross, Hull and Machinery. Flag: Marshall Islands Extensive maintenance and upgrades performed at Rybovich Shipyard 2016-2017. Five Year Bureau Veritas Survey and annual RMI survey completed December 2017. Generator 1 fully overhauled January 2018 Generator 2 full overhaul Feb. 2018. Full hull bottom sweep with all new coating system, April 2019 Propspeed and new zincs, April 2019 Stabilizers: full service including shaft removal and new seals, April 2019 Bow thruster serviced with new seals, April 2019

Basic Information

Category: expedition yacht

Sub Category: Expedition/Explorer

Model Year: 2010

Year Built: 2009

Refit Type: Machinery, Interior, Heli-deck, systems and electronics upgrades.

Country: Virgin Islands (British)

Dimensions

LOA: 137' 10" (42.01mm)

LWL: 122' (37.19mm)

Beam: 27.58

Min Draft: 8' (2.44mm)

Max Draft: 8' 6" (2.59mm)

Speed, Capacities and Weight

Cruise Speed: 11 Knots Kts. (13 MPH)

Cruise Speed Range: 4300

Max Speed: 13 Knots Kts. (15 MPH)

Gross Tonnage: 399 Pounds

Water Capacity: 5019 Gallons

Holding Tank: 1453 Gal Gallons

Fuel Capacity: 15586 Gal Gallons

Accommodations

Total Cabins: 5

Total Berths: 9

Sleeps: 12

Total Heads: 8

Crew Cabin: 8

Crew Berths: 7

Crew Heads: 4

Hull and Deck Information

Hull Material: Steel

Deck Material: Teak

Hull Configuration: Displacement w/
Bulbous Bow

Hull Color: Blue

Hull Designer: TROY MARINE

Interior Designer: Luiz DeBasto Design

Engine Information

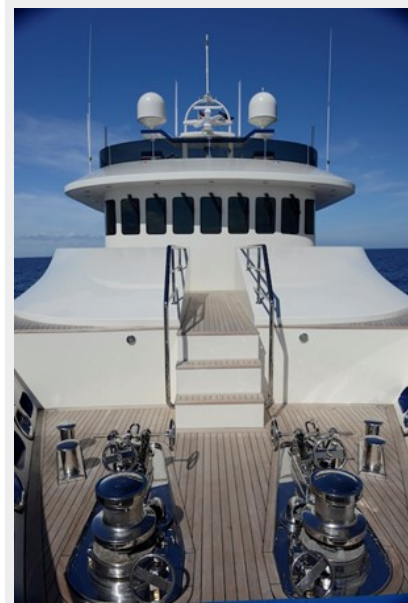
Engines: 2

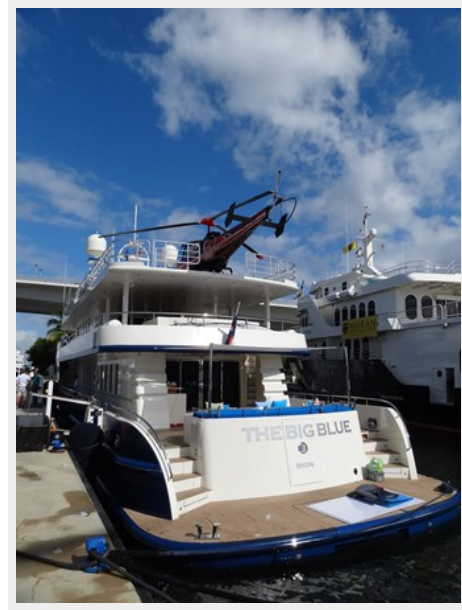
Manufacturer: Volvo

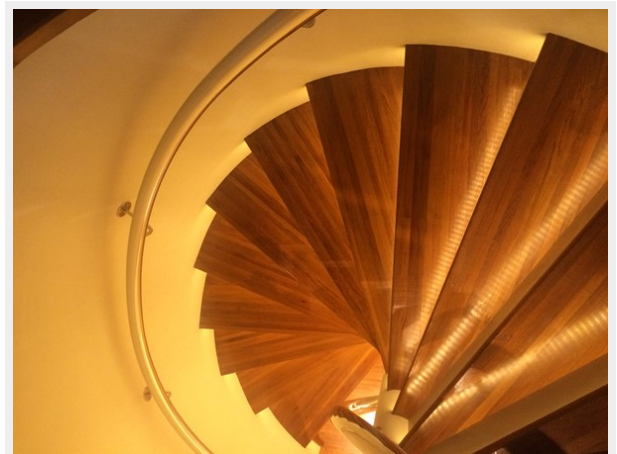
Engine Type: Inboard

Fuel Type: Diesel

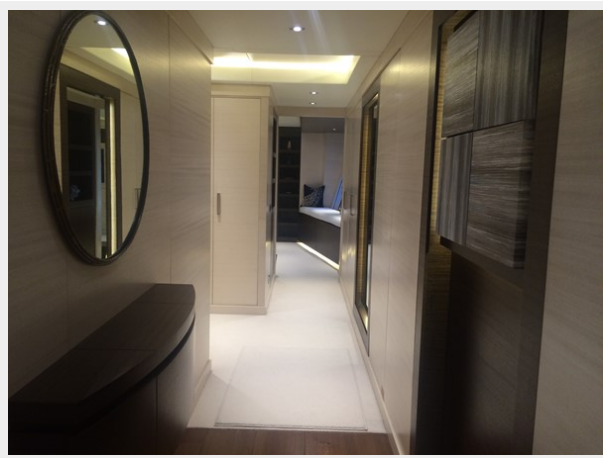
PHOTOS

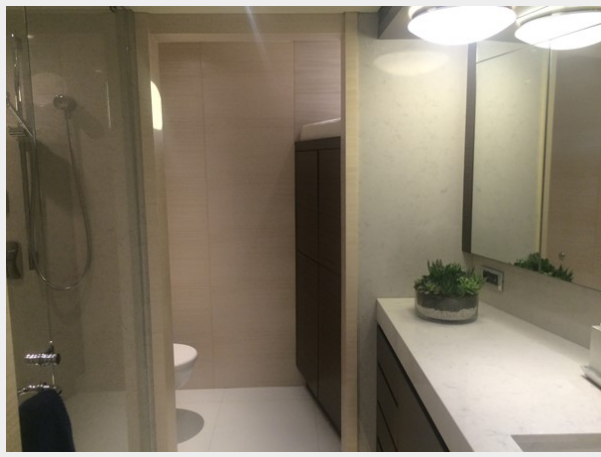


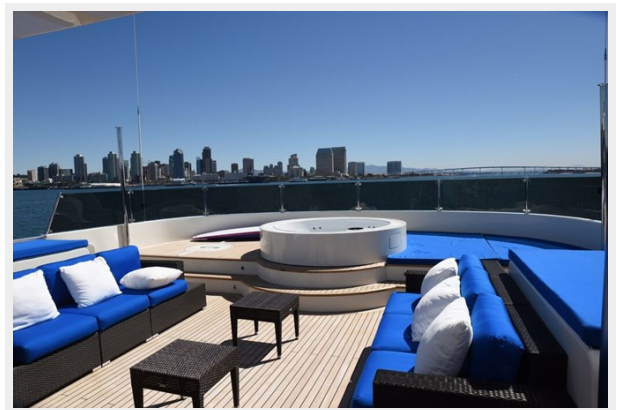










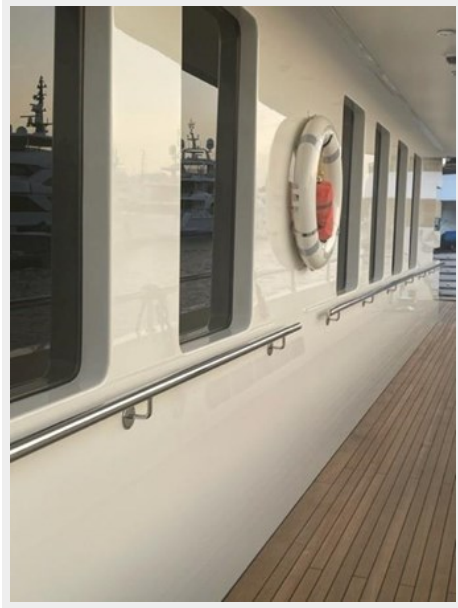




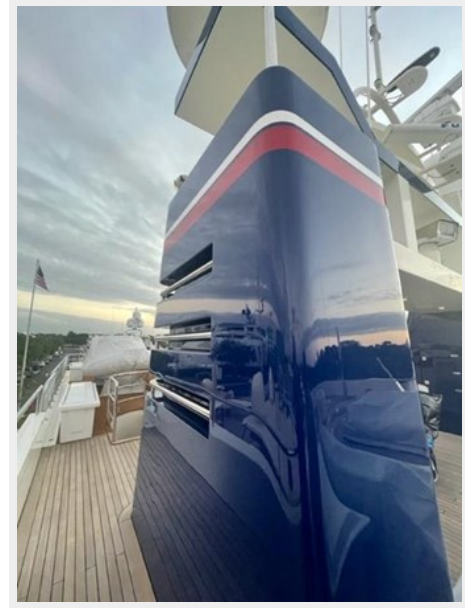
IMG_4966



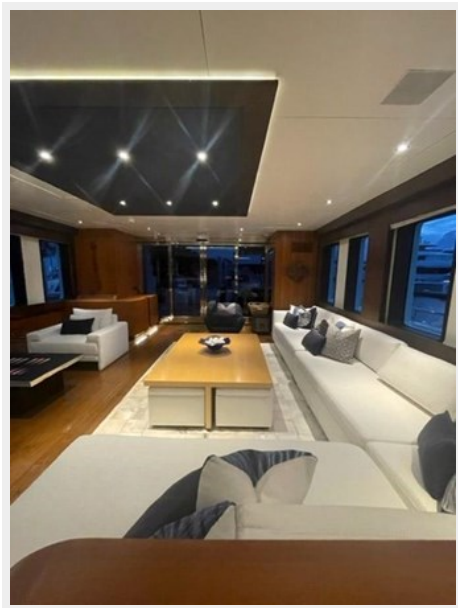
TBB5



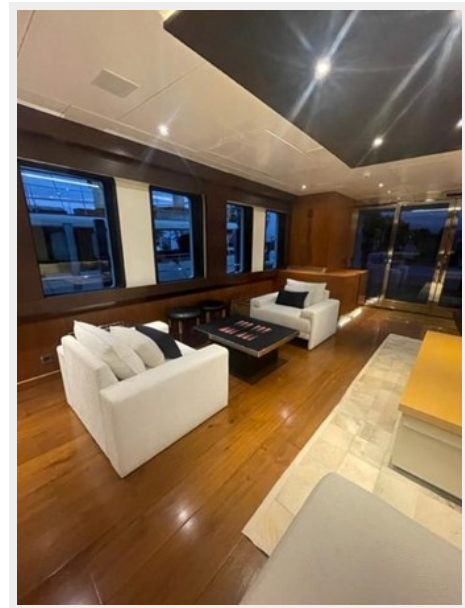
TBB10



TBB11



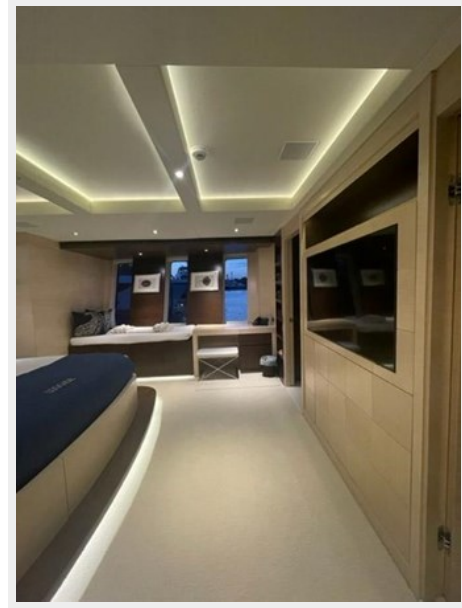
TBB12



TBB13



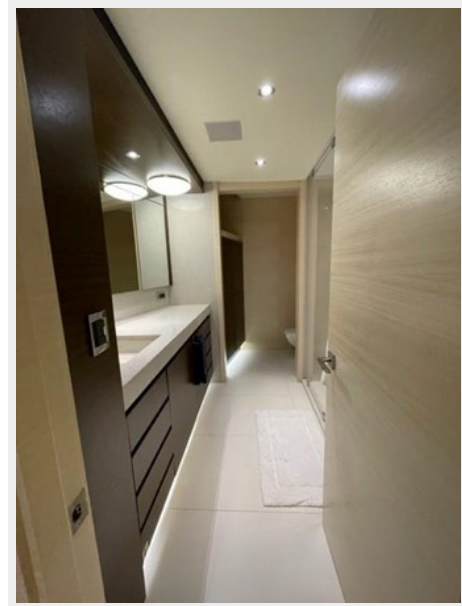
TBB14



TBB15



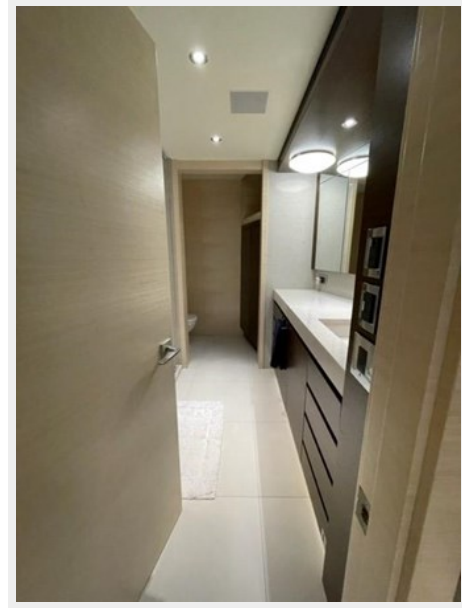
TBB16



TBB17



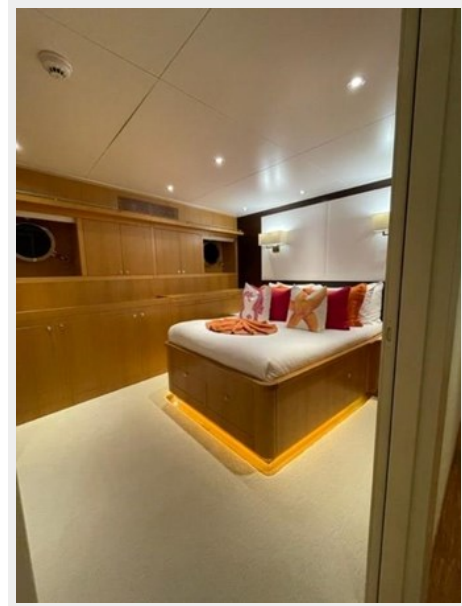
TBB18



TBB19



TBB23



TBB24



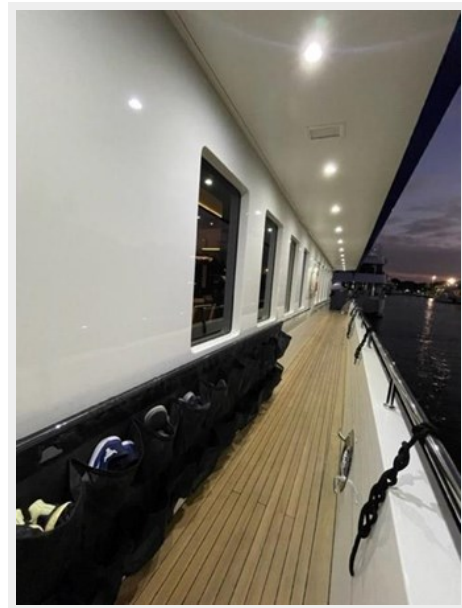
TBB25



TBB26



TBB27



TBB28



TBB29



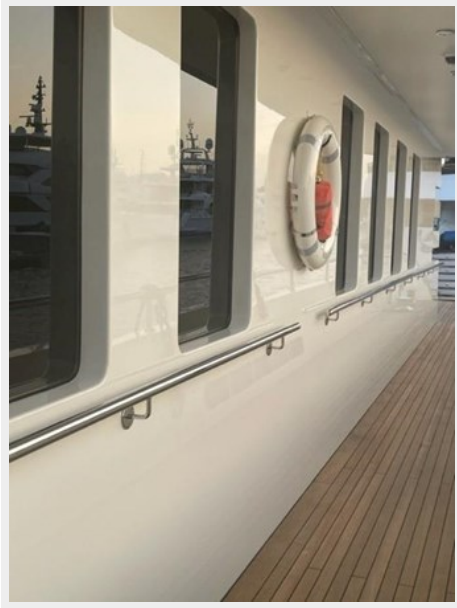
TBB3



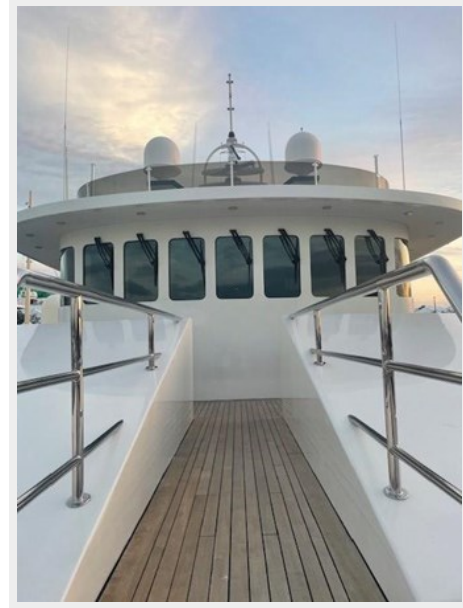
TBB4



TBB5



TBB6



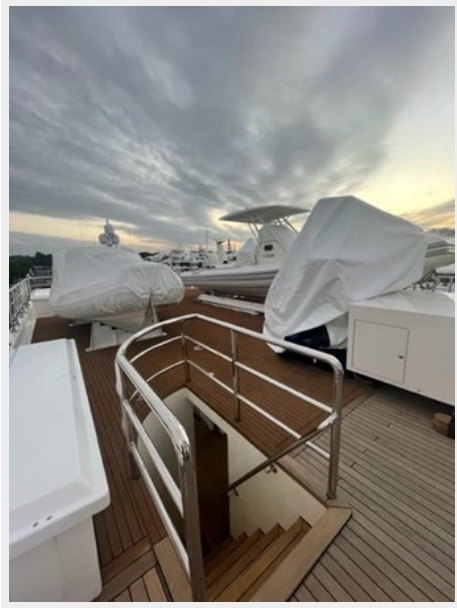
TBB7



TBB8



TBB9



Main Salon 3 Edited



CONTACTS

Andrey Shestakov, leading yacht broker of the sales department of Shestakov Yacht Sales Inc. Shestakov Yacht Sales Inc., the official representative of the Miami/Fort Lauderdale FL headquarters.

Contact details

Email: andrey@shestakovyachtsales.com

Web: shestakovyachtsales.com/en/

Telephones

USA: +1(954)274-4435

Office hours

Monday – Saturday: **9:00 - 21:00** EDT

Sunday: **closed**

Address



Harbour Towne Marina, 850 NE 3rd St,
STE 213, Dania, FL 33004