

NO NAME — CARVER



Builder: CARVER

Year Built: 2000

Model: Motor Yacht

Price: PRICE ON APPLICATION

Location: United States

LOA: 40' 0" (12.19m)

Beam: 13' 3" (4.04m)

Max Draft: 3' 3" (0.99m)

Our experienced yacht broker, Andrey Shestakov, will help you choose and buy a yacht that best suits your needs **No Name — CARVER** from our catalogue. Presently, at Shestakov Yacht Sales Inc., we have a wide variety of yachts available on our sale's list. We also work in close contact with all the big yacht manufacturers from all over the world.

If you would like to buy a yacht **No Name — CARVER** or would like help answering any questions concerning purchasing, selling or chartering a yacht, please call **+1(954)274-4435**

TABLE OF CONTENTS

TABLE OF CONTENTS	2
SPECIFICATIONS	6
Overview	6
Basic Information	6
Dimensions	6
Speed, Capacities and Weight	7
Accommodations	7
Hull and Deck Information	7
Engine Information	7
DETAILED INFORMATION	8
Salon	8
Galley	8
Master Stateroom	8
Master Head	8
Guest Stateroom	9
Guest Head	9
Helm	9
Electronics	9
Electrical System	10
Engine Room	10
Flybridge	10
Aft Deck	10
Cockpit	10
Decks	11
Exclusions	11
Broker's Remarks	11
Exclusions	11
Disclaimer	11

PHOTOS	12
Salon	12
Salon	12
Salon	12
Salon	12
Salon Incliners	12
Aft Salon	12
Full Size Refrigerator	13
Galley	13
Oven	13
Dinette	13
Master Stateroom	14
Master Stateroom	14
Master Stateroom Access to Cockpit	14
Master Head	14
Master Separate Shower	15
Forward Stateroom	15
Forward Head	15
Cabin Door Entry	15
Helm	16
Helm and Autopilot	16
Helm Chairs	16
Autopilot	16
Bridge Access	16
Forward Bridge Seating	16
Wet Bar	17
Aft Deck	17
Aft Deck with Canvas	17
Aft Deck	17

Cockpit	18
Cockpit	18
Cockpit	18
Engine Room 1	18
Engine Room 2	19
Engine Room 3	19
Forward Deck	19
Forward Deck from Starboard Side	19
Port Walkway	20
Wide Walkway	20
New Bottom Job 1	20
New Bottom Job 2	20
New Bottom Job 3	20
At Dock	20
Underway	21
Port Profile	21
Port Aft Quarter	21
Port Forward Quarter	21
Starboard Forward Quarter	21
Starboard Profile	21
Bow	22
Starboard Aft Quarter	22
Stern	22
Factory Running Shot	22
Layout	22
CONTACTS	23
Contact details	23
Telephones	23
Office hours	23

Address

23

SPECIFICATIONS

Overview

This Diesel 404 Carver Cockpit Motor Yacht offers a market proven mix of novel features and comfortable accommodations. She has been exceedingly well maintained and just received a new complete bottom job and complete engine services (July-2014). This desirable design offers a well-planned out interior featuring two private staterooms with their own private enclosed heads and vanities. The salon is remarkably spacious and open, featuring an L-shaped lounge with incliners, a bucket chair and entertainment center. A roomy galley includes many appointments you may only find in your home such as a real oven. Opposite is the full size dinette which seats six and converts to a sizable sleeping area. The master stateroom is aft and has a large sliding glass door that opens up to the aft cockpit (your own private balcony). It features a queen berth and a separate shower stall in the head. Aside from the versatility that cockpits offer they make great diving or fishing platforms and boarding is a lot less of a hassle. The extra waterline length actually adds a knot or two to the speed while improving the boat's overall profile and handling characteristics. Notable features include an over sized swim platform, a huge upgraded transom storage locker, an expansive cockpit, extra wide side decks and a unique spiral staircase from cockpit to the aft deck. The entertainment ready aft deck includes a wet bar and ice maker with room for six deck chairs. Her flybridge has seating for 8 with a great view. The upgraded 370 HP turbo Cummins diesels will cruise comfortably at 22 knots (27 wide open). Call for your easy showing today, you won't be disappointed!

Basic Information

Category: Motor Yacht

Sub Category: Cockpit

Model Year: 2000

Year Built: 2000

Country: United States

Cockpit: Yes

Dimensions

LOA: 40' 0" (12.19m)

Beam: 13' 3" (4.04m)

Max Draft: 3' 3" (0.99m)

Clearance: 17' 6" (5.33m)

Speed, Capacities and Weight

Displacement: 25600 Pounds

Water Capacity: 81 Gallons

Holding Tank: 36 Gallons

Fuel Capacity: 318 Gallons

Accommodations

Total Cabins: 2

Total Heads: 2

Hull and Deck Information

Hull Material: Fiberglass

Hull Color: White

Hull Designer: Carver

Engine Information

Engines: 2

Manufacturer: Cummins

Model: 370 B

Engine Type: Inboard

Fuel Type: Diesel

DETAILED INFORMATION

Salon

- Sofa w/incliners
- Tub chair
- TV/DVD
- 6 Disc CD changer
- Air conditioning/heat
- Blinds
- Seating for 6
- Light maple interior

Galley

- Dinette table seats 6
- 3-burner electric stove with Oven
- Large refrigerator with freezer
- Microwave
- Coffee maker
- Solid surface counter tops
- Hot and cold pressure water
- Great storage above and below
- 110 volt outlet
- 12 volt lighting

Master Stateroom

- Queen size berth
- TV/DVD
- Cedar lined closet storage
- Air conditioning/heat
- 110 volt outlet
- 12 volt lighting
- Sliding glass door to cockpit

Master Head

- Vacuflush head
- Separate shower stall

- Storage under sink
- Mirror
- Tank monitor
- Blinds
- Exhaust fan
- 110 volt outlet

Guest Stateroom

- Sleeps two
- Closet storage
- Drawer storage
- Air conditioning/heat

Guest Head

- Vacuflush head
- Shower with door
- Tank monitor
- Storage
- Exhaust fan
- 110 volt outlet

Helm

- Fuel gauges
- Oil - temperature - volt gauges
- Stereo with remote
- Spotlight with remote
- Fuel crossover switch
- Compass
- Destroyer style steering wheel

Electronics

- Furuno radar with open array
- Furuno chartplotter
- Hummingbird depth finder
- Standard Horizon VHF
- Trim tabs

- Raymarine 6001 Autopilot- Updated

Electrical System

- Westerbeke 7 KW generator – 900 hours
- Battery charger
- (6) marine batteries - New 3/14
- Shore power with 2 cords and splitter (50 amp) - New 6/14

Engine Room

- Fire suppression system
- Water strainers
- Air conditioner pump
- Fuel switch cross over - switch at bridge

Flybridge

- Enclosure with zipped out eyebrows
- Arch
- Seating for 8
- Carpeting - updated

Aft Deck

- Hard top with enclosure
- Carpeting
- Ice maker
- Wet bar
- Wing doors

Cockpit

- Private sliding glass door entry to master stateroom
- Walk through transom door
- Wash down
- Shore water hookup
- Steps to aft deck

Decks

- Anchor and chain
- Windlass with remote
- Hot and cold transom shower
- Swim platform with with 4 step ladder
- Large upgraded storage box
- Remote Spotlight

Exclusions

- Owners personal items

Broker's Remarks

- Exceptional value for a diesel vessel of this size and caliber
- Fresh bottom job in June of 2014
- Complete engine services in June of 2014
- New A/C for the salon and forward stateroom 10/14

Exclusions

Owner's personal belongings.

Disclaimer

The Company offers the details of this vessel or yacht in good faith but cannot guarantee or warrant the accuracy of this information nor warrant the condition of the vessel. A buyer should instruct his representatives, agents, or his surveyors, to investigate such details as the buyer desires validated. This vessel or yacht is offered subject to prior sale, price change, or withdrawal without notice.

PHOTOS

Salon



Salon



Salon



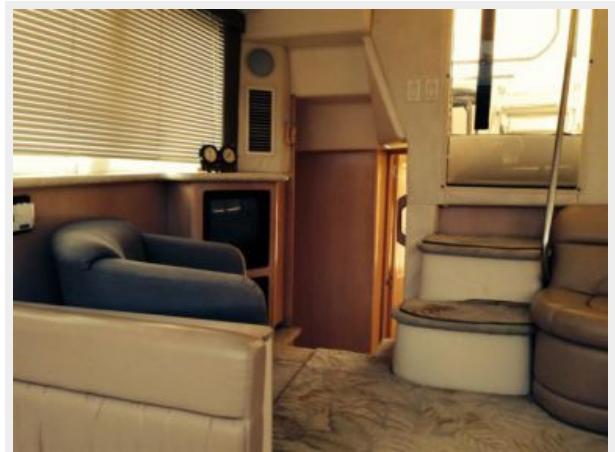
Salon



Salon Incliners



Aft Salon



Galley



Full Size Refrigerator



Oven



Dinette



Master Stateroom



Master Stateroom



Master Stateroom Access to Cockpit



Master Head



Master Separate Shower



Forward Stateroom



Forward Head



Cabin Door Entry



Helm



Helm and Autopilot



Helm Chairs



Autopilot



Bridge Access



Forward Bridge Seating



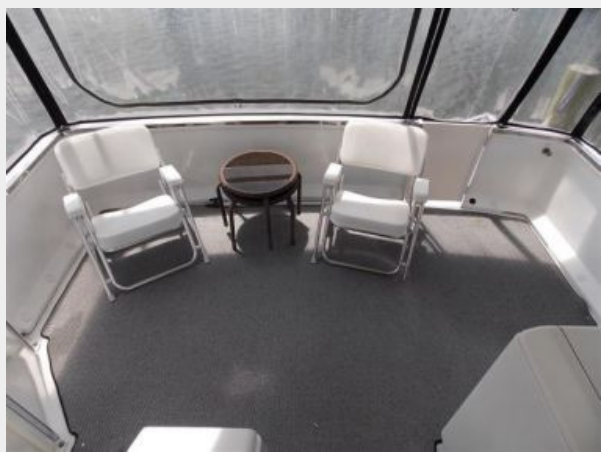
Aft Deck



Wet Bar



Aft Deck with Canvas



Aft Deck



Cockpit



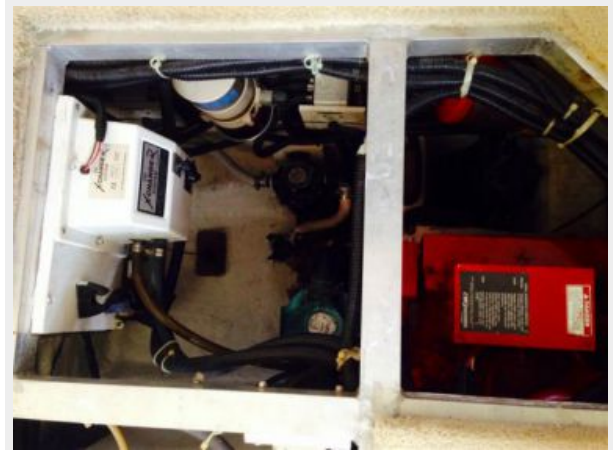
Cockpit



Cockpit



Engine Room 1



Engine Room 2



Engine Room 3



Forward Deck

Forward Deck from Starboard Side



Port Walkway



Wide Walkway



New Bottom Job 1



New Bottom Job 2



New Bottom Job 3



At Dock



Underway



Port Profile



Port Forward Quarter



Port Aft Quarter



Starboard Profile



Starboard Forward Quarter



Starboard Aft Quarter



Bow



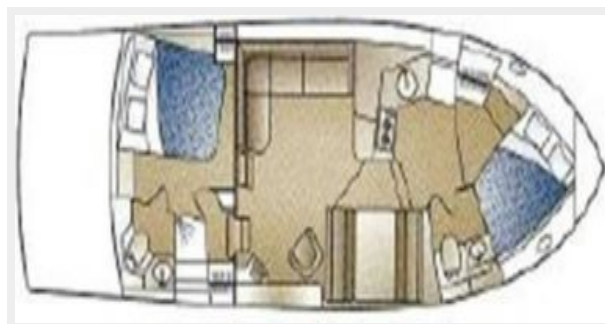
Stern



Factory Running Shot



Layout



CONTACTS

Andrey Shestakov, leading yacht broker of the sales department of Shestakov Yacht Sales Inc. Shestakov Yacht Sales Inc., the official representative of the Miami/Fort Lauderdale FL headquarters.

Contact details

Email: andrey@shestakovyachtsales.com

Web: shestakovyachtsales.com/en/

Telephones

USA: +1(954)274-4435

Office hours

Monday – Saturday: **9:00 - 21:00** EDT

Sunday: **closed**

Address



Harbour Towne Marina, 850 NE 3rd St,
STE 213, Dania, FL 33004