

## LADY ANN — GRAND BANKS



**Builder:** GRAND BANKS

**Year Built:** 2006

**Model:** Trawler

**Price:** PRICE ON APPLICATION

**Location:** United States

**LOA:** 47' 0" (14.33m)

**Beam:** 15' 9" (4.80m)

**Max Draft:** 3' 10" (1.17m)

**Cruise Speed:** 19 Kts. (22 MPH)

**Max Speed:** 23 Kts. (26 MPH)

Our experienced yacht broker, Andrey Shestakov, will help you choose and buy a yacht that best suits your needs **LADY ANN — GRAND BANKS** from our catalogue. Presently, at Shestakov Yacht Sales Inc., we have a wide variety of yachts available on our sale's list. We also work in close contact with all the big yacht manufacturers from all over the world.

If you would like to buy a yacht **LADY ANN — GRAND BANKS** or would like help answering any questions concerning purchasing, selling or chartering a yacht, please call **+1(954)274-4435**

# TABLE OF CONTENTS

---

TABLE OF CONTENTS	2
SPECIFICATIONS	4
Overview	4
Basic Information	4
Dimensions	4
Speed, Capacities and Weight	4
Accommodations	4
Hull and Deck Information	5
Engine Information	5
DETAILED INFORMATION	6
Highlights	6
Manufacturer Description	6
Accommodations	6
Grand Banks Options	6
Engines & Mechanical	7
Electrical System	7
Electronics / Navigation	8
Cockpit / Deck Equipment	8
Galley	8
Broker Comments	9
Exclusions	9
Disclaimer	9
PHOTOS	10
Manufacturer Provided	13
Manufacturer Provided	14
Manufacturer Provided	14
CAT Platinum Warranty	14
CONTACTS	15

---

Contact details	15
Telephones	15
Office hours	15
Address	15

---

# SPECIFICATIONS

---

## Overview

---

### Basic Information

---

**Category:** Trawler

**Model Year:** 2006

**Year Built:** 2006

**Country:** United States

### Dimensions

---

**LOA:** 47' 0" (14.33m)

**LWL:** 44' 1" (13.44m)

**Beam:** 15' 9" (4.80m)

**Max Draft:** 3' 10" (1.17m)

### Speed, Capacities and Weight

---

**Cruise Speed:** 19 Kts. (22 MPH)

**Max Speed:** 23 Kts. (26 MPH)

**Max Speed Range:** 570 Kts.

**Displacement:** 51233 Pounds

**Water Capacity:** 260 Gallons

**Holding Tank:** 77 Gallons

**Fuel Capacity:** 600 Gallons

### Accommodations

---

**Total Cabins:** 2

**Total Berths:** 2

**Sleeps:** 4

**Total Heads:** 2

---

## Hull and Deck Information

---

**Hull Material:** Fiberglass

**Hull Configuration:** Semi-Displacement

**Hull Designer:** Sparkman & Stevens

---

## Engine Information

---

**Engines:** 2

**Manufacturer:** Caterpillar

**Model:** C-9

**Engine Type:** Inboard

**Fuel Type:** Diesel

---

## DETAILED INFORMATION

---

### Highlights

---

New generation EUROPA Model built on modified-V hull that combines planning speeds, trawler speeds and graceful styling all wrapped in GRAND BANKS impeccable quality. Highlights include elegant teak interior with granite counters teak-planked cabin sole throughout, extended aft deck overhang, teak decks, protected side decks, frameless windows, flybridge stairway, meticulous engine room. Guest cabin/office layout with fold out double bed. Hull extends under swim platform for additional buoyancy/performance. CATERPILLAR C-9's with 1100 hours. Plus CAT Platinum Warranty extended to May 29, 2017 or 1964 hours whichever comes first - and possible 24 month, 600 hour extension after that. Cruise at 19 knots 1/2 load fuel. Dry stored in a building for the summer in Florida and previously spent half its life in fresh water and dry stored in the winter so looks like new!

### Manufacturer Description

---

The all-new 47EU is the new generation Grand Banks with a higher performance bottom was designed and built for today's discerning yachtsman. Step aboard, set your course and you know immediately that it's a Grand Banks: rock-solid reliability, balanced by graceful lines and gracious interiors. The essence of yachting, captured in fine craftsmanship at every turn. Push forward the throttles and you begin to discover new surprises: soon you're nearing 22 knots, riding smooth and trim atop its modified deep-V hull. Inside it's broader, brighter. Outside it's another great day for a cruise.

### Accommodations

---

Generous salon, galley up with optional Grand Banks guest stateroom "lounge style" convertible double berth layout. Located on the starboard side this guest area can be privatized by pulling the pocket doors closed. It provides a nice wide open area when one couple cruising. Guest head/day head opposite lounge area, features washer & dryer, storage in cupboards, drawers & lockers, wet head with shower, sink & commode. Master stateroom forward has first & foremost a low profile walk around queen berth; generous storage in cedar lined lockers, drawers & cupboard. Port lights, overhead hatches & separate air/ heat controls provide total climate control. Master head has stall shower, storage, vanity, electric china bowl toilet.

### Grand Banks Options

---

LADY ANN is equipped with the following Grand Banks options:

- 11' Nautica Tender, 2009
- F03 Layout with washer/dryer space option

- Racor cross over fuel filter system
- Interior teak trim: High Gloss/cabin soles: Satin
- Caterpillar MPD Gauges-Upper & lower helm
- GB overhead dish locker in galley, added storage
- Oceanair Skysol Blinds: All windows & door
- Bow Thruster with additional 8D Battery
- U-Line Ice maker inside flybridge wet bar
- Additional STIDD Seat on Fly bridge
- Custom Salon L-Settee with pull-out berth
- Washer & Dryer in guest head
- Salon Air conditioning (2) 12,000 BTU each
- Forward air conditioning (1) 16,000 BTU Unit
- Generator; Onan 11.5 kw w/800 hours
- Bimini Top (Current owner added in 2014 a canopy and railings to aft end of boat deck for additional seating)
- Marquipt-MarQ 6 Davit Craine w/electric winch & lifting harness

---

## Engines & Mechanical

---

- Caterpillar C-9's, Inline 6 cylinder, 503 hp
- Holding tank 77 gallons
- Twin Disc MG 5075A Transmissions 2.53:1
- 2.5" SS shafts
- Strong Seal shaft seals
- DuraMax Cutlass Bearings
- Racor dual fuel filters w/pressure gauges
- Bennet Trim Tabs
- Reverso Oil change System
- FireBouy FE241 fire suppression system
- Shurflo (Smart Sensor) fresh water pump
- 20 gallon SeaWard water heater; 110volt +engine heated
- AC & DC Engine room lights
- Sound insulation w/upgraded foam engine room insulation, (very quiet)
- Teleflex Hydraulic Steering
- Marine Air/Heat systems
- Engine parts spares & generator parts spares

---

## Electrical System

---

- 50amp 220volt system
- 12 volt on board system
- 11.5 kw Onan gen set in hush box (800 hours)

- 2600 Charles inverter/charger w/remote panel
- ProSafe galvanic isolator
- 4 Northstar AGM batteries
- 1 Lifeline AGM start battery
- 1 Lifeline AGM 8D start/service battery
- Vimar outlets & switches
- Fore & aft shore power inlets
- New batteries 2014

---

## Electronics / Navigation

---

All electronics installed 2009:

- Complete RayMarine package includes: 2-E120 Screens at each station
- RayMarine Autopilot
- Open Ray RayMarine 48' mile radar antenna
- 2-RayMarine VHF radios
- AIS Identification System for safety
- RayMarine MOB system
- KVH dome w/sat TV

---

## Cockpit / Deck Equipment

---

- Marquipt MarQ 6 Davit Crane w/electric winch & lifting harness
- Lofrans Tigress 1200W windlass
- Refrigerator cooler/freezer Aft Deck
- Transom door with swim platform & fold down safety ladder
- Hot/cold shower at stern
- SS handrails around vessel
- Foredeck locker
- Single large lazarette hatch w/gas assist, DC lighting in lazarette
- Deck lights
- Large SS cleats w/dual cleats amidships
- Extended seating on boat deck with stainless steel railings all around. These can be removed for tender installation - chocks and tender available for purchase.

---

## Galley

---



- Open to Salon this galley is easy to use and entertain at the same time
- SS sink w/pressure hot & cold water, Grohe Faucet
- Tundra Refrigerator & Freezer U-Line ice maker on Flybridge
- Princess glass top stove w/3 burners
- Microwave/convection oven
- Storage in drawers & cabinets PLUS Grand Banks optional overhead dish locker

---

## Broker Comments

---

LADY ANN is a two owner vessel that has had low use for her age and most of it was lower river and intercoastal speeds. She was acquired in the Great Lakes to live aboard. On the first owners exploration trip to scout out places to cruise and keep the Grand Banks, the owner purchased a home in Cape Coral so no need for the live aboard vessel. The vessel was returned to the Great Lakes and was purchased by the second owner who took her to Florida, for winter use only. LADY ANN was originally configured with a tender on the Aft Deck. Second owner reconfigured this area with an extra railings and more seating, making the Flybridge area extra large. Engine room area is accessed under the Flybridge stairs. There is a second entrance in the teak sole next to the helm. Exclusions: Owners personal effects, tools and some seating that is used on another boat.

---

## Exclusions

---

Owner's personal belongings.

---

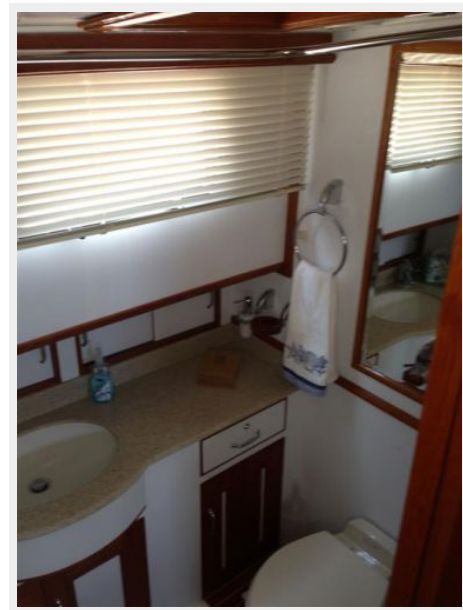
## Disclaimer

---

The Company offers the details of this vessel or yacht in good faith but cannot guarantee or warrant the accuracy of this information nor warrant the condition of the vessel. A buyer should instruct his representatives, agents, or his surveyors, to investigate such details as the buyer desires validated. This vessel or yacht is offered subject to prior sale, price change, or withdrawal without notice.

# PHOTOS

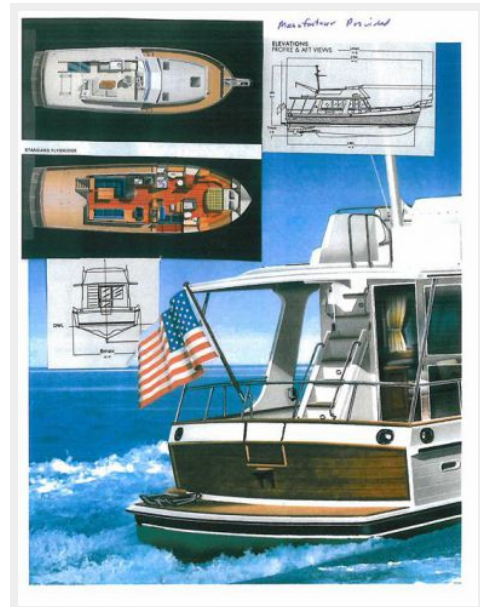








### Manufacturer Provided



**Manufacturer Provided**



**Manufacturer Provided**



**CAT Platinum Warranty**

The engines currently have Platinum 48 Month/3200 Hour/50% Deductible ESC's. With an Expiration Date of 05/31/2017, or all 3200 Engine Hours, whichever comes first. Below is each engines Coverage Statement from Caterpillar:

CSM01050:

Coverage Code:	N477 ADV 400912	Coverage to
Description:	ADV PLATINUM - 48/3200 D008 ENGINE	Coverage to

CSM01062:

Coverage Code:	N477 ADV 400912	Coverage to
Description:	ADV PLATINUM - 48/3200 D008 ENGINE	Coverage to

In regards to additional coverage being available, yes, you can perform a Policy Upgrade and add another 24 Month/600 Hours of coverage to each engines current ESC. For this, I have requested pricing from Caterpillar Insurance. Of which I will forward to you, once received.

Thanks,  
Marc

Marc Michals  
Pantropic Power, Inc.  
Marine Power Product Support Representative  
Caterpillar New Engine Sales  
Caterpillar New, Used and Commercial Extended Service Contract Sales  
5460 Chewhobee Blvd  
West Palm Beach, FL 33417  
Mobile: 561-350-9172  
Fax: 305-639-0088

**FREE ON-SITE MARINE ENGINE HEALTH INSPECTION**  
A CAT-trained professional will conduct oil & coolant sample analysis, ECM diagnostic & consultation.

Take advantage of this offer, contact Marc Michals, Marine Sales & Support - 561-350-9172 now at our representatives today!

<b>PANTROPIC POWER</b>	<b>CAT</b>	4700 NW 38th St Miami, FL 33165 (305) 550-4344	1801 SW 84th St FL 33155 (305) 550-4344	5460 Chewhobee Blvd West Palm Beach, FL 33417 (561) 350-9172
------------------------	------------	--	---	--

NOTICE: Pantropic Power reserves the right to correct any errors or omissions. The information contained in this e-mail may be highly privileged and confidential for the sole use of the intended recipient. Any use, distribution, transmission or reproduction of information contained in this e-mail by anyone who is not intended recipient may be a violation of law and is strictly prohibited. If you are not the intended recipient, please contact the sender and delete all copies.

---

# CONTACTS

---

Andrey Shestakov, leading yacht broker of the sales department of Shestakov Yacht Sales Inc. Shestakov Yacht Sales Inc., the official representative of the Miami/Fort Lauderdale FL headquarters.

---

## Contact details

---

Email: [andrey@shestakovyachtsales.com](mailto:andrey@shestakovyachtsales.com)

Web: [shestakovyachtsales.com/en/](http://shestakovyachtsales.com/en/)

---

## Telephones

---

USA: +1(954)274-4435

---

## Office hours

---

Monday – Saturday: **9:00 - 21:00** EDT

Sunday: **closed**

---

## Address

---



Harbour Towne Marina, 850 NE 3rd St,  
STE 213, Dania, FL 33004