

LADY ANN — GRAND BANKS



Судостроитель: GRAND BANKS

Год постройки: 2006

Модель: Траулер

Цена: ЦЕНА ЯХТЫ ПО ЗАПРОСУ

Местонахождение: United States

Длина общая: 47' 0" (14.33m)

Ширина: 15' 9" (4.80m)

Макс. осадка: 3' 10" (1.17m)

Крейс. скорость: 19 Kts. (22 MPH)

Макс. скорость: 23 Kts. (26 MPH)

Купить **LADY ANN — GRAND BANKS** а также выбрать подходящую вам яхту из нашего каталога яхт вам поможет опытный яхтенный брокер Андрей Шестаков. На сегодняшний день компания **Shestakov Yacht Sales Inc.** имеет большое количество яхт в собственном списке продаж, а также тесно сотрудничает со всеми крупными яхтенными производителями по всему миру.

Для того чтобы купить яхту **LADY ANN — GRAND BANKS** а также проконсультироваться по любому вопросу связанному с покупкой, продажей, чартером яхт позвоните по телефону **+7(918)465-66-44**.

ОГЛАВЛЕНИЕ

ОГЛАВЛЕНИЕ	2
ХАРАКТЕРИСТИКИ	4
Обзор	4
Основная информация	4
Размеры	4
Скорость, вместимость и масса	4
Размещение	4
Корпус и палуба	5
Информация о двигателе	5
ПОДРОБНОЕ ОПИСАНИЕ	6
Highlights	6
Manufacturer Description	6
Accommodations	6
Grand Banks Options	6
Engines & Mechanical	7
Electrical System	7
Electronics / Navigation	8
Cockpit / Deck Equipment	8
Galley	8
Broker Comments	9
Исключения	9
Отказ от ответственности	9
ФОТОГРАФИИ	10
Manufacturer Provided	13
Manufacturer Provided	14
Manufacturer Provided	14
CAT Platinum Warranty	14
КОНТАКТЫ	15

Контактная информация	15
Телефоны	15
Время работы	15
Адрес	15

ХАРАКТЕРИСТИКИ

Обзор

Основная информация

Тип судна: Траулер

Модельный год: 2006

Год постройки: 2006

Страна: United States

Размеры

Длина общая: 47' 0" (14.33m)

Длина по ватерлинии: 44' 1" (13.44m)

Ширина: 15' 9" (4.80m)

Макс. осадка: 3' 10" (1.17m)

Скорость, вместимость и масса

Крейс. скорость: 19 Kts. (22 MPH)

Макс. скорость: 23 Kts. (26 MPH)

Дальность на макс. скорости: 570 Kts.

Водоизмещение: 51233 Pounds

Вместимость воды: 260 Gallons

Вместимость сточного бака: 77 Gallons

Объем топливного бака: 600 Gallons

Размещение

Всего кают: 2

Всего коек: 2

Спальные места: 4

Всего ком. состава: 2

Корпус и палуба

Материал корпуса: Fiberglass

Комплектация корпуса: Semi-Displacement

Дизайнер корпуса: Sparkman & Stevens

Информация о двигателе

Двигатели: 2

Производитель: Caterpillar

Модель: C-9

Тип двигателя: Inboard

Тип топлива: Diesel

ПОДРОБНОЕ ОПИСАНИЕ

Highlights

New generation EUROPA Model built on modified-V hull that combines planning speeds, trawler speeds and graceful styling all wrapped in GRAND BANKS impeccable quality. Highlights include elegant teak interior with granite counters teak-planked cabin sole throughout, extended aft deck overhang, teak decks, protected side decks, frameless windows, flybridge stairway, meticulous engine room. Guest cabin/office layout with fold out double bed. Hull extends under swim platform for additional buoyancy/performance. CATERPILLAR C-9's with 1100 hours. Plus CAT Platinum Warranty extended to May 29, 2017 or 1964 hours whichever comes first - and possible 24 month, 600 hour extension after that. Cruise at 19 knots 1/2 load fuel. Dry stored in a building for the summer in Florida and previously spent half its life in fresh water and dry stored in the winter so looks like new!

Manufacturer Description

The all-new 47EU is the new generation Grand Banks with a higher performance bottom was designed and built for today's discerning yachtsman. Step aboard, set your course and you know immediately that it's a Grand Banks: rock-solid reliability, balanced by graceful lines and gracious interiors. The essence of yachting, captured in fine craftsmanship at every turn. Push forward the throttles and you begin to discover new surprises: soon you're nearing 22 knots, riding smooth and trim atop its modified deep-V hull. Inside it's broader, brighter. Outside it's another great day for a cruise.

Accommodations

Generous salon, galley up with optional Grand Banks guest stateroom "lounge style" convertible double berth layout. Located on the starboard side this guest area can be privatized by pulling the pocket doors closed. It provides a nice wide open area when one couple cruising. Guest head/day head opposite lounge area, features washer & dryer, storage in cupboards, drawers & lockers, wet head with shower, sink & commode. Master stateroom forward has first & foremost a low profile walk around queen berth; generous storage in cedar lined lockers, drawers & cupboard. Port lights, overhead hatches & separate air/ heat controls provide total climate control. Master head has stall shower, storage, vanity, electric china bowl toilet.

Grand Banks Options

LADY ANN is equipped with the following Grand Banks options:

- 11' Nautica Tender, 2009
- F03 Layout with washer/dryer space option

- Racor cross over fuel filter system
- Interior teak trim: High Gloss/cabin soles: Satin
- Caterpillar MPD Gauges-Upper & lower helm
- GB overhead dish locker in galley, added storage
- Oceanair Skysol Blinds: All windows & door
- Bow Thruster with additional 8D Battery
- U-Line Ice maker inside flybridge wet bar
- Additional STIDD Seat on Fly bridge
- Custom Salon L-Settee with pull-out berth
- Washer & Dryer in guest head
- Salon Air conditioning (2) 12,000 BTU each
- Forward air conditioning (1) 16,000 BTU Unit
- Generator; Onan 11.5 kw w/800 hours
- Bimini Top (Current owner added in 2014 a canopy and railings to aft end of boat deck for additional seating)
- Marquipt-MarQ 6 Davit Craine w/electric winch & lifting harness

Engines & Mechanical

- Caterpillar C-9's, Inline 6 cylinder, 503 hp
- Holding tank 77 gallons
- Twin Disc MG 5075A Transmissions 2.53:1
- 2.5" SS shafts
- Strong Seal shaft seals
- DuraMax Cutlass Bearings
- Racor dual fuel filters w/pressure gauges
- Bennet Trim Tabs
- Reverso Oil change System
- FireBouy FE241 fire suppression system
- Shurflo (Smart Sensor) fresh water pump
- 20 gallon SeaWard water heater; 110volt +engine heated
- AC & DC Engine room lights
- Sound insulation w/upgraded foam engine room insulation, (very quiet)
- Teleflex Hydraulic Steering
- Marine Air/Heat systems
- Engine parts spares & generator parts spares

Electrical System

- 50amp 220volt system
- 12 volt on board system
- 11.5 kw Onan gen set in hush box (800 hours)

- 2600 Charles inverter/charger w/remote panel
- ProSafe galvanic isolator
- 4 Northstar AGM batteries
- 1 Lifeline AGM start battery
- 1 Lifeline AGM 8D start/service battery
- Vimar outlets & switches
- Fore & aft shore power inlets
- New batteries 2014

Electronics / Navigation

All electronics installed 2009:

- Complete RayMarine package includes: 2-E120 Screens at each station
- RayMarine Autopilot
- Open Ray RayMarine 48' mile radar antenna
- 2-RayMarine VHF radios
- AIS Identification System for safety
- RayMarine MOB system
- KVH dome w/sat TV

Cockpit / Deck Equipment

- Marquipt MarQ 6 Davit Crane w/electric winch & lifting harness
- Lofrans Tigress 1200W windlass
- Refrigerator cooler/freezer Aft Deck
- Transom door with swim platform & fold down safety ladder
- Hot/cold shower at stern
- SS handrails around vessel
- Foredeck locker
- Single large lazarette hatch w/gas assist, DC lighting in lazarette
- Deck lights
- Large SS cleats w/dual cleats amidships
- Extended seating on boat deck with stainless steel railings all around. These can be removed for tender installation - chocks and tender available for purchase.

Galley

- Open to Salon this galley is easy to use and entertain at the same time
- SS sink w/pressure hot & cold water, Grohe Faucet
- Tundra Refrigerator & Freezer U-Line ice maker on Flybridge
- Princess glass top stove w/3 burners
- Microwave/convection oven
- Storage in drawers & cabinets PLUS Grand Banks optional overhead dish locker

Broker Comments

LADY ANN is a two owner vessel that has had low use for her age and most of it was lower river and intercoastal speeds. She was acquired in the Great Lakes to live aboard. On the first owners exploration trip to scout out places to cruise and keep the Grand Banks, the owner purchased a home in Cape Coral so no need for the live aboard vessel. The vessel was returned to the Great Lakes and was purchased by the second owner who took her to Florida, for winter use only. LADY ANN was originally configured with a tender on the Aft Deck. Second owner reconfigured this area with an extra railings and more seating, making the Flybridge area extra large. Engine room area is accessed under the Flybridge stairs. There is a second entrance in the teak sole next to the helm. Exclusions: Owners personal effects, tools and some seating that is used on another boat.

Исключения

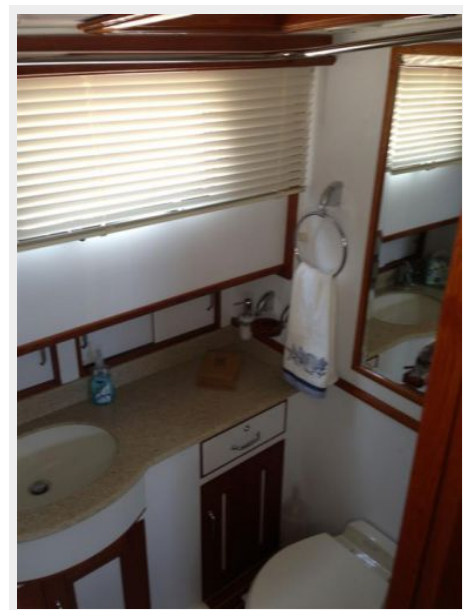
При продаже яхты исключаются личные вещи владельца.

Отказ от ответственности

Компания предоставляет описание судна или яхты добросовестно, но не может гарантировать точность этой информации, а также не ручается за техническое состояние. Покупатель должен проинструктировать своих агентов или оценщиков исследовать представленную информацию более подробно, по собственному желанию. Продажа судна или яхты, изменение цены или снятие с продажи будет происходить без предварительного уведомления.

ФОТОГРАФИИ

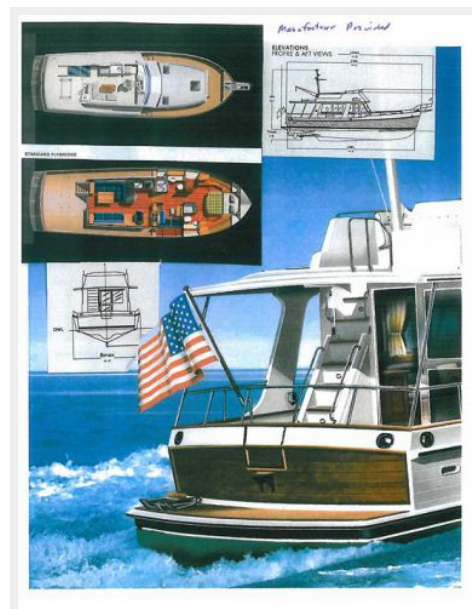








Manufacturer Provided



Manufacturer Provided



Manufacturer Provided



CAT Platinum Warranty

The engines currently have Platinum 48 Month/3200 Hour/50% Deductible ESC's. With an Expiration Date of 05/29/2017, or all 3200 Engine Hours, whichever comes first. Below is each engines Coverage Statement from Caterpillar:

CSM01050:

Coverage Code:	N477 ADV 400912	Coverage to
Description:	ADV PLATINUM - 48/3200 D008 ENGINE	Coverage to

CSM01062:

Coverage Code:	N477 ADV 400912	Coverage to
Description:	ADV PLATINUM - 48/3200 D008 ENGINE	Coverage to

In regards to additional coverage being available, yes, you can perform a Policy Upgrade and add another 24 Month/600 Hours of coverage to each engines current ESC. For this, I have requested pricing from Caterpillar Insurance. Of which I will forward to you, once received.

Thanks,
Marc

Marc Michals
Pantropic Power, Inc.
Marine Power Product Support Representative
Caterpillar New Engine Sales
Caterpillar New, Used and Commercial Extended Service Contract Sales
5460 Chesapeake Blvd
West Palm Beach, FL 33417
Mobile: 561-350-9172
Fax: 305-639-0088

FREE ON-SITE MARINE ENGINE HEALTH INSPECTION
A CAT-trained professional will conduct oil & coolant sample analysis, ECM diagnostic & consultation.

Take advantage of this offer, contact Marc Michals, Marine Sales & Support - 561-350-9172 now at our representatives today!

PANTROPIC POWER	CAT	4700 NW 38th St Miami, FL 33149 (305) 550-4344	1801 SW 84th St FL 33155 (561) 767-7977	5460 Chesapeake Blvd West Palm Beach, FL 33417 (561) 350-9172
------------------------	------------	------------------------------------------------------	-----------------------------------------------	---------------------------------------------------------------------

NOTICE: Pantropic Power reserves the right to correct any errors or omissions. The information contained in this e-mail may be highly privileged and confidential for the sole use of the intended recipient. Any use, distribution, transmission or reproduction of information contained in this e-mail by anyone who is not intended recipient may be a violation of law and is strictly prohibited. If you are not the intended recipient, please contact the sender and delete all copies.

КОНТАКТЫ

Андрей Шестаков (Andrey Shestakov) – ведущий яхтенный брокер отдела продаж яхт и судов компании Shestakov Yacht Sales Inc. Официальный представитель Shestakov Yacht Sales Inc. для русскоговорящих клиентов в центральном офисе компании в Майами/Форт Лодердейл/Флорида/США.

Контактная информация

Email: andrey@shestakovyachtsales.com

Web: shestakovyachtsales.com

Телефоны

Краснодарский край: **+7(918)465-66-44**

США, Майами, Флорида: **+1(954)274-4435**

Время работы

Понедельник – Суббота: **9:00 - 21:00**
EDT

Воскресенье: **Закрито**

Адрес



Harbour Towne Marina, 850 NE 3rd St,
STE 213, Dania, FL 33004