

## IN STOCK — JARRETT BAY



**Builder:** JARRETT BAY

**Year Built:** 2015

**Model:** Sport Fisherman

**Price:** PRICE ON APPLICATION

**Location:** United States

**LOA:** 34' 0" (10.36m)

**Beam:** 11' 2" (3.40m)

**Max Draft:** 2' 0" (0.61m)

Our experienced yacht broker, Andrey Shestakov, will help you choose and buy a yacht that best suits your needs **In Stock — JARRETT BAY** from our catalogue. Presently, at Shestakov Yacht Sales Inc., we have a wide variety of yachts available on our sale's list. We also work in close contact with all the big yacht manufacturers from all over the world.

If you would like to buy a yacht **In Stock — JARRETT BAY** or would like help answering any questions concerning purchasing, selling or chartering a yacht, please call **+1(954)274-4435**

---

# TABLE OF CONTENTS

---

TABLE OF CONTENTS	2
SPECIFICATIONS	4
Overview	4
Basic Information	4
Dimensions	4
Speed, Capacities and Weight	4
Accommodations	4
Hull and Deck Information	5
Engine Information	5
DETAILED INFORMATION	6
Hull	6
Deck	6
Cockpit	6
Helm Deck	7
Mechanical	7
Electrical	7
Hardtop	8
Galley	8
Cabin	8
Head Compartment	8
Safety Equipment	9
Options	9
Disclaimer	9
Exclusions	9
Disclaimer	10
PHOTOS	11
CONTACTS	20
Contact details	20

---

Telephones	20
Office hours	20
Address	20

---

# SPECIFICATIONS

---

## Overview

---

Get 3 years of Yamaha limited extended warranty, along with the additional protection of a 3-year Yamaha Extended Service (YES) plan if you take delivery of this boat between now and June 30, 2016. This newly re-launched Jarrett Bay 34 Walk-Around Express continues the legendary ride and handling and is equipped with many of the fishing features you've come to expect - dedicated gaff stowage, five in-sole fish boxes, and a wide-open cockpit that accommodates four anglers.

At our docks, the 34 is built with upgraded twin Yamaha 350 hp. Upgrades include a bench style helm seat which folds into a leaning post on top of a fiberglass storage box, and additional seating can be found within the port and starboard gunnels via folding seats.

## Basic Information

---

**Category:** Sport Fisherman

**Model Year:** 2015

**Year Built:** 2015

**Country:** United States

## Dimensions

---

**LOA:** 34' 0" (10.36m)

**Beam:** 11' 2" (3.40m)

**Max Draft:** 2' 0" (0.61m)

## Speed, Capacities and Weight

---

**Displacement:** 8500 Pounds

**Fuel Capacity:** 327 Gallons

## Accommodations

---

**Total Cabins:** 1

---

## Hull and Deck Information

---

**Hull Material:** Fiberglass

## Engine Information

---

**Engines:** 2

**Manufacturer:** Yamaha

**Model:** 350

**Engine Type:** Outboard

**Fuel Type:** Gas

---

# DETAILED INFORMATION

---

## Hull

---

- Solid glass fiberglass hull bottom with composite hull sides
- Encapsulated foam core stringers
- Molded fiberglass construction with superior ISO/NPG gelcoat finish and bi-axial stitched fabric reinforcement, solid glass hull bottom
- Premium quality molded-in white gelcoat finish
- Stainless steel rub rail
- Lenco Trim tabs with indicator switch
- Stainless steel trailer eye
- Aluminum fuel tank
- Polyethylene fresh water tank
- Polyethylene sewage holding tank, plumbed for dockside pump out with a y valve

## Deck

---

- Molded fiberglass construction with superior ISO/NPG gelcoat finish and bi-axial stitched fabric reinforcement
- Molded-in non-skid surface
- Premium quality molded-in white gelcoat finish
- Stainless steel bow cleats, two (2) pop up, through-bolted
- Stainless steel spring cleats, two (2) pop up, through-bolted
- Stainless steel hawse pipes, 12" stainless steel
- Molded seat forward with cushions
- Stainless steel thru hulls
- Anchor mounting tube inside locker
- Hatch with access to rope locker
- Fortress anchor with 150 1/2" rope with hardware
- Twin storage boxes, hinged with gas assisted cylinders
- All hatches have gutters and drains
- Deck plates for fuel and water fills & waste pump-out

## Cockpit

---

- LED courtesy lighting under gunwales
- Fishbox, 50 gallon, transom, plumbed with livewell
- Self bailing cockpit scuppers
- Gunnel mounted stainless steel rod holders (4) gunwale
- Freshwater washdown

- Saltwater washdown
- Twin (72" x 12" x 16") molded in fish boxes with macerator
- Stereo speakers (2)
- Twin gaff storage ports
- Folding bench seat (port & starboard)
- Hinged, gas assisted hatch with access to lazarette
- Stainless steel hawse pipes for cleats
- Twin storage boxes - flush deck in walk around (67"long x 21"d x 17"w)

---

## Helm Deck

---

- Walk around model
- 36" double bench seat with articulating arm rests, roll-back bolster and heavy-duty seat slide mounted on deluxe tackle storage station
- Helm console, integrally molded
- Companionway door, white acrylic with latch & lock
- Pod style helm console with compass
- Electronic controls with engine instrumentation
- Complete custom engine instrument panel with audible warning signal
- Bilge water level alarms, audible
- Stainless steel helm wheel with power knob
- Accessory outlet, one 12V
- Courtesy lights (LED)
- Hinged, gas assisted hatch with access to pump room
- Stereo system - Fushion IP7001I with (4) speakers

---

## Mechanical

---

- Rule bilge pumps with float switches and high water alarms (2)
- Bilge, white gelcoated finish
- Double hose clamps on all hose fittings below the waterline
- Engine alarm system
- Engine hour meters
- High water bilge alarm
- MPI Premium marine fuel line USCG Type A1
- Two fuel manual select switches
- Power hydraulic steering
- Lenco Trim Tabs

---

## Electrical

---

- 30-amp shorepower cord
- Batteries (3), Deka
- Battery charger, automatic
- Battery on/off switches vapor proof
- Bonded electrical system
- DC electrical panel 12V
- Navigation lights
- Zincs
- Type 3 UL 1426 listed boat cable, tin coated, ABYC approved

---

## Hardtop

---

- Molded fiberglass with radio box
- Twin molded spreader lights (2)
- Rod holders (6) across top
- Recessed navigation lights
- DC lights (2) LED
- Taco Grand Slam outriggers with center rigger
- Three sided enclosure strataglass

---

## Galley

---

- AC duplex outlet/GFI protected
- Solid surface countertop
- Positive latches on cabinets

---

## Cabin

---

- Cherry interior trim, rail and panel wood doorway and doors
- Bow V-berths with 7' rod storage below
- Recessed DC lights
- V Berth cushions with two (2) throw pillows
- Bomar hatch overhead
- Hatch access to bilge
- 110V electrical outlet (GFI protected)
- Storage - steps

---

## Head Compartment

---

- Jabsco Head, electric plumbed to freshwater with macerator



- Recessed DC lights - LED
- Positive latches on cabinet doors
- Enclosed full height head with cherry rail and panel companionway door
- Solid surface countertop with stainless steel sink
- Sealed automatic sump pump
- Toiletry storage cabinet and vanity base
- Medicine cabinet with mirror
- 110V electrical outlet

---

## Safety Equipment

---

- Self bailing cockpit
- Non-skid fiberglass deck
- Stainless thru hulls
- Armstrong motor bracket - positive flotation - white
- Boarding ladder

---

## Options

---

- Upgraded 350hp Yamaha engines
- Cockpit coaming pads
- Bottom Paint

---

## Disclaimer

---

While we attempt to display current and accurate data, this listing may not reflect the most recent transactions or may contain occasional data entry errors. Selling agent makes no warranties, express or implied, regarding the content or availability of the products described herein. All inventory listed is subject to availability and prior sale. Please consult selling agent for details. Prices are quoted for the USA only and may not include transportation, taxes, or other applicable charges. Photographs may be representative only and may vary somewhat from the actual items offered for sale. We will not be responsible for inaccurate data obtained from our site. Please check with your local dealer to ensure that you have the latest information available. Information on this web site could include technical inaccuracies or typographical errors. Changes may be periodically made to the information or the products herein. Questions or comments regarding these policies may be directed to website hosting agent.

---

## Exclusions

---

Owner's personal belongings.

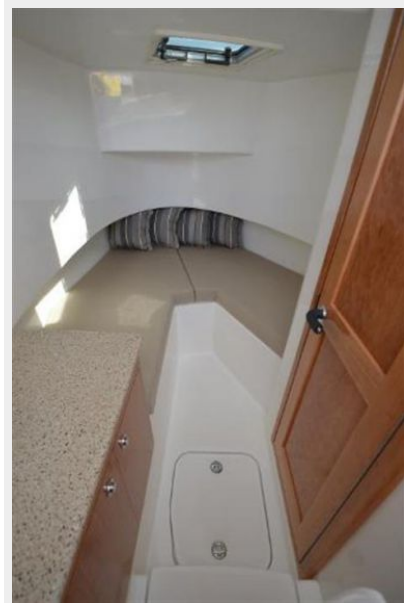
---

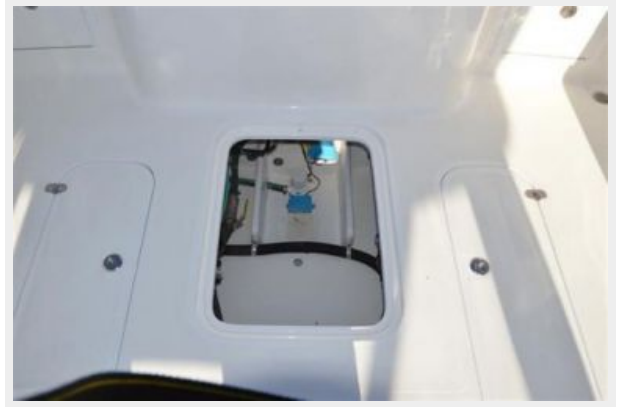
## Disclaimer

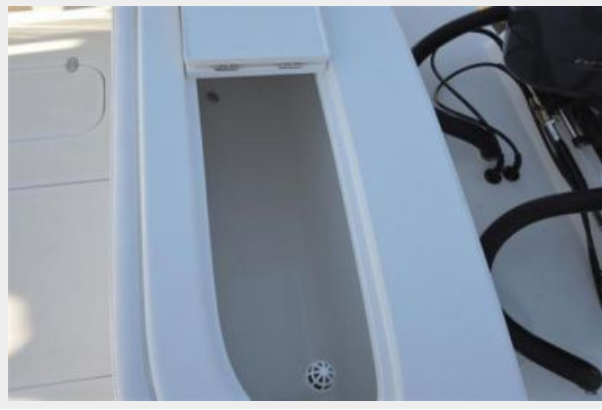
---

The Company offers the details of this vessel or yacht in good faith but cannot guarantee or warrant the accuracy of this information nor warrant the condition of the vessel. A buyer should instruct his representatives, agents, or his surveyors, to investigate such details as the buyer desires validated. This vessel or yacht is offered subject to prior sale, price change, or withdrawal without notice.

# PHOTOS









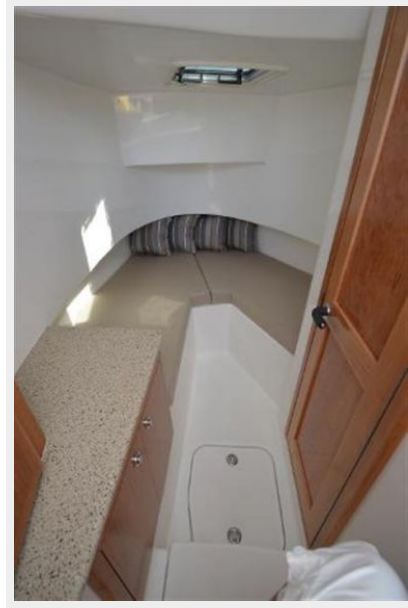














# CONTACTS

---

Andrey Shestakov, leading yacht broker of the sales department of Shestakov Yacht Sales Inc. Shestakov Yacht Sales Inc., the official representative of the Miami/Fort Lauderdale FL headquarters.

## Contact details

---

Email: [andrey@shestakovyachtsales.com](mailto:andrey@shestakovyachtsales.com)

Web: [shestakovyachtsales.com/en/](http://shestakovyachtsales.com/en/)

## Telephones

---

USA: +1(954)274-4435

## Office hours

---

Monday – Saturday: **9:00 - 21:00** EDT

Sunday: **closed**

## Address

---



Harbour Towne Marina, 850 NE 3rd St,  
STE 213, Dania, FL 33004