

DA BOAT — CRUISERS YACHTS



Builder: [Cruisers Yachts](#)

Year Built: 2012

Model: Cruiser

Price: PRICE ON APPLICATION

Location: United States

LOA: 41' 0" (12.50m)

Beam: 13' 0" (3.96m)

Max Draft: 0' 11" (0.28m)

Cruise Speed: 26 Kts. (30 MPH)

Max Speed: 30 Kts. (35 MPH)

Our experienced yacht broker, Andrey Shestakov, will help you choose and buy a yacht that best suits your needs **Da Boat — Cruisers Yachts** from our catalogue. Presently, at Shestakov Yacht Sales Inc., we have a wide variety of yachts available on our sale's list. We also work in close contact with all the big yacht manufacturers from all over the world.

If you would like to buy a yacht **Da Boat — Cruisers Yachts** or would like help answering any questions concerning purchasing, selling or chartering a yacht, please call **+1(954)274-4435**

TABLE OF CONTENTS

TABLE OF CONTENTS	2
SPECIFICATIONS	5
Overview	5
Basic Information	5
Dimensions	6
Speed, Capacities and Weight	6
Accommodations	6
Hull and Deck Information	6
Engine Information	6
DETAILED INFORMATION	7
Hull & Deck	7
Galley & Head	7
Helm	8
Interior Cabin	8
Entertainment Equipment	8
Mechanical Equipment	9
Engine Room	9
Exclusions	10
Disclaimer	10
PHOTOS	11
Salon	11
Salon Looking Aft	11
Salon	11
Salon Stereo	11
Salon TV	11
Salon TV	11
Wet Bar	12
Upper Salon Refrigerator	12

Distribution Panel	12
Bottle Storage	12
Galley Looking Down	12
Galley	12
Galley	13
Galley	13
Microwave	13
Galley Sink	13
Galley Refrigerator	13
Master Stateroom	13
Master Stateroom	14
Master Stateroom	14
Master Stateroom	14
Master Head	14
Master Head Sink	14
Master Head Shower	14
Aft Stateroom Beds	15
Aft Stateroom Beds	15
Aft Stateroom Beds	15
Aft Stateroom Head	15
Aft Stateroom Shower	15
Helm	15
Helm Port	16
Helm Starboard	16
Bow Looking Aft	16
Helm Seat	16
Aft Seating	16
Aft Lounge Seating	16
Aft Lounge Seating	17

Stern	17
CONTACTS	18
Contact details	18
Telephones	18
Office hours	18
Address	18

SPECIFICATIONS

Overview

When considering a “Condo on the Water” look no further than this beautiful 2012 Cruisers 41 Cantius. Cruisers Yachts has taken feedback from their customers and created a boat that can please almost any type of boater. The sliding back doors into the salon replace zipping canvas and isinglass. The atrium style salon to galley entrance doesn't separate anyone from being down below. Natural lighting fill the cabin and galley so there is no dark cabin feel. Da boat is equipped with some of the best technology offered in the industry today. Volvo IPS500 engines give you a comfortable 25 knot cruise while the joystick takes any complexity out of docking the yacht.

Da Boat is already equipped with twin Garmin 5208 touch screens monitors at the helm for radar, chart plotting and bottom sounding. The Garmin auto pilot makes any long passage a breeze when cruising. With less than 100 hours, full electronic package including SAT TV, and stored inside a rack since new, DA Boat offers a unique buying opportunity that no other 41 Cantius can offer. Also custom to Da Boat, is the more desirable aft lounge seat found on all new 2014's. Barely used and always cared for, it is clear Da Boat rivals any new 41 Cantius, but for almost half the price!

- 2 Stateroom 2 head layout
- Volvo IPS500 with 90 hours!
- HIGH AND DRY INSIDE STORAGE SINCE NEW!!!!
- Tracvision SAT TV system
- Aft mechanically reclining lounge seat
- Full Garmin package
- Remaining warranty on Volvo IPS Engines and Pods
- Over \$50,000 in Cruisers upgraded options!

Basic Information

Category: Cruiser

Sub Category: Cabin Cruiser

Model Year: 2012

Year Built: 2012

Country: United States

Coast Guard #: 1246241

Vessel Top: Hardtop

Dimensions

LOA: 41' 0" (12.50m)

Beam: 13' 0" (3.96m)

Max Draft: 0' 11" (0.28m)

Speed, Capacities and Weight

Cruise Speed: 26 Kts. (30 MPH)

Cruise Speed RPM: 3350 Kts.

Max Speed: 30 Kts. (35 MPH)

Max Speed RPM: 3640 Kts.

Displacement: 25000 Pounds

Water Capacity: 75 Gallons

Holding Tank: 50 Gallons

Fuel Capacity: 300 Gallons

Accommodations

Total Cabins: 2

Total Berths: 3

Total Heads: 2

Hull and Deck Information

Hull Material: Fiberglass

Deck Material: Fiberglass Sandwich

Hull Configuration: Modified Deep Vee

Hull Color: Black

Hull Finish: Plastic

Hull Designer: KCS International

Engine Information

Engines: 2

Manufacturer: Volvo Penta

Model: IPS 500

Engine Type: Inboard

Fuel Type: Diesel

DETAILED INFORMATION

Hull & Deck

- **Mechanically reclining aft lounge seat -UPGRADE**
- Anchor Roller, Mooring Bit & Cleat
- Boarding Gate—Transom
- Bottom Paint, Anti-Fouling
- Bow Rail, Welded Stainless Steel
- Bulkhead & Door—FSR
- Cabin Walk-Around
- Cockpit electric grill
- Cockpit Carpeting
- Cockpit Shower (Hot/Cold)
- Dockside Water Inlet
- Drink Holders
- Fender Storage
- Fiberglass Cockpit, Self-Draining
- Gunwale Molding, Stainless Steel
- Fully Enclosed Helm & Upper Salon, Hardtop
- w/Sliding Sunroof, Tri Slide Helm Door, Power
- Accuated Starboard/Port Air Vents
- Hardware—Deck Cleats (Docking, Fender & Platform)
- Hatch—Bow w/Screen
- Rope Locker—Bow
- Seat, L-Shaped—Cockpit
- Seat, Starboard, Jump
- Chaise lounge seat forward deck
- Storage Transom
- Swim Platform, Extended, w/Boarding Ladder
- Windlass (Foredeck Foot Switch, Anchor, 30' of 5/16" Chain & 126' of 5/8" Line)
- Windshield Wipers w/Windshield Washer

Galley & Head

- Amtico flooring dark wenge
- Exhaust Fan—Head Compartments (2)
- Galley Countertop—Solid Surface
- Head Compartment—FSR Dual Entrance
- Head Compartment—ASR Private
- Head, Centrifuge Electric w/Holding Tank (2)
- Hot Water System, 11 Gallon/42 Liter

- Microwave Oven
- Refrigerator/Freezer, Electric—Galley
- Showers w/Sump Pump (2)
- Stove, Electric, 2 Burner
- Sink & Faucet w/Spray
- Vanity with sink

Helm

- **Twin Garmin 5208 Screens**
- **Garmin Autopilot**
- **Garmin 4kw HD Radar**
- **Garmin VHF 200**
- **KVH Tracvision M3 SAT TV System**
- Stereo control
- Compass
- Horn, Air
- Hourmeters (2)
- Spotlight, Remote
- Dashboard panel with remote switches

Interior Cabin

- Berth, Queen—Forward Stateroom
- Berth, Twin Bunks Aft Stateroom
- (Converts to Queen)
- Blinds—FSR
- Carpeting—Cabin
- Clothes Lockers, Cedar-Lined
- Doors & Bulkhead—FSR
- Duvets & Pillow Shams
- Mattress, Standard Therapeutic—FSR
- Windows—FSR Insert Glass
- Windows—Hull Port, FSR (2), ASR (2)

Entertainment Equipment

- MP3 Input Port
- Premium Stereo Package, Includes: (2) Cockpit Speakers, Amplifier & 10" Subwoofer
- Stereo Components—(2) Cockpit Speakers, (2) Salon Speakers & Helm Remote
- SAT TV, Upper Salon 26"

Mechanical Equipment

- Air Conditioner/Heater (40,000 BTU)
- Battery Charging System & Monitor,
- 50 Amp shore power cord
- Battery Isolator
- Battery Parallel Switch
- Bilge Coating, White—
- Bilge & Engine Room
- Bilge Pumps (3) w/High Water Alarm
- Blowers—Bilge
- Bonding System w/Transom Zinc Plate
- Bronze Seacocks & Thru-Hulls on all
- Underwater Fittings
- Carbon Monoxide Detectors (3)
- Dockside Wiring, 120V, 50 Amp, w/power
- Retractor Cord 50'
- Dockside Wiring, 220V, 50 Amp, w/power
- Retractor Cord 50'
- Fire Extinguisher, Automatic
- (w/Engine Shutdown—Diesel)
- Fire Extinguishers
- Fuel Over-ow Recovery System (EPA Cert.)
- Generator, Diesel (Kohler®) 13.5 kW 120V (w/Sound Shield)-**UPGRADE**
- Ground Fault Interrupter Outlet
- Lights—Bilge
- Lights—Cabin
- Lights—Cabin Side Boarding
- Lights—Cockpit Courtesy
- Lights—Navigational, International
- Master Panel, AC/DC w/Voltmeters & Function Indicators
- Propeller, Nibral
- Sea Water Strainers
- Steering System, Fly-by-Wire & Joystick Technology
- Steering Wheel, Tilt
- Trim Tabs, Electro-Hydraulic w/Zinc Plates on Flaps

Engine Room

- Twin Volvo IPS500 (370hp) engines w/88 hours (6/2/14)
- Kohler 13.5kw Generator
- Oil change system
- Algae-X Fuel conditioning system

- Battery bank

Exclusions

Owner's personal belongings.

Disclaimer

The Company offers the details of this vessel or yacht in good faith but cannot guarantee or warrant the accuracy of this information nor warrant the condition of the vessel. A buyer should instruct his representatives, agents, or his surveyors, to investigate such details as the buyer desires validated. This vessel or yacht is offered subject to prior sale, price change, or withdrawal without notice.

PHOTOS

Salon



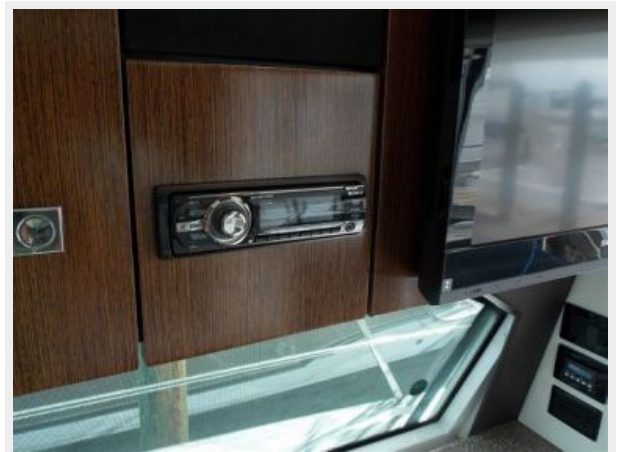
Salon Looking Aft



Salon



Salon Stereo



Salon TV



Salon TV



Wet Bar



Upper Salon Refrigerator



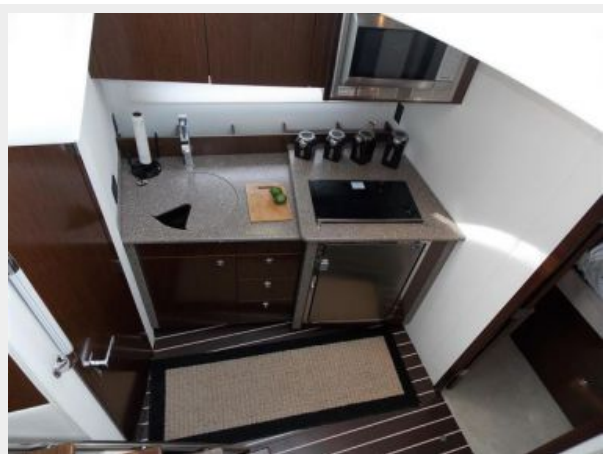
Bottle Storage



Distribution Panel



Galley Looking Down



Galley



Galley



Galley



Microwave



Galley Sink



Galley Refrigerator



Master Stateroom



Master Stateroom



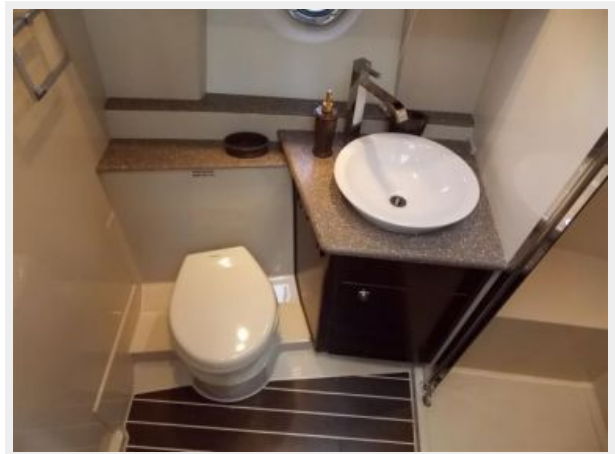
Master Stateroom



Master Stateroom



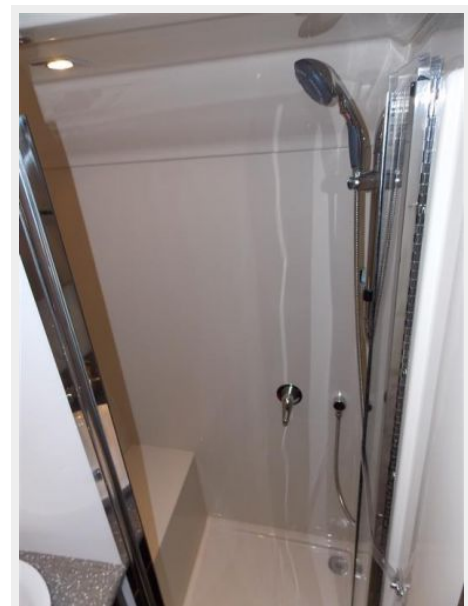
Master Head



Master Head Sink



Master Head Shower



Aft Stateroom Beds



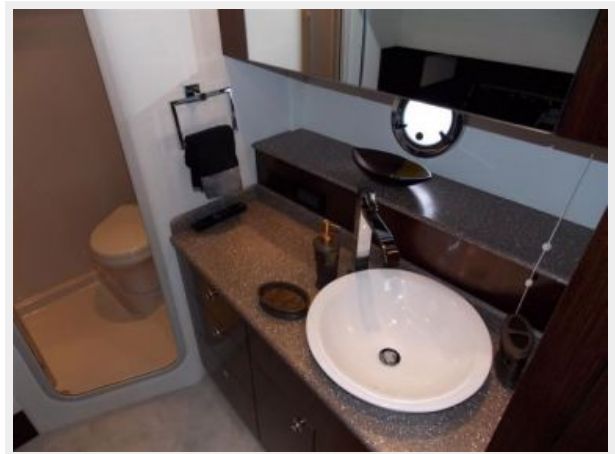
Aft Stateroom Beds



Aft Stateroom Beds



Aft Stateroom Head



Aft Stateroom Shower



Helm



Helm Port



Helm Starboard



Helm Seat



Bow Looking Aft



Aft Seating



Aft Lounge Seating



Aft Lounge Seating



Stern



CONTACTS

Andrey Shestakov, leading yacht broker of the sales department of Shestakov Yacht Sales Inc. Shestakov Yacht Sales Inc., the official representative of the Miami/Fort Lauderdale FL headquarters.

Contact details

Email: andrey@shestakovyachtsales.com

Web: shestakovyachtsales.com/en/

Telephones

USA: +1(954)274-4435

Office hours

Monday – Saturday: **9:00 - 21:00** EDT

Sunday: **closed**

Address



Harbour Towne Marina, 850 NE 3rd St,
STE 213, Dania, FL 33004