

ECSTASY — VIKING



Builder: VIKING

Year Built: 1987

Model: Motor Yacht

Price: PRICE ON APPLICATION

Location: United States

LOA: 41' 0" (12.50m)

Beam: 14' 8" (4.47m)

Max Draft: 4' 3" (1.30m)

Our experienced yacht broker, Andrey Shestakov, will help you choose and buy a yacht that best suits your needs **Ecstasy — VIKING** from our catalogue. Presently, at Shestakov Yacht Sales Inc., we have a wide variety of yachts available on our sale's list. We also work in close contact with all the big yacht manufacturers from all over the world.

If you would like to buy a yacht **Ecstasy — VIKING** or would like help answering any questions concerning purchasing, selling or chartering a yacht, please call **+1(954)274-4435**

TABLE OF CONTENTS

TABLE OF CONTENTS	2
SPECIFICATIONS	4
Basic Information	4
Dimensions	4
Speed, Capacities and Weight	4
Accommodations	4
Hull and Deck Information	4
Engine Information	5
DETAILED INFORMATION	6
Introduction	6
Galley	6
Salon	7
Master Stateroom	7
Guest Stateroom	7
Head	8
Flybridge	8
Deck Equipment	8
Cockpit	9
Engine & Mechanical	9
Electronics	9
Exclusions	10
Disclaimer	10
PHOTOS	11
Bow, on the hard	11
Cockpit, looking down	11
Hull gelcoat glistens	11
Stern	11
Galley	11

Galley	12
Galley Sink & Cabinets	12
Refrigerator	12
Galley stove and microwave	12
Entertainment Center	13
Salon	13
Salon	13
Salon	13
Salon	13
Salon	13
Salon Entry	14
Salon	14
Salon Ice Maker	14
Salon Sofa and Table	14
Head sink and counter	14
Salon TV	14
Sink and tackle center	15
CONTACTS	16
Contact details	16
Telephones	16
Office hours	16
Address	16

SPECIFICATIONS

Basic Information

Category: Motor Yacht

Sub Category: Convertible

Model Year: 1987

Year Built: 1987

Country: United States

Vessel Top: 2363

Fly Bridge: Yes

Cockpit: Yes

Dimensions

LOA: 41' 0" (12.50m)

Beam: 14' 8" (4.47m)

Max Draft: 4' 3" (1.30m)

MFG Length: 41' 0" (12.50m)

Speed, Capacities and Weight

Displacement: 32000 Pounds

Water Capacity: 125 Gallons

Fuel Capacity: 430 Gallons

Accommodations

Total Cabins: 2

Total Berths: 4

Sleeps: 6

Total Heads: 1

Hull and Deck Information

Hull Material: Fiberglass

Engine Information

Engines: 2

Manufacturer: J & T

Model: 671 T1

Engine Type: Inboard

Fuel Type: Diesel

DETAILED INFORMATION

Introduction

Times are changing - owner relocating - winter storage paid for - this boat needs to go NOW! This is a one owner boat that has been very well maintained over the years. It shows pride of ownership from its original owner and she shows like no other. Viking had a nice run with this ever so popular model from 1983 to 1989. This layout has the desirable two stateroom configuration. The forward stateroom boasts a queen sized berth, an overhead hatch for ambient lighting, a hanging locker and plenty of drawer space everywhere. The interior wood throughout the boat is stunning Teak and is in wonderful condition. The galley has a full sized standup refrigerator, a stainless steel sink, a three burner cook top and a microwave.

Just opposite is the second stateroom which has the over under bunks for your guests. The salon is very comfortable and has a nice feel to it. As you walk in to starboard there is an L-shaped sofa with a pullout and plenty of storage below. To port is a cabinet that houses an icemaker. Just forward is a barrel chair that you can place where you want. The forward cabinetry holds the entertainment system and storage for your media. The cockpit is very spacious for you and your fishing buddies or a place to gather with friends. The side decks have nice hand holds and a bow railing that makes walking up to the bow a breeze. The bow has chocks for the dinghy, a windlass and anchor chute. If you are in the market for a convertible in this range, you owe it to yourself to check her out. She shows like a boat that is 10 or more years newer than her age suggests.

Galley

The galley is very well equipped to prepare a nice meal or a quick snack to go. The full sized standup refrigerator has ample room to store your cold goods and the cabinets will hold the rest. The counter top gives you room to spread out and prepare a meal. There is a three burner cook top and a microwave.

- New full size refrigerator
- Stainless steel sink with storage below
- Princess 3-burner cooktop
- Sharp Carousel II microwave
- Teak and holly galley sole
- Water tank level gauge
- Galley exhaust fan
- Galley drawers
- Ample storage throughout

Salon

As you enter the salon there is an L-shaped sofa to starboard with pullout & additional storage under the aft cushion. To port is an cabinet that houses an icemaker. Just forward is a comfortable barrel chair. The forward cabinetry is beautiful and contains the TV and entertainment system as well as additional storage for your media.

- New carpet
- Engine room access
- Ships electrical panel
- Mini Levelor blinds
- Teak hi-low table
- Sony AM/FM stereo/CD
- 13" TV
- RCA cassette
- Dry out bilge pump switch
- Generator with remote start and stop panel
- Barrel chair
- Throw pillows
- SMX AC controls

Master Stateroom

The master stateroom is forward in the bow. It has private access to the head and shower.

- Centerline queen berth with new shams and storage
- Overhead hatch with screen
- TV/VCR combo
- Hanging locker
- Storage shelves
- (2) Reading lamps
- Toshiba 13" TV with VCR
- AC with SMX controls
- Stereo throughout
- Carpet
- Full length mirror
- Access to rope locker

Guest Stateroom

The guest stateroom is on the port side across from the galley.

- Upper and lower berths

- Hanging locker
- (2) Reading lamps
- Overhead lighting
- Overhead hatch
- Carpet
- Mirror

Head

The head is conveniently located between the two staterooms and has access from the galley.

- Avonite counter & sink
- Teak vanity with storage
- Tile linoleum floor
- Electric saltwater head
- Exhaust fan
- Separate stall shower

Flybridge

- The head is conveniently located between the two staterooms and has access from the galley.
 - Avonite counter & sink
 - Teak vanity with storage
 - Tile linoleum floor
 - Electric saltwater head
 - Exhaust fan
 - Separate stall shower

Deck Equipment

- Windlass
- Bottom painted blue
- Outriggers
- 3-Blade nibrals props
- Rod holders
- Blue boot top
- Stainless bow rail
- Blue accent stripes
- Air horns
- (2) 110v Spreader lights

- (2) Foredeck hatches
- (2) 12v Spreader lights

Cockpit

- Stainless bridge ladder
- Cockpit sink with faucet
- Cockpit canvas
- Cockpit freezer
- (2) Pullout fish boxes
- Manual pull for fire system
- Swim platform with ladder
- Dockside water
- Saltwater washdown
- 12v Cockpit spreader lights
- Halsey pipes for lines and shore cords

Engine & Mechanical

- Fuel and oil filters remote mounted to inboard side
- Oil change system
- Exhaust risers
- 8kw Kohler generator
- Dual fuel filters
- Hot water heater
- AC units recently serviced
- Glendinning synchronizer
- Battery switches
- Separate generator battery
- (2) 8D batteries main engines
- High water alarm
- (3) Bilge pumps

Electronics

- Furuno 1850 GPS plotter
- Furuno 4kW radar
- Northstar Loran
- AM/FM Stereo on flybridge
- Cetrek autopilot
- Furuno fishfinder/depthsounder

- (2) VHF radios
- Intercom w/hailer
- EPIRB

Exclusions

Owner's personal belongings.

Disclaimer

The Company offers the details of this vessel or yacht in good faith but cannot guarantee or warrant the accuracy of this information nor warrant the condition of the vessel. A buyer should instruct his representatives, agents, or his surveyors, to investigate such details as the buyer desires validated. This vessel or yacht is offered subject to prior sale, price change, or withdrawal without notice.

PHOTOS



Bow, on the hard



Cockpit, looking down



Hull gelcoat glistens



Stern



Galley



Galley



Galley Sink & Cabinets



Refrigerator



Galley stove and microwave



Entertainment Center



Salon



Salon



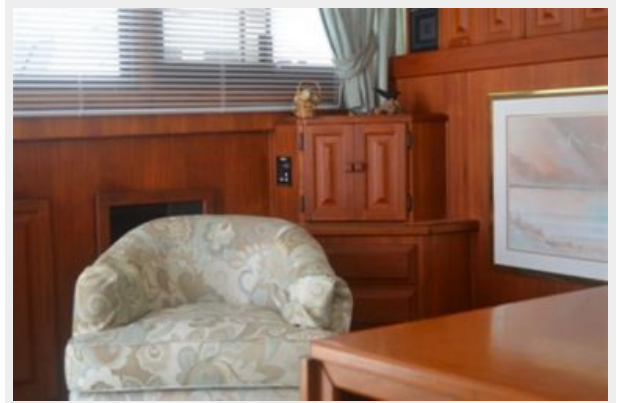
Salon



Salon



Salon



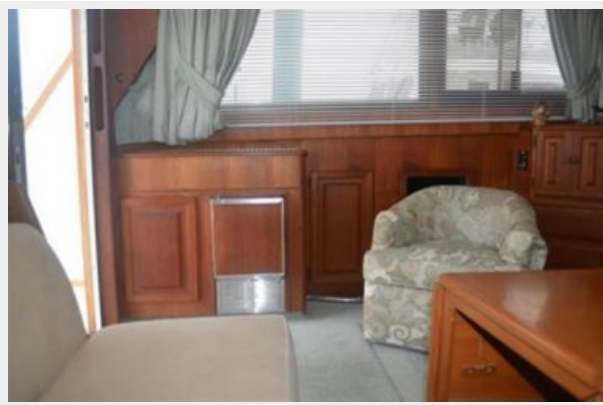
Salon Entry



Salon



Salon Ice Maker



Salon Sofa and Table



Salon TV



Head sink and counter



Sink and tackle center



CONTACTS

Andrey Shestakov, leading yacht broker of the sales department of Shestakov Yacht Sales Inc. Shestakov Yacht Sales Inc., the official representative of the Miami/Fort Lauderdale FL headquarters.

Contact details

Email: andrey@shestakovyachtsales.com

Web: shestakovyachtsales.com/en/

Telephones

USA: +1(954)274-4435

Office hours

Monday – Saturday: **9:00 - 21:00** EDT

Sunday: **closed**

Address



Harbour Towne Marina, 850 NE 3rd St,
STE 213, Dania, FL 33004