

# 50FT 1987 CHRIS-CRAFT 501 MOTORYACHT — CHRIS CRAFT



**Builder:** CHRIS CRAFT

**Year Built:** 1987

**Model:** Motor Yacht

**Price:** PRICE ON APPLICATION

**Location:** United States

**LOA:** 50' 0" (15.24m)

**Beam:** 15' 5" (4.70m)

**Max Draft:** 4' 6" (1.37m)

**Cruise Speed:** 16 Kts. (18 MPH)

**Max Speed:** 19 Kts. (22 MPH)

Our experienced yacht broker, Andrey Shestakov, will help you choose and buy a yacht that best suits your needs 50ft 1987 Chris-Craft 501 Motoryacht — CHRIS CRAFT from our catalogue. Presently, at Shestakov Yacht Sales Inc., we have a wide variety of yachts available on our sale's list. We also work in close contact with all the big yacht manufacturers from all over the world.

If you would like to buy a yacht 50ft 1987 Chris-Craft 501 Motoryacht — CHRIS CRAFT or would like help answering any questions concerning purchasing, selling or chartering a yacht, please call +1(954)274-4435

---

# TABLE OF CONTENTS

---

TABLE OF CONTENTS	2
SPECIFICATIONS	3
Basic Information	3
Dimensions	3
Speed, Capacities and Weight	3
Accommodations	3
Hull and Deck Information	3
Engine Information	4
DETAILED INFORMATION	5
Inside Equipment	5
Electrical Equipment	5
Electronics	5
Exclusions	5
Disclaimer	5
PHOTOS	6
CONTACTS	12
Contact details	12
Telephones	12
Office hours	12
Address	12

---

# SPECIFICATIONS

---

## Basic Information

---

**Category:** Motor Yacht

**Sub Category:** Flybridge

**Model Year:** 1987

**Year Built:** 1987

**Country:** United States

## Dimensions

---

**LOA:** 50' 0" (15.24m)

**Beam:** 15' 5" (4.70m)

**Max Draft:** 4' 6" (1.37m)

## Speed, Capacities and Weight

---

**Cruise Speed:** 16 Kts. (18 MPH)

**Max Speed:** 19 Kts. (22 MPH)

**Displacement:** 49000 Pounds

**Water Capacity:** 260 Gallons

**Fuel Capacity:** 778 Gallons

## Accommodations

---

**Total Cabins:** 3

**Total Berths:** 4

**Total Heads:** 3

## Hull and Deck Information

---

**Hull Material:** Fiberglass

---

## Engine Information

---

**Engines:** 2

**Manufacturer:** Detroit Diesel

**Model:** 6V92TA

**Engine Type:** Inboard

**Fuel Type:** Diesel

---

## DETAILED INFORMATION

---

### Inside Equipment

---

Washing machine Battery charger Microwave oven Electric bilge pump Heating Electric head Air conditioning Hot water Refrigerator Chemical head Marine head Oven

### Electrical Equipment

---

Onan generator Shore power inlet

### Electronics

---

Navigation center DVD player Autopilot Radar Log-speedometer Depthsounder CD player TV set VHF Compass Cockpit speakers GPS Radio Plotter

### Exclusions

---

Owner's personal belongings.

### Disclaimer

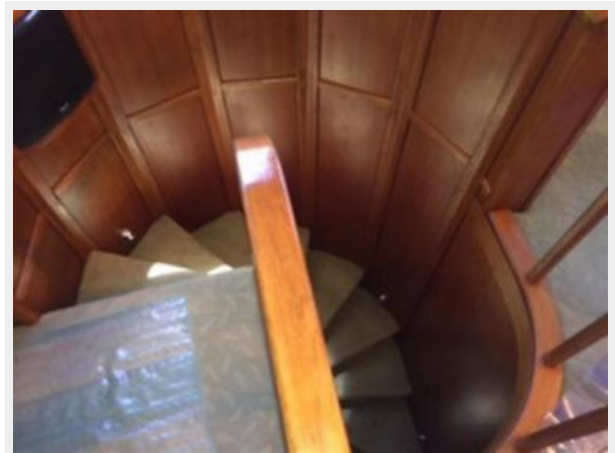
---

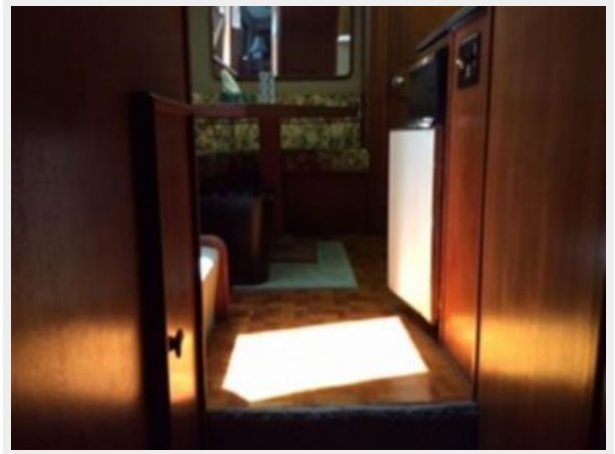
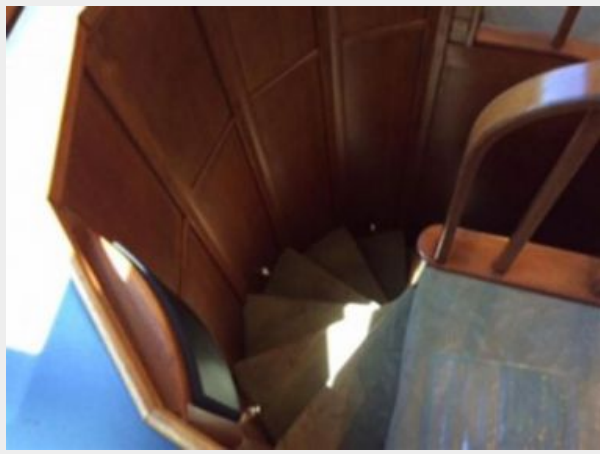
The Company offers the details of this vessel or yacht in good faith but cannot guarantee or warrant the accuracy of this information nor warrant the condition of the vessel. A buyer should instruct his representatives, agents, or his surveyors, to investigate such details as the buyer desires validated. This vessel or yacht is offered subject to prior sale, price change, or withdrawal without notice.

# PHOTOS

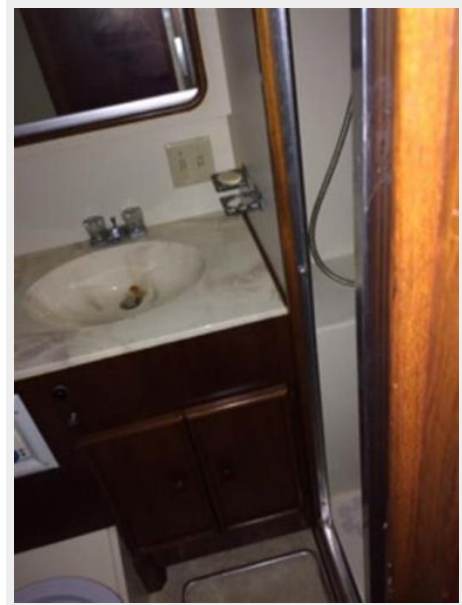
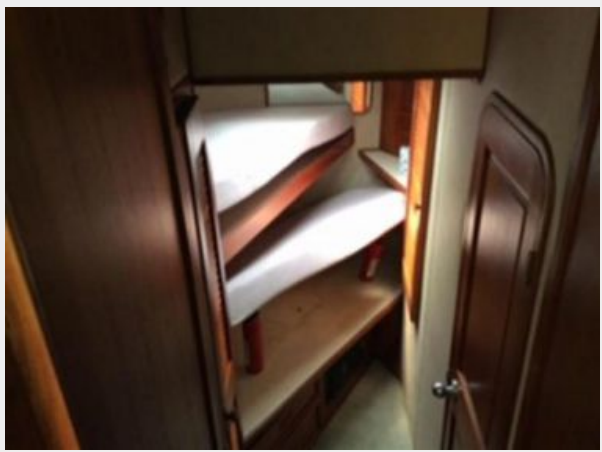
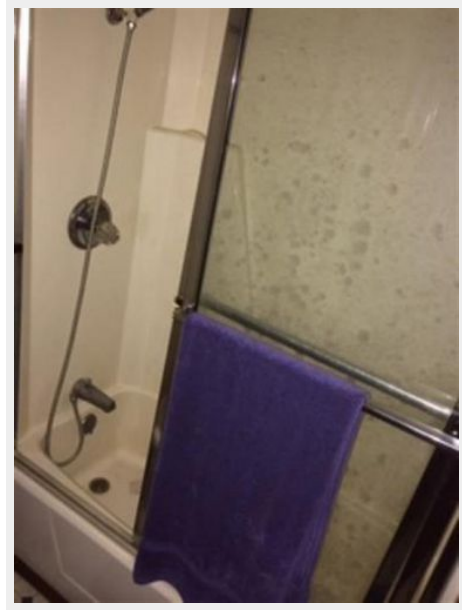
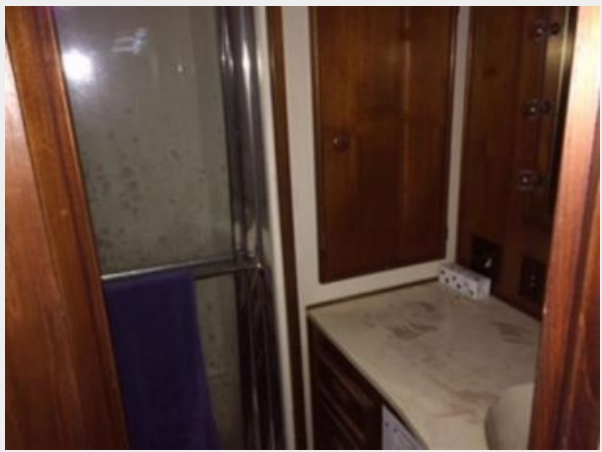




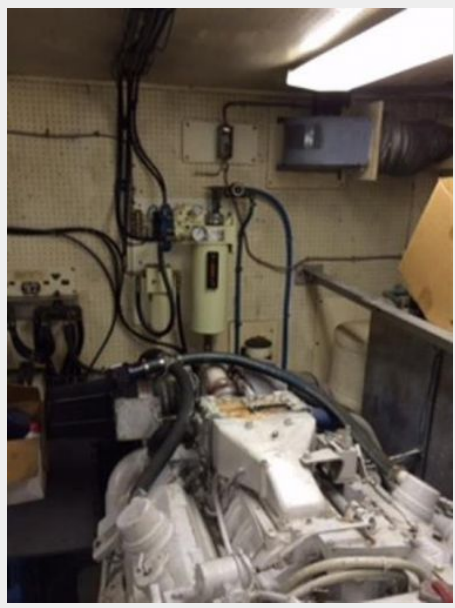












# CONTACTS

---

Andrey Shestakov, leading yacht broker of the sales department of Shestakov Yacht Sales Inc. Shestakov Yacht Sales Inc., the official representative of the Miami/Fort Lauderdale FL headquarters.

## Contact details

---

Email: [andrey@shestakovyachtsales.com](mailto:andrey@shestakovyachtsales.com)

Web: [shestakovyachtsales.com/en/](http://shestakovyachtsales.com/en/)

## Telephones

---

USA: +1(954)274-4435

## Office hours

---

Monday – Saturday: **9:00 - 21:00** EDT

Sunday: **closed**

## Address

---



Harbour Towne Marina, 850 NE 3rd St,  
STE 213, Dania, FL 33004