

## 2008 SEA RAY 38 SUNDANCER — SEA RAY



**Builder:** SEA RAY

**LOA:** 38' 0" (11.58m)

**Year Built:** 2008

**Model:** Cruiser

**Price:** PRICE ON APPLICATION

**Location:** United States

Our experienced yacht broker, Andrey Shestakov, will help you choose and buy a yacht that best suits your needs 2008 Sea Ray 38 Sundancer — SEA RAY from our catalogue. Presently, at Shestakov Yacht Sales Inc., we have a wide variety of yachts available on our sale's list. We also work in close contact with all the big yacht manufacturers from all over the world.

If you would like to buy a yacht 2008 Sea Ray 38 Sundancer — SEA RAY or would like help answering any questions concerning purchasing, selling or chartering a yacht, please call +1(954)274-4435

---

# TABLE OF CONTENTS

---

|                           |    |
|---------------------------|----|
| TABLE OF CONTENTS         | 2  |
| SPECIFICATIONS            | 3  |
| Basic Information         | 3  |
| Dimensions                | 3  |
| Accommodations            | 3  |
| Hull and Deck Information | 3  |
| Engine Information        | 3  |
| DETAILED INFORMATION      | 4  |
| Hull & Deck Features      | 4  |
| Cockpit Features          | 5  |
| Cabin Features            | 5  |
| Technical Features        | 7  |
| Exclusions                | 8  |
| Disclaimer                | 8  |
| PHOTOS                    | 9  |
| CONTACTS                  | 16 |
| Contact details           | 16 |
| Telephones                | 16 |
| Office hours              | 16 |
| Address                   | 16 |

---

# SPECIFICATIONS

---

## Basic Information

---

**Category:** Cruiser

**Model Year:** 2008

**Year Built:** 2008

**Country:** United States

## Dimensions

---

**LOA:** 38' 0" (11.58m)

## Accommodations

---

**Total Cabins:** 1

## Hull and Deck Information

---

**Hull Material:** Fiberglass

## Engine Information

---

**Engines:** 2

**Manufacturer:** Marine/Mercruiser

**Model:** Mercruiser 8.1 S HRZ

**Fuel Type:** Gas

---

# DETAILED INFORMATION

---

---

## Hull & Deck Features

---

- Bottom Paint
- Bow Rail, Stainless Steel w/Welded Stanchions, Intermediate Rails & Life Lines
- Canvas Colors (Blue, Black, Pewter)
- Cleats, Custom Sea Ray® Thru-Bolted - Stainless Steel (6)
- Deck Fill Plates, Stainless Steel
- Deck Rails, 316 Stainless Steel
- Drain Plugs, Brass-Threaded -Garboard
- Gel Coat, Arctic White
- Graphics, Striping
- Handrails, 316 Stainless Steel
- Hatch, Deck Vent - Translucent w/Locks & Sky Screen Cover (Trapezoid)
- Hull Windows, Stainless Steel (6 Fixed)
- Lights, Navigation
- Portlights, Stainless Steel (2 Fixed,2 Opening)
- Resin, High-Performance Vinylester
- Rub Rail, PVC w/Stainless-Steel Insert
- Storage Transom Wall (For Fenders & Gear)
- Stringer System - Fiberglass
- Swim Platform, Integral w/Concealed Stainless-Steel Four-Step Swim Ladder w/Integral Grab Handle
- Thru-Hull Fittings, Stainless Steel
- Toe Rail, Molded Fiberglass - Deck
- Vent System, Engine Room - Integral
- Windshield, Tempered/Tinted - Curved Glass w/Stainless-Steel Frame, Electric Front Vent & Stainless-Steel Supports
- Windshield Washer System
- Windshield Wipers w/Delay & Speed Control **Canvas (Sunbrella®):**
- Aft Curtain w/Bungee Cords
- Aft Sunshade
- Canvas Storage Bag
- Front Curtains
- Side Curtains **Windlass System:**
- Anchor, Galvanized
- Anchor Chute, Stainless Steel
- Anchor Rope/Chain Storage w/Gas-Assisted Hatch
- Anchor Washdown Spigot
- Windlass, Rope/Chain w/Foot Switches **Certifications:**
- Meets Applicable USCG & ABYC Standards
- NMMA Certification

- Mercury Installation Quality
- Certification (Gas Engines)

---

## Cockpit Features

---

- Beverage Holders (8)
- Carpet Liner, Snap-In
- Door, Cabin Entry - Acrylic
- Door, Transom
- Floor Liner, Fiberglass - Self-Bailing
- Handrails, 316 Stainless Steel
- Hardtop, Fiberglass w/Vent Hatch, Overhead Lighting & Aft Sunshade
- Hatch, Engine Room - Electrically Actuated
- Icemaker, 120V
- Lighting, Indirect
- Outlet, 12V Accessory
- Outlet, 120V GFI Protected
- Seating, Companion Bench w/Molded Fiberglass Storage Base & Euro-Style Backrest
- Seating, Helm w/Flip-Up Thigh-Rise Bolster, Armrests & Heavy-Duty Pedestal w/Slide, Swivel & Pneumatic
- Vertical Adjustment
- Seating, U-Shaped Aft w/Storage Below - Starboard
- Seating, L-Shaped Aft w/Storage Below - Port
- Ship's Bell
- Steps, Boarding (Molded-In)
- Storage, Side Panel
- Table, Cockpit w/Dedicated Storage
- Wet Bar w/Sink, Faucet Solid- Surface Countertop, Stainless- Steel Handrail, Trash Receptacle & Carry-On Cooler Storage - Port

---

## Cabin Features

---

- Blinds, Wood
- Carbon Monoxide Monitors
- Carpet, Masland® 55-Ounce 100%
- Stainmaster BCF Nylon w/Dupont®
- Advanced Teflon Repel System
- Carpet Runners, Interior (Sunbrella®)
- Curtains & Drape Trim
- Handrails, Stainless Steel

- Lighting, 12V Indirect
- Lighting, 12V Xenon
- Outlets, 12V Accessory
- Outlet, Phone
- Outlets, 120V GFI Protected
- Outlet & Switch Plates - Satin Nickel Finish
- Pillows, Accent
- Steps, Entryway - Wood
- Storage, In-Floor
- Wood Interior Finish (High Gloss) -
- Light Cherry or Dark Cherry **Salon:**
- Entertainment Center - Gaming System Port - MP3 Port w/12V Outlet - Stereo, Clarion® 12V AM/FM Single
- CD, Sirius® Satellite Receiver w/Antenna, 6-Disc CD Changer, Amplifier, Subwoofer, Speakers (8), Digital Cockpit Remote Control & Speaker Selector Switches - TV, 20" Flatscreen LCD (120V)
- Drop-Down w/Remote DVD Player
- Seating, Sofa w/Storage Below - Converts to Bed w/Filler Cushions (Ultraleather HP™)
- Storage, Gunwale Cabinets
- Table, Dinette w/High-Gloss Wood
- Surface and Dedicated Storage **Galley:**
- Coffeemaker, 120V
- Countertop, Solid Surface w/Sink,
- Single Lever Grohe® Faucet & Sink Cover
- Freezer, Over-Counter w/Stainless-
- Steel Front - Dual Voltage 120V/12V
- Handrail, Stainless Steel
- Microwave w/Stainless-Steel Front - 120V
- Power Vent, 12V w/Stainless- Steel Grill
- Refrigerator, Under-Counter w/Stainless-Steel Front - Dual Voltage 120V/12V
- Storage, Drawers w/Cutlery Insert
- Storage, Upper & Lower w/Designated Plate & Glass Storage
- Stove, Two-Burner (Surface Mounted) w/Safety Rail - 120V
- Trash Receptacle w/Chute & Solid -Surface Cover **Forward Stateroom:**
- Bed, Full-Size Island-Style w/Innerspring Mattress, Pillows, Sheets & Coordinated Spread
- Door, Privacy (Sliding Pocket)
- Hanging Locker w/Light & Shelf -Starboard
- Hanging Locker, Mirrored w/Light &
- Shelf - Port
- Mirrored Rope Locker Bulkhead
- Storage, Side Shelves
- TV, 15" Flatscreen w/DVD Player
- Forward Head - Port:
- Bathroom Tissue Holder

- Doors, Privacy - Access from
- Forward Stateroom & Salon
- Handrails, Stainless Steel
- Head, VacuFlush®
- Power Vent, 12V
- Robe Hook
- Storage, Medicine Cabinet - Mirrored
- Vanity w/Solid-Surface Countertop, Sink, Grohe® Faucet & Storage Below **Forward Shower - Starboard:**
- Curtain, Shower
- Door, Privacy - Access from Forward Stateroom
- Handrail, Stainless Steel
- Robe Hook
- Shower w/Seat & Adjustable Grohe
- Shower Wand **Mid-Berth:**
- Curtain, Privacy
- Portlight, Stainless Steel (Fixed)
- Seating, Conversation Pit - Converts to Double Berth w/Slide-Out Base
- Storage, Cabinet - Starboard

---

## Technical Features

---

- **Control Station:**
- Alarms, High-Water - Bilge & Cabin Compass
- Dash, Gel Coated - Nickel
- Emergency Start System - Engines
- Horns, Air (Concealed) - Dual Trumpe
- Instrument Panel, High-Gloss
- Power Steering, Hydraulic w/Tilt Wheel
- Shift & Throttle Controls - Electronic (Mercruiser® DTS)
- SmartCraft® Diagnostics: - Instrumentation, Custom Sea Ray® SmartCraft w/Low-Glare Blue Night Lighting & Chrome Bezels - 4-in-1 Multigauges (2) (Includes: Fuel Level, Oil Pressure, Voltmeter & Water Temperature) - Tachometers (2)
- SmartCraft® VesselView Display: - Propulsion: Engine Hour Meters,
- Engine Status, Performance and Fuel, Peak Performance, Boost Pressure (optional), Troll Control, Cruise Control - Vessel: Vessel Status, Tank Status, Steering Position, Generator Data and Start/Stop (Availability TBD) - Environment and Navigation: GPS Interface, Depth and Water Temperature, Depth Alerts, Trip Log Information, Fuel to
- Waypoint Data, Navigation Data - Active Alarms/Details - Alarm History/Details
- Switch Panel, High-Gloss (Backlit)
- Switches, Illuminated Weatherproof
- Rockers & Electronic Dimmer Control
- Electronics:

- Electronics Circuit, 50 Amp/12V
- VHF Radio w/Remote Speaker & 8' Fiberglass Antenna **Electrical Systems:**
- Batteries, (4) w/Trays
- Battery Charger/Converter, 120V/40 Amp/12V
- Battery Switches, 2-Way Solenoid
- Activated (MDP & Bilge)
- Cable TV System w/Inlet (Includes Phone Inlet), TV & Phone Shore
- Cords, Coax Outlets, Gain Control & Omni Directional Antenna Galvanic Isolators (2)
- Panel, DC Circuit Breaker - (Remote)
- Panel, DC Main Breaker
- Panel, Main Distribution - AC
- Panel, Main Distribution - DC
- Shore Power, Dual 120V/30 Amp w/50' Cords
- Wiring, Color-Coded w/Chafe Protection **Generator:**
- 7.3 kW Kohler® Low Emission - Gas (120V/60 Cycle) w/Sound Shield, Remote Start, Muffler, Closed Cooling, Fuel Filter, Seacock & Seawater Strainer **Air Conditioning/Heating:**
- Zone-Controlled Reverse-Cycle System (18,000 BTU)
- Custom Integral Vent System **Engine Room:**
- Bilge Pumps, 12V Automatic (2)
- Bilge Pumps, 12V Automatic High-
- Water (1 Bilge, 1 Cabin)
- Blowers, 12V Bilge (2)
- Exhaust, Underwater - Patented

---

## Exclusions

Owner's personal belongings.

---

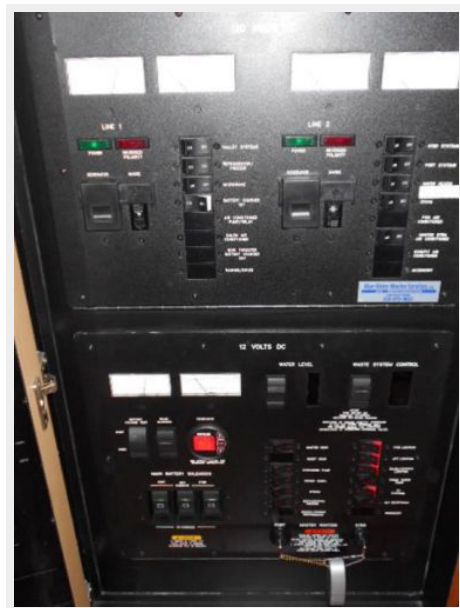
## Disclaimer

The Company offers the details of this vessel or yacht in good faith but cannot guarantee or warrant the accuracy of this information nor warrant the condition of the vessel. A buyer should instruct his representatives, agents, or his surveyors, to investigate such details as the buyer desires validated. This vessel or yacht is offered subject to prior sale, price change, or withdrawal without notice.



# PHOTOS

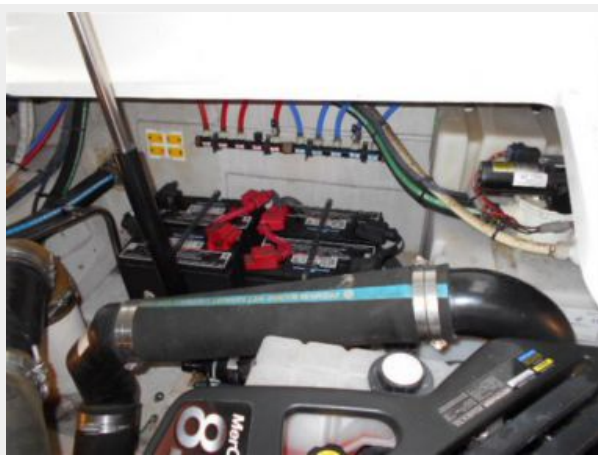














# CONTACTS

---

Andrey Shestakov, leading yacht broker of the sales department of Shestakov Yacht Sales Inc. Shestakov Yacht Sales Inc., the official representative of the Miami/Fort Lauderdale FL headquarters.

## Contact details

---

Email: [andrey@shestakovyachtsales.com](mailto:andrey@shestakovyachtsales.com)

Web: [shestakovyachtsales.com/en/](http://shestakovyachtsales.com/en/)

## Telephones

---

USA: +1(954)274-4435

## Office hours

---

Monday – Saturday: **9:00 - 21:00** EDT

Sunday: **closed**

## Address

---



Harbour Towne Marina, 850 NE 3rd St,  
STE 213, Dania, FL 33004