

SUNDOWNER — SILVERTON



Builder: SILVERTON

Year Built: 2000

Model: Motor Yacht

Price: PRICE ON APPLICATION

Location: United States

LOA: 39' 0" (11.89m)

Beam: 14' 1" (4.29m)

Max Draft: 3' 3" (0.99m)

Cruise Speed: 18 Kts. (21 MPH)

Max Speed: 24 Kts. (28 MPH)

Our experienced yacht broker, Andrey Shestakov, will help you choose and buy a yacht that best suits your needs **Sundowner — SILVERTON** from our catalogue. Presently, at Shestakov Yacht Sales Inc., we have a wide variety of yachts available on our sale's list. We also work in close contact with all the big yacht manufacturers from all over the world.

If you would like to buy a yacht **Sundowner — SILVERTON** or would like help answering any questions concerning purchasing, selling or chartering a yacht, please call **+1(954)274-4435**

TABLE OF CONTENTS

TABLE OF CONTENTS	2
SPECIFICATIONS	3
Overview	3
Basic Information	3
Dimensions	3
Speed, Capacities and Weight	3
Accommodations	4
Hull and Deck Information	4
Engine Information	4
DETAILED INFORMATION	5
Accommodations	5
Galley	5
Deck Equipment	5
Electronics	6
Mechanical	6
Additional Features	7
Exclusions	7
Disclaimer	7
PHOTOS	8
CONTACTS	13
Contact details	13
Telephones	13
Office hours	13
Address	13

SPECIFICATIONS

Overview

SUNDOWNER IS IN ABSOLUTE PRISTINE CONDITION BEING OWNED SINCE NEW BY A VERY KNOWLEDGABLE OPEN CHECKBOOK OWNER!

GORGEOUS 2000 SILVERTON 392 AFT CABIN MOTOR YACHT WITH LOW TIME ON DESIRABLE CATERPILLAR 350 HP DIESELS

(2) STATEROOM : (2) HEAD - ALL THE AMENITIES OF HOME!

UNIQUE SIDE DECK DESIGN FOR EASE OF MOVEMENT TO THE BOW MAKES FOR A VERY SAFETY CONSCIOUS DESIGN! SPACIOUS FLYBRIDGE AND AFT DECK, EXTREMELY LARGE INTERIOR !

Basic Information

Category: Motor Yacht

Sub Category: Aft Cabin

Model Year: 2000

Year Built: 2000

Country: United States

Dimensions

LOA: 39' 0" (11.89m)

Beam: 14' 1" (4.29m)

Max Draft: 3' 3" (0.99m)

Clearance: 16' 5" (5.00m)

MFG Length: 39' 2" (11.94m)

Speed, Capacities and Weight

Cruise Speed: 18 Kts. (21 MPH)

Max Speed: 24 Kts. (28 MPH)

Displacement: 25900 Pounds

Water Capacity: 100 Gallons

Holding Tank: 60 Gallons

Fuel Capacity: 288 Gallons

Accommodations

Total Cabins: 2

Total Heads: 2

Hull and Deck Information

Hull Material: Fiberglass

Engine Information

Engines: 2

Manufacturer: Caterpillar

Model: 3116

Engine Type: Inboard

Fuel Type: Diesel

DETAILED INFORMATION

Accommodations

2) STATEROOM (2) HEAD VESSEL WITH ALL THE AMENITIES OF HOME AND A VERY SPACIOUS AND COMFORTABLE INTERIOR OFFERED BY THE FULL BEAM SALON, LARGE ULTRA-LEATHER L-SHAPED SLEEPER SOFA LOUNGE IN SALON WITH ANOTHER L-SHAPED ULTRA-LEATHER DINING LOUNGE FORWARD.

GORGEOUS CUSTOM INTERIOR WITH AFT MASTER STATEROOM, CENTERLINE QUEEN BERTH AND PLENTY OF STORAGE (2) HANGING LOCKERS AND DRAWER STORAGE UNDER BERTH, ENSUITE HEAD WITH SEPARATE STALL SHOWER. GUEST STATEROOM FORWARD WITH CANTED QUEEN BERTH. ALSO WITH AMPLE STORAGE AND PRIVATE ACCESS TO "DAY HEAD" WITH SEPARATE STALL SHOWER

- SLEEPS 6 COMFORTABLY
- PULL OUT SOFA BED
- SAT TV
- ENTERTAINMENT CENTER IN SALON AFT TO PORT
- JVC TV
- JVC 5 DISC CD/DVD
- JVC RX-6000 RECEIVER
- PHILLIPS DVD/VCR
- TV/DVD : MASTER
- TV : GUEST

Galley

FORWARD TO STBD AND SUNKEN ONE STEP FROM MAIN SALON OFFERING A FEELING OF SPACIAL SEPARATION : PLENTY OF CABINET AND DRAWER STORAGE : LARGE DINETTE ACROSS TO PORT

- CORIAN COUNTERTOPS
- HARDWOOD FLOORING
- GOLD STAR MICROWAVE
- VITRIFRIGO UPRIGHT REFRIGERATOR FREEZER
- FORCE 10 (3) BURNER STOVE WITH OVEN

Deck Equipment

VERY SPACIOUS AFT DECK AND FLYBRIDGE. AFT DECK COVERED BY FIBERGLASS HARD TOP AND FLYBRIDGE COVERED BY CANVAS BIMINI TOP. BOTH AREAS FULLY

ENCLOSED WITH EISENGLASS AND PLENTY OF SEATING ON THE FLYBRIDGE. LARGE CAPTAIN AND COMPANION BENCH SEAT : ALSO BENCH SEAT FORWARD OF HELM. SIDEDECKS ARE ACCESSED FROM FLYBRIDGE: A VERY SAFE AND UNIQUE DESIGN : AMPLE EXTERIOR STORAGE AS WELL ON FLYBRIDGE AND AFT DECK

- STAINLESS STEEL BOW RAIL
- BOW PULPIT
- ANCHOR LOCKER
- WINDSHIELD COVER
- FORWARD BOWMAR HATCH
- WINDLASS WITH PLOW ANCHOR
- FRESH WATER WASHDOWN AT ANCHOR
- FENDER RACKS
- SWIM PLATFORM WITH LADDER
- HOT/COLD SHOWER
- BOWMAR TRANSOM ESCAPE HATCH
- AFT DECK CARPET
- STORAGE CENTER AT AFT DECK WITH ICE MAKER AND SINK
- RADAR MAST
- STORAGE LOCKER AT TRANSOM

Electronics

- SIDEPOWER BOW THRUSTER
- TRAC VISION 4 SAT TV SYSTEM
- RAYMARINE G 80 GPS & DEPTH SOUNDER
- RAYTHEON TRIDATA ST60 AUTOHELM SERIES
- RAYTHEON AUTOPILOT ST6000+
- RAYTHEON RL70C PATHFINDER RADAR
- RAYTHEON 210 VHF
- RITCHIE COMPASS
- ENGINE ROOM BLOWERS
- TRIM TABS
- BATTERY PARALLEL SWITCH
- FARIA GAUGES
- HORN
- 12V LIGHTER
- SPOT LIGHT

Mechanical

LARGE GENERATOR/STORAGE/PUMP ROOM ACCESSED THROUGH DINING AREA

FLOOR : PLENTY OF STORAGE SPACE HERE...HIGHLY DESIRABLE CATERPILLAR 350HP WITH ONLY 1064 HOURS!

- 50 AMP SHORE CORD SERVICE
- KOHLER 8KW GENSET
- RACOR FUEL WATER SEPARATORS WITH PRESSURE GAUGES
- OIL X-CHANGER SYSTEM
- FRESH WATER COOLING SYSTEM
- SEA STRAINER FOR MAIN ENGINES, GENSET, AND A/C'S
- PROTEC BATTERY CHARGER
- MACERATOR
- FUEL MANAGEMENT & SHUT OFF SYSTEM

Additional Features

SAFETY CONSCIOUS DESIGN. UNIQUE WALK-AROUND SIDE DECK DESIGN ALLOWING EASE OF MOVEMENT FORE AND AFT

- CENTRAL VACUUM SYSTEM
- (2) MARINE AIR AIR CONDITIONING SYSTEMS WITH REVERSE CYCLE
- HALON FIRE SUPPRESSION SYSTEM
- FULL EISENGLASS ENCLOSURE AT BRIDGE AND AFT DECK
- RIGID BOTOM INFLATABLE WITH 8HP NEW IN 2011
- HARDTOP OVER AFT DECK
- RADAR MAST

Exclusions

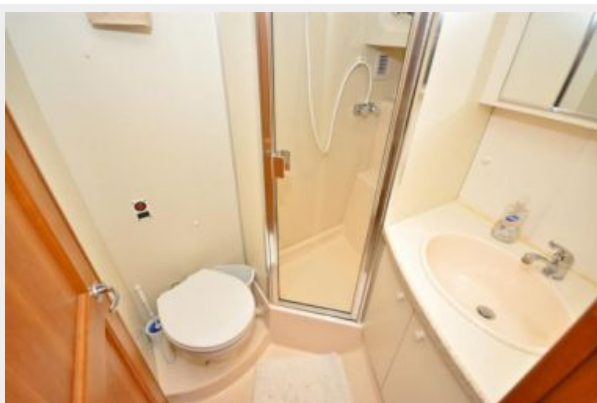
Owner's personal belongings.

Disclaimer

The Company offers the details of this vessel or yacht in good faith but cannot guarantee or warrant the accuracy of this information nor warrant the condition of the vessel. A buyer should instruct his representatives, agents, or his surveyors, to investigate such details as the buyer desires validated. This vessel or yacht is offered subject to prior sale, price change, or withdrawal without notice.

PHOTOS











CONTACTS

Andrey Shestakov, leading yacht broker of the sales department of Shestakov Yacht Sales Inc. Shestakov Yacht Sales Inc., the official representative of the Miami/Fort Lauderdale FL headquarters.

Contact details

Email: **andrey@shestakovyachtsales.com**

Web: shestakovyachtsales.com/en/

Telephones

USA: **+1(954)274-4435**

Office hours

Monday – Saturday: **9:00 - 21:00 EDT**

Sunday: **closed**

Address



Harbour Towne Marina, 850 NE 3rd St,
STE 213, Dania, FL 33004