

## STOP THE MADNESS — CARVER



**Судостроитель:** CARVER

**Год постройки:** 2006

**Модель:** Моторная яхта

**Цена:** **ЦЕНА ЯХТЫ ПО ЗАПРОСУ**

**Местонахождение:** United States

**Длина общая:** 36' 0" (10.97m)

**Ширина:** 12' 9" (3.89m)

**Мин. осадка:** 3' 1" (0.94m)

**Макс. осадка:** 3' 1" (0.94m)

Купить **Stop the Madness — CARVER** а также выбрать подходящую вам яхту из нашего каталога яхт вам поможет опытный яхтенный брокер Андрей Шестаков. На сегодняшний день компания **Shestakov Yacht Sales Inc.** имеет большое количество яхт в собственном списке продаж, а также тесно сотрудничает со всеми крупными яхтенными производителями по всему миру.

Для того чтобы купить яхту **Stop the Madness — CARVER** а также проконсультироваться по любому вопросу связанному с покупкой, продажей, чартером яхт позвоните по телефону **+7(918)465-66-44**.

# ОГЛАВЛЕНИЕ

ОГЛАВЛЕНИЕ	2
ХАРАКТЕРИСТИКИ	5
Обзор	5
Основная информация	5
Размеры	5
Скорость, вместимость и масса	5
Размещение	5
Корпус и палуба	5
Информация о двигателе	6
ПОДРОБНОЕ ОПИСАНИЕ	7
Key Features and Updates	7
Исключения	11
Отказ от ответственности	11
ФОТОГРАФИИ	12
Galley	12
Salon/Galley	12
Cabin Entry	12
Master Berth	12
Refrigerator	13
Dinette	13
Salon	13
Engine Access from Salon	13
Master Hanging Locker	14
Master Hanging Locker	14
Master Storage	14
Master Entertainment	14
Shower and Head	15
CD Player	15

Electrical	15
Helm	15
Helm	15
Helm Controls	15
Ice Maker	16
Helm Seat	16
Bilge	16
Hatch to Galley	16
Engine	17
Engine Room	17
Generator with Cover	17
Cockpit	17
Port Walkway	17
Starboard Walkway	17
Forward Bench Seat	18
Integral Steps to Cockpit	18
Flybridge	18
Flybridge	18
Windlass with Stainless Steel Anchor	18
Rod Holders	18
Bow	19
Starboard	19
Port	19
Port	19
Stern View	19
<b>КОНТАКТЫ</b>	<b>20</b>
Контактная информация	20
Телефоны	20
Время работы	20

Адрес

20

---

# ХАРАКТЕРИСТИКИ

## Обзор

This popular yacht has just undergone major services including a new bottom job, new isinglass, new bow thruster, new pumps for AC and water system, new heat exchangers, and current services on the engines and generator. The knowledgeable owner has taken excellent care of this vessel but is now a two boat owner and ready for the Mariner to go to a good home.

## Основная информация

**Тип судна:** Моторная яхта

**Модельный год:** 2006

**Год постройки:** 2006

**Страна:** United States

## Размеры

**Длина общая:** 36' 0" (10.97m)

**Ширина:** 12' 9" (3.89m)

**Мин. осадка:** 3' 1" (0.94m)

**Макс. осадка:** 3' 1" (0.94m)

## Скорость, вместимость и масса

**Водоизмещение:** 18800 Pounds

**Вместимость воды:** 75 Gallons

**Вместимость сточного бака:** 20 Gallons

**Объем топливного бака:** 250 Gallons

## Размещение

**Всего кают:** 1

**Всего ком. состава:** 1

## Корпус и палуба

**Материал корпуса:** Fiberglass

## Информация о двигателе

---

**Двигатели:** 2

**Производитель:** Crusader

**Модель:** 6.0

**Тип двигателя:** Inboard

**Тип топлива:** Gas/Petrol

# ПОДРОБНОЕ ОПИСАНИЕ

## Key Features and Updates

The 36 Mariner provides open air touring comfort with a bridge designed for entertaining and comfortable cruising with up to ten guests. This vessel will seat many from the forward seat to the cockpit and up to the huge bridge. Single level interior layout is a big plus for easy movement through the cabin. There is a queen island berth with real innerspring mattress, a separate shower stall in the head and a large refrigerator and freezer in the galley. There is dual access to the engines and mechanical equipment.

Full engine/transmission service was performed November 2012 including new heat exchangers impellers, belts, hoses, etc

- New Hi Pressure AC Pump, Dec 2013
- New Hi-Pressure Water Pump, Dec 2013
- New Top, Canvas and Isinglass, April 2013
- New Bow Thruster, Dec 2013
- New Bottom Paint, Dec 2013
- New Bilge Pumps, Dec 2013
- Stainless Steel Anchor

### Vessel Walk-Through

The 360 Mariner is an improved and updated version of Carver's famous 350 Mariner. This unique vessel features port and starboard molded stairs from the cockpit to the bridge. Everyone loves the bridge with her wide walk around and seating for 10-12 adults. The bridge is protected by a full bimini top with four sided enclosures. The double bench seat on the bow converts to a nice sun lounge with cushions. There is a huge storage compartment behind the bow seat. The bridge has bucket seats for the captain and mate. There are port and starboard bench seats with storage beneath. The wet bar and icemaker, plus galley hatch, make for easy entertaining.

Walking into the salon from the cockpit, you are greeted with a spacious, one level living area. To port is a convertible, L-shaped couch and to starboard is the dedicated, booth style dinette that also converts to a berth. Large windows and the sliding patio door provide lots of natural light and have privacy curtains. A well laid out galley is positioned to starboard and features a full size refrigerator with separate freezer, solid surface countertops, full size pantry and abundant storage. The master stateroom is located forward and features a privacy door, center line berth and private entry to the head. The large head features a separate shower stall, vanity and VacuFlush toilet. There is an entry from the salon companionway as well as the master stateroom.

### Salon and Dinette

- Entrance Door, Tinted Sliding Glass, Lockable, with Interior Screen and Curtains
- Entry Stairway, Carpeted With Solid Cherry Risers, Electrically Actuated To Provide Access to Forward Engine
- Lounge to Port, L-shaped, Converts to a Berth, with Storage Beneath
- Sole LCD TV
- Clarion DVD Player
- Clarion AM/FM/CD Stereo with Sirius Satellite
- Stereo Speakers
- Booth Style Dinette to Starboard Converts to Berth
- Table, Sapele Pommele Top With Raised Cherry Wood Trim, Adjustable Height
- Large Side Windows w/Curtains
- Carpet
- Cabinetry, Cherry Wood
- Storage Cabinets (2)
- AC/DC Distribution Panels

## Galley

- Full Size Refrigerator w/Separate Freezer
- Range, Electric, 2-Burner, Smooth Top
- Solid Surface Counter Tops
- Stainless Steel Sink, Deep Well Under-mounted
- Hatch - Translucent, Lockable, Pass-Through to Bridge
- Portlight, Opening
- Storage Cabinets and Drawers
- Pull Out Pantry
- Cherry Wood Finish
- Flooring - Wood Plank
- Dockside and Pressure Water
- Water Level Indicator

## Master Stateroom

The Master Stateroom is forward and on the same level as the salon and galley. It has an island berth and private access to the head.

- Solid Cherry Wood Entrance Door
- Berth, Island Queen, with Inner-spring Mattress
- Decorator Spread and Shams
- Berth Step-Ups (2) - Carpeted
- Carpet
- Hanging lockers (2) Lighted
- Locker w/Shelves
- Storage Cabinets Overhead, Port and Starboard
- Storage Drawers



- Flip Down Flat Screen TV with Stereo Speakers
- Reading Lights (2)
- Overhead Hatch, Tinted, Lockable, with Inside Screen and Exterior Cover
- Portlights (2), Fixed with Curtains
- Private Access to the Head
- Access Panel, Mirrored, On Forward Bulkhead, Provides Access to Anchor Chain Locker

## Head

The Head has two solid cherry entrance doors, one to the stateroom and one to the galley.

- Vanity, Solid Surface Top, Integral Sink, Cabinet Below
- Medicine Cabinet with Shelves, Mirrored Doors
- Toilet, Vacuum Flush, Pedestal
- Waste Level Indicator
- Separate Shower Stall with Integral Bench Seat
- Clear Acrylic Shower Door with Matching Sidelights, Bi-Fold
- Shower Head, Removable For Use as Hand-Shower
- Storage Cabinet with Shelves, Mirrored Doors
- Portlight with Privacy Glass
- Nonskid Sole

## Helm, Electronics and Navigation

- Dash, Molded Fiberglass
- Helm Cover
- Gauges and Instrumentation
- Dual Throttle and Shift Controls
- Raymarine C80 Plotter/GPS
- Raymarine Sirius Weather/Radio Module
- VHF
- Raymarine DSM 300 Depth Sounder
- Tilt Steering Wheel
- Bow Thruster Control (NEW Bow Thruster)
- Spotlight and Trim Tab Controls
- Rudder Angle Indicator
- Rocker Switch Controls
- Remote Stereo Control
- Compass
- Horn
- Helm Seat with Cover with Arms, Adjustable, Pedestal Base
- Companion Seat with Cover, Adjustable, Pedestal Base
- Glove Box
- Beverage Holders

## Bridge

- Lounge, Aft, Accommodates 5 with Cover
- Lounges (2) Triple-Wide, Port and Starboard, with Storage Beneath and Covers
- Wet Bar with Sink and Prep Surfaces
- Ice maker (NEW Dec 2013)
- Fiberglass Table which Swings out of the way
- Hatch, Translucent, Lockable, Pass-Through to Galley
- Bimini Top (NEW April 2013) with Full Isinglass Enclosure, including Rear Curtains
- Electronics Arch with Access Plates
- Beverage Holders
- Courtesy Lights
- Windshield, Painted Stainless Steel Frame and Side Vents

## Cockpit

- Hatches (3) - guttered, Provide Engine Room Access
- Padded Bolsters on Port and Starboard Weatherboards
- Overhead Extension Provides Sun/Weather Protection
- Courtesy Lights
- Side Deck Stairways with Stainless Steel Grab Rails
- Transom Door
- Storage Lockers (2) In Transom
- Transom Shower, Hot and Cold

## Deck and Hull Equipment

- Fresh Bottom Paint Dec 2013
- Bow Rails and Stanchions, Stainless Steel
- **Stainless Steel Anchor**
- Windlass with All Chain Anchor Rode
- Foredeck Lounge with Cover Converts to Sun Pad
- Beverage Holders (2), Fold-Out
- Remote Spotlight
- Boarding Ladder, Telescoping, Recesses into Boarding Platform

## Mechanical Equipment and Engine Room

- Crusader 6.0 375hp (2) Engines with V-drive Transmission
- Fire Suppression System, Automatic and Manual
- Engine Alarms, Temperature and Oil Pressure
- Bilge High Water Alarm
- Bilge Blowers
- Bilge Pumps (4) Manual and/or Automatic Operation
- Air Conditioning, 2-zone, 19,000 BTU, with Reverse Cycle Heat
- Dripless Shaft Logs

- Hydraulic Steering
- Oil Change System
- Waste Holding Tank with Dockside Pumpout
- Water Heater

## Electrical Equipment

- Batteries (4) - Deep Cycle, Marine (12v)
- Battery Chargers (2)
- External Connectors for Cable and Phone
- Generator, Kohler 7.3 kW
- Shore Power Connectors (2) 30 Amp
- Shore Power Cords (2)
- CO Detectors

## Exclusions

Owner's personal possessions

## Исключения

---

При продаже яхты исключаются личные вещи владельца.

## Отказ от ответственности

---

Компания предоставляет описание судна или яхты добросовестно, но не может гарантировать точность этой информации, а также не ручается за техническое состояние. Покупатель должен проинструктировать своих агентов или оценщиков исследовать представленную информацию более подробно, по собственному желанию. Продажа судна или яхты, изменение цены или снятие с продажи будет происходить без предварительного уведомления.

# ФОТОГРАФИИ

**Galley**



**Salon/Galley**



**Cabin Entry**



**Master Berth**



**Dinette**



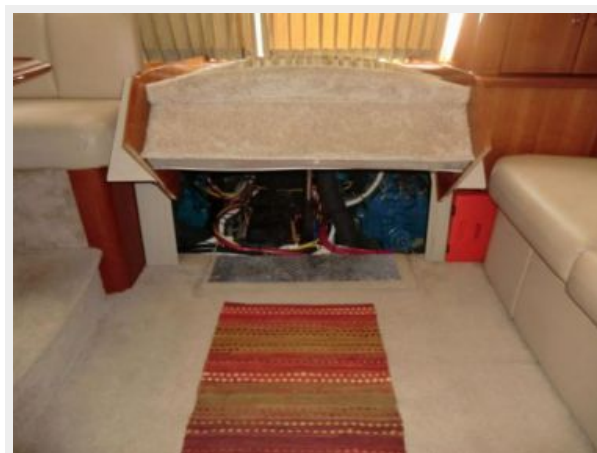
**Refrigerator**



**Salon**



**Engine Access from Salon**



**Master Hanging Locker**



**Master Hanging Locker**



**Master Storage**



**Master Entertainment**



### Shower and Head



### CD Player



### Electrical



### Helm



### Helm



### Helm Controls



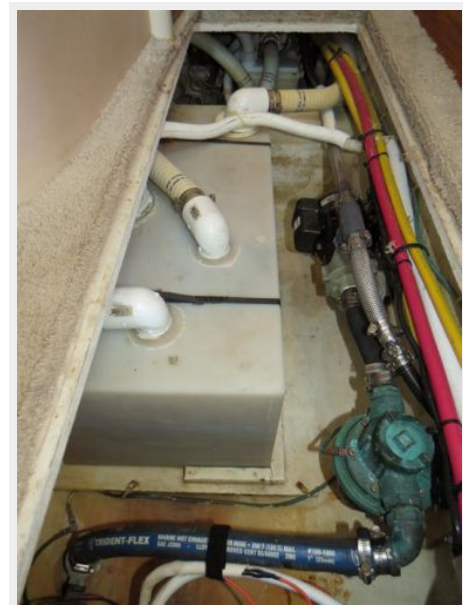
**Ice Maker**



**Helm Seat**



**Bilge**



**Hatch to Galley**





**Engine**



**Engine Room**



**Generator with Cover**



**Cockpit**



**Port Walkway**



**Starboard Walkway**



**Forward Bench Seat**



**Integral Steps to Cockpit**



**Flybridge**



**Flybridge**



**Rod Holders**



**Windlass with Stainless Steel Anchor**



**Bow**



**Starboard**



**Port**



**Port**



**Stern View**



# КОНТАКТЫ

---

Андрей Шестаков (Andrey Shestakov) – ведущий яхтенный брокер отдела продаж яхт и судов компании Shestakov Yacht Sales Inc. Официальный представитель Shestakov Yacht Sales Inc. для русскоговорящих клиентов в центральном офисе компании в Майами/Форт Лодердейл/Флорида/США.

## Контактная информация

---

Email: [andrey@shestakovyachtsales.com](mailto:andrey@shestakovyachtsales.com)

Web: [shestakovyachtsales.com](http://shestakovyachtsales.com)

## Телефоны

---

Краснодарский край: **+7(918)465-66-44**

США, Майами, Флорида: **+1(954)274-4435**

## Время работы

---

Понедельник – Суббота: **9:00 - 21:00**  
EDT

Воскресенье: **Закрето**

## Адрес

---



Harbour Towne Marina, 850 NE 3rd St,  
STE 213, Dania, FL 33004