

DORADO — OYSTER MARINE LTD



Судостроитель: OYSTER MARINE LTD

Год постройки: 2002

Модель: Крейсерская яхта

Цена: ЦЕНА ЯХТЫ ПО ЗАПРОСУ

Местонахождение: United Kingdom

Длина общая: 63' 4" (19.30m)

Ширина: 17' 8" (5.38m)

Мин. осадка: 8' 7" (2.62m)

Купить **DORADO — OYSTER MARINE LTD** а также выбрать подходящую вам яхту из нашего каталога яхт вам поможет опытный яхтенный брокер Андрей Шестаков. На сегодняшний день компания **Shestakov Yacht Sales Inc.** имеет большое количество яхт в собственном списке продаж, а также тесно сотрудничает со всеми крупными яхтенными производителями по всему миру.

Для того чтобы купить яхту **DORADO — OYSTER MARINE LTD** а также проконсультироваться по любому вопросу связанному с покупкой, продажей, чартером яхт позвоните по телефону **+7(918)465-66-44**.

ОГЛАВЛЕНИЕ

ОГЛАВЛЕНИЕ	2
ХАРАКТЕРИСТИКИ	4
Обзор	4
Основная информация	4
Размеры	4
Скорость, вместимость и масса	4
Размещение	4
Корпус и палуба	5
Информация о двигателе	5
ПОДРОБНОЕ ОПИСАНИЕ	6
Broker's Comments	6
Owner's Comments	6
Construction	7
Machinery	7
Electrical Systems	8
Plumbing Systems	10
Tankage	10
Navigation Equipment	11
Domestic Equipment	12
Accommodation	14
Deck Equipment	19
Исключения	23
Отказ от ответственности	23
ФОТОГРАФИИ	24
КОНТАКТЫ	31
Контактная информация	31
Телефоны	31
Время работы	31

Адрес

31

ХАРАКТЕРИСТИКИ

Обзор

Fab Rob Humphreys crustacean, still in her original ownership, never raced, rallied (apart from ARC 2002) or put away remotely wet. Totally blue water ready.

Основная информация

Тип судна: Крейсерская яхта

Подкатегория: Center Cockpit

Модельный год: 2002

Год постройки: 2002

Страна: United Kingdom

Размеры

Длина общая: 63' 4" (19.30m)

Длина по ватерлинии: 54' 11" (16.74m)

Ширина: 17' 8" (5.38m)

Мин. осадка: 8' 7" (2.62m)

Скорость, вместимость и масса

Водоизмещение: 73854.85777 Pounds

Вместимость воды: 422.6752832 Gallons

Объем топливного бака: 581.1785144
Gallons

Размещение

Всего кают: 5

Всего коек: 8

Всего ком. состава: 3

Корпус и палуба

Материал корпуса: GRP

Материал палубы: Teak

Отделка корпуса: Fiberglass

Дизайнер корпуса: Rob Humphreys &
Oyster Design Group

Информация о двигателе

Двигатели: 1

Производитель: Perkins

Модель: Sabre M225TI

Тип двигателя: Inboard

Тип топлива: Diesel

ПОДРОБНОЕ ОПИСАНИЕ

Broker's Comments

DORADO is a splendid blue water cruising yacht which was built for her current owner. She is his third Oyster and he had her built with a very high specification and she has many nice touches for comfortable cruising. Her teak interior is made from veneers selected from a single tree and the matching of the grain through the yacht is some of the best that we have seen. DORADO has been carefully maintained through life and has been updated as needed. Built by Southampton Yacht Services, her systems and layout are robust and well-conceived. She is ready for a new owner and new adventures.

Owner's Comments

DORADO has been located in the Caribbean and been our destination for the last ten winters for family holidays. My wife and I being the principle crew. In 2002 we completed the ARC in 14 days - the best 24-hour period being 240nm. The winds were mainly brisk but we limited our spinnaker use to daylight hours.

We have participated in a number of Oyster Caribbean regattas and achieved equal 1st place with Roulette in the 2004 BVI Regatta, only missing out on first place as Roulette had a better finish in the final race. Other results at Oyster BVI Regattas include 4th in Class 1 in 2006. In other words we have a fast boat.

Our routines have been to use DORADO for three periods of approx six weeks between mid-November to late April each year. When not on board, DORADO has been cared for by Island Dreams, a guardianage and boat management service in Grenada. In more recent years our island hops have become more localised. The current miles run is 21,000.

DORADO was affected by Hurricane Ivan, but fortunately the damage was only cosmetic and she was repaired by Woodstocks in Antigua. In 2010/11, all the under deck pumps, generator windings and all the AC wiring were replaced following problems with a burst water pipe.

DORADO is a wonderful boat, come and see it for yourself.

Construction

RCD Status: The yacht conforms with the essential safety requirements of Directive 94/25EC (Recreational Craft Directive) and is categorised A – “Ocean”

Hull, Deck & Superstructure Construction:

- GRP hull is laid up single skin with structural stringers and floors to Lloyds approved design specification.
- Hull colour white with cove line and double boot top lines in standard Oyster blue.
- Aft cabin hull area from waterline down covered with TB30 sound insulation material.
- The stern design incorporates a bathing platform trimmed with teak slats and folding stainless steel bathing ladder with oval teak treads. Stainless steel steps with oval teak treads for access to the stern deck.
- Deck structure moulded in GRP with balsa core.
- Teak laid decks.
- Oyster Deck Saloon profile with ‘eyebrow’ styling.
- The cockpit is split into two distinctive areas - the forward part for crew and guests, aft for the helmsman.
- Bulwark finished with gloss varnished teak capping rail with stainless steel fairleads, and scuff plates at side gates.

Keel & Rudder:

- High performance bulb (HPB) external lead keel.
- Fully protected skeg-hung rudder. Trust bearings and collar replaced 12/2008.

Machinery

Engine & Gearboxes:

- Perkins/Sabre M225Ti 6-cylinder turbo-charged diesel – max 165.5kW (225 HP) at 2500rpm. Last service October 2012 before winterization. Fuel injection system removed and serviced 4/2013.

Maintenance & Performance:

- Engine hours: approx 2,050 @ May 2012.

Propulsion & Steering:

- Whitlock torque rod system with a pair of remote pedestals, each incorporating a 1.2m diameter destroyer-type stainless steel wheel.
- Leather wheel cover to each wheel.
- Bruntons 27" Autoprop variable pitch propeller with Autolock shaft brake.
- Ambassador AM20 rope cutter on shaft.
- Sleipner 15hp tunnel bowthruster with joystick control.

Other Machinery:

- Lewmar Commander 400-4 system to operate headsail furling, staysail furling, mainsail furling and mainsail outhaul, with both hydraulic motors overhauled and new filters from 3/2013.

Electrical Systems

Voltage Systems:

- 24V Ship's DC supply.
- 220V AC ring main with double, 3-pin Clipsal outlet sockets located as appropriate within the layout.
- All AC wiring replaced in 2011 with US Marine Spec wiring (ie tinned)
- Other electrical sockets
- 12V socket at pedestal.
- 24V socket in focsle.
- 220V waterproof socket in liferaft locker.

Battery Banks:

- Domestic: Rolls 6CS25P Marine Batteries giving 820Ah, new in 2009.
- Engine start: 2 x 108Ah battery bank – new in 2011/2012.
- Generator start: 1 x 108Ah 12V battery – new in 2011/2012.

Battery Management:

- Mastervolt 100A chargers x 2.
- Mastervolt system factory overhaul in 3/2009.
- Magnetronic DCC4000 battery controller.
- Parallel 'emergency' link between engine start and domestic battery banks.

Alternators:

- Prestolite 175A alternator to charge domestic batteries, with Mastervolt Alpha regulator.
- 40A alternator to charge engine start batteries.

Generator:

- Westerbeke 12kW 50Hz/220V generator with sound shield. Generator engine changed 2006; new windings and major overhaul including new piston rings in 2010/2011; new starter motor from 2011, new wiring harness. Last service July 2012.
- Generator hours: engine approx 1,400 / windings approx 75.

Shore Power:

- 30A dockside power cable with Hubbell socket in transom.
- Additional 30A cable and Hubbell socket for air conditioning.
- Additional Hubbell socket for shore TV and phone connections.

Other Electrical:

- Mastervolt MASS 24V/2500W/220V sine wave inverter to feed all AC sockets, TV and microwave.

Plumbing Systems

Fresh Water & Water Heating System:

- From an insulated approx 64 litre tank heated by the engine's heat exchanger, or by thermostatically-controlled 220V, 2kW immersion heater elements powered by the generator or dockside power.
- Pressurised hot and cold freshwater system
- Seafresh charcoal filter at galley.
- Seawater inlets upgraded to a stainless steel manifold system via two inlets fitted with twin Aquafax filters.

Watermaker:

- Seafresh H208A watermaker (approx 126 litres/hour).

Bilge Pumps:

- Flojet electric bilge pump.
- Henderson MkV manual bilge pump.

Tankage

- Tank tender gauges.

Fuel:

- 2,200 litres approx (484 imp/581 US gallons) in two GRP tanks.

Fresh water:

- 1,600 litres approx (352 imp/423 US gallons) in two GRP tanks.

Grey/Blackwater holding tanks:

- Plastic gravity discharge holding tank to each heads, with Wema contents gauge and deck pump out.

Note: All grey water tank, fresh water, fuel transfer, bilge and Air Con circulation pumps replaced 2011.

Navigation Equipment

- SIRS Major 150mm flush-mounted compass on each pedestal.
- Raytheon RayNav 300 GPS with antenna mounted on davit arm.
- Raytheon R80CRC colour LCD radar and integrated chart plotter system at chart table, with 4kW Radome on mast.
- Raytheon RL70CRC colour LCD repeater at pedestal. In 3/2012 both radar/chart plotter screens returned to Raymarine for overhaul.
- HSB version software for both R80 and R70.
- Raytheon ST700 autopilot with repeater at port pedestal. Course computer upgraded to Raymarine 400 Gyro version.
- Windex at masthead.
- Nav 6 Plus.
- Raytheon Ray 230E D-DSC VHF radio with cell phone. Second VHF handset and speaker at steering pedestal. Hailer/horn on mast.
- Icom IC-M710 SSB with Meteocom software installed.
- Wide copper strip from chart table to lazarette and twin large ground plates as SSB earth and backstay insulators.
- Skanti Iridium cellphone.
- GSM tri-band antenna at masthead.
- Raytheon ST60 instruments as below, with ST60 remote control:

Port Pedestal:

- MFD.
- Wind speed/direction.
- ST7000 autopilot.

Starboard Pedestal:

- MFD.
- Wind speed/direction.
- Raytheon RL70CRC colour LCD repeater.

Chart Table:

- MFD.

Companionway console:

- Boat speed, wind speed/direction and depth plus MFD.

Domestic Equipment

General:

- Bosch WVF2000 washer/dryer in saloon.
- Oyster customised Wedgwood bone china crockery.
- Oyster customised Sheffield stainless steel cutlery.
- Two-brick safe.
- Heyco marine tool kit.
- A large selection of assorted spares, bulbs, pumps, tools and manuals.
- Deep sea fishing rod and tackle, lures etc

- Double set fitted sheets and bunk covers.
- Cooking and Galley equipment

Galley:

- Gimballed Force 10 FT60451 gas cooker in stainless steel with 4 burners, grill and oven.
- Panasonic NN-CD797M (2007) microwave.
- Twin stainless steel sinks with Seafresh charcoal filter fitted to water system.
- Fischer & Paykel Dishdrawer.
- Frigoboat 24V water-cooled refrigeration unit for galley, new from 11/2011, with single plate in refrigerator and two plates in the freezer.
- Frigomatic evaporator plate in cockpit table, with 24V compressor and keel cooling plate.

Heads/Showers:

- All WC's fitted with holding tanks.
- 3 x Jabsco Quiet Flush electric WC.
- Hot and cold freshwater deck shower in transom locker; Hozelock spigot inside shower box for freshwater deck wash hose.

Heating & Ventilation:

- Hella fans in saloon, galley, owner's stateroom and guest cabins. Twin deskhead fittings to rotate fans in forward cabins.
- Engine room fitted with 24V lighting and 2 x 24V extractor fans.
- 220V Cruisair reverse cycle system to all areas – 50/60Hz units.

Entertainment:

- Panasonic DEH-P4300R CD/DVD player in saloon with Yamaha AV amp, woofer and 5 x KEF surround sound speakers.

- Panasonic DEH-2300R stereo FM radio/CD player and speakers in owner's stateroom.
- Infra-red eye system for HiFi.
- Pair of BOSE 131 waterproof speakers in cockpit, new 2012.
- Phillips 4100 20" LCD TV mounted in locker by chart table.
- Sharp 14" multi-standard VHS TV in owner's stateroom tallboy.
- Status aerial for TV/FM recently installed.

Lighting (Interior):

- Downlight type halogen lights in polished chrome finish, with downlighters over reading areas.
- Reading light for each berth.
- Cantalupi Astor lights at vanity mirrors.
- Automatic light to drinks locker.
- Dimmer switches to saloon lighting.
- Red halogen light at chart table.

Lighting (Exterior):

- Boom light over cockpit table.
- Aqua Signal bow and stern navigation lights.
- Steaming/deck floodlight.
- Tri-colour anchor/navigation light at masthead.

Accommodation

Summary of Accommodation:

- Eight berths in five cabins, excluding the saloon, plus two occasional berths.
- Interior joinery finished in teak with Oyster 'Millennium' styling. Specially selected teak veneer sourced from a single log.

- Designed to be modern and co-ordinated, whilst remaining practical and durable at sea. Essential features include sculpted fiddles and grabrails, 'shadow-gap' joints between panels and Oyster custom knobs for lockers and drawers.
- 'Chequer-board' style teak cabin sole, with black perimeter line.
- Surfaces in galley, with upstands, in Velstone – colour 'Yukon Gold'.
- Counter tops in heads in Avonite – colour 'Fennel'.
- Headlining in off-white vinyl.
- Upholstery in Alcantara: saloon – 'Velvet Blue' reupholstered in 2012; seating and headboard in owner's stateroom and forward cabins - 'Celadron Green'.
- Lee screens on sea berths.
- Curtains to windows in all cabins.
- Oceanair Skyscreens to all deck hatches, except focsle deck hatch, which has a rollup cover attached with press studs.
- Flyscreens to all opening hull and coachroof ports.
- Foam vinyl day cover for saloon table. 2 portable folding seats for additional use around saloon table.

Description of layout from forwards:

Focsle Crew Cabin:

- Fixed lower berth with Pullman berth above with 2" foam mattress. Seat. Oilskin hanging locker with 220V low wattage tube heater at base of locker.
- Access to cabin via deck hatch or via the portside guest cabin.

Forward Guest Cabin:

- To port. Large single berth with twin mattresses - ideal for two children or as an occasional double berth.
- Victoria Marine flex batten system beneath upgraded mattresses.
- Hanging locker.

- Mirror on inner bulkhead.

En-suite Heads Compartment:

- With Jabsco Quiet Flush electric WC – freshwater flush but with ability to convert to seawater flush.
- Washbasin and separate shower stall.
- Pair of stainless steel swing hooks in shower for oilskins.
- Hansgrohe quality mixer taps and shower, with matching accessories.
- Lockers and mirror.

Double Guest Cabin:

- To starboard with double berth and hanging locker.
- Victoria Marine flex batten system beneath upgraded mattress.
- Mirror on inner bulkhead.

En-suite Heads Compartment:

- With Jabsco Quiet Flush electric WC – freshwater flush but with ability to convert to seawater flush.
- Washbasin and separate shower stall.
- Pair of stainless steel swing hooks in shower for oilskins.
- Hansgrohe quality mixer taps and shower, with matching accessories.
- Lockers and mirror.

Saloon:

- The light and airy saloon features an oval table and settee area to starboard.
- Table top in flamed teak grain with cream Avonite perimeter line, grabrail, and wine locker

stowage beneath.

- To port are a pair of comfortable, height adjustable, reading chairs, the forward of which can swivel to face the chart table, with fore and aft slider.
- Drinks locker with glass and bottle stowage.
- Bookcase to port hull port with movable U-dividers.
- Table lamp in port hull port.
- AV Yamaha receiver/amplifier and CD player stowed in locker to aft of port hull port.
- Bosch washer/dryer.
- Ample locker stowage to stbd with glasses locker with rotating fitting for easy access
- Access to the saloon from the companionway is down a set of shaped teak and stainless steel steps.
- Two teak grab handles are fitted either side of the companionway opening and in the deckhead.

Navigation Area:

- In the forward port area of the saloon, with forward-facing chart table and bookshelf.
- Sharp 20" LCD TV mounted in locker by chart table behind pair of slide-away style doors.
- TV is on locking, stainless steel, hinged bracket, with CD equipment stowed behind.

Galley:

- To port with gimballed Force 10 FT60451 gas cooker in stainless steel with 4 burners, grill and oven.
- Panasonic NN-CD797M (2007) microwave.
- Twin stainless steel sinks with Seafresh charcoal filter fitted to water system.
- Front-opening refrigerator with top-opening freezer.
- Fischer & Paykel Dishdrawer.
- Ample stowage in lockers and drawers.

Twin Midships Cabin:

- To starboard, with upper and lower berths and hanging locker.

Engine Room:

- Sound-insulated engine room with access via a door from the starboard midships cabin.
- Fitted with 24V lighting and 2 x 24V extractor fans.
- Automatic fire extinguisher.

Owner's Stateroom:

- With double berth offset from the centreline to port.
- Victoria Marine flex batten system beneath upgraded mattress.
- Dressing table and seat, large hanging locker and abundant drawer and locker space.
- Tallboy with Sharp 14" VHS TV installed and sliding doors.
- Bookcase to portside shelf with movable U-dividers.
- Access to the aft deck via an offset companionway to starboard, with a set of stainless steel and teak steps. Companionway hatch in smoked Perspex, with ply sliding blackout blind below, and Perspex washboard.

En-suite Heads Compartment:

- With Jabsco Quiet Flush electric WC – freshwater flush but with ability to convert to seawater flush.
- Washbasin and separate shower stall.
- Pair of stainless steel swing hooks in shower for oilskins.
- Hansgrohe quality mixer taps and shower, with matching accessories.
- Lockers and mirror.
- Heated towel rail.

Deck Equipment

Rig:

- Cutter rig.
- Hood Stoway, white-painted mast with hydraulic in-mast furling. Replacement of seal and oil in mast for worm drive for in-mast furling 6/2013.
- Hydraulic Flow control assembly valves 286 and 268 replaced in 3/2011.
- New Kevlar outhaul from 2012.. In boom piston removed for overhaul, new seals etc. from 6/2013.
- Navtec hydraulic vang with control panel in cockpit.
- Handheld remote control unit for in mast furling and outhaul
- Preventer eye on end of boom
- Twin Harken B503 12mm manual backstay tensioners.
- Pair of folding steps at masthead.
- Twin lightning dissipators at masthead and grounding to keel.
- Standing rigging continuous 1 x 19 stainless steel wire.
- Headsail furling: Reckmann hydraulic furling systems to headstay and inner stay, with new hydraulic pipes for Yankee from 2012.
- Spinnaker gear: Single, white-painted, carbon fibre spinnaker pole stowed vertically on mast; Package includes twin halyards in Spectra, topping lift and downhaul, sheets, guys and all required blocks and deck fittings.
- Firdell Blipper on mast.

Winches:

- By Lewmar, all with self-tailing rings in chrome:
- 2 x 66 CEST two speed electric drive, primary winches.
- 2 x 54 CST secondary winches.
- 1 x 54 CEST two speed, electric mainsheet winch behind port pedestal.

- 1 x 48 CST manual two speed, genoa and staysail halyard winch, mast-mounted.
- 1 x 48 CST manual two speed, main halyard winch, mast-mounted.
- 1 x 30 CST manual two speed, mainsheet traveller control line winch.

Sails:

- By Doyle Sails Barbados – new 2010 with 2 1/2 years warranty left:
- New Main and Staysail
- By Dolphin Sails:
- New 130% Yankee Dolphin Sails UK new 3/2013..
- 1.5oz MPS including squeezer.

General:

- Stainless steel pulpit, pushpit, and gateway midship stanchions. Gate to pushpit.
- Stainless steel grabrails on deck saloon roof.
- Stainless steel stowage for liferaft to be stowed vertically on transom.
- Stowage compartment, with removable partition, at forward end of anchor locker for kedge warp and chain stowage.
- Lazarette locker fitted with rack stowage, and twin stainless steel gas struts. Fitted with horizontal stainless steel bar for hanging ropes.
- Gas locker for two gas cylinders.
- Lewmar alloy-framed deck hatches.
- Gebo alloy-framed portlights in coaming.
- Two additional long portlights in cockpit.
- Gebo opening hullports.
- Cockpit table in varnished teak and stainless steel with folding leaves and refrigerated coolbox.
- Besenzoni 3m folding alloy passerelle.

- Custom stainless steel bathing ladder with teak treads with brackets for ladder to fit over bulwark.
- Oyster custom drop-down washboard system.
- Pair of stainless steel mug racks on each pedestal.
- Fishing rod holder.
- Nautool stainless steel gas barbecue fitted at aft port quarter.

Anchoring & Mooring Equipment:

- Stainless steel mooring and cockpit cleats. Mooring cleats upgraded to C-Quip polished stainless steel.
- CQR 34kg (75lb) anchor with 130m x 12mm chain.
- Bruce 20kg (44lb) kedge anchor with 100m warp plus 10m chain.
- Lewmar Ocean 3 vertical 24V electric anchor windlass. Snubber.
- Warps and fenders.

Covers, Canvas & Cushions:

- Custom stainless steel backrests at helm positions.
- Stern quarter pushpit seats in teak and stainless steel - cushions with Sunbrella Bahamas covers.
- Sprayhood to main companionway, with central zipped, roll-up window, and stainless steel grabrail to aft edge of sprayhood.
- Bimini with window at steering positions and below boom light, including cover for stowage. Major modifications to strengthen stainless steel bimini supports providing added safety. Zip-on side extension to act as either sun or weather shield.
- Extra strong bimini and second sprayhood for off season/lay up.
- 5 x Deck hatch covers, plus small cover for rear cabin access hatch.
- Cover to cockpit table with padded top and opening for access to refrigerated coolbox.
- Covers to pedestals and wheels.

- 2 x Covers for RIB.
- Canvas cover, with numerous clips, to protect varnished cap rail during lay-up.
- All canvaswork in Sunbrella – colour ‘Silver Grey’.
- Cockpit cushions with Sunbrella Bahamas covers.

Tender & Outboard:

- Whittall Impact 300 electric, long reach davits (max load 300kg), with lights below davit arms.
- Dinghy lifting point on boom end.
- Caribe RIB, new 2005 with Yamaha 40hp 4-stroke outboard motor, with major overhaul of engine, new battery and wiring – from 3/2013.

Safety Equipment:

- 6 x Safety harness clips in cockpit and behind pedestal.
- Lifeguard 8-person liferaft in canister, stowed on transom.
- McMurdo Rescue 406.
- Horseshoe lifebuoys with lights x 2.
- Jonbuoy inflatable danbuoy.
- Lifesling.
- Webbing jackstays.
- Wichard folding padeyes for cockpit harness points, plus two additional padeyes and helm positions.
- MOB button.
- Emergency tiller.

Fire-fighting equipment:

- Various including automatic fire extinguisher in engine bay.

- Gas detector in galley with bilge and cooker area sensors.

Исключения

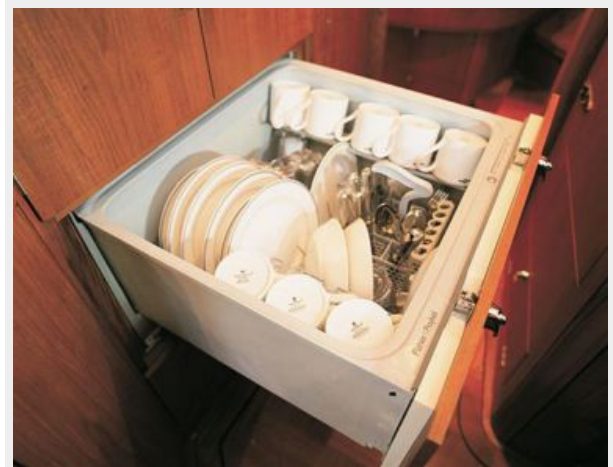
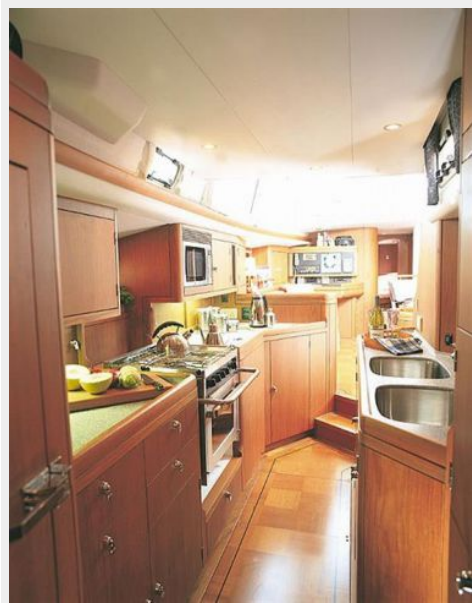
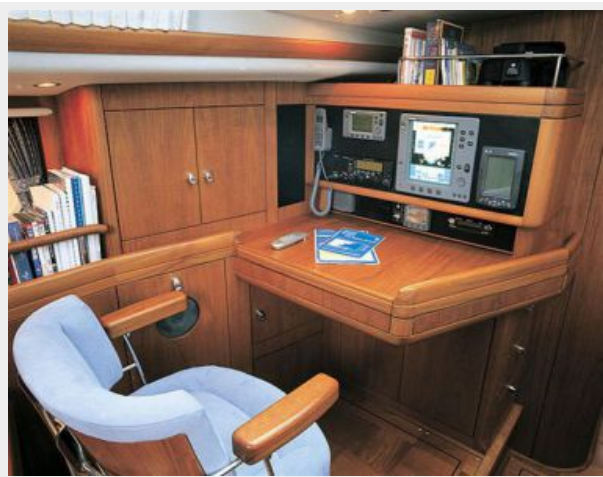
При продаже яхты исключаются личные вещи владельца.

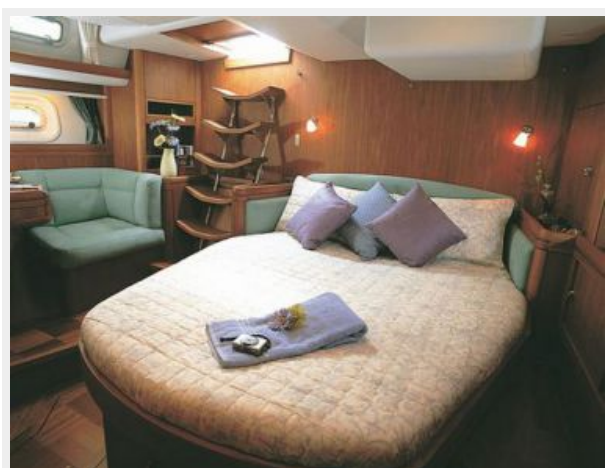
Отказ от ответственности

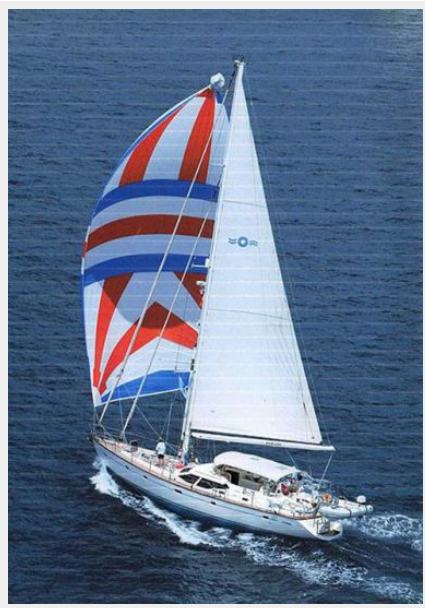
Компания предоставляет описание судна или яхты добросовестно, но не может гарантировать точность этой информации, а также не ручается за техническое состояние. Покупатель должен проинструктировать своих агентов или оценщиков исследовать представленную информацию более подробно, по собственному желанию. Продажа судна или яхты, изменение цены или снятие с продажи будет происходить без предварительного уведомления.

ФОТОГРАФИИ















КОНТАКТЫ

Андрей Шестаков (Andrey Shestakov) – ведущий яхтенный брокер отдела продаж яхт и судов компании Shestakov Yacht Sales Inc. Официальный представитель Shestakov Yacht Sales Inc. для русскоговорящих клиентов в центральном офисе компании в Майами/Форт Лодердейл/Флорида/США.

Контактная информация

Email: andrey@shestakovyachtsales.com

Web: shestakovyachtsales.com

Телефоны

Краснодарский край: **+7(918)465-66-44**

США, Майами, Флорида: **+1(954)274-4435**

Время работы

Понедельник – Суббота: **9:00 - 21:00**
EDT

Воскресенье: **Закрето**

Адрес



Harbour Towne Marina, 850 NE 3rd St,
STE 213, Dania, FL 33004