

BIG WAVE — HATTERAS



Builder: HATTERAS

Year Built: 1980

Model: Motor Yacht

Price: PRICE ON APPLICATION

Location: United States

LOA: 70' 0" (21.34m)

Max Draft: 4' 11" (1.50m)

Cruise Speed: 13 Kts. (15 MPH)

Max Speed: 17 Kts. (20 MPH)

Our experienced yacht broker, Andrey Shestakov, will help you choose and buy a yacht that best suits your needs **Big Wave — HATTERAS** from our catalogue. Presently, at Shestakov Yacht Sales Inc., we have a wide variety of yachts available on our sale's list. We also work in close contact with all the big yacht manufacturers from all over the world.

If you would like to buy a yacht **Big Wave — HATTERAS** or would like help answering any questions concerning purchasing, selling or chartering a yacht, please call **+1(954)274-4435**

TABLE OF CONTENTS

TABLE OF CONTENTS	2
SPECIFICATIONS	4
Basic Information	4
Dimensions	4
Speed, Capacities and Weight	4
Accommodations	4
Hull and Deck Information	4
Engine Information	5
DETAILED INFORMATION	6
Accommodations and Layout:	6
Galley	6
Engine Room and Mechanical Details	6
Electronics and Entertainment Equipment	7
Hull and Deck	8
Electrical	8
EXCLUSIONS	9
Remarks	9
Exclusions	9
Disclaimer	9
PHOTOS	10
Lower Helm	10
Lower Helm	10
Galley	10
Dinette	10
Salon looking aft	10
Salon looking forward	10
Formal dining	11
Wet Bar and Entertainment Components	11

Forward Guest/Crew Cabin	11
Office Area	11
Guest Stateroom 2	12
VIP Stateroom	12
Master Stateroom	12
Master Stateroom	12
Engine Room	12
Flybridge/Upper Helm	12
Flybridge	13
Flybridge looking forward	13
Novurania 13' Tender	13
Flybridge looking aft	13
Cockpit	13
Cockpit	13
Aft View/Cockpit	14
Foredeck	14
Bow Profile	14
Aft Profile	14
CONTACTS	15
Contact details	15
Telephones	15
Office hours	15
Address	15

SPECIFICATIONS

Basic Information

Category: Motor Yacht

Model Year: 1980

Year Built: 1980

Country: United States

Dimensions

LOA: 70' 0" (21.34m)

Max Draft: 4' 11" (1.50m)

Clearance: 26' 0" (7.92m)

Speed, Capacities and Weight

Cruise Speed: 13 Kts. (15 MPH)

Max Speed: 17 Kts. (20 MPH)

Water Capacity: 350 Gallons

Holding Tank: 225 Gallons

Fuel Capacity: 1670 Gallons

Accommodations

Total Cabins: 4

Total Heads: 4

Hull and Deck Information

Hull Material: Fiberglass

Engine Information

Engines: 2

Manufacturer: Detroit Diesel

Model: 12V71TI

Engine Type: Inboard

Fuel Type: Diesel

DETAILED INFORMATION

Accommodations and Layout:

Sleeps eight in four staterooms with four heads.

This flush deck motor yacht layout features a spacious wide body salon with a hi/lo dining table for six and opposing sofas aft. Forward to starboard is a wet bar with an entertainment system built-in. A centerline door aft accesses the cockpit. Beautiful teak paneling throughout the boat with new beige Berber low pile carpeting. Vinyl headliner throughout.

Forward of the salon is a dinette to starboard with a custom teak table, and a refurbished galley to port. The all white galley has plenty of counter space on the white tiled counter and a pass-thru to the salon.

Wheelhouse (with a bench seat and ladder to the flybridge) is forward of the galley/dinette and has teak and holly flooring. Wing doors access the side decks.

A stairway to starboard accesses an open space which is set up as an office. A stateroom featuring over/under bunks and head is to port. Forward and down two steps is a guest/crew cabin with over/under bunks and head. Aft from the open space and down two steps are the front-loading washer and dryer to starboard. Next aft is a VIP stateroom to port with twin lower beds. The VIP head is opposite, in the hall, to starboard. Continuing aft through this hallway (engine rooms on either side) is the master stateroom with a large, walk-in closet and vanity to port, head with tub starboard, and centerline king bed.

Galley

- Whirlpool refrigerator/freezer
- KitchenAid dishwasher 2011
- KitchenAid microwave/convection oven 2011
- GE microwave oven
- GE stove with 4-burner ceramic cooktop
- Garbage compactor
- Garbage disposal

Engine Room and Mechanical Details

- Air conditioning - Cruisair reverse cycle, SMX controls, 7 compressors
- Hynautic hydraulic engine controls

- Hynautic steering
- Naiad stabilizers
- Fresh water system (AC and DC pumps); new accumulator tank and stainless steel water heater
- Fuel transfer pump
- Oil change system for engines and gensets
- Trim tabs
- Racor fuel filters (twin FG1000s each main; single FG500 each genset)
- Fuel selector valve system for engines and gensets
- Sea Recovery water maker, 58 GPH with pre-filter, oil separator and weekly automatic rinse (2008)
- Side Thrust 24HP/24Volt bow thruster with 2 x 4D batteries and charger 2006, FB and PH controls
- Comprehensive fresh water treatment for entire boat, including automatic water softener, UV sterilization light and carbon filter
- New 120V air compressor
- Work bench with vise and grinder
- Engine room fans
- Glendinning engine synchronizer
- CO2 fire extinguishing system (engine room and genset room)
- AirSeps
- Mechanical engine gauges

Electronics and Entertainment Equipment

- Robertson AP-300 auto pilot, with single-lever steering, FB and PH
- KVH Satellite trac-phone
- KVH M3DX satellite TV system 2008, supports 3 DirecTV HD TVs
- Raymarine E120 system (FB and PH) with following modules installed from 2006 to 2009: GPS chartplotter, fishfinder/sounder, sirius weather, 72-mile HD color radar, lifetag system with 6 sensors/transmitters, 4 cameras (engine room and 2 looking aft)
- Raymarine ST60+ tri-data depth, speed, temp (FB and PH)
- Garmin 740S GPS chartplotter, depth, fish finder (PH) 2012
- 2 ICOM M-602 VHF radios with hailer (PH and FB) 2006
- ICOM remote command mic, 3 total, in salon cockpit and FB 2010
- Raritan rudder angle indicator FB and PH 2010
- EPIRB ACR RLB20
- Flat screen TVs, 3, all with DVDs
- Sony surround-sound stereo with speakers in salon, forward deck, flybridge, cockpit and staterooms
- Furuno FR1923 48-mile radar (PH)

Hull and Deck

A 9-foot cockpit was added and the flybridge deck extended (along with the salon) by Chinnock Marine in Fort Lauderdale, FL, 1995. The cockpit has a swim platform and a ladder leads from the cockpit to the flybridge area. The cockpit has an extra fuel tank, baitwell, transom shower, and transom door.

The flybridge features a custom center island counter complete with fixed stools, refrigerator and storage.

- Custom aluminum flybridge hardtop
- Teak rail surrounding foredeck
- MarQuipt davit and tender chocks
- Spare propellers, and stub shaft (1)
- Ideal 32-volt DC windlass
- Stainless steel plow anchor with 350' of chain
- Danforth anchor, spare
- Parachute sea anchor with 300' x 1" line, never used, 2008
- Fresh water wash down, foredeck and cockpit
- Dock boxes, foredeck
- USCG safety equipment (life jackets, flares and bell)
- Fenders and lines
- Boarding steps
- Windscreen
- BBQ grill (propane - FB)
- Novurania 13' tender with 50-HP Yamaha 4-stroke engine, 2000
- Switlik 6-man life raft 2004
- Viking 8-man life raft 2010

Electrical

- Kohler 32 kW genset, 1755 hours (5/2014)
- Northern Lights 20 kW genset, 2728 hours (5/2014)
- 32/12Volt DC distribution panel
- 220/110Volt AC distribution panel
- Electronics batteries with 12Volt DC charger FB
- Batteries: 32Volt DC bank
- LaMarche battery charger, 32Volt DC
- Battery parallel switch
- Isolation transformers (2)
- Shore power cables (50amp: 5 total 4 x 50' and 1 x 25')
- AC and DC interior lighting throughout
- Navigation lighting

- Engine room blowers
- Systems alarm panel
- Underwater Abyss lights- 3 colored and 2 white, 2011

EXCLUSIONS

Owner's personal items are excluded from any sale of **Big Wave**.

Remarks

Big Wave was totally painted with Awlgrip 2000 Matterhorn White in 2011. All exterior teak rails and trim were stripped and received 15 coats of varnish in 2013. The bottom was epoxy-sealed in 2012.

Numerous spare parts are aboard for peace of mind cruising.

This ever-popular Hatteras is known for its volume, high quality construction and cruising capabilities. **Big Wave** has benefited from a well-designed cockpit and salon extension making her a truly versatile family yacht.

Exclusions

Owner's personal belongings.

Disclaimer

The Company offers the details of this vessel or yacht in good faith but cannot guarantee or warrant the accuracy of this information nor warrant the condition of the vessel. A buyer should instruct his representatives, agents, or his surveyors, to investigate such details as the buyer desires validated. This vessel or yacht is offered subject to prior sale, price change, or withdrawal without notice.

PHOTOS

Lower Helm



Lower Helm



Galley



Dinette



Salon looking aft



Salon looking forward



Formal dining

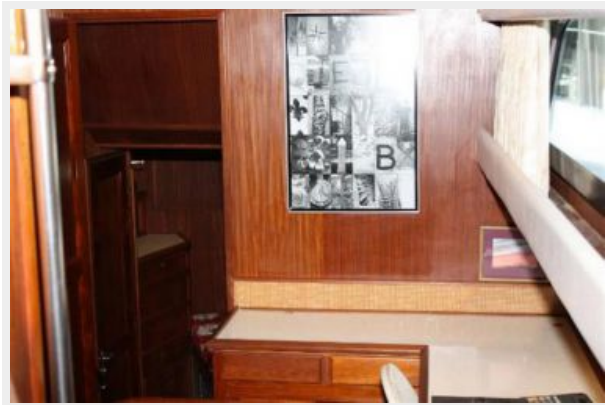


Wet Bar and Entertainment Components



Forward Guest/Crew Cabin

Office Area



Guest Stateroom 2



VIP Stateroom



Master Stateroom



Master Stateroom



Engine Room



Flybridge/Upper Helm



Flybridge



Flybridge looking forward



Flybridge looking aft



Novurania 13' Tender



Cockpit



Cockpit



Aft View/Cockpit



Foredeck



Bow Profile



Aft Profile



CONTACTS

Andrey Shestakov, leading yacht broker of the sales department of Shestakov Yacht Sales Inc. Shestakov Yacht Sales Inc., the official representative of the Miami/Fort Lauderdale FL headquarters.

Contact details

Email: andrey@shestakovyachtsales.com

Web: shestakovyachtsales.com/en/

Telephones

USA: +1(954)274-4435

Office hours

Monday – Saturday: **9:00 - 21:00** EDT

Sunday: **closed**

Address



Harbour Towne Marina, 850 NE 3rd St,
STE 213, Dania, FL 33004