

NEWS — DENISON



Судостроитель: DENISON

Год постройки: 1986

Модель: Моторная яхта

Цена: **ЦЕНА ЯХТЫ ПО ЗАПРОСУ**

Местонахождение: United States

Длина общая: 121' 0" (36.88m)

Ширина: 25' 0" (7.62m)

Мин. осадка: 6' 6" (1.98m)

Макс. осадка: 7' 0" (2.13m)

Крейс. скорость: 16 Kts. (18 MPH)

Макс. скорость: 20 Kts. (23 MPH)

Купить **NEWS — DENISON** а также выбрать подходящую вам яхту из нашего каталога яхт вам поможет опытный яхтенный брокер Андрей Шестаков. На сегодняшний день компания **Shestakov Yacht Sales Inc.** имеет большое количество яхт в собственном списке продаж, а также тесно сотрудничает со всеми крупными яхтенными производителями по всему миру.

Для того чтобы купить яхту **NEWS — DENISON** а также проконсультироваться по любому вопросу связанному с покупкой, продажей, чартером яхт позвоните по телефону **+7(918)465-66-44**.

ОГЛАВЛЕНИЕ

ОГЛАВЛЕНИЕ	2
ХАРАКТЕРИСТИКИ	5
Основная информация	5
Размеры	5
Скорость, вместимость и масса	5
Размещение	5
Корпус и палуба	6
Информация о двигателе	6
ПОДРОБНОЕ ОПИСАНИЕ	7
Additional Information	7
Исключения	13
Отказ от ответственности	13
ФОТОГРАФИИ	14
NEWS	14
Main Salon	14
Main Salon	14
Main Salon	14
Main Salon	14
Main Salon	14
Main Salon	15
Main Salon	15
Main Salon	15
Formal Dining Salon	15
Formal Dining Salon	15
Galley	15
Galley	16
Galley	16
Engine Room	16

Engine Room	16
Crew's Quarters	16
Pilot House	16
Pilot House	17
Pilot House	17
Pilot House	17
Flybidge - Boat Deck	17
Flybidge	17
Flybidge	17
Flybidge	18
Flybidge	18
Flybidge	18
Port Guest Stateroom	18
Stairway - Lower Accomodations	18
Starboard Guest Stateroom	18
Master Stateroom	19
Master Stateroom	19
Master Stateroom	19
Master Stateroom	19
Master Head(s)	19
Main Salon	19
Main Deck	20
Aft Deck	20
Aft Deck	20
Aft Deck	20
Main Deck	20
Cockpit	20
Cockpit	21
Pilot House	21

Foredeck	21
КОНТАКТЫ	22
Контактная информация	22
Телефоны	22
Время работы	22
Адрес	22

ХАРАКТЕРИСТИКИ

Основная информация

Тип судна: Моторная яхта

Модельный год: 1986

Год постройки: 1986

Страна: United States

Размеры

Длина общая: 121' 0" (36.88m)

Длина по ватерлинии: 25' 0" (7.62m)

Ширина: 25' 0" (7.62m)

Мин. осадка: 6' 6" (1.98m)

Макс. осадка: 7' 0" (2.13m)

Скорость, вместимость и масса

Крейс. скорость: 16 Kts. (18 MPH)

Крейсерская скорость поворота: 1650 Kts.

Дальность на крейсерской скорости:
2700

Макс. скорость: 20 Kts. (23 MPH)

Макс. скорость поворота: 2200 Kts.

Водоизмещение: 230000 Pounds

Вместимость воды: 5100 Gallons

Объем топливного бака: 12500 Gallons

Размещение

Всего кают: 3

Всего коек: 2

Всего ком. состава: 4

Корпус и палуба

Материал корпуса: Aluminum

Информация о двигателе

Производитель: MTU

Модель: Turbo Diesel

Тип топлива: Diesel

ПОДРОБНОЕ ОПИСАНИЕ

Additional Information

Boat Name NEWS

Specs Builder: Denison Designer: JOE LANGOLIS **Dimensions** LOA: 121 ft 0 in Beam: 25 ft 0 in Maximum Draft: 7 ft 0 in

CONSTRUCTION Built by Denison with an aluminum hull, superstructure, and teak decks. Extension by DENISON MARINE in 1991-2.

DIMENSIONS: GENERAL: Length Overall (L.O.A.): 121.00 feet (36.90 meters) Beam: 25.00 feet (7.60 meters) Draft: 7.00 feet (2.10 meters) Tonnage: 225 gross tons 67 net tons **TANK CAPACITIES:** Fuel Capacity: 12,500 U.S. Gallons (47,312 liters) Water Capacity: 1,700 U.S. Gallons (6,435 liters) **PERFORMANCE DATA//SOUND LEVELS:**

Speed //Consumption/Hour//RPM//Sound-Db:/F-B/PH/DS/MS/ADK/ACC Maximum: 20.0 knots //138 US Gallons // 2200// /73 /71 /70 / 70/72 / 70 Cruising: 16.0 knots // 65 US Gallon s// 1650 // /69 /67 /68 / 68/ 73 /74 Economy:13.5 knots // 55 US Gallons // 1500 // /64 / 65 /68 / 68/ 73 /70

MACHINERY:

MAIN ENGINES: Engine Type: (2) MTU 12V331 TC90 Turbo, @ 1,530 Hp Each Gearboxes for Main Engines: ZF BW450; Ratio: 3.481:1 Drive: Propeller **GENERATORS & ELECTRIC:** Output: 220 Volts; Single Phase; 60 Hz Generators: (2) 75 Kw Northern Lights generators Shore Power: 220 Volts; Single Phase; 60 Hz Batteries: 12 & 24 Volt Main Engine: 24V-Constavolt & Alt Generator Starting: 12V- Constavolt & Alternator General Service: 12V & 24V- Constavolt & Alternator Emergency: 12V Other: (2) Stabiline Voltage regulators (2) La Marche Isolation transformers **AIR CONDITIONING:** Type: Aqua Air - Chilled Water System Staged ("Soft") start boxes on each compressor **OTHER MACHINERY:** Stabilizers: Naiad 301 w/Koop Nautic head & 10 Sq. Ft. fins Bow Thruster: Yes Steering System: Dual Jastram hydraulic Fuel Separators: Triple Racor 1000's on Main Engines Alfa Laval MAB103 fuel centrifuge Sewage System: Microphor Fresh Water System: Dual 110 Volt Miscellaneous: Delta T engine room ventilation Gems Liquid Level Tank Sensors/Gauges Glendening electronic engine controls Port & Starboard wing stations on Flybridge

Fuel transfer system

COMMUNICATION, NAVIGATION & ENTERTAINMENT SYSTEMS:

COMMUNICATIONS SYSTEM: SATcom: Nera mini 'M' Stratos Telephone System: 12 Station - Panasonic hybrid; 2 land lines, cell & Sat SSB: Stephens Sea 235 digital VHF: Sailor RT 2047 (Pilothouse) Icom IC-M502 digital (Flybridge) Cellular Phone System: Verizon Intercom: Off ship's system **ELECTRONICS:** Twin Radars: Furuno NSO - EVO II; Range: 72nm (Pilothouse) Furuno 8100D; Range: 72nm (Pilothouse) w/8010 remote (Flybridge);

Gyrocompass: KVH Gyrotrac w/Flybridge repeater Magnetic Compass: 6" Hamberg (Pilothouse) 6" Ritchie (Flybridge)

Auto Pilot: Robertson AP9 Mark3 w/Flybridge repeater Depth Sounder: B&G HS-2000 digital w/Flybridge repeater GPS: Northstar 6000i (Flybridge) Northstar 951X (Pilothouse) Ships Computer: Dell (Crew area) Printer: HP PSC 1315 (Pilothouse) Wind/Speed Log: B&G Other: EMS Ship's monitor system w/3 displays **ENTERTAINMENT SYSTEMS:**

VISUAL:

Video Equipment Center: Trac-Vision for Satellite TV

TV's: 20" Sylvania plasma (Crew Mess) 36" Mitsubishi (Salon) 19" Toshiba (Master) (2) 13" Sony (Port, Starboard, & Guest) VCR's: Mitsubishi HS-U70 (Master) Sony SLV-L7HE (Salon) (2) Sony SLV-N55 (Port & Starboard Guest) Sony EV-F350 Video 8 (Salon)

AUDIO:

Stereo's: Sony STR-DE675 (Salon) Cassette: Sony TCRX77ES (Salon) CD Player: Sony PPV-C660 (Salon) Other: Niles SLVZ (2) Speaker selector (Salon) Sony remote stereo control (Master & Aft Deck)

GALLEY & LAUNDRY EQUIPMENT:

GALLEY EQUIPMENT: Range: (4) burner ceramic Dacor Oven: Dacor Microwave: Dacor Refrigeration/Freezer: Refrigerator: SubZero "Barn Door" Freezer: SubZero "Barn Door" (4) SubZero Drawer Freezers Dishwasher: Miele Trash Compactor: Viking

ADDITIONAL GALLEY EQUIPMENT:

Electric Bar-B-Q Grill (Cockpit) Refrigeration/Freezer: Two (2) SubZero Under-counter Refrigerators under control in Salon Bar & Flybridge Icemaker: Two (2) U-Line

Refrigerator/Freezers in Salon Bar & Flybridge General Galley: Nutone blender (Salon Bar)
Wetbar w/Sink Thermador Stainless Steel hood with vent **LAUNDRY EQUIPMENT:**

Main Laundry - Washer & Dryer: Asko 12605 (Crew) Asko 20605 (Guest Accommodations)
Dryer: Asko T711 (Crew) Asko TD73 (Guest Accommodations)

TENDERS & TOYS:

Tender: 17' Novurania 530 DL with Twin Yamaha Four Stroke 50 HP Outboard Motors Yamaha
Waverunner

DECK & MISCELLANEOUS EQUIPMENT:

Anchor Windlass System: Twin Capstan - Lofrans Ercole B Aft Warping Capstans: (3) –Cockpit,
& (2) Aft Deck; Ideal B Anchors: (2) 250lb Navy Anchor Chain: (2) 250' x 5/8" Boat Crane and
Davits: Marquipt Telescoping - 3000 Lb. Capacity Ladder: Marquipt Sea stairs

OTHER: (6) rod holders Transom showers Cockpit sink Aft deck & Flybridge Eisenglass
enclosures 12" Carlisle & Finch spotlight Kahlenberg 5 trumpet air horns Rybovich Marlin chair

SECURITY, FIRE FIGHTING & SAFETY EQUIPMENT:

FIRE FIGHTING EQUIPMENT:

Fire/Heat/Smoke/Detectors: Throughout Fixed Halon System: Lazarette, Engine Room, Steering
Room Fire Extinguishers: Throughout **SAFETY EQUIPMENT:**

Life Rafts: Two (2) 12 man Givens in canisters Life Rings: Four (4) - In Flybridge & Cockpit
EPIRBs: ACR 406 mhz Flares: Full U.S. Coast Guard safety kit

GENERAL COMMENTS ON ACCOMMODATIONS:

***LET'S START WITH A LETTER FROM THE PERSON WHO KNOWS THE YACHT BETTER
THAN ANYONE...THE CAPTAIN ON THE M/Y NEWS:***

***"I've been the Captain for the last 4 years and enjoyed working on the yacht. Over the
past few years we have done a lot of work on the yacht. We've painted the hull, refinished
the decks and cap rail, (installed) new equipment and performed maintenance on all***

systems. I've enjoyed bringing up the yacht to its classic Denison Yacht standards.

The owners have many years on this yacht, mostly private use. He also had many large parties on board up to 75 people. When the yacht had large parties, it had more room than expected. Between the Salon, Aft Deck, Flybridge, and Cockpit, we would have more than enough for large groups. Even though we have not chartered the yacht, it would be an awesome charter yacht. It has a well laid out galley, dining room, and the guest rooms are very spacious."

- Captain Steve Pulaski

DESCRIPTION OF ACCOMMODATIONS:

HISTORY AND FUTURE:

NEWS was originally built with four (4) Staterooms, and was designed for corporate entertainment and major corporate events. In fact, the "ALLIANCE," as she was formerly known, logged 100 events in New York City in one summer!

After the "ALLIANCE" was sold, the four (4) staterooms were converted to three, combining two (2) forward staterooms into one very large, full-width master stateroom, with "His and Hers" heads.

As Captain Pulaski states in his letter (above), NEWS would make an "awesome charter yacht." The lower Accommodations can be re-configured into the original four (4) stateroom layout, and the large Dining Salon can be modified into an on-deck stateroom office/convertible den...making NEWS into a Five (5) stateroom Charter Yacht.

(NOTE: DYS HAS PREPARED AN ADDENDUM - "CHARTERING NEWS")

DESCRIPTION OF ACCOMMODATIONS:

Main Deck - Exterior:

Classic Teak Decks cover the wide side walk-around decks and forward deck, as well as the aft deck and cockpit sole.

The FOREDECK has large built-in Port and Starboard aluminum deck boxes (with side cushions and covers), and, in addition, has been fitted with teak chairs and table. The ground tackle is a large, dual hydraulic "Lofrans - Ercole B" Anchor Windlass.

After boarding through the amidships boarding gate, you walk aft along a wide walk-around, through the wing doors to a spacious, enclosed, and air conditioned AFT DECK. There is a built-in curved settee, with custom end tables and a center-line table, with side chairs. Port and starboard stairs lead down to the large cruising Cockpit.

The COCKPIT is fitted with a Rybovich "Marlin" chair, built-in storage cabinets - with sink and Bar-B-Q. A starboard side transom door leads to a large swim platform, which allows guests

easy access for the Tender and Jet Skis to enjoy scuba, fishing, and other water sports. Two (2) 75 KW "Northern Lights" generators are installed under the Cockpit sole, to provide a separate generator space to reduce sound levels within the accommodation spaces.

Forward of the Aft Deck, and through dual sliding Stainless sliding doors, is the spacious MAIN SALON. Large windows illuminate the beautiful Teak paneling, inlaid with lighter Burlled Ash.

A Grand Piano anchors the port aft corner of the Salon, with several seating areas to encourage relaxation and/or casual conversation. A large Teak and Burlled Ash Breakfront & Wet Bar dominates the forward end of the MAIN SALON.

Following the starboard companionway past the forward end of the MAIN SALON, and passing the RAISED PILOT HOUSE as you proceed forward, is the large FORMAL DINING SALON, with seating for ten (10).

The forward bulkhead of the DINING SALON has a 15 foot long teak buffet crafted in teak with burlled ash inlaid panels, a marble counter top, with lots of storage space for the dishes, silverware, and serving pieces...all set off with a large mirror, running the full length of the Buffet. The aft bulkhead showcases a beautiful painting, and a movie screen for "Show and Tell" drops from the overhead at the port side windows.

The GALLEY is just forward of the DINING SALON through a swinging teak door, and is professionally-equipped to handle a large group for special events of up to 75 guests, or for up to ten (10) guests at a more intimate dinner party. There is plenty of counter space, and a center island makes serving more efficient. There is plenty of storage space in the cabinetry, and all the appliances are professional for serving the finest fare.

From the starboard side of GALLEY, and down the corner stairway is the large CREWS' QUARTERS, with room for up to five (5) in Crew. A U-Shaped Crews' Mess is at the forward end of this space, with plenty of room for eating or just hanging out and relaxing. Captain and Crew Staterooms line the Companionway that leads aft to the watertight door to the ENGINE ROOM.

The ENGINE ROOM is full-height, with easy access to the MTU12 V- 331 TC 90 Turbo-Charged Diesel Engines, as well as all of the other machinery.

The ACCOMMODATIONS can be accessed from a curved teak and plexiglass stairway at the midpoint of the MAIN SALON on the starboard side. The Stairway winds down to a large octagonal foyer with a stunning ceiling recess.

The MASTER STATEROOM is directly forward, and features a full King-Size Berth with an upholstered headboard, set off by a full-length mirror, flanked by custom sconces. Twin full-height cedar-lined closets flank the Mater Berth, with built-in dressers on the port and starboard sides, including a large make-up vanity on the port side. The "His and Hers" are located in the aft bulkhead of the Stateroom; "Hers" on the port side with a full 5 foot tub, and "His" on the starboard side with a large shower. Both Heads have large vanities, with "Sherle Wagner" sinks and fixtures along the ship's sides.

The PORT GUEST STATEROOM features a Queen-Size Berth, a large cedar-lined closet, enough room for a large arm chair for reading or relaxing beneath another beautiful lighted scone. A full head, with shower and marble-topped vanity is aft through the rounded frame teak and mirror door.

The STARBOARD GUEST STATEROOM features Twin Berths separated by a removable night stand that allows the Twin Berths to form a full King-Sized berth. This Stateroom has a full head, with a vanity and shower, as well as the corner upholstered chair, and a large cedar-lined closet.

The PILOT HOUSE is located in the center of the MAIN DECK, and has a comfortable raised bench seat facing the full array of instruments and electronics in a wrap-around console. The Electronics have been updated recently with the latest 72-Mile Range Furuno "NSO-EVO II" Radar.

The FLYBRIDGE is reached by a comfortable stairway on the port side of the bench seat through a folding plexiglass hatch. The Upper Helm Station duplicates all the essential Instrumentation and Electronics, with a custom "Stidd" Helm Chair, with the forward portion of the FLYBRIDGE covered in a anodized aluminum Hardtop.

A large aluminum Mast Island provides the base for the large aluminum radar mast, with spreaders supporting the electronics array. A full Wet Bar with Refrigerator, Ice Maker, and lots of storage is under the mast Island. The U-Shaped welded aluminum seating provides seating for over 15 guests, as well as storage underneath.

Aft of the covered seating area is a large, open Boat Deck with room for two (2) tenders, Jet Skiis, other "Toys," and life rafts. The Tenders can be launched form either side with a 3,000 pound capacity telescoping "Marquipt" Crane.

EXCLUSIONS: *All of Owner's personal effects;*

The Owner's Custom Wood and Fiberglass "Hacker-Craft"

NOTE: All speeds, fuel consumption, and tank capacities are approximate.

DISCLAIMER: Specifications are provided for information only and particulars herein obtained from sources believed to be correct, but are not guaranteed. Buyer should instruct his agent and/or surveyor to check all details for accuracy.

Vessel is offered subject to prior sale, price and/or inventory change, or withdrawal from the market without notification.

Исключения

При продаже яхты исключаются личные вещи владельца.

Отказ от ответственности

Компания предоставляет описание судна или яхты добросовестно, но не может гарантировать точность этой информации, а также не ручается за техническое состояние. Покупатель должен проинструктировать своих агентов или оценщиков исследовать представленную информацию более подробно, по собственному желанию. Продажа судна или яхты, изменение цены или снятие с продажи будет происходить без предварительного уведомления.

ФОТОГРАФИИ

NEWS



Main Salon



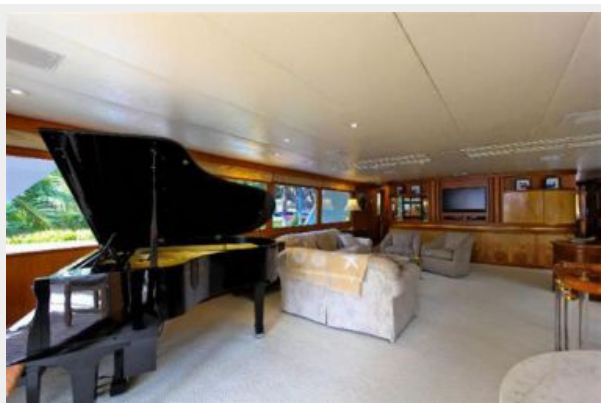
Main Salon



Main Salon



Main Salon



Main Salon



Main Salon



Main Salon



Main Salon



Formal Dining Salon



Formal Dining Salon



Galley



Galley



Galley



Engine Room



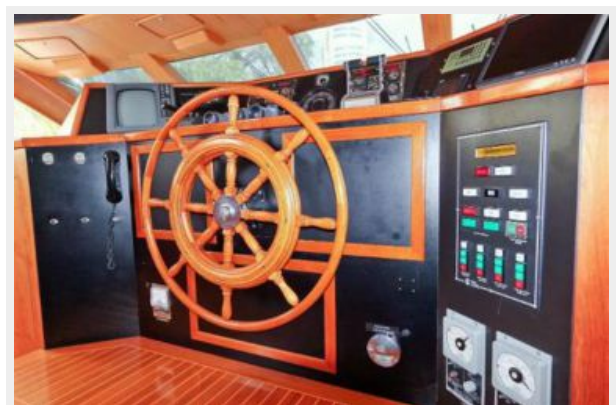
Engine Room



Crew's Quarters



Pilot House



Pilot House



Pilot House



Pilot House



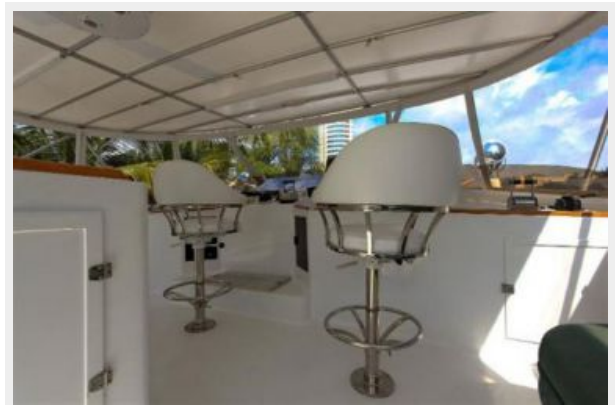
Flybridge - Boat Deck



Flybridge



Flybridge



Flybidge



Flybidge



Flybidge



Port Guest Stateroom



Stairway - Lower Accomodations



Starboard Guest Stateroom



Master Stateroom



Master Stateroom



Master Stateroom



Master Stateroom



Master Head(s)



Main Salon



Main Deck



Aft Deck



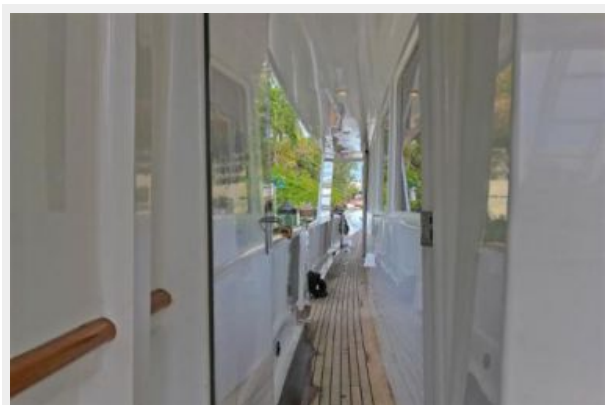
Aft Deck



Aft Deck



Main Deck



Cockpit



Cockpit



Pilot House



Foredeck



КОНТАКТЫ

Андрей Шестаков (Andrey Shestakov) – ведущий яхтенный брокер отдела продаж яхт и судов компании Shestakov Yacht Sales Inc. Официальный представитель Shestakov Yacht Sales Inc. для русскоговорящих клиентов в центральном офисе компании в Майами/Форт Лодердейл/Флорида/США.

Контактная информация

Email: andrey@shestakovyachtsales.com

Web: shestakovyachtsales.com

Телефоны

Краснодарский край: **+7(918)465-66-44**

США, Майами, Флорида: **+1(954)274-4435**

Время работы

Понедельник – Суббота: **9:00 - 21:00**
EDT

Воскресенье: **Закрето**

Адрес



Harbour Towne Marina, 850 NE 3rd St,
STE 213, Dania, FL 33004