

HANDEM — ADIK TUZLA



Builder: [Adik Tuzla](#)

Year Built: 2003

Model: Motorsailer

Price: PRICE ON APPLICATION

Location: Turkey

LOA: 29' 0" (8.84m)

Beam: 7' 0" (2.13m)

Min Draft: 2' 5" (0.74m)

Max Draft: 4' 0" (1.22m)

Cruise Speed: 11 Kts. (13 MPH)

Max Speed: 12 Kts. (14 MPH)

Our experienced yacht broker, Andrey Shestakov, will help you choose and buy a yacht that best suits your needs **Handem — Adik Tuzla** from our catalogue. Presently, at Shestakov Yacht Sales Inc., we have a wide variety of yachts available on our sale's list. We also work in close contact with all the big yacht manufacturers from all over the world.

If you would like to buy a yacht **Handem — Adik Tuzla** or would like help answering any questions concerning purchasing, selling or chartering a yacht, please call **+1(954)274-4435**

TABLE OF CONTENTS

TABLE OF CONTENTS	2
SPECIFICATIONS	3
Basic Information	3
Dimensions	3
Speed, Capacities and Weight	3
Accommodations	3
Hull and Deck Information	3
Engine Information	4
DETAILED INFORMATION	5
Build & Design	5
Deck Equipment	5
Refit March 2011	5
Engines, Electrical & Fuel Systems	5
Accommodations	6
Exclusions	6
Disclaimer	6
PHOTOS	8
CONTACTS	12
Contact details	12
Telephones	12
Office hours	12
Address	12

SPECIFICATIONS

Basic Information

Category: Motorsailor

Model Year: 2003

Year Built: 2003

Country: Turkey

Dimensions

LOA: 29' 0" (8.84m)

LWL: 21' 0" (6.40m)

LOD: 27' 0" (8.23m)

Beam: 7' 0" (2.13m)

Min Draft: 2' 5" (0.74m)

Max Draft: 4' 0" (1.22m)

Speed, Capacities and Weight

Cruise Speed: 11 Kts. (13 MPH)

Max Speed: 12 Kts. (14 MPH)

Water Capacity: 4500 Gallons

Holding Tank: 1200 Gallons

Fuel Capacity: 4200 Gallons

Accommodations

Total Cabins: 4

Total Berths: 4

Total Heads: 4

Hull and Deck Information

Hull Material: Wood

Engine Information

Engines: 1

Manufacturer: Caterpillar

Model: 3406 C DITA

Engine Type: Inboard

Fuel Type: Diesel

DETAILED INFORMATION

Build & Design

Adik - Anadolu Shipyard finished building sailing yacht *HANDEM* in 2003 in Turkey. *HANDEM* accommodates 8 guests and 5 crew members. Naval architect T. Soyaslan and Anadolu Shipyard launched *Handem* in Istanbul in 2003.

The sailing yacht main superstructure is made for the most part from composite. She has a width of 6.74 m or 22.1 feet and a reasonably deep draught of 3.96m (13ft).

Deck Equipment

TENDER AND SPORT EQUIPMENT: BOSTON WHALER DINGHY 40 HP 3,50 MT JOKER 9,9 HP 3,15 MT

LAUNDRY EQUIPMENT: BOSCH WASHING MACHINE & DRYER

GALLEY EQUIPMENT: BOSCH STOVE & OVEN, MICROWAVE, REFRIGERATOR, DEEP FREEZER, ICE MAKER, WINE CELLAR, COMBO ICE MAK-REFR

SAFETY EQUIPMENT: LIFE RAFT PLASTIMO ORC 2*8 LIFE JACKETS PLASTIMO (14) LIFE BUOY PLASTIMO (6) FIRE EXTINGUISHER GLORIA 4*15 KG + 6*2 KG CO2 SYSTEM GLORIA

RIGGING: MASTS & SPARS 26 MT & 24 MT ALUMINIUM STANDING RINGING ST STEEL 1*19 SAILS DACRON 4 TOTAL 450 M2 + GENEKER 5 WINCHS ANTAL 2* ELECTICS + 11 MANUAL FURLER BAMAR (ARTE) 4 ELECTRIC Area of sail: 500 meters squared

AUXILIARY SERVICES: ANTI FIRE PUMPS GIANNESCHI 2 PCS (24 V-220 V)

DECK EQUIPMENT: ANCHOR 2*150 KG S/S, CHAIN 14 MM WINDLASS DATA HYDROLIC GANGWAY OPACMARE HYDROLIC DECK CHAIRS & TABLE HATCHES TEAK DECK

Refit March 2011

Refit in March 2011: updated flooring, deck (where required), refurbished the mast and sails. The yacht is in excellent condition.

Engines, Electrical & Fuel Systems

The Caterpillar 3406C engine is driven by a single screw propeller - 540 horse power (or 397 kilowatts)

GEAR BOX TWIN DISC MG 514-C 3/1 REDUCTION SPEED: 12 NT CONSUMPTION 50LT/1600TMN STEERING DATA HYDRAULIC BOW TRUSTER RODRIGUEZ 50 HP HYDRAULIC WATER MAKER IDROMAR 130 LT/HR

BATTERIES GENERATORS ONAN 2*24 KW INVERTER VICTRON 4500 W TRAF0 45 KVA (380-220 V)

NAVIGATION SYSTEM (DUAL SYSTEM) COMPASS PLASTIMO RADAR SIMRAD 24 NM W RANDOM ANTENNA ECOSOUNDER SIMRAD AUTOPILOT ROBERTSON AP 20 CHART PLOTTER SIMRAD VHF SIMRAD BILGE PUMPS GIANNESCHI 2 PCS (24 V-220 V) FRESH WATER PUMPS GIANNESCHI 2 PCS (24 V-220 V) TOILET SYSTEM HEAD HUNTER AIR CONDITIONING AQUA AIR (TOTAL 95,000 BTU) + TANK GAUGE VEMA TELEPHONE SWITCHBOX KAREL MS 48 BOILER SANGUINETTI 120 LT ENTERTAINMENT EQUIPMENT HI-FI MUSIC SET BOSE LIFE STYL 50 TV 54 SONY + 2 SONY 29 DECODER 3 SAT ANTENNA SEA TEL

Equipment: in accordance with a yacht of VIP class

Accommodations

ACCOMMODATIONS FOR 8 GUESTS

GUEST CABINS - 4 DBL & EN SUITE

ACCOMMODATIONS FOR 5 CREW

CREW QUARTERS - 2 SGL & EN SUITE CAPTAIN QUARTER - 1 SGL & EN SUITE

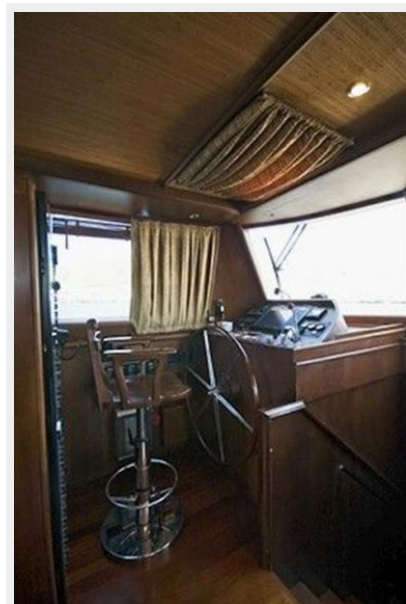
Exclusions

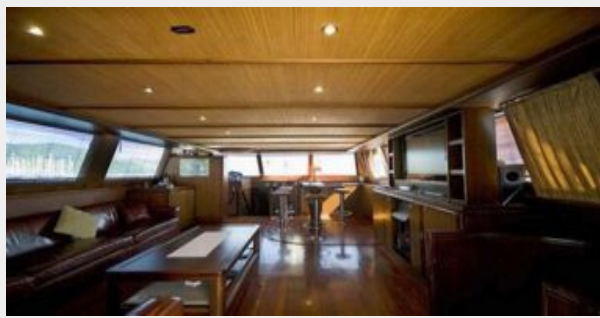
Owner's personal belongings.

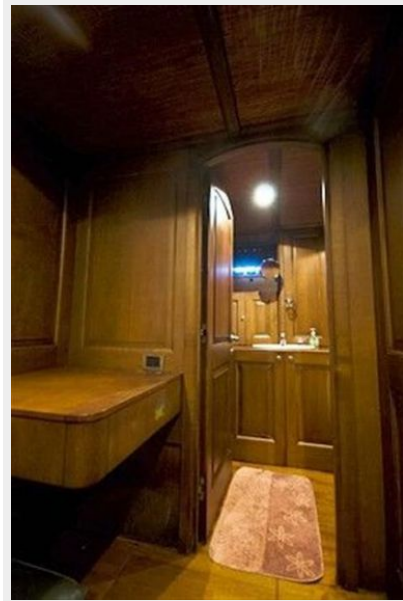
Disclaimer

The Company offers the details of this vessel or yacht in good faith but cannot guarantee or warrant the accuracy of this information nor warrant the condition of the vessel. A buyer should instruct his representatives, agents, or his surveyors, to investigate such details as the buyer desires validated. This vessel or yacht is offered subject to prior sale, price change, or withdrawal without notice.

PHOTOS









CONTACTS

Andrey Shestakov, leading yacht broker of the sales department of Shestakov Yacht Sales Inc. Shestakov Yacht Sales Inc., the official representative of the Miami/Fort Lauderdale FL headquarters.

Contact details

Email: andrey@shestakovyachtsales.com

Web: shestakovyachtsales.com/en/

Telephones

USA: +1(954)274-4435

Office hours

Monday – Saturday: **9:00 - 21:00** EDT

Sunday: **closed**

Address



Harbour Towne Marina, 850 NE 3rd St,
STE 213, Dania, FL 33004