

NO NAME — CUSTOM



Судостроитель: CUSTOM

Год постройки: 1983

Модель: Промысловое судно

Цена: **ЦЕНА ЯХТЫ ПО ЗАПРОСУ**

Местонахождение: United States

Длина общая: 112' 0" (34.14m)

Ширина: 29' 0" (8.84m)

Макс. осадка: 7' 0" (2.13m)

Купить **NO NAME — CUSTOM** а также выбрать подходящую вам яхту из нашего каталога яхт вам поможет опытный яхтенный брокер Андрей Шестаков. На сегодняшний день компания **Shestakov Yacht Sales Inc.** имеет большое количество яхт в собственном списке продаж, а также тесно сотрудничает со всеми крупными яхтенными производителями по всему миру.

Для того чтобы купить яхту **NO NAME — CUSTOM** а также проконсультироваться по любому вопросу связанному с покупкой, продажей, чартером яхт позвоните по телефону **+7(918)465-66-44**.

ОГЛАВЛЕНИЕ

ОГЛАВЛЕНИЕ	2
ХАРАКТЕРИСТИКИ	3
Обзор	3
Основная информация	6
Размеры	6
Скорость, вместимость и масса	6
Размещение	7
Корпус и палуба	7
Информация о двигателе	7
ФОТОГРАФИИ	8
КОНТАКТЫ	13
Контактная информация	13
Телефоны	13
Время работы	13
Адрес	13

ХАРАКТЕРИСТИКИ

Обзор

This vessel is ready for service, **current COI is good through 2017**. 22 cabins total, with 18 staterooms with 2 berths, 2 staterooms have 4 berths and 2 staterooms have 1 berth. All cabins containing flat screen TV's with Direct TV receivers and head with showers. She is reported to be in very good condition, with **renovations in 2007 with new electrical system, HVAC and interior paint**. Also in **2007 the main generator was replaced with a 100 KW Onan powered by John Deere** with sound shield. There is a **USCG approved Orca I sewage treatment system on board**. A **complete commercial galley** with stainless appliances and work spaces. She could be used for over night passenger vessel to the Keys or Northeast, Maritime training vessel or even research. **Excellent Financing possibility's. Dimensions LOA: 112 ft 0 in Beam: 29 ft 0 in LWL: 99 ft 0 in Maximum Draft: 7 ft 0 in Engines Engine 1: Engine Brand: Detroit Diesel Year Built: 1983 Engine Model: 12 V 71 N Engine Type: Inboard Engine/Fuel Type: Diesel Location: Port Drive Type: Direct Drive Engine 2: Engine Brand: Detroit Diesel Year Built: 1983 Engine Model: 12 V 71 N Engine Type: Inboard Engine/Fuel Type: Diesel Location: Starboard Drive Type: Direct Drive Tanks Fresh Water Tanks: (6000 Gallons) Fuel Tanks: (5600 Gallons) Holding Tanks: (2000 Gallons)**

Accommodations

Boarding the vessel on the starboard side, you step onto the main deck and move to the center hallway. Turn left and move aft you will find 3 cabins and the first of 2 Laundry areas. Moving forward you will pass the staircase that will lead you to the engine room (down) and the 2nd deck (up). Continue moving forward, the hall will lead you past an additional 7 cabins, all with a head, shower and flat screen TVs. Half way down the hall there is another set of stairs leading down to the 2 cabins below. Forward and starboard of the midway stairs, you will find the dining area and another staircase. Forward of the dining area is the large fully equipped commercial galley. Moving up the forward staircase to the 2nd deck, you will find a center hallway. Moving aft, the first cabin on the port side is the Capt. Quarters that has a doorway leading to the bow and the helm station. Moving aft of the Capt. Quarters you will find 9 additional cabins. Still moving aft, at the end of the hall on the starboard side you find the 2nd laundry area. Out the exit you will find an area for the gas grill and stairs going up to the observation area.

Helm

- ◆ Engine instrumentation includes Tach., Ammeters, Oil Pressure, Water Temp., Gear Oil Pressure
- ◆ Simrad model AP50 Autopilot
- ◆ Furuno model Nav. Net XX2 Radar with GPS, Chart Plotter & Depth Sounder

- ◆ **2 Icom model ICM 604/304 VHF/FM Marine Radios**
- ◆ **Ritchie Compass**
- ◆ **Wagner model 150 Rudder Indicator**
- ◆ **Speco model PBM-120 Amplifier & Public Address System with Internal & External Speakers**
- ◆ **Pneumatic Clutch Throttle Controls**
- ◆ **Wagner Hydraulic Steering System**
- ◆ **Kahlenberg model S-2 Horn**
- ◆ **Fog Bell**
- ◆ **Perko Lever Controlled Searchlight**
- ◆ **Windshield Wipers**

Galley

- ◆ **Delafield model 600 XL Refrigerator**
- ◆ **Delafield model 600 XL Freezer**
- ◆ **Eva - 2 Commercial Dishwasher**
- ◆ **APW-Wyott Double Deep Fryer**
- ◆ **APW-Wyott Flattop Griddle**
- ◆ **2 Champion Two Burner model Shep Hot Plates**
- ◆ **Kenmore Microwave Oven**
- ◆ **American Proline Hot Water Heater**
- ◆ **Manitowoc model B420 Ice Maker**
- ◆ **Ansul model PCL46C Fire Suppression System**
- ◆ **Assorted Dishes, Utensils, Pots & Pans**

Electrical

- ◆ 100 KW Onan Generator Powered by a John Deere Marine Diesel (New in 2007) with Sound Shield.
- ◆ 88 KW Lima Generator Powered by a Cummings Marine Diesel Model 440SSL0811
- ◆ Ship to Shore Power Switch
- ◆ Battery Isolation Switch
- ◆ 120 VAC VDC Lighting
- ◆ 120 VAC Duplex Outlets
- ◆ Two 12 VDC wired in Series for each Engine
- ◆ One 12 VDC 8D Heavy Duty Battery for Generators
- ◆ Internationally Approved Navigation Lights

Staterooms

- ◆ This Vessel is Equipped with Eighteen Staterooms with 2 Bunks, 2 Staterooms with 4 Bunks and 2 Staterooms with 1 Bunk.
- ◆ Each Stateroom contains Hanging Locker, Chest of Drawers, Head with Toilet and Shower and a Flat Screen TV.

Hull

- ◆ 1/4" Inch Steel Plate Hull
- ◆ 3/16" and 1/8" Steel Plate on Deck House
- ◆ Deck House is Insulated
- ◆ 7 Watertight Compartments Formed by 6 Transverse Bulkheads

Safety Equipment

- ◆ 165 Type I Adult PFD
- ◆ 16 Type I Child Size PFD
- ◆ 4 Twenty Five Person Life Float Buoyant Flotation Devices
- ◆ Three 24" Life Rings, 1 with Line & Light

- ◆ Northern Airborne Technologies EPIRB 406 MHz
- ◆ One Illuminated Float Light
- ◆ Pyrotechnic Distress Signals
- ◆ Two Fire Stations with Two 2" UL Approved Rubber Lined Hoses
- ◆ Fire Ax
- ◆ A 175 lb & 200 lb Danforth Anchors with 300' of Rode

Broker Comments

This vessel is set up for passengers with 18 cabins with 2 bunks, 2 cabins with 1 bunk and 2 cabins with 4 bunks. It would be great for a Maritime Training Vessel or possibly expedition of some sort. Or a passenger vessel to the keys or elsewhere. All systems are in good working order and the Capt. says it is ready to go. Give me a call today to talk about the possibility's this vessel presents.

Основная информация

Тип судна: Промысловое судно	Модельный год: 1983
Год постройки: 1983	Страна: United States

Размеры

Длина общая: 112' 0" (34.14m)	Длина по ватерлинии: 99' 0" (30.18m)
Ширина: 29' 0" (8.84m)	Макс. осадка: 7' 0" (2.13m)

Скорость, вместимость и масса

Вместимость воды: 6000 Gallons	Вместимость сточного бака: 2000 Gallons
--------------------------------	---

Объем топливного бака: 5600 Gallons

Размещение

Всего кают: 24

Корпус и палуба

Материал корпуса: Steel

Информация о двигателе

Двигатели: 2

Производитель: Detroit Diesel

Модель: 12 V 71 N

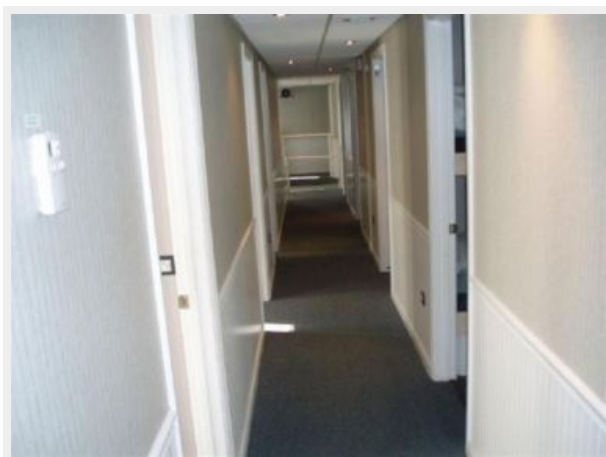
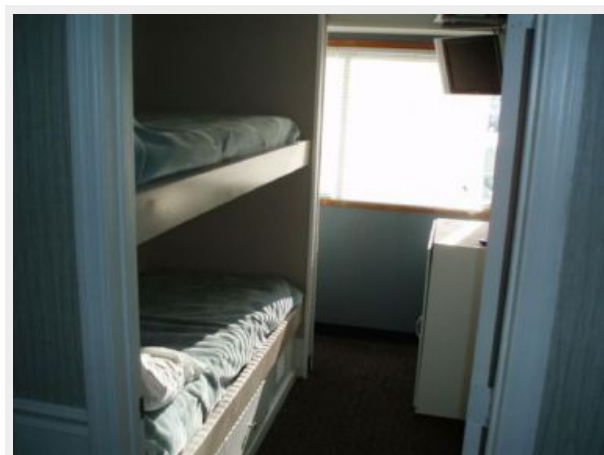
Тип двигателя: Inboard

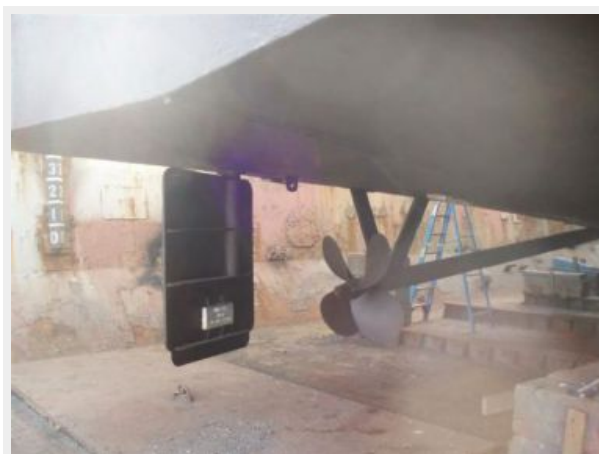
Тип топлива: Diesel

ФОТОГРАФИИ











КОНТАКТЫ

Андрей Шестаков (Andrey Shestakov) – ведущий яхтенный брокер отдела продаж яхт и судов компании Shestakov Yacht Sales Inc. Официальный представитель Shestakov Yacht Sales Inc. для русскоговорящих клиентов в центральном офисе компании в Майами/Форт Лодердейл/Флорида/США.

Контактная информация

Email: andrey@shestakovyachtsales.com

Web: shestakovyachtsales.com

Телефоны

Краснодарский край: **+7(918)465-66-44**

США, Майами, Флорида: **+1(954)274-4435**

Время работы

Понедельник – Суббота: **9:00 - 21:00**
EDT

Воскресенье: **Закрето**

Адрес



Harbour Towne Marina, 850 NE 3rd St,
STE 213, Dania, FL 33004