

NO NAME — BAHAMA BOAT WORKS



Builder: BAHAMA BOAT WORKS

LOA: 41' 0" (12.50m)

Year Built: 2011

Beam: 11' 0" (3.35m)

Model: Center Console

Price: PRICE ON APPLICATION

Location: United States

Our experienced yacht broker, Andrey Shestakov, will help you choose and buy a yacht that best suits your needs **No Name — BAHAMA BOAT WORKS** from our catalogue. Presently, at Shestakov Yacht Sales Inc., we have a wide variety of yachts available on our sale's list. We also work in close contact with all the big yacht manufacturers from all over the world.

If you would like to buy a yacht **No Name — BAHAMA BOAT WORKS** or would like help answering any questions concerning purchasing, selling or chartering a yacht, please call **+1(954)274-4435**

TABLE OF CONTENTS

| | |
|------------------------------|----|
| TABLE OF CONTENTS | 2 |
| SPECIFICATIONS | 3 |
| Overview | 3 |
| Basic Information | 3 |
| Dimensions | 3 |
| Speed, Capacities and Weight | 3 |
| Hull and Deck Information | 3 |
| Engine Information | 3 |
| DETAILED INFORMATION | 4 |
| Electronics | 4 |
| Features | 4 |
| Exclusions | 5 |
| Disclaimer | 5 |
| PHOTOS | 6 |
| CONTACTS | 13 |
| Contact details | 13 |
| Telephones | 13 |
| Office hours | 13 |
| Address | 13 |

SPECIFICATIONS

Overview

It's better in a Bahama!

The Bahama 41 blends speed, safety and durability into the finest center console experience on the water. The fit, finish and rigging is beyond belief. Experience, mixed with taste and craftsmanship, ensure that when we build your boat you'll own the ultimate open fishing machine. The Bahama 41 is the result of a lifetime of planning and wishing, dreaming and doing.

Basic Information

Category: Center Console

Model Year: 2011

Year Built: 2011

Country: United States

Dimensions

LOA: 41' 0" (12.50m)

Beam: 11' 0" (3.35m)

Speed, Capacities and Weight

Water Capacity: 65 Gallons

Fuel Capacity: 630 Gallons

Hull and Deck Information

Hull Material: Composite

Engine Information

Engines: 3

Manufacturer: Yamaha

Engine Type: Outboard

Fuel Type: Gas

DETAILED INFORMATION

Electronics

- 2 x Charles 35 amp Battery Charges
- Charles Isolation/Transformer System
- Richie 2000 White Compass
- Garmin 8215 ChartPlotter
- Garmin Depth Sounder with Chirp Technology Transducer
- Garmin Auto Pilot
- Garmin 4kw Radar
- Garmin GMX-52 Weather Overlay Receiver
- Garmin Autopilot
- ICOM M504 VHF x 2
- 2 x Overhead VHF Speakers
- Comrod 8' AM-FM Antennas x 2
- Clarion CMD6 Stereo
- JL M400 AMP
- JL M770 Bullet Speakers x 4
- Sirius Sat. Audio
- RCL 100 Remote Searchlight

Features

With an 11 foot beam, the 41 boasts superior stability and fishing room. Computer technology was used to both design and CNC loft the production tooling, resulting in an incredibly fair hull form. The Most obvious benefit is in hydrodynamic performance. A fair bottom is an efficient- and there fast-bottom.

From layout to her fit and finish, the Bahama includes many unusually clever details. All hatches and doors have full liners and utilize a proprietary double-seal design for true dry storage. The fully lined console contains a spacious head featuring six foot six inch headroom and eleven feet of below deck storage area. Each hardware component has been carefully chosen for their individual beauty and durability. All latches and hinges are recessed and many blind fasteners are utilized, resulting in very few visible screw heads. From the most mundane unseen fastener to the electrical wiring harnesses, every component used is top shelf.

Construction quality is also of the highest standard. All gelcoat is CCP ArmorFlex, with the highest degree of UV resistance available. Vinylester resin provides the ultimate in blister resistance, and a ceramic matrix transom eliminates all wood from the vessel. Four full-height fiberglass stringers and integral wells add to the anvil- tough construction of this craft. Heavy-gauge aluminum fuel tanks provide 368 usable gallons of capacity offering extended fishing range.

- 2 x 28" Grab Rails
- 2 x 36" Grab Handles
- Hard Top with Access Hatch
- Low Profile Bow Rail
- Glove Box Panel with 1 Hatch
- Pair Top Gun Outrigger Bases
- Pair of Rupp 18' Poles
- Single Halyard Outrigger System w/ Slider
- 6 Tulip Bolt on Rod Holders
- 6 x 30° Release Rod Holders
- 8 x 15° Release Rod Holders
- 3 x 12v Kristal Plugs (Kite or deep drop)
- Tilt Helm Upgrade
- Edson 16" Steering Wheel with Power Knob
- Galley Maid Head
- Armstrong 3-Step Ladder
- Stainless Steel Heavy Duty Tow Eye
- 360° Bolster Package
- 3-Piece Eisenglass Forward and Wings (Forward EZ2CY)
- LED Blue Underwater Lights (4 x Amphibian A12's) (2 x A12's Pro)
- Birdsall Under Gunnel Gaff Holders x 2
- LED Spreader Lights x 3
- LED Blue Strip Under Gunnel Lights
- Fortress Anchor, 8' stainless chain, 200' rope
- 3.5GPM Saltwater Washdown System
- 3.5GPM Freshwater System
- 2 x 1600 GPH Live Well Pumps
- 2 x Rule 2000GPM Bilge Pumps
- Keikhafer Trim Tabs
- Glendinning Anchor Locker Retractable Freshwater Hose

Exclusions

Owner's personal belongings.

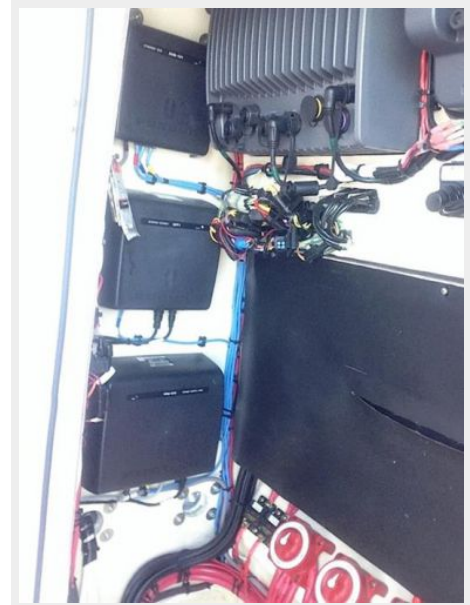
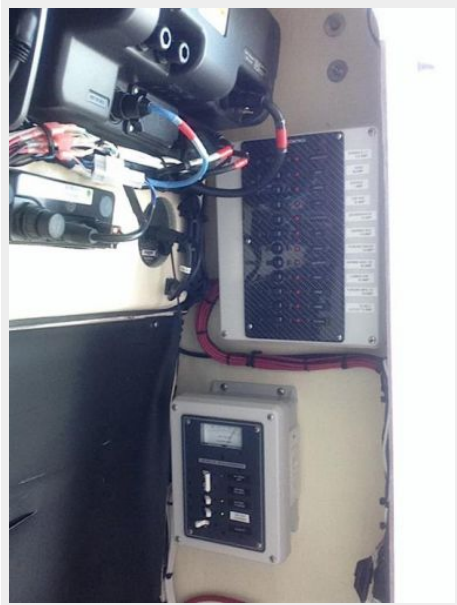
Disclaimer

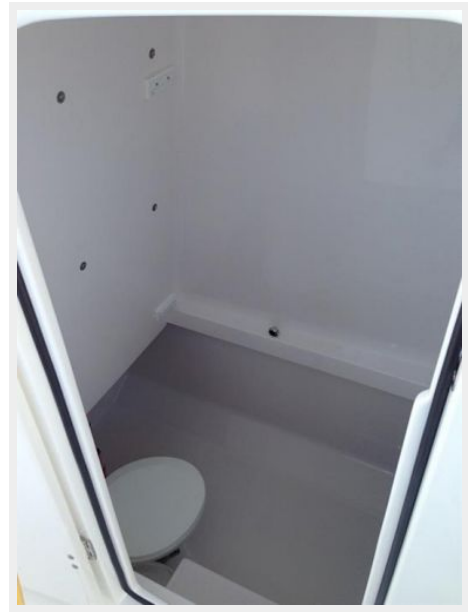
The Company offers the details of this vessel or yacht in good faith but cannot guarantee or warrant the accuracy of this information nor warrant the condition of the vessel. A buyer should instruct his representatives, agents, or his surveyors, to investigate such details as the buyer desires validated. This vessel or yacht is offered subject to prior sale, price change, or withdrawal without notice.

PHOTOS















CONTACTS

Andrey Shestakov, leading yacht broker of the sales department of Shestakov Yacht Sales Inc. Shestakov Yacht Sales Inc., the official representative of the Miami/Fort Lauderdale FL headquarters.

Contact details

Email: andrey@shestakovyachtsales.com

Web: shestakovyachtsales.com/en/

Telephones

USA: +1(954)274-4435

Office hours

Monday – Saturday: **9:00 - 21:00** EDT

Sunday: **closed**

Address



Harbour Towne Marina, 850 NE 3rd St,
STE 213, Dania, FL 33004