

HAMMER TIME — MCKINNA



Builder: MCKINNA

Year Built: 2009

Model: Motor Yacht

Price: PRICE ON APPLICATION

Location: United States

LOA: 62' 0" (18.90m)

Beam: 17' 4" (5.28m)

Cruise Speed: 28 Kts. (32 MPH)

Max Speed: 34 Kts. (39 MPH)

Our experienced yacht broker, Andrey Shestakov, will help you choose and buy a yacht that best suits your needs **HAMMER TIME — MCKINNA** from our catalogue. Presently, at Shestakov Yacht Sales Inc., we have a wide variety of yachts available on our sale's list. We also work in close contact with all the big yacht manufacturers from all over the world.

If you would like to buy a yacht **HAMMER TIME — MCKINNA** or would like help answering any questions concerning purchasing, selling or chartering a yacht, please call **+1(954)274-4435**

TABLE OF CONTENTS

TABLE OF CONTENTS	2
SPECIFICATIONS	4
Overview	4
Basic Information	4
Dimensions	4
Speed, Capacities and Weight	4
Accommodations	4
Hull and Deck Information	5
Engine Information	5
DETAILED INFORMATION	6
Accommodations	6
Master Stateroom, Forward	6
VIP Stateroom, Midship, Starboard	6
Guest Stateroom, Midship Port	6
Pilothouse / Upper Salon	7
Lower Salon	7
Master Head, Portside	8
Guest Head, Midship	8
Galley, Down	9
Aft Deck, Aft of Pilothouse / Upper Salon	9
Deck and Hull	9
Cockpit	10
Swim Platform	10
Engine and Mechanical Equipment	10
Electrical System / Equipment	11
Additional Features / Equipment	11
Exclusions	11
Salesman's Comments	12

Exclusions	12
Disclaimer	12
PHOTOS	13
Profile 2	13
Profile 3	13
Master Stateroom	13
VIP Stateroom	13
Guest Stateroom	13
Pilothouse 1	13
Pilothouse 2	14
Pilothouse 3	14
Pilothouse 4	14
Pilothouse 5	14
Pilothouse 6	14
Pilothouse 7	14
Rear Profile	15
CONTACTS	16
Contact details	16
Telephones	16
Office hours	16
Address	16

SPECIFICATIONS

Overview

"Hammer Time" is ready to go! Recent updates include new interior upholstery in 2012. This Cruising Express is beautiful! She has been meticulously maintained and is ready for her new owner to cruise in spacious luxury!

Basic Information

Category: Motor Yacht

Sub Category: Pilothouse

Model Year: 2009

Year Built: 2009

Country: United States

Vessel Top: 2358

Cockpit: Yes

Dimensions

LOA: 62' 0" (18.90m)

Beam: 17' 4" (5.28m)

Speed, Capacities and Weight

Cruise Speed: 28 Kts. (32 MPH)

Max Speed: 34 Kts. (39 MPH)

Displacement: 66000 Pounds

Water Capacity: 265 Gallons

Fuel Capacity: 1060 Gallons

Accommodations

Total Cabins: 3

Total Heads: 2

Hull and Deck Information

Hull Material: Fiberglass

Engine Information

Engines: 2

Manufacturer: Caterpillar

Model: C18-E 18L

Engine Type: Inboard

Fuel Type: Diesel

DETAILED INFORMATION

Accommodations

Sleeps seven owners and guests in three Staterooms for a total of seven berths. One Master Head with shower, one Guest Head with shower.

Master Stateroom, Forward

- En-Suite Head
- Light beige durable carpet
- Large escape hatch over berth
- Dresser area w/ LCD 20" TV over it
- Recessed ceiling w/ rope lighting & high hats
- Custom decor silk bedspread, pillows & shams
- Cedar lined hanging locker, cabinets & drawers
- Custom pedestal style queen center walkaround berth w/ storage under

VIP Stateroom, Midship, Starboard

- Custom sheets
- 20" flat-screen TV
- Light beige durable carpet
- Recessed ceiling high hats
- (3) Large custom windows
- Private access to shared Guest Head
- Custom double berth w/ storage under
- Custom decor silk bedspread, pillows & sham
- Cedar lined hanging locker, cabinets & drawers

Guest Stateroom, Midship Port

- Custom sheets
- Custom windows
- 20" flat-screen TV
- Recessed high hat lights
- Light beige durable carpet
- Private access to shared Guest Head
- Cedar-lined hanging locker & drawers
- Custom decor silk bedspreads, pillows & shams

- Bunk beds w/ single berth on top & double berth on the bottom

Pilothouse / Upper Salon

- GPS
- Auto pilot
- Chart table
- SAT receivers
- SAT telephone
- (2) VHF radios
- Coast Guard kit
- Sun roof protector
- Furuno RD30 radar
- (2) NAV NET 3-D's
- SAT dish & systems
- SAT TV (6 locations)
- Teak Hi - Lo coffee / dining table
- Teak & stainless steel Helm wheel
- Custom windshield sunscreen cover
- Wesmar bow thruster & stern thruster
- Pioneer 42" Plasma TV on Hi - Lo lift
- High gloss Anigre w/ Maple Burl accent interior
- Navigation console complete w/ digital data display
- Light beige durable carpet w/ custom full fitted snap on runner
- Entered through heavy sea-worthy sliding glass doors from aft Deck
- Port side upon entry is large Heather Earth Brown soft leather L-shaped sofa
- Starboard upon entry is wet bar w/ stainless steel sink, light marble top & (2) bar stools
- Surrounding windows along w/ the windshield & sliding glass doors create a 360 degree view
- Forward to Pilothouse is extremely large sun roof w/ sliding cover located over entire Helm area
- Pompanette brown leather swivel captain chairs w/ swivel arm rest on stainless steel stanchions w/ wide foot rest

Lower Salon

- Smoke detectors
- Six steps down from Pilothouse
- Hunter Douglas silhouette blinds
- Teak Hi - Lo coffee / dining table
- Recessed ceiling w/ decor lighting
- Pioneer 42" Plasma TV on Hi - Lo lift

- Finesse White Cloud headliner by Majilite
- High gloss Anigre wood w/ Maple Burl accent
- Beam Unit 35 central vacuum system w/ accessories
- Titanium color Asko stackable front load washer / dryer
- Brown Heather Earth soft leather sofa (converts to berth)
- Main access to Galley, Master Stateroom and VIP Stateroom
- Light beige durable carpet w/ custom full fitted snap on runner
- Entertainment center w/ Four-Zone Multi Source stereo system w/ speakers, DVD / CD player, receiver and theater speakers

Master Head, Portside

- Marble flooring
- Mirrored ceiling
- Grohe soap dispenser
- Multi spray shower head
- Custom decor glass plate faucet
- Frameless decor rounded glass door
- Marbled Avonite countertop w/ porcelain sink
- Mirrored medicine cabinet over sink & window
- Hunter Douglas silhouette blinds on window over sink
- Accessed from both Companionway & Master Stateroom
- Walk-in stand-up shower w/ teak grate floor & built-in seat
- Designer style Head Hunter Water Jet toilet w/ jet pump technology

Guest Head, Midship

- Marble flooring
- Mirrored ceiling
- Grohe soap dispenser
- Multi-spray shower head
- Hunter Douglas window blind
- Custom decor glass plate faucet
- Frameless decor rounded glass door
- Marbled Avonite countertop w/ porcelain sink
- Mirrored medicine cabinet over sink & window
- Hunter Douglas silhouette blinds on window over sink
- Accessed from both VIP Stateroom & Guest Stateroom
- Designer style Headhunter Water Jet toilet w/ jet pump technology
- Walk-in stand-up shower w/ teak grate floor & built-in seat

Galley, Down

- Grohe brushed nickel faucet
- Kenyon four-burner cook-top
- Teak & holly planked flooring
- Finesse White Cloud headliner by Majilite
- Very large & deep stainless steel Franke sink
- GE Spacemaker II stainless steel microwave oven
- (2) Sub-Zero freezer drawers w/ Anigre wood fronts
- High gloss Anigre wood cabinets w/ brush nickel push knobs
- Bar style Gray marbled Avonite countertop w/ (2) swivel stools
- 700 Series Sub-Zero full size refrigerator w/ Anigre wood front

Aft Deck, Aft of Pilothouse / Upper Salon

- LCD TV
- Teak Deck
- Sound speakers
- Cabinet port side
- Glendenning cable master
- Hardtop overhang w/ lighting
- Large sea worthy double glass doors
- Wrap-around settee w/ storage under
- Cabinet & docking controls (starboard side)
- Fresh water wash down, coil hose in anchor locker
- Access to upper Salon / Pilothouse, down to Cockpit & swim platform

Deck and Hull

- Under water lights
- Exterior step lights
- Heavy duty port lights
- 200' High tensile chain
- Exterior courtesy lights
- Bruce style 110lb. anchor
- (2) Barnegat bow docking lights
- Fiberglass radar arch & sub arch
- Stainless steel roller & chain stopper
- Muir 3500lb. windlass w/ (2) remotes
- Fenders & lines storage lockers on Foredeck
- Sunbrella canvas covers for glass & exterior settees
- Heavy duty stainless steel Deck cleats & hawse holes

- Large double sun pads on Foredeck w/ custom covers
- Full walk-around non-skid Decks w/ stainless steel rails
- White Taco rub rail w/ stainless steel inlay on upper Hull side
- Fiberglass rub rail w/ stainless steel on lower Hull side at the stern

Cockpit

- Teak Deck
- U-Line ice maker
- Kenyon BBQ grill
- Isotherm refrigerator
- Accessed from aft Deck
- Access to swim platform
- Cabinet 2/ sink & storage
- Phantom Glide transom doors
- Access to walk-in Engine Room
- (4) Cockpit speakers on separate volume controls
- Stainless steel transom shower w/ hot & cold water
- Teak steps on both starboard & port for full walk-around access

Swim Platform

- Non-skid Deck
- 30" Swim platform
- Stainless steel rails
- Accessed from Cockpit
- Stainless steel folding ladder

Engine and Mechanical Equipment

- Prop speed
- Spare props
- Water maker
- Stern thrusters
- 6.5ft. Headroom
- Smoke detectors
- 1,000 gallon fuel tanks
- Carbon monoxide detectors
- Multi bilge / high water alarm
- Wesmar V1-12E bow thruster
- Pneumatic - Big Boat Air Horn

- Fresh water wash down in Engine Room
- Trident main engine & generator fuel lines
- 48,000btu Reverse cycle air conditioner / heat
- Groco fittings (sea strainer, thru-Hull, seacock)
- Propellers upgraded to Nibral 5 Blade Fast Prop
- Racor 500 generator fuel filter & water separator
- Engine Room w/ white finish & non-skid flooring
- Windshield defogger / plumbs air / heat for defogger
- Sea Fire fire extinguisher w/ engine & blower shut-offs
- Racor 75 / 1000 MA engine filters & water separator (dual filter)
- Generator Quiet Exhaust separator (separates water from exhaust)
- Main engine underwater exhaust system w/ bypass to transom in FRP
- Thru-Hull exits underwater or under swim platform / no side thru-Hulls
- Twin Diesel I/B Caterpillar Electronic C18-E 18L 1000 bhp. / 1015 mhp. ZF Gear 24 volt start w/ 754 hrs.

Electrical System / Equipment

- Glendenning cable master
- 24v DC monitoring system
- Charles Isolation transformer / ISO boost
- House battery bank: (4) Dekka AGM 8D 24v
- 4kW Charles auto switching charger inverter
- Onan 21.5kW - 60 Hertz generator w/ sound shield
- 50amp Shore power plus extra bow hook-ups 50 amps
- Port engine Gen. start battery bank: (2) Dekka AGM 8D 24v
- Bow thruster battery bank: (2) Optima-Blue Deep Cycle 24v
- Starboard engine Gen. start battery bank: (2) Dekka AGM 8D 24v

Additional Features / Equipment

- Anchor chain
- Sea Tel SAT phone
- LCD TV on aft Deck
- Aft ice maker in Cockpit
- Pompanette double wide seats
- Multi-source w/ speakers (three zone)
- Air conditioning & heat in upper Cockpit
- Teak Deck on upper stairs, lower Cockpit, swim platform

Exclusions

Owner's personal gear and items.

Salesman's Comments

"Hammer Time" is ready to go! Recent updates include new interior upholstery in 2012. This Cruising Express is beautiful! She has been meticulously maintained and is ready for her new owner to cruise in spacious luxury!

Exclusions

Owner's personal belongings.

Disclaimer

The Company offers the details of this vessel or yacht in good faith but cannot guarantee or warrant the accuracy of this information nor warrant the condition of the vessel. A buyer should instruct his representatives, agents, or his surveyors, to investigate such details as the buyer desires validated. This vessel or yacht is offered subject to prior sale, price change, or withdrawal without notice.

PHOTOS

Profile 2



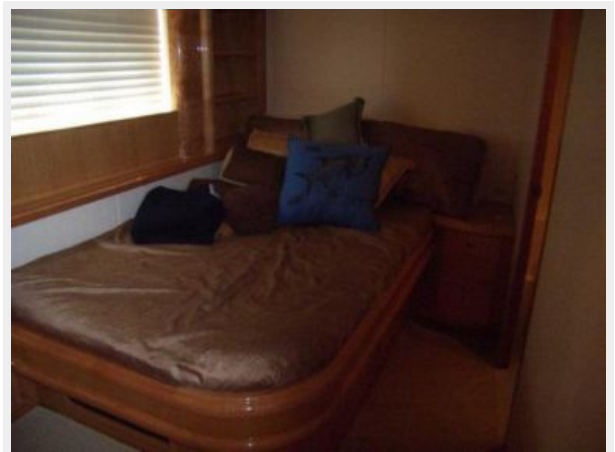
Profile 3



Master Stateroom



VIP Stateroom



Guest Stateroom



Pilothouse 1



Pilothouse 2



Pilothouse 3



Pilothouse 4



Pilothouse 5



Pilothouse 6



Pilothouse 7



Rear Profile



CONTACTS

Andrey Shestakov, leading yacht broker of the sales department of Shestakov Yacht Sales Inc. Shestakov Yacht Sales Inc., the official representative of the Miami/Fort Lauderdale FL headquarters.

Contact details

Email: andrey@shestakovyachtsales.com

Web: shestakovyachtsales.com/en/

Telephones

USA: +1(954)274-4435

Office hours

Monday – Saturday: **9:00 - 21:00** EDT

Sunday: **closed**

Address



Harbour Towne Marina, 850 NE 3rd St,
STE 213, Dania, FL 33004