

HAMMER TIME — MCKINNA



Судостроитель: MCKINNA

Год постройки: 2009

Модель: Моторная яхта

Цена: **ЦЕНА ЯХТЫ ПО ЗАПРОСУ**

Местонахождение: United States

Длина общая: 62' 0" (18.90m)

Ширина: 17' 4" (5.28m)

Крейс. скорость: 28 Kts. (32 MPH)

Макс. скорость: 34 Kts. (39 MPH)

Купить **HAMMER TIME — MCKINNA** а также выбрать подходящую вам яхту из нашего каталога яхт вам поможет опытный яхтенный брокер Андрей Шестаков. На сегодняшний день компания **Shestakov Yacht Sales Inc.** имеет большое количество яхт в собственном списке продаж, а также тесно сотрудничает со всеми крупными яхтенными производителями по всему миру.

Для того чтобы купить яхту **HAMMER TIME — MCKINNA** а также проконсультироваться по любому вопросу связанному с покупкой, продажей, чартером яхт позвоните по телефону **+7(918)465-66-44**.

ОГЛАВЛЕНИЕ

ОГЛАВЛЕНИЕ	2
ХАРАКТЕРИСТИКИ	4
Обзор	4
Основная информация	4
Размеры	4
Скорость, вместимость и масса	4
Размещение	4
Корпус и палуба	5
Информация о двигателе	5
ПОДРОБНОЕ ОПИСАНИЕ	6
Accommodations	6
Master Stateroom, Forward	6
VIP Stateroom, Midship, Starboard	6
Guest Stateroom, Midship Port	6
Pilothouse / Upper Salon	7
Lower Salon	7
Master Head, Portside	8
Guest Head, Midship	8
Galley, Down	9
Aft Deck, Aft of Pilothouse / Upper Salon	9
Deck and Hull	9
Cockpit	10
Swim Platform	10
Engine and Mechanical Equipment	10
Electrical System / Equipment	11
Additional Features / Equipment	11
Exclusions	11
Salesman's Comments	12

Исключения	12
Отказ от ответственности	12
ФОТОГРАФИИ	13
Profile 2	13
Profile 3	13
Master Stateroom	13
VIP Stateroom	13
Guest Stateroom	13
Pilothouse 1	13
Pilothouse 2	14
Pilothouse 3	14
Pilothouse 4	14
Pilothouse 5	14
Pilothouse 6	14
Pilothouse 7	14
Rear Profile	15
КОНТАКТЫ	16
Контактная информация	16
Телефоны	16
Время работы	16
Адрес	16

ХАРАКТЕРИСТИКИ

Обзор

"Hammer Time" is ready to go! Recent updates include new interior upholstery in 2012. This Cruising Express is beautiful! She has been meticulously maintained and is ready for her new owner to cruise in spacious luxury!

Основная информация

Тип судна: Моторная яхта

Подкатегория: Pilothouse

Модельный год: 2009

Год постройки: 2009

Страна: United States

Верх: 2358

Кубрик: Да

Размеры

Длина общая: 62' 0" (18.90m)

Ширина: 17' 4" (5.28m)

Скорость, вместимость и масса

Крейс. скорость: 28 Kts. (32 MPH)

Макс. скорость: 34 Kts. (39 MPH)

Водоизмещение: 66000 Pounds

Вместимость воды: 265 Gallons

Объем топливного бака: 1060 Gallons

Размещение

Всего кают: 3

Всего ком. состава: 2

Корпус и палуба

Материал корпуса: Fiberglass

Информация о двигателе

Двигатели: 2

Производитель: Caterpillar

Модель: C18-E 18L

Тип двигателя: Inboard

Тип топлива: Diesel

ПОДРОБНОЕ ОПИСАНИЕ

Accommodations

Sleeps seven owners and guests in three Staterooms for a total of seven berths. One Master Head with shower, one Guest Head with shower.

Master Stateroom, Forward

- En-Suite Head
- Light beige durable carpet
- Large escape hatch over berth
- Dresser area w/ LCD 20" TV over it
- Recessed ceiling w/ rope lighting & high hats
- Custom decor silk bedspread, pillows & shams
- Cedar lined hanging locker, cabinets & drawers
- Custom pedestal style queen center walkaround berth w/ storage under

VIP Stateroom, Midship, Starboard

- Custom sheets
- 20" flat-screen TV
- Light beige durable carpet
- Recessed ceiling high hats
- (3) Large custom windows
- Private access to shared Guest Head
- Custom double berth w/ storage under
- Custom decor silk bedspread, pillows & sham
- Cedar lined hanging locker, cabinets & drawers

Guest Stateroom, Midship Port

- Custom sheets
- Custom windows
- 20" flat-screen TV
- Recessed high hat lights
- Light beige durable carpet
- Private access to shared Guest Head
- Cedar-lined hanging locker & drawers
- Custom decor silk bedspreads, pillows & shams

- Bunk beds w/ single berth on top & double berth on the bottom

Pilothouse / Upper Salon

- GPS
- Auto pilot
- Chart table
- SAT receivers
- SAT telephone
- (2) VHF radios
- Coast Guard kit
- Sun roof protector
- Furuno RD30 radar
- (2) NAV NET 3-D's
- SAT dish & systems
- SAT TV (6 locations)
- Teak Hi - Lo coffee / dining table
- Teak & stainless steel Helm wheel
- Custom windshield sunscreen cover
- Wesmar bow thruster & stern thruster
- Pioneer 42" Plasma TV on Hi - Lo lift
- High gloss Anigre w/ Maple Burl accent interior
- Navigation console complete w/ digital data display
- Light beige durable carpet w/ custom full fitted snap on runner
- Entered through heavy sea-worthy sliding glass doors from aft Deck
- Port side upon entry is large Heather Earth Brown soft leather L-shaped sofa
- Starboard upon entry is wet bar w/ stainless steel sink, light marble top & (2) bar stools
- Surrounding windows along w/ the windshield & sliding glass doors create a 360 degree view
- Forward to Pilothouse is extremely large sun roof w/ sliding cover located over entire Helm area
- Pompanette brown leather swivel captain chairs w/ swivel arm rest on stainless steel stanchions w/ wide foot rest

Lower Salon

- Smoke detectors
- Six steps down from Pilothouse
- Hunter Douglas silhouette blinds
- Teak Hi - Lo coffee / dining table
- Recessed ceiling w/ decor lighting
- Pioneer 42' Plasma TV on Hi - Lo lift

- Finesse White Cloud headliner by Majilite
- High gloss Anigre wood w/ Maple Burl accent
- Beam Unit 35 central vacuum system w/ accessories
- Titanium color Asko stackable front load washer / dryer
- Brown Heather Earth soft leather sofa (converts to berth)
- Main access to Galley, Master Stateroom and VIP Stateroom
- Light beige durable carpet w/ custom full fitted snap on runner
- Entertainment center w/ Four-Zone Multi Source stereo system w/ speakers, DVD / CD player, receiver and theater speakers

Master Head, Portside

- Marble flooring
- Mirrored ceiling
- Grohe soap dispenser
- Multi spray shower head
- Custom decor glass plate faucet
- Frameless decor rounded glass door
- Marbled Avonite countertop w/ porcelain sink
- Mirrored medicine cabinet over sink & window
- Hunter Douglas silhouette blinds on window over sink
- Accessed from both Companionway & Master Stateroom
- Walk-in stand-up shower w/ teak grate floor & built-in seat
- Designer style Head Hunter Water Jet toilet w/ jet pump technology

Guest Head, Midship

- Marble flooring
- Mirrored ceiling
- Grohe soap dispenser
- Multi-spray shower head
- Hunter Douglas window blind
- Custom decor glass plate faucet
- Frameless decor rounded glass door
- Marbled Avonite countertop w/ porcelain sink
- Mirrored medicine cabinet over sink & window
- Hunter Douglas silhouette blinds on window over sink
- Accessed from both VIP Stateroom & Guest Stateroom
- Designer style Headhunter Water Jet toilet w/ jet pump technology
- Walk-in stand-up shower w/ teak grate floor & built-in seat

Galley, Down

- Grohe brushed nickel faucet
- Kenyon four-burner cook-top
- Teak & holly planked flooring
- Finesse White Cloud headliner by Majilite
- Very large & deep stainless steel Franke sink
- GE Spacemaker II stainless steel microwave oven
- (2) Sub-Zero freezer drawers w/ Anigre wood fronts
- High gloss Anigre wood cabinets w/ brush nickel push knobs
- Bar style Gray marbled Avonite countertop w/ (2) swivel stools
- 700 Series Sub-Zero full size refrigerator w/ Anigre wood front

Aft Deck, Aft of Pilothouse / Upper Salon

- LCD TV
- Teak Deck
- Sound speakers
- Cabinet port side
- Glendenning cable master
- Hardtop overhang w/ lighting
- Large sea worthy double glass doors
- Wrap-around settee w/ storage under
- Cabinet & docking controls (starboard side)
- Fresh water wash down, coil hose in anchor locker
- Access to upper Salon / Pilothouse, down to Cockpit & swim platform

Deck and Hull

- Under water lights
- Exterior step lights
- Heavy duty port lights
- 200' High tensile chain
- Exterior courtesy lights
- Bruce style 110lb. anchor
- (2) Barnegat bow docking lights
- Fiberglass radar arch & sub arch
- Stainless steel roller & chain stopper
- Muir 3500lb. windlass w/ (2) remotes
- Fenders & lines storage lockers on Foredeck
- Sunbrella canvas covers for glass & exterior settees
- Heavy duty stainless steel Deck cleats & hawse holes

- Large double sun pads on Foredeck w/ custom covers
- Full walk-around non-skid Decks w/ stainless steel rails
- White Taco rub rail w/ stainless steel inlay on upper Hull side
- Fiberglass rub rail w/ stainless steel on lower Hull side at the stern

Cockpit

- Teak Deck
- U-Line ice maker
- Kenyon BBQ grill
- Isotherm refrigerator
- Accessed from aft Deck
- Access to swim platform
- Cabinet 2/ sink & storage
- Phantom Glide transom doors
- Access to walk-in Engine Room
- (4) Cockpit speakers on separate volume controls
- Stainless steel transom shower w/ hot & cold water
- Teak steps on both starboard & port for full walk-around access

Swim Platform

- Non-skid Deck
- 30" Swim platform
- Stainless steel rails
- Accessed from Cockpit
- Stainless steel folding ladder

Engine and Mechanical Equipment

- Prop speed
- Spare props
- Water maker
- Stern thrusters
- 6.5ft. Headroom
- Smoke detectors
- 1,000 gallon fuel tanks
- Carbon monoxide detectors
- Multi bilge / high water alarm
- Wesmar V1-12E bow thruster
- Pneumatic - Big Boat Air Horn

- Fresh water wash down in Engine Room
- Trident main engine & generator fuel lines
- 48,000btu Reverse cycle air conditioner / heat
- Groco fittings (sea strainer, thru-Hull, seacock)
- Propellers upgraded to Nibral 5 Blade Fast Prop
- Racor 500 generator fuel filter & water separator
- Engine Room w/ white finish & non-skid flooring
- Windshield defogger / plumbs air / heat for defogger
- Sea Fire fire extinguisher w/ engine & blower shut-offs
- Racor 75 / 1000 MA engine filters & water separator (dual filter)
- Generator Quiet Exhaust separator (separates water from exhaust)
- Main engine underwater exhaust system w/ bypass to transom in FRP
- Thru-Hull exits underwater or under swim platform / no side thru-Hulls
- Twin Diesel I/B Caterpillar Electronic C18-E 18L 1000 bhp. / 1015 mhp. ZF Gear 24 volt start w/ 754 hrs.

Electrical System / Equipment

- Glendenning cable master
- 24v DC monitoring system
- Charles Isolation transformer / ISO boost
- House battery bank: (4) Dekka AGM 8D 24v
- 4kW Charles auto switching charger inverter
- Onan 21.5kW - 60 Hertz generator w/ sound shield
- 50amp Shore power plus extra bow hook-ups 50 amps
- Port engine Gen. start battery bank: (2) Dekka AGM 8D 24v
- Bow thruster battery bank: (2) Optima-Blue Deep Cycle 24v
- Starboard engine Gen. start battery bank: (2) Dekka AGM 8D 24v

Additional Features / Equipment

- Anchor chain
- Sea Tel SAT phone
- LCD TV on aft Deck
- Aft ice maker in Cockpit
- Pompanette double wide seats
- Multi-source w/ speakers (three zone)
- Air conditioning & heat in upper Cockpit
- Teak Deck on upper stairs, lower Cockpit, swim platform

Exclusions

Owner's personal gear and items.

Salesman's Comments

"Hammer Time" is ready to go! Recent updates include new interior upholstery in 2012. This Cruising Express is beautiful! She has been meticulously maintained and is ready for her new owner to cruise in spacious luxury!

Исключения

При продаже яхты исключаются личные вещи владельца.

Отказ от ответственности

Компания предоставляет описание судна или яхты добросовестно, но не может гарантировать точность этой информации, а также не ручается за техническое состояние. Покупатель должен проинструктировать своих агентов или оценщиков исследовать представленную информацию более подробно, по собственному желанию. Продажа судна или яхты, изменение цены или снятие с продажи будет происходить без предварительного уведомления.

ФОТОГРАФИИ

Profile 2



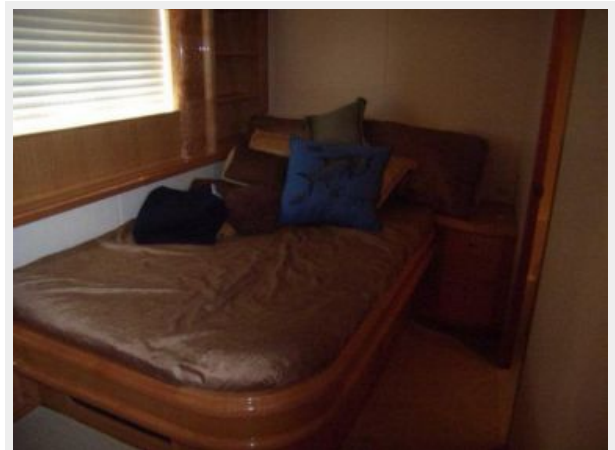
Profile 3



Master Stateroom



VIP Stateroom



Guest Stateroom



Pilothouse 1



Pilothouse 2



Pilothouse 3



Pilothouse 4



Pilothouse 5



Pilothouse 6



Pilothouse 7



Rear Profile



КОНТАКТЫ

Андрей Шестаков (Andrey Shestakov) – ведущий яхтенный брокер отдела продаж яхт и судов компании Shestakov Yacht Sales Inc. Официальный представитель Shestakov Yacht Sales Inc. для русскоговорящих клиентов в центральном офисе компании в Майами/Форт Лодердейл/Флорида/США.

Контактная информация

Email: andrey@shestakovyachtsales.com

Web: shestakovyachtsales.com

Телефоны

Краснодарский край: **+7(918)465-66-44**

США, Майами, Флорида: **+1(954)274-4435**

Время работы

Понедельник – Суббота: **9:00 - 21:00**
EDT

Воскресенье: **Закрыто**

Адрес



Harbour Towne Marina, 850 NE 3rd St,
STE 213, Dania, FL 33004