

## COST PLUS` — ALBEMARLE



**Builder:** ALBEMARLE

**Year Built:** 1989

**Model:** Sport Fisherman

**Price:** PRICE ON APPLICATION

**Location:** United States

**LOA:** 32' 2" (9.80m)

**Beam:** 11' 0" (3.35m)

**Max Draft:** 3' 0" (0.91m)

**Cruise Speed:** 23 Kts. (26 MPH)

**Max Speed:** 28 Kts. (32 MPH)

Our experienced yacht broker, Andrey Shestakov, will help you choose and buy a yacht that best suits your needs **Cost Plus` — ALBEMARLE** from our catalogue. Presently, at Shestakov Yacht Sales Inc., we have a wide variety of yachts available on our sale's list. We also work in close contact with all the big yacht manufacturers from all over the world.

If you would like to buy a yacht **Cost Plus` — ALBEMARLE** or would like help answering any questions concerning purchasing, selling or chartering a yacht, please call **+1(954)274-4435**

# TABLE OF CONTENTS

TABLE OF CONTENTS	2
SPECIFICATIONS	5
Overview	5
Basic Information	5
Dimensions	5
Speed, Capacities and Weight	5
Accommodations	6
Hull and Deck Information	6
Engine Information	6
DETAILED INFORMATION	7
Manufacturer Provided Description	7
Equipment List	7
Disclaimer	7
Exclusions	8
Disclaimer	8
PHOTOS	9
325 Albemarle, stbd side	9
325 Albemarle, cockpit	9
325 Albemarle, stbd side tackle center	9
325 Albemarle, stb stern	9
325 Albemarle, fighting chair	10
325 Albemarle, in-deck fish boxes	10
325 Albemarle, port side bait station	10
325 Albemarle, foredeck	10
325 Albemarle, looking aft	11
325 Albemarle, foredeck 2	11
325 Albemarle, non skid cockpit floor	11
325 Albemarle, salon stereo	11

325 Albemarle, breaker panel	11
325 Albemarle, salon seating	11
325 Albemarle, barrel chair	12
325 Albemarle, Flatscreen HDTV, DVD player	12
325 Albemarle, salon sofa, folds out into sleeper	12
325 Albemarle, looking into the galley	12
325 Albemarle, microwave oven	13
325 Albemarle, sink and refrigerator	13
325 Albemarle, stand up shower	13
325 Albemarle, enclosed head	13
325 Albemarle, master cabin V-berth and storage	14
325 Albemarle, master cabin V-berth and storage 2	14
325 Albemarle, engine access	14
325 Albemarle, stbd engine	14
325 Albemarle, Cummins Facotry Re-Cons	14
325 Albemarle, diesel generator	14
325 Albemarle, battery charger	15
325 Albemarle, port engine	15
325 Albemarle, flybridge hardtop	15
325 Albemarle, helm and dash	15
325 Albemarle, jump seat	15
325 Albemarle, radiobox 1	15
325 Albemarle, radiobox 2	16
325 Albemarle, Raymarine A 65	16
325 Albemarle, Manufaturer Provided Image	16
CONTACTS	17
Contact details	17
Telephones	17
Office hours	17

---

Address

17

---

# SPECIFICATIONS

---

## Overview

---

The 325 Albemarle Convertible is a handsome vessel that packs big-boat features into a small nimble package. Featuring twin Cummins diesels, low hrs on '06 Factory Recons. In the Fall of '10, The bottom was blasted, barrier coated and re-bottom painted. Fighting chair, twin In-Deck fishboxes, bait rigging stations. Factory hardtop with 4 sided enclosure, Radar, GPS, Autopilot, etc. Diesel generator, heated and cooled cabin, roomy salon with barrell chair and pull-out sofa, newer Flat Screen TV, Nice sized head with separate stand-up shower. Galley and master cabin with V-berth.

## Basic Information

---

**Category:** Sport Fisherman

**Sub Category:** Convertible

**Model Year:** 1989

**Year Built:** 1989

**Country:** United States

**Cockpit:** Yes

## Dimensions

---

**LOA:** 32' 2" (9.80m)

**Beam:** 11' 0" (3.35m)

**Max Draft:** 3' 0" (0.91m)

## Speed, Capacities and Weight

---

**Cruise Speed:** 23 Kts. (26 MPH)

**Cruise Speed Range:** 334

**Max Speed:** 28 Kts. (32 MPH)

**Water Capacity:** 30 Gallons

**Holding Tank:** 30 Gallons

**Fuel Capacity:** 300 Gallons

---

## Accommodations

---

**Total Cabins:** 1

**Total Berths:** 4

**Total Heads:** 1

---

## Hull and Deck Information

---

**Hull Material:** Fiberglass

---

## Engine Information

---

**Engines:** 2

**Manufacturer:** Cummins

**Model:** 6BT Diamond Series

**Engine Type:** Inboard

**Fuel Type:** Diesel

---

# DETAILED INFORMATION

---

## Manufacturer Provided Description

---

The Albemarle 325 Convertible is a combination of traditional styling and uncompromised function. As evidenced by the high praise of its owners, the Albemarle 325 Convertible has earned a reputation based on its performance and reliability. The 325's large cockpit is designed for serious fishing, with all the necessary equipment at hand. Below, two couples can overnight in comfort and privacy with all the convenience one would expect in a world-class fishing machine.

## Equipment List

---

**Albemarle 325 Convertible Standard Equipment** - Flush-mounted rod holders - Transom door - Transom and in-deck fish boxes - cooler- baitbox - Rigging station with sink - Fresh and raw water washdown - Molded fiberglass, self-draining cockpit - Non-skid deck - Forward bow hatch - Stand up head with separate shower compartment - Hot water heater - Cabin rod racks - Full V-berth with cushions - Sofa that converts to bed - Reverse cycle AC - Generator with 110V dockside wiring - Venturi Plexiglass windshield - Full instrumentation - Helm designed for flush-mount electronics - Automatic Halon fire protection - AC-DC electrical system with breakers - Hydraulic trim tabs - Hydraulic steering - Hydraulic engine hatch lift - Bow pulpit - Bilge blowers - Twin bilge pumps - Fiberglass chairs with cushions - Anodized aluminum bow rail - Stainless steel bow, stern, and spring cleats - Stainless steel hawse pipes - Heavy duty vinyl rub rail with stainless steel insert - Horn and Compass - Navigation and cockpit lights - Tackle storage

**Albemarle 325 Convertible Optional Equipment** - Anodized Aluminum Hardtop with Full Enclosure, Spreader Lights - Lee Outriggers

## Disclaimer

---

While we attempt to display current and accurate data, this listing may not reflect the most recent transactions or may contain occasional data entry errors. Selling agent makes no warranties, express or implied, regarding the content or availability of the products described herein. All inventory listed is subject to availability and prior sale. Please consult selling agent for details. Prices are quoted for the USA only and may not include transportation, taxes, or other applicable charges. Photographs may be representative only and may vary somewhat from the actual items offered for sale. We will not be responsible for inaccurate data obtained from our site. Please check with your local dealer to ensure that you have the latest information available. Information on this web site could include technical inaccuracies or typographical errors. Changes may be periodically made to the information or the products herein. Questions or comments regarding these policies may be directed to website hosting agent.

---

## Exclusions

---

Owner's personal belongings.

---

## Disclaimer

---

The Company offers the details of this vessel or yacht in good faith but cannot guarantee or warrant the accuracy of this information nor warrant the condition of the vessel. A buyer should instruct his representatives, agents, or his surveyors, to investigate such details as the buyer desires validated. This vessel or yacht is offered subject to prior sale, price change, or withdrawal without notice.



# PHOTOS

**325 Albemarle, stbd side**



**325 Albemarle, cockpit**



**325 Albemarle, stbd side tackle center**



**325 Albemarle, stb stern**



**325 Albemarle, fighting chair**



**325 Albemarle, in-deck fish boxes**



**325 Albemarle, port side bait station**



**325 Albemarle, foredeck**



**325 Albemarle, foredeck 2**



**325 Albemarle, looking aft**



**325 Albemarle, non skid cockpit floor**



**325 Albemarle, salon stereo**



**325 Albemarle, breaker panel**



**325 Albemarle, salon seating**



**325 Albemarle, Flatscreen HDTV, DVD player**



**325 Albemarle, barrel chair**



**325 Albemarle, salon sofa, folds out into sleeper**



**325 Albemarle, looking into the galley**



**325 Albemarle, microwave oven**



**325 Albemarle, sink and refrigerator**



**325 Albemarle, enclosed head**



**325 Albemarle, stand up shower**



**325 Albemarle, master cabin V-berth and storage**



**325 Albemarle, master cabin V-berth and storage 2**



**325 Albemarle, engine access**



**325 Albemarle, stbd engine**



**325 Albemarle, Cummins Facotry Re-Cons**



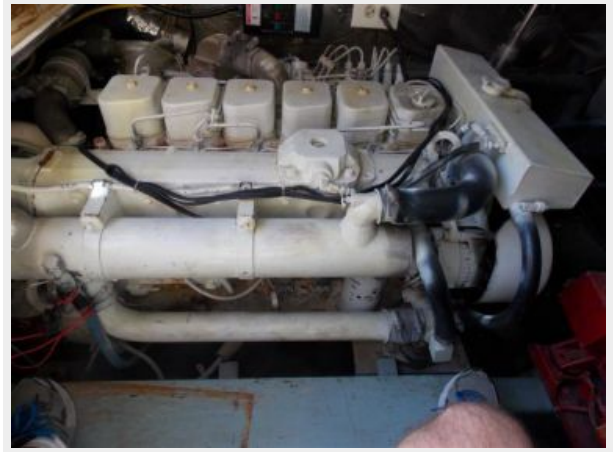
**325 Albemarle, diesel generator**



**325 Albemarle, battery charger**



**325 Albemarle, port engine**



**325 Albemarle, flybridge hardtop**



**325 Albemarle, helm and dash**



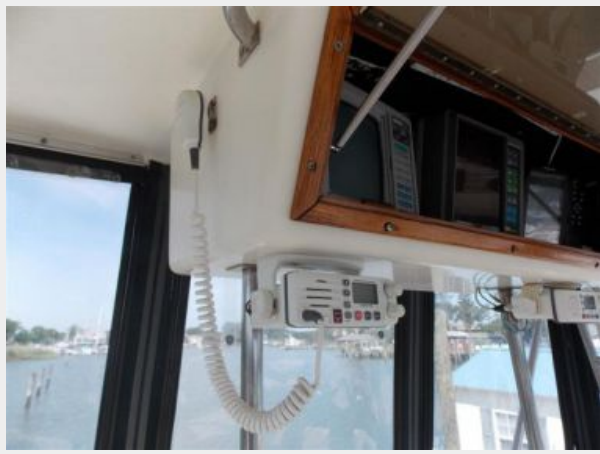
**325 Albemarle, jump seat**



**325 Albemarle, radiobox 1**



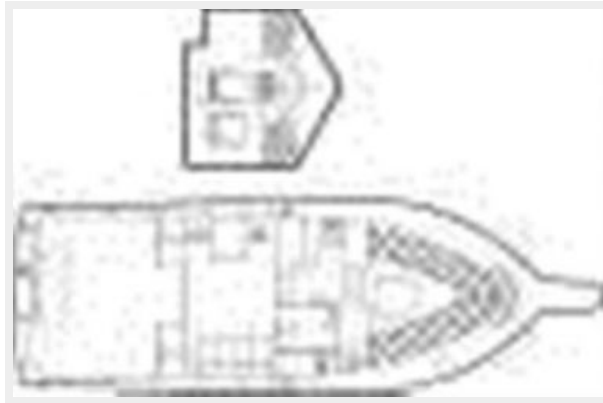
**325 Albemarle, radiobox 2**



**325 Albemarle, Raymarine A 65**



**325 Albemarle, Manufacturer Provided Image**





# CONTACTS

---

Andrey Shestakov, leading yacht broker of the sales department of Shestakov Yacht Sales Inc. Shestakov Yacht Sales Inc., the official representative of the Miami/Fort Lauderdale FL headquarters.

## Contact details

---

Email: [andrey@shestakovyachtsales.com](mailto:andrey@shestakovyachtsales.com)

Web: [shestakovyachtsales.com/en/](http://shestakovyachtsales.com/en/)

## Telephones

---

USA: +1(954)274-4435

## Office hours

---

Monday – Saturday: **9:00 - 21:00** EDT

Sunday: **closed**

## Address

---



Harbour Towne Marina, 850 NE 3rd St,  
STE 213, Dania, FL 33004