

LEILA LINA — CANTIERI DI PISA



Builder: CANTIERI DI PISA

Year Built: 2006

Model: Motor Yacht

Price: PRICE ON APPLICATION

Location: France

LOA: 87' 3" (26.59m)

Beam: 20' 3" (6.15m)

Max Draft: 5' 11" (1.80m)

Cruise Speed: 20 Kts. (23 MPH)

Max Speed: 26 Kts. (30 MPH)

Our experienced yacht broker, Andrey Shestakov, will help you choose and buy a yacht that best suits your needs **LEILA LINA — CANTIERI DI PISA** from our catalogue. Presently, at Shestakov Yacht Sales Inc., we have a wide variety of yachts available on our sale's list. We also work in close contact with all the big yacht manufacturers from all over the world.

If you would like to buy a yacht **LEILA LINA — CANTIERI DI PISA** or would like help answering any questions concerning purchasing, selling or chartering a yacht, please call **+1(954)274-4435**

TABLE OF CONTENTS

TABLE OF CONTENTS	2
SPECIFICATIONS	3
Overview	3
Basic Information	3
Dimensions	3
Speed, Capacities and Weight	3
Accommodations	3
Hull and Deck Information	4
Engine Information	4
PHOTOS	5
CONTACTS	12
Contact details	12
Telephones	12
Office hours	12
Address	12

SPECIFICATIONS

Overview

REMARKS

New Dome and Satellite Dish (2009) SeaTel Electronics tracking system.

Large storage on the bow. Davit has been removed but steel plates are in place for easy re-installment.

Basic Information

Category: Motor Yacht

Model Year: 2006

Year Built: 2006

Country: France

Fly Bridge: Yes

Cockpit: Yes

Dimensions

LOA: 87' 3" (26.59m)

LWL: 77' 9" (23.68m)

Beam: 20' 3" (6.15m)

Max Draft: 5' 11" (1.80m)

Speed, Capacities and Weight

Cruise Speed: 20 Kts. (23 MPH)

Max Speed: 26 Kts. (30 MPH)

Water Capacity: 528.344104 Gallons

Fuel Capacity: 2113.376416 Gallons

Fuel Consumption: 132.086026 Gallons

Accommodations

Total Cabins: 4

Sleeps: 9

Captain Cabin: True

Crew Sleeps: 4

Hull and Deck Information

Hull Material: Composite Fiberglass

Exterior Designer: Cantieri di Pisa

Interior Designer: Cantieri di Pisa

Engine Information

Engines: 2

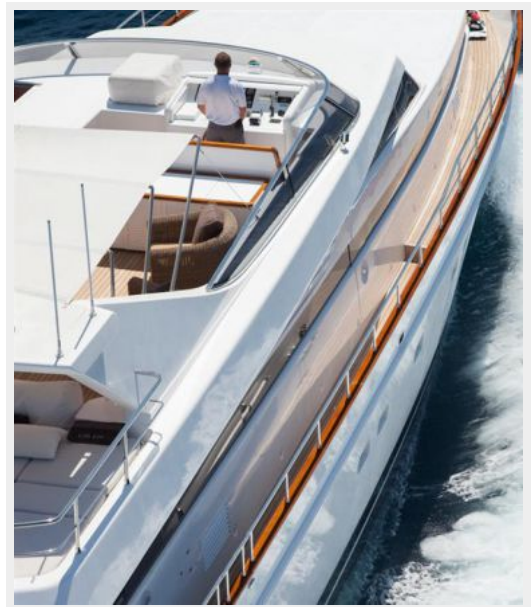
Manufacturer: MTU

Model: 16V 2000 M91

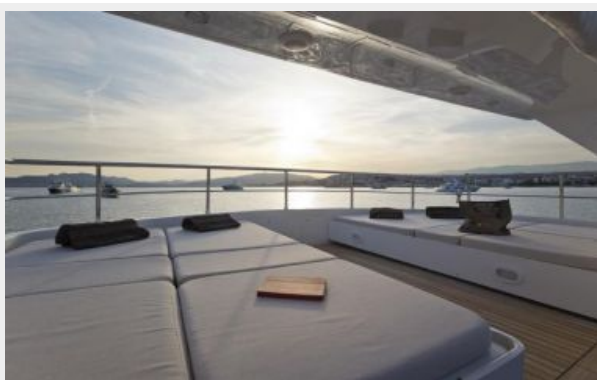
Fuel Type: Diesel

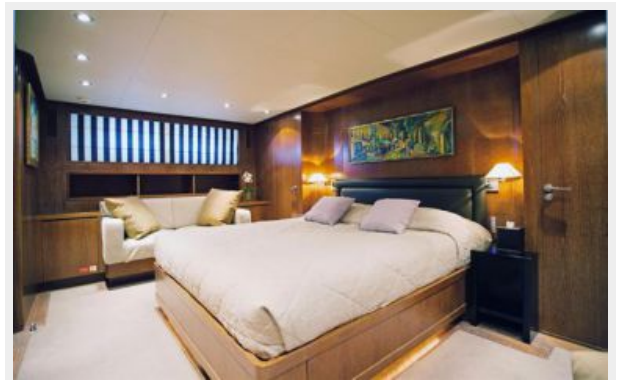
PHOTOS

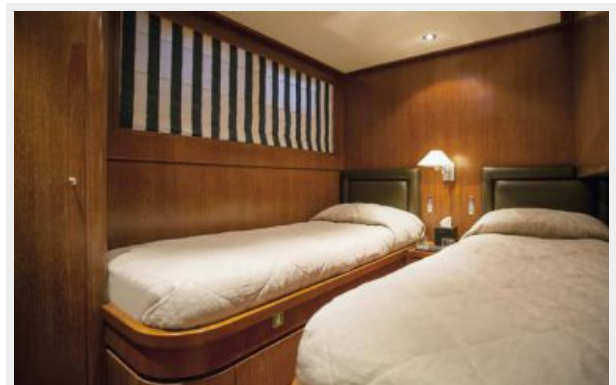


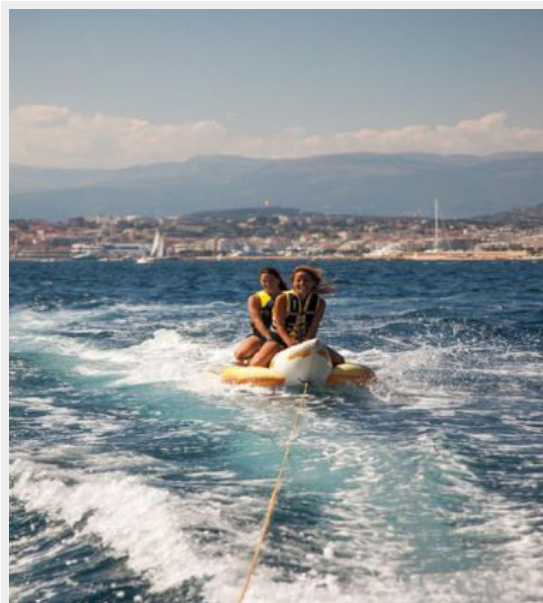












CONTACTS

Andrey Shestakov, leading yacht broker of the sales department of Shestakov Yacht Sales Inc. Shestakov Yacht Sales Inc., the official representative of the Miami/Fort Lauderdale FL headquarters.

Contact details

Email: andrey@shestakovyachtsales.com

Web: shestakovyachtsales.com/en/

Telephones

USA: +1(954)274-4435

Office hours

Monday – Saturday: **9:00 - 21:00** EDT

Sunday: **closed**

Address



Harbour Towne Marina, 850 NE 3rd St,
STE 213, Dania, FL 33004