

## COWBOY — CAPE HORN



**Builder:** CAPE HORN

**Year Built:** 2002

**Model:** Trawler

**Price:** PRICE ON APPLICATION

**Location:** United States

**LOA:** 74' 0" (22.56m)

**Beam:** 18' 2" (5.54m)

**Min Draft:** 5' 5" (1.65m)

**Max Draft:** 6' 5" (1.96m)

**Cruise Speed:** 8 Kts. (9 MPH)

**Max Speed:** 10 Kts. (12 MPH)

Our experienced yacht broker, Andrey Shestakov, will help you choose and buy a yacht that best suits your needs **COWBOY — CAPE HORN** from our catalogue. Presently, at Shestakov Yacht Sales Inc., we have a wide variety of yachts available on our sale's list. We also work in close contact with all the big yacht manufacturers from all over the world.

If you would like to buy a yacht **COWBOY — CAPE HORN** or would like help answering any questions concerning purchasing, selling or chartering a yacht, please call **+1(954)274-4435**

# TABLE OF CONTENTS

TABLE OF CONTENTS	2
SPECIFICATIONS	6
Overview	6
Basic Information	6
Dimensions	6
Speed, Capacities and Weight	6
Accommodations	7
Hull and Deck Information	7
Engine Information	7
DETAILED INFORMATION	8
Walk Through	8
Construction	9
April 2017 - Bottom Job	9
Deck Equipment	9
Engine & Mechanical	10
Engine	10
Utility Room	10
Electronics	10
Cockpit	11
Main Salon	11
Galley	12
Accommodations	12
Flybridge	13
2017 Refit	13
Exclusions	14
Disclaimer	14
PHOTOS	15
Profile	15

---

Profile	15
Profile	15
Profile Aft	15
Forward	15
Aft	15
Aft	16
Electronics	16
Davit	16
Bow	16
Bow	16
Aft	16
Cockpit	17
Cockpit	17
Aft	17
Aft	17
Flybridge	17
Flybridge Seating	17
Flybridge Table	18
Controls	18
Controls	18
Controls	18
Controls	18
Controls	18
Controls	18
Pilothouse	19
Helm Seats	19
Pilothouse Seating	19
Pilothouse Seating	19
Salon	19
Salon	19

---

Salon	20
Salon Aft	20
Salon Seating	20
Salon Table	20
Bar	20
Galley	20
Galley	21
Galley	21
Master Stateroom	21
Master Stateroom	21
Master Stateroom	21
Master Bath	21
Master Bath	22
Master Bath	22
Shower	22
Master Bath	22
Forward Stateroom	22
Forward Stateroom	22
Guest Bath	23
Guest Stateroom	23
Office	23
Guest Bath	23
Washer & Dryer	23
Hall to Engine Room	23
Engine Room	24
Engine Room	24
Engine Room	24
Engine Room	24
Engine Room	24

---

Engine Room	24
Engine Room Controls	25
Generator	25
Generator	25
Flybridge Helm	25
Forward	25
Starboard	25
Tender	26
Tender	26
Tender Helm	26
2017 Bottom Job	26
2017 Bottom Job	26
2017 Bottom Job	27
2017 Bottom Job	27
2017 Bottom Job	27
2017 Bottom Job	27
2017 Bottom Job	27
2017 Bottom Job	27
2017 Bottom Job	27
2017 Bottom Job	28
2017 Bottom Job	28
CONTACTS	29
Contact details	29
Telephones	29
Office hours	29
Address	29

---

# SPECIFICATIONS

---

## Overview

---

The company motto of Cape Horn trawlers is, "First in Safety, Safety First". COWBOY lives up to this motto.

Originally built as a 68' design, modified during construction bringing her overall length to 74'. COWBOY travels the world competing in fishing tournaments. She is built to go where the fish are taking the seas whether kindly or otherwise.

Full paint 2014, Awlgrip Matterhorn White, Yacht and Tender.

## Basic Information

---

**Category:** Trawler

**Model Year:** 2002

**Year Built:** 2002

**Country:** United States

## Dimensions

---

**LOA:** 74' 0" (22.56m)

**Beam:** 18' 2" (5.54m)

**Min Draft:** 5' 5" (1.65m)

**Max Draft:** 6' 5" (1.96m)

## Speed, Capacities and Weight

---

**Cruise Speed:** 8 Kts. (9 MPH)

**Max Speed:** 10 Kts. (12 MPH)

**Max Speed Range:** 3333 Kts.

**Gross Tonnage:** 110 Pounds

**Water Capacity:** 500 Gallons

**Holding Tank:** 200 Gallons

**Fuel Capacity:** 5500 Gallons

---

## Accommodations

---

**Total Cabins:** 3

**Sleeps:** 9

**Total Heads:** 2

**Crew Berths:** 2

---

## Hull and Deck Information

---

**Hull Material:** Steel

**Hull Designer:** Lengkeek Vessel  
Engineering, Halifax, Canada)

---

## Engine Information

---

**Engines:** 1

**Manufacturer:** Cummins

**Model:** N14

**Fuel Type:** Diesel

---

# DETAILED INFORMATION

---

## Walk Through

---

Boarding via the amidships gate on either side, the solid build of COWBOY is instantly felt: waist high gunwales with stainless steel handrails on the main deck and a Portuguese bridge forward. The bow sports a single serious Plow anchor with a vertical foot-operated capstan.

The Aft Deck is laid out with a custom bench seating and a large table. A portside ladder leads to the boat deck and there is a hatch that provides additional entry to the engine room. A stairway to starboard steps down to the fishing cockpit that was added after the build, making this original 68 footer a 74' fishing trawler. The cockpit is outfitted with tackle center, helm station, rod holders, bait freezer, bait well, cutting table and electric Jenn-Air grill.

The Main Salon is entered from the aft deck. A large U-shaped settee to starboard is upholstered in a caramel ultraleather that complements the maple paneling, giving an inviting warmth. A Bob Jenny custom topped table with a sportfish motif fronts the settee. To port are two dark brown Ekornes chairs further adding to the warm ambiance, and a drop-down TV lies above the granite breakfast bar with 2 barstools that serves as the division between salon and galley. Storage cabinetry abounds in both the salon and galley.

From the galley to starboard is a door to the exterior as well as stairways leading below deck and up to the pilothouse.

The pilothouse is raised a few steps above the main deck. There are doors port and starboard to the Portuguese deck and an interior stairway to the boat deck and flybridge. Roomy with excellent visibility, the pilothouse is outfitted with full Navigational equipment for deep-water voyages. Storage areas abound and there is ample seating with a helm chair for two and a large raised settee and captain's berth above.

Electronics are repeated at the helm on the Flybridge. There is an abundance of storage on the flybridge: under the console, in port and starboard cabinets, as well as below the built-in U-shaped settee. A 22' Twin Vee CAT tender is cradled on the boat deck and is raised and lowered with a crane. The tender is powered with two Suzuki 60 hp outboards.

COWBOY's accommodations consist of three double cabins and two heads. The VIP cabin is forward with a double berth, drawer storage and hanging lockers. The Guest Cabin is midship to port and has a double berth and twin Pullman berths. The VIP and guest cabin share a head with shower located portside accessible from the VIP stateroom and hallway. Aft of the head is an office complete with built-in desk and pantry-style storage cabinets.

The Master Suite is full-beam amidships. There is a centerline queen berth, a built-in chest of drawers to port, night stands, a dressing table to starboard and four sets of hanging lockers. An en suite head with Jacuzzi tub is to starboard.



A utility room with laundry is entered from the master and a water-tight door amidships accesses the engine room from the utility room.

2014 - Complete new paint job 2017 - New bottom paint

---

## Construction

---

The Cape Horn trawler is built primarily for trans-ocean voyages with the comfort and safety of its passengers the prime goal. The hull is constructed of steel plate: hull topsides are ¼" plate, and the bottom is 5/16" plate. There is a bulbous bow, and framing amidships consists of 2" x 3/8" flat bar longitudinals on 16" centers, and 5" x 3/8" flat bar frames. The single rudder is of ½" steel plate.

---

## April 2017 - Bottom Job

---

- Vessel hauled, pressure washed, and sanded
- Interlux Ultracote full coat of bottom paint and second coat around chine area
- Prop Speed on Propeller, Prop Shaft, Bow Thruster, and Stern Thruster
- Lip seals on bow thruster and stern thruster checked and both in good condition
- Replaced all 34 zincs
- Inspected Stabilizers seals and in good condition
- Rudder bearings checked and all good
- Keel Cooler cleaned and serviced
- Raw water intakes for generator sets and AC cleaned and serviced
- Transducers cleaned
- Speed paddlewheel removed cleaned and serviced
- Free up and manually operate all seawater inlet valves

---

## Deck Equipment

---

- Boarding gates amidships (port & starboard)
- Security cameras (aft & boat deck)
- Stainless steel ladder from aft deck to boat deck
- MarQuipt boarding ladder
- 350 lb. anchor w/chain - 200' x 5/8" chain
- Vertical windlass w/foot control
- 5,000 lb. capacity heavy duty dinghy Steelhead crane
- Fresh water wash down system
- Mast with Crow's nest
- Custom seating on aft deck
- Custom seating on flybridge with custom table by Bob Jenny

---

## Engine & Mechanical

---

- Cummins N14 44 HP 855 cubic inch marinized diesel engine
- 5500 gallons diesel fuel capacity providing a range of 3,333nm
- Perfect Filter fuel polishing system
- 2 Onan 17 kW generators
- Hydraulic steering
- Hydraulic pump for steering
- Hydraulic pump for windlass/thrusters/davit & wench
- 5,000 pound Steelhead marine davit
- 3,500 pound 20' Twin Vee with 4-stroke Suzukis with 5 hours
- Marine Decking on main deck & cockpit covering board & sole MarQuipt boarding ladder & gangway
- Hydraulic windlass controls and additional foot controls
- Watermaker 70 Gallons Per Hour

---

## Engine

---

Cowboy's engine is rated continuous duty at 1800 rpm which runs her at 10 knots. The owner likes to run her at 1500 rpm where she turns 8 knots. There is a flow scan meter but it has never been calibrated. The owner has looked at the fuel burns at these rpms in the Cummins manual and at 10 knots it is 1.5 gals per nautical mile. Currently the Flow scan reads high and shows 2 gals per mile at 10 knots, maybe 2.2. Using the 1.5 gallon per mile and keeping a 500 gallon reserve this would give you a range of 3,333 miles. The boat has Westmar digital stabilizers.

---

## Utility Room

---

- Water-tight door to engine room
- Asko stacked washer & dryer
- Stainless steel sink and counter
- Tool storage drawers
- Cabinets

---

## Electronics

---

- 3 Garmin GPS MAP 8212 Touchscreen Chartplotters - *Brand New, Never Used*
- Garmin GSD 26 Digital Sonar/Sounder module
- Garmin B265LH Broadband CHIRP BTH T/H Transducer
- Furuno 4.3" Color LCD Display that includes depth & temp
- Robertson AP20 depth, temp & long range Transducer
- Robertson AP22 Autopilot

- Robertson R3000X Autopilot Flybridge Repeater
- Robertson FU35 Autopilot Remote Control
- Robertson FU35 Autopilot FollowUp Steering Lever #1 Wheelhouse
- Robertson FU35 Autopilot FollowUp Steering Lever #2 Flybridge
- Autopilot FollowUp Steering Lever
- Fishing Cockpit Robertson CD100A
- Autopilot Course Detector Pickup for Magnetic Compass Robertson CD135
- Autopilot Course Detector Interphase
- Compass: Robertson Autopilot rated Fluxgate RFC35R with Steel boat Software
- Compass: Steering 5" Barber bracket mount
- SSB: ICOM M710RT22
- SSB: ICOM Automatic Antenna Tuner AT130 SSB Antenna: Morad 28'
- Radar 1: Furuno 1943CNT 11" Screen Color LCD 4' Open Array Radar 2: Furuno M1732C 7" Color Screen LCD 24" Radome NavNet BlackBox Furuno ARP11 Complete with PG1000 Heading Sensor NavNet Sounder Furuno ETR-6
- GPS: Furuno GP-320B with WAAS for NavNet Furuno AIS Wind, Speed & Direction
- Digital Wind & Direction Display Head & Antenna
- Weather Fax: Furuno FAX207
- Weather Fax: Furuno FAX-5 Coupler + 173 WHIP
- Remote Display: Furuno RD30 NavNet
- Satellite TV: KVH TracVision 4 Big Bay 17" Video Monitor Repeater for Furuno
- Video Surveillance Cameras: Engine Room, Fishing Cockpit & Aft Deck
- Joysticks for Bow & Stern
- Thruster Control 3-Way: Pilothouse, Flybridge & Fishing Cockpit
- Rudder Angle Indicators 3-Way: Pilothouse, Flybridge & Fishing Cockpit
- Cummings Panel x 2 Indicators for Engine: Wheelhouse & Flybridge
- 2014 Transducers: 1 for Furuno, 1 for Garmin CHIRP FloScan Fuel Consumption Meter
- FloScan fuel consumption meter

## Cockpit

---

- Dual outriggers
- Bait freezer
- Bait prep with stainless steel sink with hot & cold running water
- Hand-held shower with hot & cold water
- Custom Lure Storage Cabinet
- Jenn-Aire electric grill
- Live bait well
- Swim ladder

## Main Salon

---

- Neutral Tone Décor
- Large U-shaped settee upholstered in caramel ultraleather
- Custom table top - Bob Jenny
- 2 Occasional chairs, dark brown - Ekornes recliners with matching foot stools
- Drop-down SAT TV
- Bookcase
- Granite-topped breakfast bar
- 3 Bar stools

---

## Galley

---

- Sub-Zero Fridge/Freezer 700 TCI with 2 freezer drawers
- Sub-Zero Freezer 700BF with 2 freezer drawers
- Amana CK2T30/E4 ceramic stovetop
- Pot holders for stove
- ASCO 220V stainless steel washer & dryer
- Microwave/convection oven
- Trash compactor
- KitchenAid in-sink disposal
- TECMA Toilets
- Grohe shower/faucets throughout
- 2 Sea-Vac built-in vacuum cleaners
- 20-Gallon electric water heater
- Kidde marine fire extinguishers throughout
- Glendenning shore power cable
- IsoBoost Isolation Transformer Hull Potential Meter
- Granite countertops throughout & Botticino tumbled marble tile
- Stainless steel countertop in utility room
- Custom cabinets in utility room
- 13" TV in Galley

---

## Accommodations

---

Master Suite located full-beam amidships with en suite head and Jacuzzi tub/shower

- Maple interior by Cape Horn Trawler Corporation
- Centerline queen size bed
- Hanging lockers
- Dressing table
- Drawer storage
- 2 Night stands
- Drop-down SAT TV

- 2 port holes

VIP located forward with en suite access to shared guest head and shower

- Queen size bed
- Night stands
- Hanging lockers
- Drawer storage
- 2 port holes

Port Guest Cabin

- Criss-cross beds - twin upper, and full size lower
- Head and shower shared with VIP cabin
- Drawer storage & pantry-style cabinet
- Hanging locker
- 1 port hole

---

## Flybridge

- 1 of the 3 Garmin GPSMAP 8212 with Depth/Sound/Temp & CHIRP
- Furuno VHF
- Furuno Video Sounder 1943 CNT FCB 1100 Dual Frequency Sounder
- 2 Stidd single helm chairs on flybridge

---

## 2017 Refit

- Bottom painted
- Zincs replaced
- Thrusters inspected
- Stabilizers inspected
- Running gear inspected
- Fire extinguisher system certified
- Bilge pumps replaced as needed
- Hydraulic PTO removed and serviced
- New PTO clutch assembly
- PTO Lovejoy coupling replaced
- Stern thruster Lovejoy coupling replaced
- Stern thruster checked and proved
- Bow thruster checked and proved
- Stabilizers checked and proved
- All hydraulics checked and proved
- All hydraulic fluids changed and filters

- Main engine Service interval all fluids and filters
- Aft generator Service interval all fluids and filters
- All fuel filters changed
- Main engine raw water pump replaced
- Main engine and generators belts replaced
- Fuel day tanks cleaned added 300 gallons new fuel
- Main engine and aft generator check and proved
- Fuel transfer system checked and proved
- Fuel fill system check and proved
- Steering system checked and proved all stations
- Shifters checked and proved all stations
- Crane tested and proved
- Batteries checked and proved
- Main engine start batteries needs replaced
- A/C System acid washed,
- New raw water pump installed
- Manifold system check and proved
- Black water system checked and proved
- Freshwater system checked and proved
- Gray water, condensation drain water checked and proved
- Forward toilet repaired aft toilet awaiting parts

---

## Exclusions

Owner's personal belongings.

---

## Disclaimer

The Company offers the details of this vessel or yacht in good faith but cannot guarantee or warrant the accuracy of this information nor warrant the condition of the vessel. A buyer should instruct his representatives, agents, or his surveyors, to investigate such details as the buyer desires validated. This vessel or yacht is offered subject to prior sale, price change, or withdrawal without notice.

# PHOTOS

**Profile**



**Profile**



**Profile**



**Profile Aft**



**Forward**



**Aft**



**Aft**



**Electronics**



**Davit**



**Bow**



**Bow**



**Aft**





**Cockpit**



**Cockpit**



**Aft**



**Aft**



**Flybridge**



**Flybridge Seating**



**Flybridge Table**



**Controls**



**Controls**



**Controls**



**Controls**



**Controls**



**Pilothouse**



**Helm Seats**



**Pilothouse Seating**



**Pilothouse Seating**



**Salon**



**Salon**



**Salon**



**Salon Aft**



**Salon Seating**



**Salon Table**



**Bar**



**Galley**



**Galley**



**Galley**



**Master Stateroom**



**Master Stateroom**



**Master Stateroom**



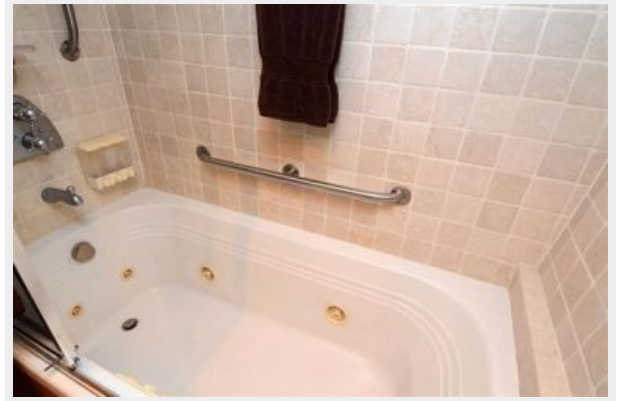
**Master Bath**



**Master Bath**



**Master Bath**



**Master Bath**



**Shower**



**Forward Stateroom**



**Forward Stateroom**



**Guest Bath**



**Guest Stateroom**



**Office**



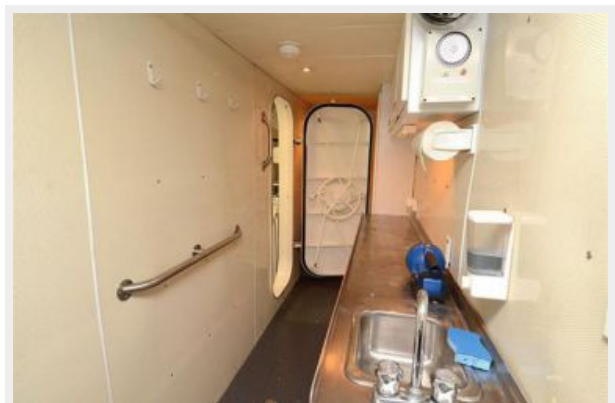
**Guest Bath**



**Washer & Dryer**



**Hall to Engine Room**



**Engine Room**



**Engine Room**



**Engine Room**



**Engine Room**



**Engine Room**



**Engine Room**





**Engine Room Controls**



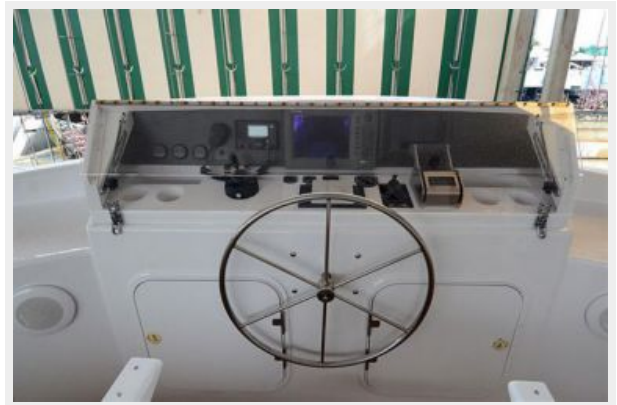
**Generator**



**Generator**



**Flybridge Helm**



**Forward**



**Starboard**



**Tender**



**Tender**



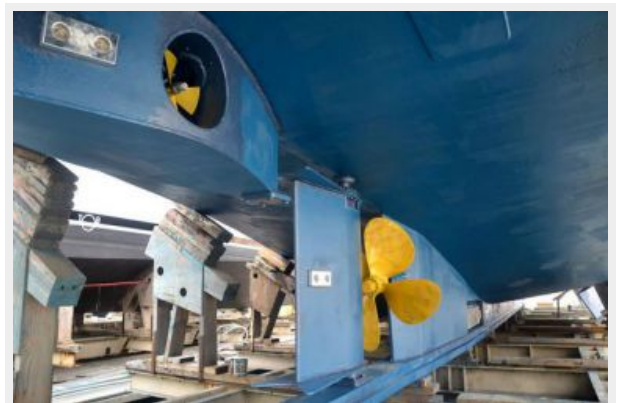
**Tender Helm**



**2017 Bottom Job**



**2017 Bottom Job**



2017 Bottom Job



2017 Bottom Job



2017 Bottom Job



2017 Bottom Job



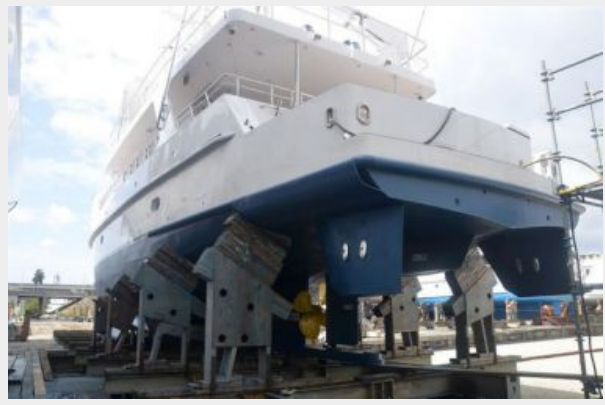
2017 Bottom Job



2017 Bottom Job



**2017 Bottom Job**



**2017 Bottom Job**



# CONTACTS

---

Andrey Shestakov, leading yacht broker of the sales department of Shestakov Yacht Sales Inc. Shestakov Yacht Sales Inc., the official representative of the Miami/Fort Lauderdale FL headquarters.

## Contact details

---

Email: [andrey@shestakovyachtsales.com](mailto:andrey@shestakovyachtsales.com)

Web: [shestakovyachtsales.com/en/](http://shestakovyachtsales.com/en/)

## Telephones

---

USA: +1(954)274-4435

## Office hours

---

Monday – Saturday: **9:00 - 21:00** EDT

Sunday: **closed**

## Address

---



Harbour Towne Marina, 850 NE 3rd St,  
STE 213, Dania, FL 33004