

GALATEA — HYLAS



Судостроитель: [HYLAS](#)

Год постройки: 2001

Модель: Center Cockpit

Цена: ЦЕНА ЯХТЫ ПО ЗАПРОСУ

Местонахождение: United States

Длина общая: 46' 3" (14.10m)

Ширина: 13' 9" (4.19m)

Макс. осадка: 6' 6" (1.98m)

Купить **GALATEA — HYLAS** а также выбрать подходящую вам яхту из нашего каталога яхт вам поможет опытный яхтенный брокер Андрей Шестаков. На сегодняшний день компания **Shestakov Yacht Sales Inc.** имеет большое количество яхт в собственном списке продаж, а также тесно сотрудничает со всеми крупными яхтенными производителями по всему миру.

Для того чтобы купить яхту **GALATEA — HYLAS** а также проконсультироваться по любому вопросу связанному с покупкой, продажей, чартером яхт позвоните по телефону **+7(918)465-66-44**.

ОГЛАВЛЕНИЕ

ОГЛАВЛЕНИЕ	2
ХАРАКТЕРИСТИКИ	5
Обзор	5
Основная информация	5
Размеры	5
Скорость, вместимость и масса	5
Размещение	5
Корпус и палуба	6
Информация о двигателе	6
ПОДРОБНОЕ ОПИСАНИЕ	7
Accommodations	7
Custom specifications to the accommodations include	7
Galley	7
Deck Equipment	8
Navigation Equipment and Electronics	8
Electrical Equipment	9
Sails and Rigging	9
Engine Room and Mechanical Equipment	9
Remarks	10
Исключения	10
Отказ от ответственности	10
ФОТОГРАФИИ	11
Port Side Rear View	11
Starboard Side Rear View	11
Salon Looking Aft	11
Salon Seating and Table	11
Galley View	12
Galley Looking Aft	12

Galley Stove and Refrigeration/Freezer	12
Galley Double Stainless Sink and Counters	12
Nav Station	13
Nav Station	13
Salon Settee	13
Nav Station	13
View of Salon from Galley	14
Master Stateroom Door Looking Out	14
Master Stateroom View 2	14
Master Stateroom View 1	14
Master Stateroom View 3	14
Cedar Closets	14
Master Head	15
Head Shower Door	15
Aft Stateroom	15
Master Head, Sink and Stall Shower	15
2nd Head, Shower and Sink	15
Gauges and Companionway Entrance	15
Helm Station	16
Helm Station Covered	16
Deck	16
Mast	16
Foredeck	16
Port Side Docked	16
Exterior and Decks	17
Forepeak	17
Aft View	17
Swim Scoop Transom	17
Transom and Swim Steps	17

Engine Gauge	17
Engine	18
Sail Plan Line Drawing	18
Layout	18
КОНТАКТЫ	19
Контактная информация	19
Телефоны	19
Время работы	19
Адрес	19

ХАРАКТЕРИСТИКИ

Обзор

“*Galatea*” is a first class example of the popular Hylas 46 model. She has been very lightly used and, with only 400 hours on her main engine, is much like an almost new sailboat. She is very completely equipped, including: • 8 kW generator (only 120 hours) • 2 units of reverse cycle Cruisair • Side Power Bow Thruster • Selden electric in-mast furling • 3 electric winches • Complete electronics Seriously for sale!

Основная информация

Тип судна: Center Cockpit

Подкатегория: Cruising/Racing Sailboat

Модельный год: 2001

Год постройки: 2001

Страна: United States

Размеры

Длина общая: 46' 3" (14.10m)

Длина по ватерлинии: 40' 0" (12.19m)

Ширина: 13' 9" (4.19m)

Макс. осадка: 6' 6" (1.98m)

Скорость, вместимость и масса

Водоизмещение: 27777 Pounds

Вместимость воды: 150 Gallons

Объем топливного бака: 100 Gallons

Размещение

Всего кают: 2

Всего ком. состава: 2

Корпус и палуба

Материал корпуса: Fiberglass

Информация о двигателе

Двигатели: 1

Производитель: Yanmar

Модель: 4-JH3TE

Тип двигателя: Inboard

Тип топлива: Diesel

ПОДРОБНОЕ ОПИСАНИЕ

Accommodations

Standard Hylas 46 interior arrangement with many custom specifications by this knowledgeable owner.

- Cruiseair Reverse Cycle AC/Heat. Two units: 12,000 BTU and 16,000 BTU
- Satin varnished teak interior.
- Louvered cabinets
- Teak and holly cabin sole
- Vacuflush aft head
- Raritan Atlantes forward head with macerator pump and Seafresh system

Custom specifications to the accommodations include

- Additional opening ports
- Lamp Pushbutton latches
- Corian galley countertop
- Two rheostats – galley and main salon
- Cedar interiors in all hanging lockers
- Oceanair Shade/Screen hatch upgrade on forward and aft cabin hatches
- Teak screens for other hatches
- Galley cabinets with louvered doors and rounded corners
- Extra galley lights
- Fender locker raised 6" for more headroom in forward head
- Extra light in forward head
- Forward berth raised slightly to accommodate chart storage
- Bookshelf in forward stateroom
- 4 closed cabinets with removable shelves above berth in forward cabin
- Mast cover with door in main saloon
- Fold down cocktail table w/ Corian top
- Picture light on bulkhead
- L-shaped nav station w/curved bar on swivel chair
- Electrical panel raised slightly to accommodate chart stowage
- Extended cabinet above computer desk w/ 2 AC outlets
- Microwave installed over stove w/ louvered door cover
- Shower stall with Lexan door in aft head

Galley

“Galatea” boasts a wonderful galley, with Corian counters in Sierra Burnt Amber, additional

storage, lights and outlets.

- 12v Adler Barbour Refrigeration. Two large boxes, one with front loading door. The other box is for the freezer compartment.
- Double brushed chrome sinks with hot and cold pressure water
- Foot pump at sink
- Force 10 3 burner propane stove and oven & broiler
- Extra opening port in galley

Deck Equipment

ANCHORING:

- Maxwell 2200 12v electric windlass with foot switches
- 45# CQR with 250' hi-tensile 3/8" chain
- 35# Danforth with 300' 5/8" rode

OTHER DECK EQUIPMENT:

- Teak caprail
- Teak rubrail
- 8 S/S caprail chocks
- 2 additional midship cleats
- Custom stern pushpit with varnished folding seats, extended stanchions, with built-in life raft rack.
- Teak cockpit grates
- Cockpit cushions
- Hatch covers
- Side boarding ladder
- Companionway backrests
- 4 cockpit padeyes for jack lines
- Tricolor masthead light
- Boom light located over cockpit table
- Bimini (2011) and dodger with connecting panel
- Winslow 6 man life raft in custom stern-rail cradle (needs recertification)

Navigation Equipment and Electronics

- Raytheon GPS
- Raytheon Depth sounder and Knot Log
- 6" Ritchie compass
- (2) Standard Horizon VHF's
- Raytheon Auto helm

- Raytheon Chart plotter
- Furuno Radar
- SSB radio
- Epirb

Electrical Equipment

- 12vdc and 110vac systems
- Fisher Panda 8kw generator (120 hrs.)
- 150Amp Alternator with a 3 stage ARS regulator
- 2nd alternator
- Inverter
- Battery charger
- 8D batteries house system: 6 Lifeline AGM glassmat batteries (2012)
- Separate Windlass Battery ties into house system when needed
- Additional AC plugs throughout and in every cabin
- 110Vac 30 amp shore power
- 220 Vac 50 amp shore power
- Red night lights

Sails and Rigging

“Galatea” is equipped with a Selden Electric In-mast Furling System, stepped to the keel. The headstay is fitted with a Furlex 400 XS furling system and the staysail stay has a Furlex 300S system. All of the running rigging was placed in 2014.

Sail inventory: all by Doyle and lightly used: Mainsail, Staysail, Jib

- Selden compression vang
- Lewmar 58 CEST electric winches for primary winches
- Lewmar 48 CST winches for secondary winches
- Lewmar 44 CEST electric winch near companionway for mainsail outhaul, sheeting etc.
- Lewmar 44 CST winches
- Lewmar 18 main halyard winch

Engine Room and Mechanical Equipment

- Side Power 12v bow thruster with toggle switch at helm
- Shaft spurs
- Autoprop fully feathering adjustable prop
- Tank Tender gauges for water/fuel/holding tanks
- Dock pressure water connector

- Groco Hydromatic Sea chest/Sea strainer
- One manual bilge pump
- Two Rule bilge pumps with float switch
- Duel Racor fuel filters with bypass valve
- Electric oil change pump with lines to both engine and genset
- Cable wheel steering with emergency tiller
- Alarm panel monitoring water, oil and exhaust

Remarks

Galatea is a first class example of the popular Hylas 46 model. She has been very lightly used and, with only 350 hours on her main engine, is much like an almost new sailboat.

She is very completely equipped, including:

- 8 kW generator (only 100 hours)
- 2 units of reverse cycle Cruisair
- Side Power Bow Thruster
- Selden electric in-mast furling
- 3 electric winches
- Complete electronics

Seriously for sale!

Исключения

При продаже яхты исключаются личные вещи владельца.

Отказ от ответственности

Компания предоставляет описание судна или яхты добросовестно, но не может гарантировать точность этой информации, а также не ручается за техническое состояние. Покупатель должен проинструктировать своих агентов или оценщиков исследовать представленную информацию более подробно, по собственному желанию. Продажа судна или яхты, изменение цены или снятие с продажи будет происходить без предварительного уведомления.

ФОТОГРАФИИ

Starboard Side Rear View



Port Side Rear View



Salon Looking Aft

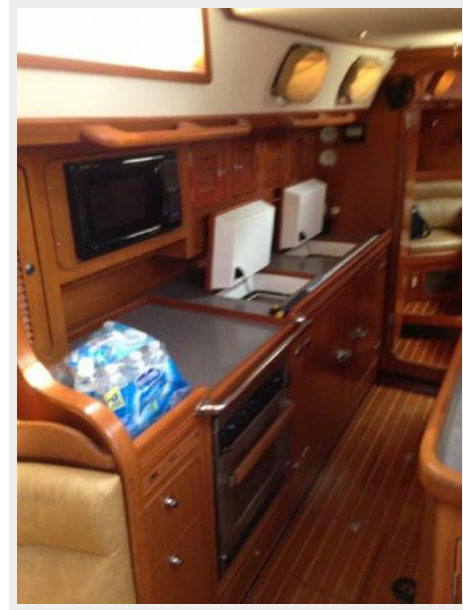


Salon Seating and Table



Galley View

Galley Looking Aft



Galley Stove and Refrigeration/Freezer



Galley Double Stainless Sink and Counters



Nav Station



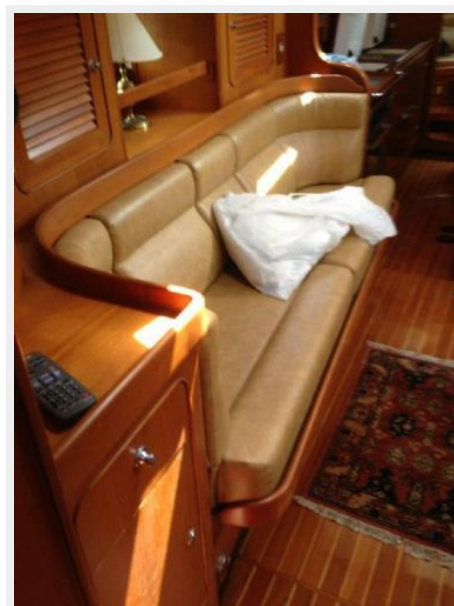
Nav Station



Nav Station



Salon Settee



View of Salon from Galley



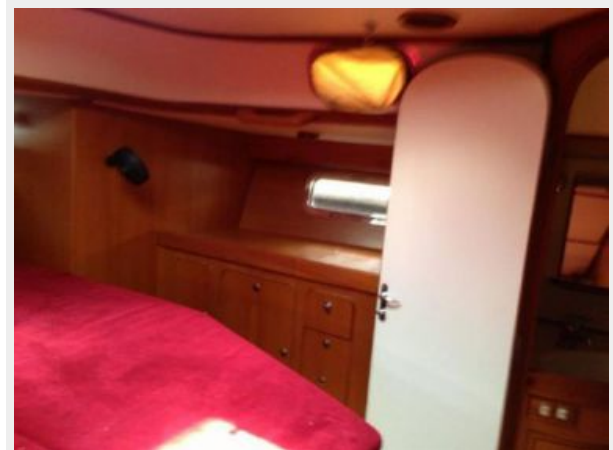
Master Stateroom Door Looking Out



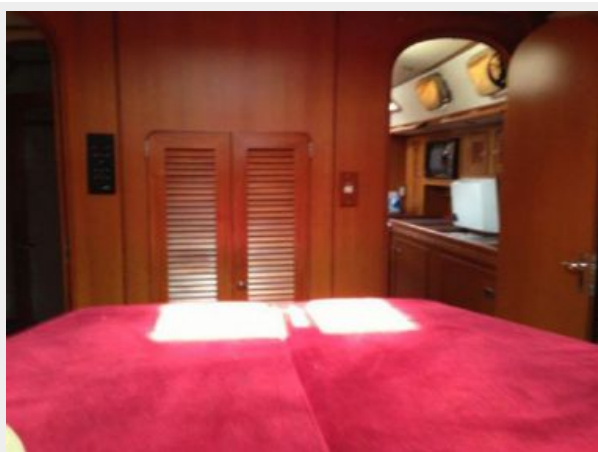
Master Stateroom View 1



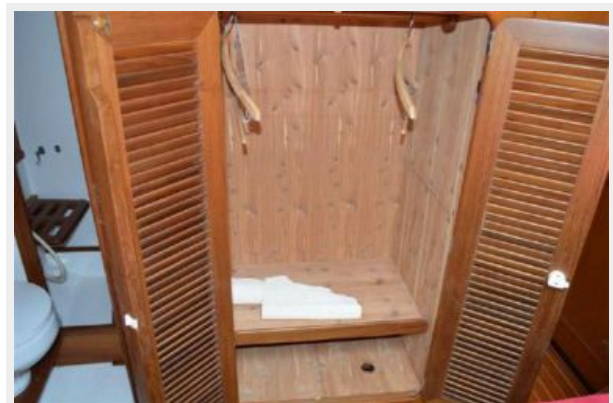
Master Stateroom View 2



Master Stateroom View 3



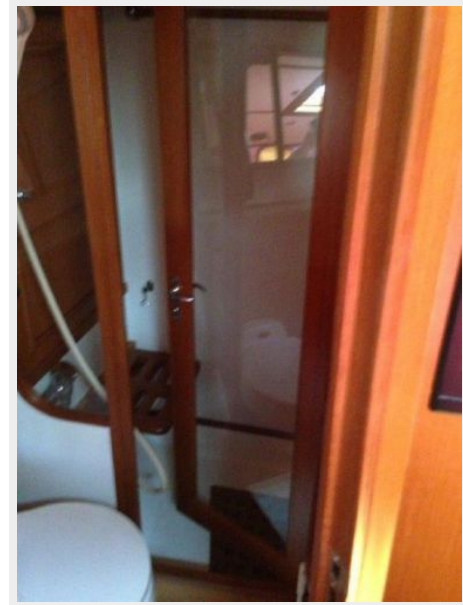
Cedar Closets



Master Head



Head Shower Door



Master Head, Sink and Stall Shower



Aft Stateroom



2nd Head, Shower and Sink



Gauges and Companionway Entrance



Helm Station



Helm Station Covered



Deck



Mast



Port Side Docked



Foredeck



Forepeak



Exterior and Decks



Aft View



Swim Scoop Transom



Transom and Swim Steps



Engine Gauge



Engine



Sail Plan Line Drawing



Layout



КОНТАКТЫ

Андрей Шестаков (Andrey Shestakov) – ведущий яхтенный брокер отдела продаж яхт и судов компании Shestakov Yacht Sales Inc. Официальный представитель Shestakov Yacht Sales Inc. для русскоговорящих клиентов в центральном офисе компании в Майами/Форт Лодердейл/Флорида/США.

Контактная информация

Email: andrey@shestakovyachtsales.com

Web: shestakovyachtsales.com

Телефоны

Краснодарский край: **+7(918)465-66-44**

США, Майами, Флорида: **+1(954)274-4435**

Время работы

Понедельник – Суббота: **9:00 - 21:00**
EDT

Воскресенье: **Закрито**

Адрес



Harbour Towne Marina, 850 NE 3rd St,
STE 213, Dania, FL 33004