

VENTURE — OYSTER MARINE LTD



Судостроитель: OYSTER MARINE LTD

Год постройки: 2001

Модель: Палубный парусник

Цена: **ЦЕНА ЯХТЫ ПО ЗАПРОСУ**

Местонахождение: United States

Длина общая: 63' 4" (19.30m)

Ширина: 17' 8" (5.38m)

Макс. осадка: 6' 8" (2.03m)

Крейс. скорость: 8 Kts. (9 MPH)

Макс. скорость: 10 Kts. (12 MPH)

Купить **VENTURE — OYSTER MARINE LTD** а также выбрать подходящую вам яхту из нашего каталога яхт вам поможет опытный яхтенный брокер Андрей Шестаков. На сегодняшний день компания **Shestakov Yacht Sales Inc.** имеет большое количество яхт в собственном списке продаж, а также тесно сотрудничает со всеми крупными яхтенными производителями по всему миру.

Для того чтобы купить яхту **VENTURE — OYSTER MARINE LTD** а также проконсультироваться по любому вопросу связанному с покупкой, продажей, чартером яхт позвоните по телефону **+7(918)465-66-44**.

ОГЛАВЛЕНИЕ

ОГЛАВЛЕНИЕ	2
ХАРАКТЕРИСТИКИ	5
Обзор	5
Основная информация	5
Размеры	5
Скорость, вместимость и масса	6
Размещение	6
Корпус и палуба	6
Информация о двигателе	6
ПОДРОБНОЕ ОПИСАНИЕ	7
Remarks	7
Accommodations and Layout	7
Entertainment Equipment	10
Electrical System	10
Electronics and Navigation Equipment	11
Engine/Mechanical Equipment	11
Hull and Construction	12
Rigging and Sails	13
Deck Equipment	14
Canvas	15
Safety Equipment	15
Exclusions	15
Исключения	15
Отказ от ответственности	16
ФОТОГРАФИИ	17
Sailing	17
At Dock	17
Saloon Dining	17

Saloon to Port	17
Saloon Port Settee	17
Galley	17
Owner's Cabin, Aft	18
Guest Cabin	18
Guest Cabin	18
Guest Cabin	18
Guest Head	19
Bow	19
Foredeck Hatches	19
Foredeck to Aft	19
Deck Saloon	19
Deck Saloon	19
Mast with Rigging	20
Standing Rigging	20
Winches	20
Cockpit	20
Cockpit to Port	20
Cockpit to Aft	20
Stbd. Helm Instrumentation	21
Port Helm Instrumentation	21
Under Sail	21
Aft Deck	21
Spinnaker Up	21
Aft Port Quarter	21
Shoal Line Drawing	22
КОНТАКТЫ	23
Контактная информация	23
Телефоны	23

Время работы	23
Адрес	23

ХАРАКТЕРИСТИКИ

Обзор

VENTURE is a well-cared-for Oyster 62 featuring a shoal draft of 6'-8" and fully battened carbon fiber mast. The boat performs easily with electric and hydraulic sail handling and new Quantum Fusion Membrane sails that are only three seasons old. The four-stateroom interior is high-gloss teak.

The Owner, who is the second owner, has continued to employ the original Captain, so care of the yacht has been consistent. In spring, 2018, the Perkins main engine was removed from the boat and completely rebuilt by DePaul Diesel of Portsmouth, RI. During this same mechanical refit, the generator was replaced with new in May, 2018.

Always updated when needed, VENTURE is a turn-key boat, worthy of inspection.

YouTube Link (entitled VENTURE New Quantum Sails):

YouTube Link (entitled Oyster 62 for Sale/Walk-through):

Основная информация

Тип судна: Палубный парусник

Подкатегория: Крейсерская яхта

Модельный год: 2001

Год постройки: 2001

Страна: United States

Верх: Dodger

Кубрик: Да

Размеры

Длина общая: 63' 4" (19.30m)

Длина по ватерлинии: 55' 11" (17.04m)

Ширина: 17' 8" (5.38m)

Макс. осадка: 6' 8" (2.03m)

Скорость, вместимость и масса

Крейс. скорость: 8 Kts. (9 MPH)

Макс. скорость: 10 Kts. (12 MPH)

Водоизмещение: 73303 Pounds

Вместимость воды: 333 Gallons

Объем топливного бака: 528 Gallons

Размещение

Всего кают: 3

Всего коек: 4

Спальные места: 10

Всего ком. состава: 3

Корпус и палуба

Материал корпуса: Fiberglass

Материал палубы: Teak

Комплектация корпуса: Bulb Keel

Цвет корпуса: Flag Blue

Отделка корпуса: Fiberglass

Дизайнер корпуса: Rob Humphreys and
The Oyster Design Group

Информация о двигателе

Двигатели: 1

Производитель: Perkins

Модель: M225Ti

Тип двигателя: Inboard

Тип топлива: Diesel

ПОДРОБНОЕ ОПИСАНИЕ

Remarks

VENTURE is a well-cared-for Oyster 62 featuring a shoal draft of 6'-8" and fully battened carbon fiber mast. The boat performs easily with electric and hydraulic sail handling and new Quantum Fusion Membrane sails that are only three seasons old. The four-stateroom interior is high-gloss teak.

The Owner, who is the second owner, has continued to employ the original Captain, so care of the yacht has been consistent. In spring, 2018, the Perkins main engine was removed from the boat and completely rebuilt by DePaul Diesel of Portsmouth, RI. During this same mechanical refit, the generator was replaced with new in May, 2018.

Always updated when needed, VENTURE is a turn-key boat, worthy of inspection.

Accommodations and Layout

- Seven fixed berths in four cabins, excluding saloon
- Additional three pipe berths, one in each forward cabin and one in forepeak cabin
- Interior joinery finished in hand-rubbed antique gloss varnished crown cut teak
- Modern coordinated styling to interior joinery including:
- Sculpted fiddles and grabrails, shadow gap joinery, solid, shaped teak and stainless steel grab handles, teak and holly sole boards
- Off-white vinyl headlining
- Fabrics by Alcantara, Schumacher, Berger and DuraLee
- Air conditioning to all cabins and heads
- Oceanair "Skyscreens" on all Lewmar deck hatches
- Crema Marfil marble seats and counters in all heads
- Reading lights over each berth
- Lee cloths to all fixed berths and pipe berths and to port settee in saloon

LAYOUT (from Forward):

Forepeak:

- Bunk berth to port, plus pipe berth
- Hanging locker
- Access via deck hatch and starboard cabin
- Watertight bulkhead to chain locker section
- Hella fan

Port Guest Cabin :

- Double berth, plus pipe berth
- Victoria Marine batten system under mattresses for added comfort
- Hanging locker
- Full length mirror inset flush into cabin door
- 12 inch Sharp AQUOS LCD TV
- Hella fan

En Suite Head:

- Vacuflush toilet with freshwater flush
- Separate shower stall
- Crema Marfil marble washbasin surrounds
- Grohe water tap and shower fixtures
- Lockers and mirrored medicine cabinet
- Flush mounted mirrored bulkhead
- Doubles as a 'day head' with access from the saloon

Starboard Guest Cabin:

- Double berth, plus pipe berth
- Victoria Marine batten system under mattresses for added comfort
- Hanging locker
- Full length mirror inset flush into cabin door
- 12 inch Sharp AQUOS LCD TV
- Hella fan

En Suite Head:

- Vacuflush toilet with freshwater flush
- Separate shower stall
- Crema Marfil marble washbasin surrounds and shower seat
- Grohe water tap and shower fixtures
- Lockers and mirrored medicine cabinet
- Flush mounted mirrored bulkhead
- Hella fan

Saloon:

- Custom oval table with inlay crafted by Anita Marquetry
- Settee to starboard
- Tan Alcantara upholstery with crew covers
- Horizontal wine bottle storage in table pedestal
- Outboard of settee are four lockers and a central shelf to the hullport
- Settee to port
- (4) Lockers and bookcase outboard port
- 37 inch Sharp AQUOS LCD television mounted on hide-away lift on port side

- Splendide washer/dryer in cabinet forward to port
- All saloon windows are covered with UV reflecting film on the interior surfaces
- (2) Hella fans

Nav Station (to Starboard):

- File drawer under chart table seat
- Custom shaped chart table seat to provide comfort on either tack, as well as when not heeled
- Custom stowage outboard of seat and under seat
- 21 inch NEC LCD display
- Navigation instruments
- Communications systems
- Foul weather hanging locker aft of seat – drains to bilge
- Bookshelves above hanging locker
- Computer printer in locker above seat
- Hella fan

Engine Room:

- Sound insulated
- Fitted with lighting and exhaust fan

Galley (to Port):

- Walk-through style
- Gimballed Force 10 stainless steel stove with (4) burners, broiler and oven
- Avonite cover flush with galley counter for stove when not in use
- Fisher Pakel dish drawer dishwasher
- Microwave oven
- Front-opening refrigerator and top-opening freezer with fitted baskets
- Refrigerator and freezer insulated with 1 inch thick Glacier Bay R50 vacuum panels providing highest efficiency insulation and much larger interiors
- High gloss Avonite with upstands on the galley work surfaces
- Abundant storage in drawers and lockers
- ULine icemaker
- Hella fan

Owner's Cabin:

- Offset queen-sized double berth with custom mattresses
- Victoria Marine batten system under mattresses for added comfort
- Wrap-around vanity table and desk with custom seat to starboard
- Large hanging locker with safe outboard
- Full-length mirror inset flush into cabin door and door to head
- Abundant drawer, locker and shelf space

- Custom six-drawer chest of drawers with television above and stowage behind television
- 20 inch Sharp AQUOS LCD television with Sony A/V receiver and (2) Klipsch speakers in overhead
- (2) Hella fans

En Suite Head:

- Vacuflush toilet with freshwater flush
- Washbasin and very large custom separate shower stall
- Crema Marfil marble washbasin surrounds and shower seat
- Grohe water tap and shower fixtures
- Lockers and mirrored medicine cabinet
- Flush-mounted mirrored bulkheads
- Hella fan
- Exhaust fan

Entertainment Equipment

- Custom SONY ES series A/V system, Blu-Ray/DVD/CD (new 2014) and SEA TEL Satellite TV receiver
- 37 inch Sharp AQUOS LCD television in saloon
- (4) Klipsch speakers in saloon overhead and Mirage subwoofer for surround sound in saloon
- SONY A/V receiver with 20 inch Sharp AQUOS LCD television and one pair Klipsch speakers in overhead of aft cabin
- Each forward cabin has its own 12inch Sharp AQUOS LCD television
- Each cabin can independently select an A/V source from the A/V system

Electrical System

- 24 V DC electrical ship's supply
- US 110 V AC sockets throughout the boat
- Dedicated 24 V DC engine start battery giving 88 amp hours
- Dedicated 12 V DC generator start battery giving 100 amp hours
- Domestic/engine battery bank 'emergency link'
- Domestic batteries capacity to 820 amp hours
- (2) 85 amp hour batteries dedicated solely to computer and navigation systems
- (2) 100 amp Mastervolt MASS 24 V battery chargers
- Shorepower with Hubbell socket and 50 amp power cable
- Mastervolt DAKAR 3000 watt inverter
- 500 watt inverter dedicated to computer and printer
- 1000 watt inverter dedicated to ice maker
- Dual fresh water pressure pump system with pump overrun cut-off switch

- Red Xenon night lights at cabin sole, steps and overhead throughout
- Pair of 110 V lights in engine room
- Waterproof 110 V double socket in lazarette

Electronics and Navigation Equipment

- SIRS Major 150 mm (6") compass flush-mounted on each pedestal
- Raymarine ST60 sailing instruments
- Wind, depth, speed, tridata, magnified wind and multist
- ST6002 autopilot with controls at port helm, nav station and (1) hand-held remote with socket at companionway instrument pod
- Custom MOB system with MOB buttons at each helm, at companionway instrument pod and at nav station. Pushing a button automatically launches one or both Jon Bouys and sets MOB marks on both GPS units
- Raymarine E Series 12" radar at nav station (2012)
- Raymarine E Series radar repeater at starboard helm (2012)
- Questus self-leveling radar mount
- (2) Raymarine DGPS receivers
- (2) Toshiba Tecra 8200 computers running Nobletec & Maptec software
- 21 inch NEC PC display at nav station
- 15 inch Raymarine LCD portable display linked to PC nav computers
- Vitronix cockpit VHF loudspeaker with selector switch for SSB
- (2) Icom VHF transceivers with independent antennas
- Icom 810SSB transceiver with Icom automatic antenna tuner
- Globalstar Satellite phone
- Raytheon Ray430 hailer with automatic foghorn

Extensive paper chart inventory :

- New England to the Gulf of Mexico, the Bahamas and Caribbean

Engine/Mechanical Equipment

- Perkins/Sabre M225Ti 6-cylinder diesel engine, removed from boat and rebuilt May, 2018 (150 hrs. as of 9/2018)
- Hurth HSW 630A gearbox giving 2:1 reduction
- 3-Blade very high efficiency, very quiet Bruntons AutoProp propeller
- Ambassador rope cutter on shaft
- Westerbeke 15 kW 240VAC 60 hz generator (new, May, 2018) (249 hrs. as of 9/2018)
- Sleipner 15 hp tunnel bow thruster with port helm pedestal joy stick control
- (4)Cruisair air conditioning units totaling 81 BTU
- Spectra Santa Cruz 24 VDC dual pump watermaker (16 gal. per hour) with plankton and

UV filter

- 88 amp alternator dedicated to engine start batteries
- 175 amp Prestolite alternator dedicated to domestic batteries
- Automatic engine room fire extinguisher
- Dual Racor auxiliary fuel filters with vacuum gauge and manual change
- Racor filters in parallel to allow the engine to run off a single Racor filter if required during service or cleaning
- Dedicated Racor filter for generator
- Fuel polishing system, Allows polishing from either tank to either tank and within either tank
- Hot water heated by engine and by 240VAC heater
- Hot water heater (new, 2018)
- Engine room and pump room are constructed of very high performance materials
- All machinery mountings and compartments designed (installation supervised by Sound Research Laboratories) to ensure VENTURE is an *exceptionally* quiet yacht

Tankage and Plumbing:

- Fuel - 528 U.S. gallons in (2) GRP tanks
- Water - 333 U.S. gallons in (2) GRP tanks
- Tank Tender gauge system for fuel and water
- (3) Maximum sizes Polypropylene holding tanks, each with gravity discharge, WEMA gauge, deck rinse fitting and deck pump-out
- Grey water sump tanks for showers, sinks and washbasins with electric Whale “Gulper” pumps
- Dockside fresh water supply fitting with pressure reducer
- Seagull IV-IF filter with dedicated tap at galley and feed for icemaker
- Dual cross-connected seawater manifold
- (3) Vacuflush toilets with freshwater flush
- FlowScan fuel flow monitor
- Electric bilge pump
- High capacity engine-driven bilge pump
- Manual Whale “Gulper” pump at port helm
- Maximum capacity manual Edson bilge pump

Hull and Construction

- GRP hull is laid up single skin with structural stringers and floors to Lloyds-approved design specification
- Hull is thermal insulated from the deck to the waterline
- Deck structure is molded in GRP with balsa core for strength and insulation, featuring Oyster’s renowned deck saloon profile with eyebrow detail
- Hull color: Awlgrip Flag Blue (2009)
- Bottom barrier coated (2013)

- Fully laid teak decks
- Teak caprail with stainless steel custom fairleads
- Half-round S/S rub rail along entire length of caprail
- Alloy-framed deck saloon windows in toughened tinted glass, with UV filter film applied to interior surfaces, with (2) opening windows forward
- Lewmar silver anodized, alloy-framed hatches
- Gebo alloy-framed opening ports in coachroof sides and opening hullports

Keel:

- Externally attached high-performance bulb keel

Rigging and Sails

Rigging:

- Cutter rig sloop
- White painted Hood carbon fiber mast with Hood Smart Boom Awlgripped (2009)
- Ball bearing luff track system
- Trisail track on mast
- (4) Walker mast steps at gooseneck and (2) at masthead
- Reckmann hydraulic headstay, and inner forestay furling
- Lewmar Commander hydraulic 400 power pack for headsail, staysail and windlass
- Pair of spreader lights, pair of foredeck lights, pair of sail up lights switched at pedestal
- Navtec twin hydraulic backstay, vang and mainsail outhaul
- Carbon fiber spinnaker pole stowed vertically on mast with Sidewinder heel control
- Spinnaker gear complete with all blocks, fittings and running rigging
- No-strike Ion dissipaters (2) at masthead
- Mast step and shrouds connected to keel bolts
- Windex at masthead
- (2) Mobri large radar reflectors on shrouds at 3rd spreaders
- Tri white light with strobe at masthead
- Lopolight steaming light
- Burgee halyard and pig stick

Sails:

- Quantum Fusion Membrane main (new 2014)
- Quantum Fusion Membrane yankee (new 2014)
- Quantum Fusion Membrane staysail (new 2014)
- Doyle asymmetric cruising spinnaker
- North Storm tri-sail and storm jib

Winches:

Lewmar all-chrome self-tailing winches:

- (2) #77 CEST electric primaries
- (2) #54 CEST electric secondaries
- #54 CEST electric mainsheet
- #48 CEST electric halyard winch
- #48 CST manual reefing and halyard winch
- #30 CST traveller winch

Deck Equipment

- Lewmar 3000 hydraulic windlass with control at anchor locker
- Windlass controls at steering console
- 88 lb. polished S/S Lewmar Delta anchor with S/S swivel and 328 feet of 13 mm S/S chain
- Fortress secondary anchor with S/S swivel and 328 feet of nylon rope with chain lead
- Stainless steel emergency tiller
- Leather covers to steering wheels and partial spokes
- Gloss varnished cockpit table w/ icebox in aft section and storage in forward section. Icebox insulated with Glacier Bay 1 inch R50 high efficiency vacuum panels
- Quarter pushpit seats with cushions in stainless steel and teak (new 2014)
- Custom stowage locker under starboard helmsman seat
- Additional S/S mooring cleats under aft quarter pushpit seats
- Wichard folding padeyes in cockpit
- Webbing jack lines
- Stern swim/boarding platform trimmed in laid teak, with a fold-down stainless steel swim/boarding ladder with stainless steel steps with teak treads
- Fresh water anchor and deck wash system
- Hot and cold fresh water deck shower inset into transom
- Additional stern fairleads cut into cap rail at transom with additional cleats
- Tinted acrylic, vertical sliding washboard to companionway
- Mosquito screen in overhead of companionway – stows in saloon overhead
- Gates in lifelines to port and starboard with polished S/S tread plates
- Custom S/S removable boarding ladder with teak treads
- Carbon fiber 3 m (9'-10") Exit Engineering folding passerelle (new 2008) with removable socket in transom steps and fitting for the bow
- S/S fishing rod holders on stern pulpit
- The port fishing rod holder is the mount for a S/S Parker gas-fired grill fueled by small propane cylinders
- Whitall long reach 300 kg davits
- S/S antenna mast at transom for satellite television dome and antennae
- Lazarette with large custom shelves with milk crates
- S/S bar in lazarette for hanging lines
- 'Granny bars' at mast

- S/S guards over mirror-polished S/S dorade vents with white interiors
- Mooring and cockpit cleats in mirror-finish stainless steel

Canvas

- Dodger in tan Sunbrella, with leather-covered stainless steel grabrail (new 2009)
- Bimini in tan Sunbrella with full coverage of cockpit and pedestals (new 2009)
- Cockpit cushions with custom backs (new 2014)
- Padded tan Sunbrella cockpit table cover with openings to allow access
- Wheel/pedestal covers in tan Sunbrella
- Padded backrests to S/S helmsman seats (2014)

Safety Equipment

- (2) Six-person Winslow Ocean life rafts
- (2) Fully-equipped emergency ditch bags each with Icom Handheld VHF transceivers, ACR GPS EPIRBs and ACR SART radar transponders, emergency food and water, space blankets etc.
- (2) Jonbuoys – manual launch or automatic launch by custom MOB system
- (12) Life preservers
- (12) Mustang inflatable pfd's with harness tethers, strobe lights and whistles
- Extensive offshore medical kit
- (11) Fire extinguishers
- Gas cut-off solenoid valve
- Bilge level alarm
- NM75 Norseman hydraulic wire cutters
- Automatic fire extinguisher in engine room
- Red courtesy night lights at floor level, at steps and overhead in galley, nav station and heads

Exclusions

All personal belongings and all other items not expressly listed in the above inventory are excluded from the sale.

Исключения

При продаже яхты исключаются личные вещи владельца.

Отказ от ответственности

Компания предоставляет описание судна или яхты добросовестно, но не может гарантировать точность этой информации, а также не ручается за техническое состояние. Покупатель должен проинструктировать своих агентов или оценщиков исследовать представленную информацию более подробно, по собственному желанию. Продажа судна или яхты, изменение цены или снятие с продажи будет происходить без предварительного уведомления.

ФОТОГРАФИИ

Sailing



At Dock



Saloon Dining



Saloon to Port



Saloon Port Settee



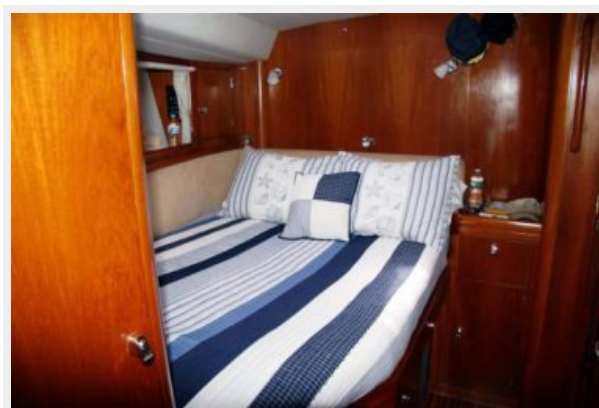
Galley



Owner's Cabin, Aft



Guest Cabin



Guest Cabin



Guest Cabin



Guest Head



Bow



Foredeck Hatches



Foredeck to Aft



Deck Saloon



Deck Saloon



Mast with Rigging



Standing Rigging



Winches



Cockpit



Cockpit to Port



Cockpit to Aft



Stbd. Helm Instrumentation



Port Helm Instrumentation



Aft Deck



Under Sail



Spinnaker Up



Aft Port Quarter



Shoal Line Drawing



КОНТАКТЫ

Андрей Шестаков (Andrey Shestakov) – ведущий яхтенный брокер отдела продаж яхт и судов компании Shestakov Yacht Sales Inc. Официальный представитель Shestakov Yacht Sales Inc. для русскоговорящих клиентов в центральном офисе компании в Майами/Форт Лодердейл/Флорида/США.

Контактная информация

Email: andrey@shestakovyachtsales.com

Web: shestakovyachtsales.com

Телефоны

Краснодарский край: **+7(918)465-66-44**

США, Майами, Флорида: **+1(954)274-4435**

Время работы

Понедельник – Суббота: **9:00 - 21:00**
EDT

Воскресенье: **Закрето**

Адрес



Harbour Towne Marina, 850 NE 3rd St,
STE 213, Dania, FL 33004