

BURRASCA — PERINI NAVI



Судостроитель: [PERINI NAVI](#)

Год постройки: 2003

Модель: Моторный парусник

Цена: ЦЕНА ЯХТЫ ПО ЗАПРОСУ

Местонахождение: Italy

Длина общая: 184' 0" (56.08m)

Ширина: 38' 0" (11.58m)

Мин. осадка: 13' 0" (3.96m)

Макс. осадка: 32' 0" (9.75m)

Крейс. скорость: 13 Kts. (15 MPH)

Макс. скорость: 17 Kts. (20 MPH)

Купить **BURRASCA — PERINI NAVI** а также выбрать подходящую вам яхту из нашего каталога яхт вам поможет опытный яхтенный брокер Андрей Шестаков. На сегодняшний день компания **Shestakov Yacht Sales Inc.** имеет большое количество яхт в собственном списке продаж, а также тесно сотрудничает со всеми крупными яхтенными производителями по всему миру.

Для того чтобы купить яхту **BURRASCA — PERINI NAVI** а также проконсультироваться по любому вопросу связанному с покупкой, продажей, чартером яхт позвоните по телефону **+7(918)465-66-44**.

ОГЛАВЛЕНИЕ

ОГЛАВЛЕНИЕ	2
ХАРАКТЕРИСТИКИ	5
Обзор	5
Основная информация	6
Размеры	6
Скорость, вместимость и масса	6
Размещение	6
Корпус и палуба	6
Информация о двигателе	7
ПОДРОБНОЕ ОПИСАНИЕ	8
Description	8
Overview	9
Capacities	9
Mechanical Equipment	9
Sails and Rigging	11
Navigation Equipment	12
Communication Equipment	13
Deck Equipment	14
Entertainment Equipment	14
Galley and Laundry	15
Security & Safety Equipment	15
Tenders & Watersports Equipment	16
Classification	16
Remarks	16
Broker Comments	16
Исключения	17
Отказ от ответственности	17
ФОТОГРАФИИ	18

Saloon	18
Saloon	18
Owner's Stateroom	18
Dining Saloon	18
Owner's Stateroom	18
Owner's Office	18
Owner's Closet	19
Owner's Bath	19
Owner's Bath	19
Guest Hallway	19
Port Forward Guest Stateroom	20
Port Forward Guest Stateroom	20
Port Forward Guest Stateroom	20
Port Forward Guest Bath	20
Starboard Mid Guest Stateroom	20
Port Mid Guest Stateroom	20
Starboard Mid Guest Bath	21
Wheelhouse	21
Sauna	21
Galley	21
Gymnasium	21
Gymnasium	21
Aft Deck	22
Aft Deck	22
Aft Deck	22
Flybridge	22
Flybridge	22
Flybridge	22
Port Side Deck	23

Starboard Side Deck	23
Foredeck	23
Foredeck	23
Aft Deck	23
Flybridge	23
Flybridge	24
Flybridge	24
Captain's Cabin	24
Crew Mess	24
Laundry	24
Engine Room	24
Engine Room	25
Control Room	25
Lazarette	25
Lazarette	25
Layout	25
Foredeck Tender Storage	25
КОНТАКТЫ	26
Контактная информация	26
Телефоны	26
Время работы	26
Адрес	26

ХАРАКТЕРИСТИКИ

Обзор

On boarding Burrasca via the impressive Passerelle, the sweep of teak decking is broken by the typical Perini stern cockpit built on a lower level than the main deck, and completely covered by the flybridge above. Plenty of room is offered for lounging on its comfortable chairs and sofas, for stylish dining, or evening cocktail parties.

Broad side decks are protected by high bulwarks that lead onto the foredeck, while sturdy stairs lead up to the flybridge with its bimini covered steering and sail control position, sofas and tables, and several different sunbathing areas, plus a spa pool.

Back on the main deck, doors on both sides open from the cockpit into the main saloon, flooded with light from expansive windows on each side. The after section is cozy and sociable, and with free standing furniture one can withdraw to a quiet corner if desired. Forward, the saloon is adjoined by a private office to port and a generously proportioned formal dining room to starboard. The rooms are paneled in cherry and teak, with the grain of the wood varying from one area to the next. They exude an air of solidity and calmness due to the immaculate finish. Also to be found on the main deck are a day head, a bar with service galley and the expansive bridge with navigation area to port.

A spiral staircase between the saloon and dining room leads down to the owner and guests' living quarters which occupy the whole midships section of the lower deck. From the hall, the owner's suite is aft, extending across the full beam of the yacht, with a king size bed, sitting room/TV corner and walk-in wardrobe, plus a vast bathroom with a bathtub and a separate shower stall. An impressive and extensive fitness center, with adjacent sauna is to port equipped with the highest quality exercise machines. It is accessible either from the hall or from the owner's bathroom. Forward are two guest staterooms with queen size beds, and two staterooms with twin single beds and additional Pullman berths, each with their own bathrooms and fitted out in the same style as the owner's quarters.

The well-proportioned crew quarters, separated from the owner and guest areas by a watertight bulkhead, are accessed either from the bridge or from the foredeck. The crew mess and professionally equipped main galley are positioned on opposite sides, while forward is the captain's double ensuite cabin opposite an ensuite cabin with a double and single berth. Two more cabins with twin single berths are forward and share a shower room.

Основная информация

Тип судна: Моторный парусник

Подкатегория: Крейсерский кеч

Модельный год: 2003

Год постройки: 2003

Год обновления: 2014

Страна: Italy

Размеры

Длина общая: 184' 0" (56.08m)

Ширина: 38' 0" (11.58m)

Мин. осадка: 13' 0" (3.96m)

Макс. осадка: 32' 0" (9.75m)

Скорость, вместимость и масса

Крейс. скорость: 13 Kts. (15 MPH)

Макс. скорость: 17 Kts. (20 MPH)

Чистый вес: 497 Pounds

Вместимость воды: 4411.6732684
Gallons

Объем топливного бака: 14529.46286
Gallons

Размещение

Всего кают: 5

Спальные места: 12

Всего ком. состава: 5

Каюта капитана: Да

Спальных мест экипажа: 10

Комм. состав экипажа: 2

Корпус и палуба

Материал корпуса: Aluminum

Материал палубы: Teak

Дизайнер корпуса: Ron Holland

Дизайнер экстерьера: Ron Holland

Информация о двигателе

Двигатели: 2

Производитель: Deutz

Модель: TBD616 V12

Тип двигателя: Inboard

Тип топлива: Diesel

ПОДРОБНОЕ ОПИСАНИЕ

Description

On boarding Burrasca via the impressive Passerelle, the sweep of teak decking is broken by the typical Perini stern cockpit built on a lower level than the main deck, and it is completely covered by the flybridge above. Plenty of room is offered for lounging on its comfortable chairs and sofas. The area is very suitable for stylish dining, or evening cocktail parties.

The broad side decks are protected by high bulwarks that leading onto the foredeck, while sturdy stairs lead up to the flybridge with its bimini covered steering and sail control position, sofas and tables, and several different sunbathing areas, plus a spa pool.

Back on the main deck, doors on both sides open from the cockpit into the main saloon, flooded with light from expansive windows on each side. The aft section is cozy and sociable, and with free standing furniture, allowing one to withdraw to a quiet corner if desired. Forward, the saloon is adjoined by a private office to port and a generously proportioned formal dining room to starboard. The rooms are paneled in cherry and teak, with the grain of the wood varying from one area to the next. They exude an air of solidity and calmness due to the immaculate finish. Also to be found on the main deck are a day head, a bar with service galley and the expansive bridge with navigation area to port.

A spiral staircase between the saloon and dining room leads down to the owner and guests' living quarters which occupy the whole amidships section of the lower deck. From the hall, the owner's suite is aft, extending across the full beam of the yacht, with a king size bed, sitting room/TV corner and walk-in wardrobe, plus a vast bathroom with a bathtub and a separate shower stall. An impressive and extensive fitness center, with adjacent sauna is to port equipped with the highest quality exercise machines. It is accessible either from the hall or from the owner's bathroom. Forward are two guest staterooms with queen size beds, and two staterooms with twin single beds and additional Pullman berths, each with their own bathrooms and fitted out in the same style as the owner's quarters.

The well-proportioned crew quarters, separated from the owner and guest areas by a watertight bulkhead, are accessed either from the bridge or from the foredeck. The crew mess and professionally equipped main galley are positioned on opposite sides, while forward is the captain's double ensuite cabin opposite an ensuite cabin with a double and single berth. Two more cabins with twin single berths are forward and share a shower room.

The aft third of the lower deck is reserved for technical areas and is separated from the forward sections by a watertight and sound proof bulkhead. The large and well laid out machinery room contains the two Deutz main engines and three generators, one of which is purely to provide power to the yacht's sail handling systems. There is ample room for the other equipment; water makers, air conditioning plant, sanitary systems, etc., for all service routines.

Adjoining this area in the stern is the separate engine control room with electrical switch boards,

a large workshop and stowage space for diving and other watersports equipment, with a fold down swim/boarding platform and a staircase to the cockpit above.

Overview

BURRASCA is a 56 meter Perini ketch built in 2003. In the spring and summer of 2014, she completed her 10 year classification society (ABS) survey and has been upgraded. A full list of the works is available on request.

BURRASCA has accommodations for 12 people in the owner's party in 5 ensuite staterooms on the lower deck. A fully equipped gym is also on this level. The main deck superstructure has the main saloon, a separate dining saloon, the owner's office and the pilothouse.

The cockpit, with outdoor dining and relaxing areas, aft of the superstructure is shaded by the flybridge structure. A staircase opens on the port side leading down to the watersports room and the fold down swim, boarding platform.

The flybridge, with all sailing and navigation controls forward, has lounging and relaxing areas including a Jacuzzi. One tender and 5 KTM off-road motorbikes are stored under the foredeck. Crew accommodations provide for up to 10 crew in 4 ensuite cabins forward and one cabin aft.

Capacities

Accommodation:	12 x Guests in 5 x Cabins 2 x Guests cabins have 1 x Pullman berth each
Crew:	10 x Crew in 5 cabins with Engineers cabin aft 1 x Pullman in captain's cabin
Fuel:	55,000 liters / 14,529 US gallons
Fuel Day Tank:	900 liters / 236 gallons
Lube Oil:	1,000 liters/ 264 US gallons for engines
Lube Oil:	750 liters / 198 US gallons for generator
Dirty Oil:	1,000 liters / 264 US gallons
Fresh Water:	12,400 liters / 3,276 US gallons
Grey Water:	2,000 liters / 528 US gallons
Black Water:	2,000 liters / 528 US gallons
Bilge Water:	1,000 liters / 264 US gallons
Desalination Plant:	24,000 liters / 6,340 US gallons / 24h

Mechanical Equipment

Engines:	2 x DEUTZ V12 at 60° - TBD616V12 Diesel cycle four-stroke turbo-charged, after-cooled
Engine Hours:	6000hrs (6000hr overhaul completed 2014)
Maximum Continuous Power:	924 kW @ 2,235 RPM (1240 HP)
Gearbox:	ZF 2560 NR
Ratio:	4.792:1
Propellers:	2 x 3-bladed variable bronze propellers approximately 1,500mm diameter
Bowthruster:	150 Hp -112 kW Trac 28"-380 with 2 x 700mm 5 fixed bladed propeller Controlled from flybridge/wheelhouse
Generators & Electricity:	2 x 155 kW Northern Lights M6125 T 380V 50Hz 1500rpm
Generator Hours:	13,700/13,300
Electricity:	1 x 80 kW Northern Lights M668A 380v 50Hz 1500rpm 380V / 50 Hz 3-phase w/ neutral for machinery power 220V / 50 Hz single-phase for lighting and low power machinery 24V AC/DC for emergency lighting, signaling circuitry, electronic instruments and alarms.
Shore Power:	Cantalupi, transformer 380v-440v three phase with neutral, 50Hz 2 x Shore power cables
Battery -Type:	Gel / lead acid
Main Engine Start:	2 x Groups of 24V
Generator Start:	2 x Groups of 24 V
Service:	Group of 24 V -1,000A/h for 24 V for electronics above main deck 24 V – 200 A/h to supply station above the wheelhouse
Emergency:	24 V for emergency generator
Hydraulics:	Hydraulic Steering
Steering:	CL 2 - B914 MARSILI double cylinder type
Center Board System:	Piston- lifting capacity 100 tons, stainless steel rod type SAF 2205 & Power pack Oleodynamic 5.5 + 5.5 kW with manual pump
Air Conditioning:	Condaria 180.000 total (refrigeration units)
Air Compressors:	2 x Compressors of 30Hp 4 x Refrigeration plant FRASCOLD
Water Heater:	2 x Boilers with 400 liters capacity each
Water Maker:	2 x Idromar each with 12,000 liters/24hrs capacity
Toilet System:	Jet Vacuum System - 2 x 3kW electric pumps,

	8 x Grey water collection tanks
	10 x toilets
Sewage System:	Hamann with 1,000 liters/hour black water 1kW capacity
Centrifugal Fuel Separator:	Alfa Laval MAB 103 B24.
Fuel Separator Filter:	Framm-Facet VFCS 21
Pumps:	Bilge pump Gianneschi & Ramacciotti ("G&R") ACM 502 BT (primary system) Bilge pump Maxi sub G&R (secondary system) Bilge water treatment capacity DVZ 500 VC – "OILMASTER" Sludge tank discharge G&R PQ50 Fire-pump G&R ACM 502 Emergency Fire-pump G&R ACM 502

Sails and Rigging

Rig:	Ketch with a main and mizzen mast
Sails:	Genoa – North Sails Staysail 196 m2 year original, refurbished 2014 Mainsail 460 m2 year original, refurbished 2014 Mizzen sail 300m2 year original, refurbished 2014
Total:	1,585m2
Sail Material:	North Sails
Sail Handling:	Perini Navi designed Semi-automatic system
Sail Controls:	Sail System controls are concentrated on a single console on Flybridge Including maneuverers Furling and unfurling all the sails Sheeting and easing the sheets Jibing maneuverers
Mast:	2 x Perini Navi alloy masts
Mast Height above DWL:	58m Main mast with 5 pairs of spreaders 43m Mizzen mast with 4 pairs of spreaders
Furling Gear:	2 x Furlers for Genoa & Staysail are rigged on an Aluminium profile with single groove – driven by 2 x 380 V AC eclectic motor

Booms:	by Marten spars Ltd booms & Southern Spar Limited masts for Main & Mizzen - Controls are integrated in to Perini Navi sailing System
Winches:	12 x Perini Navi captive reel winches with controls from Wheelhouse and flybridge 2 x Main boom sheets (2:1) 2 x Mizzen boom sheets (2:1) 2 x Genoa sheets Staysail sheet (2:1) Tender hoist sheet Main sail halyard Mizzen sail halyard 2 x Main runners (2:1)
Auxiliary Winches:	Perini Navi -for the following services: Tender launching & recovery pole topping lift 2 x Fore guy runners
Sail Monitoring System:	Perini Navi
Track System:	Antal

Navigation Equipment

Magnetic Compass:	C-Plath Jupiter dia. 180mm
Gyro Compass:	C-Plath Navigat X MK1-GM mod.10 Furuno AD 100 Gyro compass interface
Automatic Pilot:	C-Plath Navipilot V/GM with rudder angle feedback unit
Echo Sounder:	Furuno FCV 600L color video echo-sounder
Radar:	2 x 72nm Furuno FR1510 MKIII radar's with 4' antenna - interfaced with gyrocompass through AD100 Furuno FMD 8010 splash-proof radar remote display on flybridge
GPS:	2 x Furuno GP80 MKIII GPS units
Charts:	2 x Furuno ARPA ARP-10 auto plotter Navi-Sailor 2400 ECS (without ECDIS) TRANSAS PC-chart plotter with dedicated 18" flat panel screen for indoor use.
Weather Fax:	Furuno Fax 208

Log: 2 x Sonic logs mile-counters w/ automatic switching

Wind Instruments: B&G Hercules 890 Series 2000 system
complete with echosounder

Searchlights: 2 x Adjustable (main and mizzen)
spreaders, operated from the flying bridge

Communication Equipment

SATCOM: Saturn Nera Satcom standard B Class 2 for
Voice/Fax/Data with HSD (64kbps) function
thermal paper fax RICOH or similar connected
to Felcom Satcom B
2 x Thrane & Thrane TT3064A Satcom standard
Mini-M for Voice/Fax/Data (2400bps)

VHF Skanti 1000PVHF (wheelhouse) + remote
crew mess answer
ICOM ICM 59E VHF on fly w/ external speaker
ICOM ICM 59E VHF (with independent
spreader mounted antenna) in lazarette

SSB Skanti TRP 7200 SSB radio-phone

GSM Cellular Nokia Premicell European GSM for
Voice/Fax/Data (9600bps)
US analogue or digital Motorola cellular
telephone (voice/fax/data)

Loudhailer Compressed-air fed warning horn with
electrical control Landline/Intercom

Telephone Exchange System Panasonic KXT1232 USA switchboard w/a
max of 40 intercommunicating "internal" lines
Cantalupi communication system equipped with 2 x control units

Monitoring System Autronica

MCA (GMDSS) Jotron 30s mk2 406-121.5 MHz EPIRB
2 x Jotron Tron Sart 9 GHz radar transponders
Skanti CU1000 DSC VHF radio telephone
2 x Skanti 9110 portable VHF's
Skanti Scansat satcom C with PC 9000
terminal, printer and distress push button
1 x ICS NAV-5 Navtex

Internet	Ethernet network connectable to Sail PC Ellipse PC Router enabled internet access through SatCom
----------	--

Deck Equipment

- 2 x Independent vertical axis-type electric anchor windlasses - Nanni
- 2 x Wildcats in bronze and stainless steel warping bells
- 2 x Hawse-pipes with respective hawses will be provided with chain-washing from the fire-fighting plant with remote control operation
- 2 x 6 shackle Lengths of chain, the dimensions of which shall comply with Classification Society requirements.
- 2 x 430 kg Stainless steel Pool-TW type certified fully balanced HHP anchors connected with shackles (Kenter) and swivels to:
- 2 x Lines of high-tensile strength galvanized steel naval chains (grade U2) of 24 mm diameter and link stud of 192m
- 50 Kg al-mg Fortress anchor @ aft peak
- 2 x Harken 1140 ST mooring winches
- 9 x Mooring lines
- Aft cockpit Awning structure
- Swimming Platform
- Hydraulic boarding ladder with lights in its interior paneling
- Hydraulic, telescopic light alloy aft gangway with lighting and intercom

Entertainment Equipment

General Highest Quality Audio / Video system throughout the yacht Home theatre system comprising LINN, DENON AND CRESTRON components TV system is centralized with NAVAL MK20 (TV/FM) Shore connection for TV is provided inside the aft peak **Main Saloon** Flat LED screen 60" Samsung smart TV LINN PEKIN FM/AM Tuner DVD Multi Region DVD Player Programmable Remote Control 5 x LINN AV5120 black Compact 2 way loudspeaker, 3 x Drive units, for use as center speaker, black ash finish 2 x Linn Sizmik Linn Mini active subwoofer

Owner's Quarters Flat plasma 50" VCR Aiwa MVHX 100 VGA socket DVD Multi Region DVD Player LINN AV5120 black Compact 2 way loudspeaker, 3 x Drive units, for use as center speaker, black ash finish 2 x Pair LINN SEKRI In Wall Linn in-built speakers Linn Sizmik Linn Mini active subwoofer 4 x Pair Linn Sweetspot Linn mini loudspeaker LINN RCU Linn keypad control system with display.

Dining LINN KNEKT-R Linn Line Receiver LINN RCU Linn keypad control system with display 2

x LINN LK85 Linn 2 channel power amplifier 6 x Pair Linn Sweetspot Linn mini loudspeaker

Aft Cockpit Flat LED screen 50" Samsung Smart TV DVD Multi Region DVD Player LINN KNEKT-R (Standalone) Linn Line Receiver LINN RCU Linn keypad control system with display Programmable Remote Control 3 x Pair LINN DISKREET Linn speakers 3 x LINN LK140 Linn 2 channel power amplifier 2 x Linn Sizmik Linn Mini active subwoofer

Guest Cabins 21" Loewe 5255 multi-standard color TV for each of the forward guest cabins 42" Fujitsu plasma screen TV for each of the aft guest cabins DVD Multi Region DVD Player LINN RCU Linn keypad control system with display Programmable Remote Control Linn line receiver and power amplifier Pair LINN SEKRIT In-Wall Linn speakers

Gymnasium 21" Sharp LCD flat-screen TV DVD Multi Region DVD Player LINN KNEKT-R (Standalone) Linn Line Receiver Programmable Remote Control LINN LK140 Linn 2 channel power amplifier LINN SEKRIT In-Wall Linn speakers

Captain's Cabin **Crew Mess** 24" Samsung DVD player Philips smart

Fly bridge LINN RCU Linn keypad control system with display Pair LINN SEKRIT In Wall Linn speakers Linn line receiver and power amplifier 4 x Pair LINN DISKREET Linn speaker 2 x Linn Sizmik Linn Mini active subwoofer

Galley and Laundry

Galley Refrigerators/ freezers of various sizes ample adjustable shelving in stainless steel. 3 x Stainless steel sinks of commercially-available size PONSI water mixers Central table with granite top 2 x Macerators Variable speed drive-controlled extractor with stainless steel hood Sliding door with window accessing

Service Galley Commercially available MIELE-type refrigerator Stainless steel under-mounted sink with mixer-tap Miele G7764 dishwasher machine (with hi-speed wash cycle) Hoshizaki IM-25 water cooled ice maker

Laundry 2 x Miele industrial grade washing machines (5kg load) 2 x Miele industrial grade drying machines (6kg load) Miele folding ironing machine type B865 E (position to be defined) Lighting with ceiling lights

Security & Safety Equipment

Fire Fighting CO2 independently, locally activated fire-fighting system in galley High –Fog fire-fighting system with sprinkler system throughout Fire detection system approved by ABS/MCA with audible alarm

Fire-fighting plant will consist of separated fixed systems and a complete system and portable

units in compliance to the ABS certification requirements. The engine room, the forward auxiliary machinery compartment and the accommodations will be monitored by a smoke detection system provided with visual and acoustic alarms in the wheel-house.

Security CCTV System with 1x fixed and 4 x PTZ color video cameras all connected to 2 x Monitors in the wheelhouse and crew mess and selective cabins

Safety 2 x 2014 Inflatable 24-man life-rafts located on the fore deck. First-aid medicine chest (oceanic type table A). 30 x Type-tested life-jackets stowed in the cabins. 2 x Ring life-belts fitted with luminous buoy and smoke signal. Children's life-jackets.

Tenders & Watersports Equipment

Tenders 16' Rigid keel inflatable Castoldi 16' tender 2009 model, powered by a 125 HP YANMAR inboard diesel engine coupled to a reversible Castoldi JET05 water jet system

Crane On the fore deck recess between the 2 x tender bays in compliance with MCA

Classification

The Yacht is built according to the Rules issued by and under the surveillance of the American Bureau of Shipping, with the following classification for a pleasure Yacht:

Malta Cross + A1 Yachting Service - AMS The Builder has kept a log of the Classification Society Surveyor's inspections at the shipyard and details of each inspection. I.O.P.P. (International Oil Pollution Prevention) Certificate Relevant U.S. Coast Guard Anti-pollution Certificate (for non-US flagged Yachts visiting US waters). Relevant MCA Certificate SOPEP manual as required by flag state International convention on Load lines International Convention for Prevention of Collisions at Sea, 1972 and amendments International Convention for prevention of Pollution from ships, Marpol 1973/78, Annex 1, including latest amendments and Annexes IV, V and VI GMDSS Rules, 1992 Flag State rules and regulations IMO resolutions applicable to the vessel. The Yacht is not be certified for navigation in ice-bound areas.

Remarks

Fabio Perini's original idea of building sailing yachts with all of the comforts of motor yachts has been realized to perfection in BURRASCA and her sister ships.

Broker Comments

BURRASCA's 10 year ABS classification survey was completed in the summer of 2014 and extensive servicing, upgrading, and improvements were accomplished at the same time.

BURRASCA is very competitively priced and must be inspected to appreciate all she has to offer.

Исключения

При продаже яхты исключаются личные вещи владельца.

Отказ от ответственности

Компания предоставляет описание судна или яхты добросовестно, но не может гарантировать точность этой информации, а также не ручается за техническое состояние. Покупатель должен проинструктировать своих агентов или оценщиков исследовать представленную информацию более подробно, по собственному желанию. Продажа судна или яхты, изменение цены или снятие с продажи будет происходить без предварительного уведомления.

ФОТОГРАФИИ

Saloon



Saloon



Dining Saloon



Owner's Stateroom



Owner's Stateroom



Owner's Office



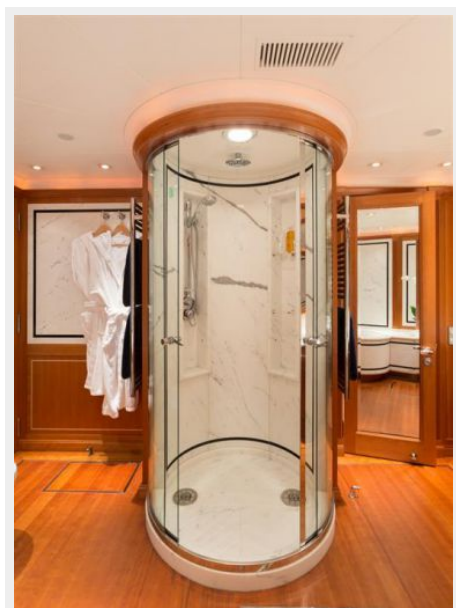
Owner's Closet



Owner's Bath



Owner's Bath



Guest Hallway



Port Forward Guest Stateroom



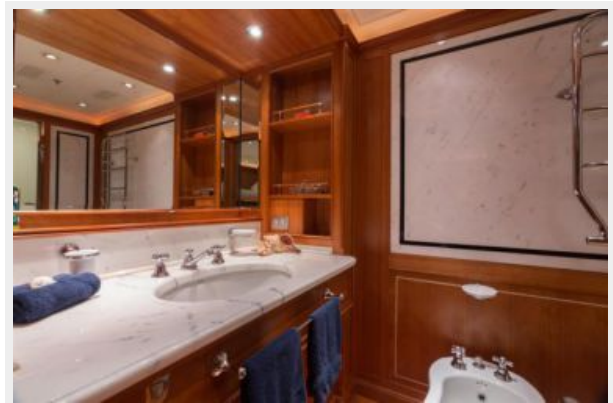
Port Forward Guest Stateroom



Port Forward Guest Stateroom



Port Forward Guest Bath



Port Mid Guest Stateroom



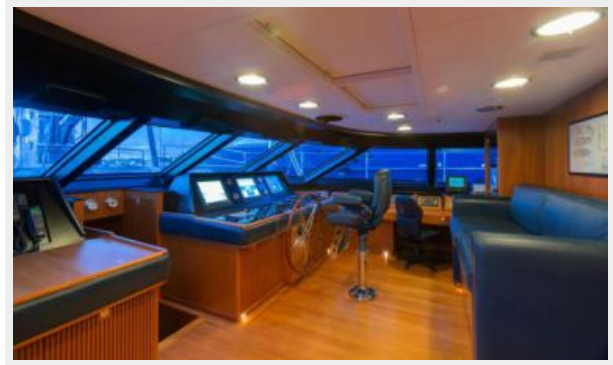
Starboard Mid Guest Stateroom



Starboard Mid Guest Bath



Wheelhouse



Sauna



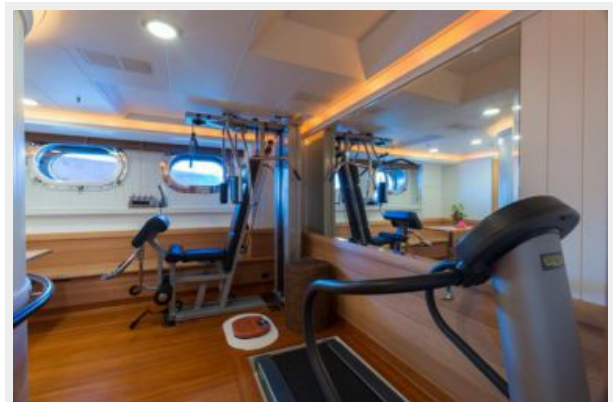
Galley



Gymnasium



Gymnasium



Aft Deck



Aft Deck



Aft Deck



Flybridge



Flybridge



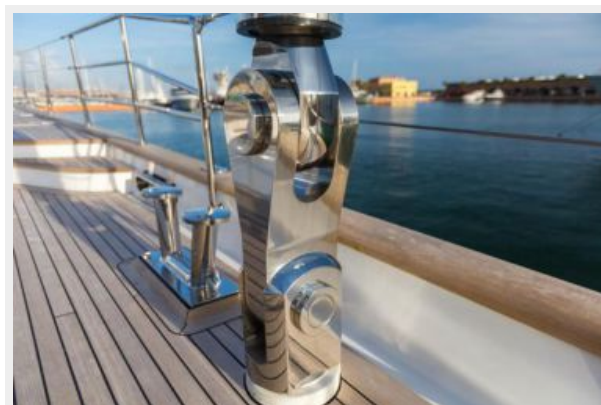
Flybridge



Port Side Deck



Starboard Side Deck

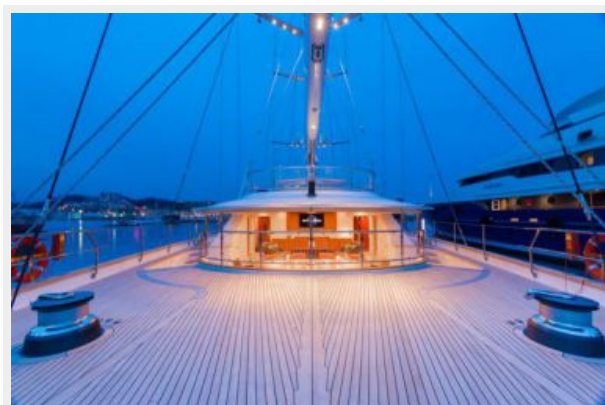


Foredeck

Foredeck



Aft Deck



Flybridge



Flybridge



Flybridge



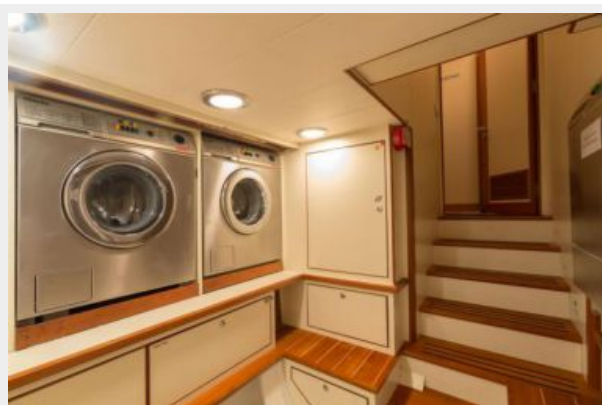
Captain's Cabin



Crew Mess



Laundry



Engine Room



Engine Room



Control Room



Lazarette



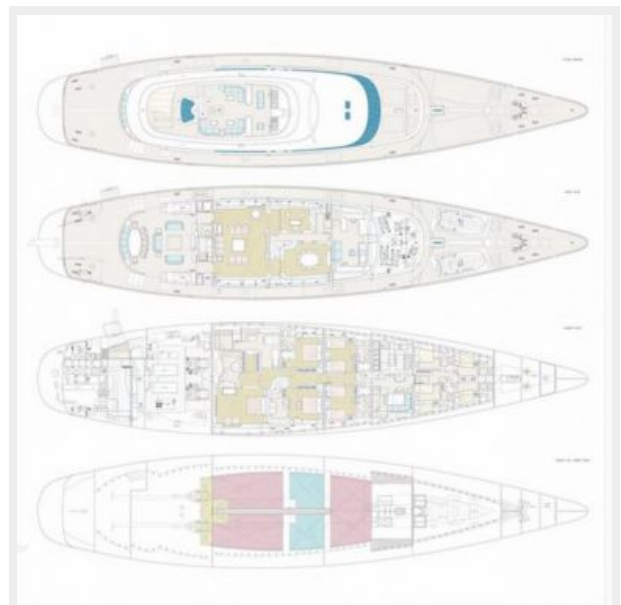
Lazarette



Foredeck Tender Storage



Layout



КОНТАКТЫ

Андрей Шестаков (Andrey Shestakov) – ведущий яхтенный брокер отдела продаж яхт и судов компании Shestakov Yacht Sales Inc. Официальный представитель Shestakov Yacht Sales Inc. для русскоговорящих клиентов в центральном офисе компании в Майами/Форт Лодердейл/Флорида/США.

Контактная информация

Email: andrey@shestakovyachtsales.com

Web: shestakovyachtsales.com

Телефоны

Краснодарский край: **+7(918)465-66-44**

США, Майами, Флорида: **+1(954)274-4435**

Время работы

Понедельник – Суббота: **9:00 - 21:00**
EDT

Воскресенье: **Закрето**

Адрес



Harbour Towne Marina, 850 NE 3rd St,
STE 213, Dania, FL 33004