

SISU — VIKING



Судостроитель: VIKING

Год постройки: 2013

Модель: Катер для спортивной рыбалки

Цена: ЦЕНА ЯХТЫ ПО ЗАПРОСУ

Местонахождение: United States

Длина общая: 70' 8" (21.54m)

Ширина: 19' 7" (5.97m)

Мин. осадка: 5' 6" (1.68m)

Крейс. скорость: 36 Kts. (41 MPH)

Макс. скорость: 42 Kts. (48 MPH)

Купить **SISU — VIKING** а также выбрать подходящую вам яхту из нашего каталога яхт вам поможет опытный яхтенный брокер Андрей Шестаков. На сегодняшний день компания **Shestakov Yacht Sales Inc.** имеет большое количество яхт в собственном списке продаж, а также тесно сотрудничает со всеми крупными яхтенными производителями по всему миру.

Для того чтобы купить яхту **SISU — VIKING** а также проконсультироваться по любому вопросу связанному с покупкой, продажей, чартером яхт позвоните по телефону **+7(918)465-66-44**.

ОГЛАВЛЕНИЕ

ОГЛАВЛЕНИЕ	2
ХАРАКТЕРИСТИКИ	6
Основная информация	6
Размеры	6
Скорость, вместимость и масса	6
Размещение	6
Корпус и палуба	7
Информация о двигателе	7
ПОДРОБНОЕ ОПИСАНИЕ	8
Vessel Walk Through	8
Mezzanine Cockpit	9
Salon	9
Galley	10
Master Stateroom	10
Forward Stateroom	11
Port Guest Stateroom	11
Crew Cabin	11
Engine & Mechanical	12
Flybridge	12
Electronics	13
Hull	15
Decks	15
Remarks	15
Исключения	15
Отказ от ответственности	16
ФОТОГРАФИИ	17
Bow View	17
Port View	17

Transom	17
Bow Pulpit	17
Fighting Chair	18
Transom Door 1	18
Transom Door 2	18
Transom 3	18
Cockpit 1	18
Mezzanine 1	18
Mezzanine 2	19
Steps to Mezzanine	19
Bow Pulpit 1	19
Bow 1	19
Bow 2	19
Bow to FB	19
Port Deck	20
Starboard Deck	20
Hatch to FB	20
FB Looking to Cockpit	20
FB Seating 1	20
FB Seating 2	20
FB Helm 1	21
FB Helm 2	21
FB Helm 3	21
FB Helm 4	21
FB Monitors	21
FB Forward Storage	21
FB Settee Forward	22
FB Radar	22
FB to Bow	22

Mezzanine Hatch	22
Salon 1	22
Salon 2	22
Galley 1	23
Galley 2	23
Galley 3	23
Galley 5	23
Galley 6	23
Galley 7	23
Day Head	24
Galley Dinette	24
Stairs to Companionway	24
Companionway 1	24
Master Entrance	25
Companionway 2	25
Master Stateroom 1	25
Master Stateroom 2	25
Master Head	26
Master Stateroom 3	26
VIP Head	26
VIP Forward	26
Guest Head 1	27
Guest Bunk Stateroom	27
Guest Head 2	27
Washer Dryer	27
Storage Area	28
Electrical Storage Area	28
Crew Quarters	28
ER Entrance	28

ER 1	28
ER 2	28
ER 3	29
ER 4	29
ER 5	29
ER 6	29
Layout	29
ER 7	29
КОНТАКТЫ	30
Контактная информация	30
Телефоны	30
Время работы	30
Адрес	30

ХАРАКТЕРИСТИКИ

Основная информация

Тип судна: Катер для спортивной рыбалки

Подкатегория: Convertible

Модельный год: 2014

Год постройки: 2013

Страна: United States

Верх: 2363

Открытая палуба мостика: Да

Кубрик: Да

Размеры

Длина общая: 70' 8" (21.54m)

Ширина: 19' 7" (5.97m)

Мин. осадка: 5' 6" (1.68m)

Скорость, вместимость и масса

Крейс. скорость: 36 Kts. (41 MPH)

Макс. скорость: 42 Kts. (48 MPH)

Чистый вес: 91 Pounds

Вместимость воды: 365 Gallons

Вместимость сточного бака: 210 Gallons **Объем топливного бака:** 2600 Gallons

Размещение

Всего кают: 3

Спальные места: 8

Всего ком. состава: 4

Каюты экипажа: 1

Спальных мест экипажа: 2

Комм. состав экипажа: 1

Корпус и палуба

Материал корпуса: Fiberglass

Комплектация корпуса: Deep Vee

Цвет корпуса: Snow White

Информация о двигателе

Двигатели: 2

Производитель: MTU

Модель: 16V2000 M94

Тип двигателя: Inboard

Тип топлива: Diesel

ПОДРОБНОЕ ОПИСАНИЕ

Vessel Walk Through

SISU is perhaps most exceptional Sport Fishing Convertible we have ever listed at Woods & Associates! From her sleek styling, *dramatic* interior décor (dark *walnut—high gloss* stained teak wood treatments) and *over the top* amenities & electronics inventory, she must be seen to be fully appreciated. With the 2600 hp MTU engine package, **SISU** cruises at 35 knots with top speeds in excess of 40! With less than 100 total hours use and very lightly fished, this highly custom vessel is truly *better than new*.

Once boarding **SISU** from the 208 square foot cockpit you will notice the unique (and more manageable) Esthec decking, including the mezzanine. All desired accoutrements for tournament or *fun fishing* are provided. The full “sun shade” is a most welcome addition, especially in the tropical Florida climate.

Up 3 steps and enter the *spectacular* main salon thru the electric Stanley door. This is the one & only Viking with the walnut stained teak, which is absolute *yacht quality*. The space planning is well orchestrated featuring an island bar with 3 stools in forward section, separating the fully functional low profile galley. A dinette is across to starboard—including matching walnut table. There is an L shaped chenille & wool - dove gray couch and matching ottoman (with storage) furthest aft to starboard, with on deck powder room in corner across. The material for sconces compliments the furniture and the window treatments are Parchment Silhouettes. The A/V components and computer hard drives are housed in dedicated walk in closet forward of the galley.

Down a curved stairwell to starboard are the 4 cabins, all with ensuite head & shower. The master suite is port amid-ships, featuring a walk around king bed and his & hers closets. Next forward to port is a guest cabin with bunk style berths. The VIP cabin is furthest forward including an elevated and chest of drawer queen bed. The crew accommodations are down and behind the master suite, with bunk style berths. The engine room can be accessed from crew cabin as well as the cockpit.

The twin MTU 2600's and 27.5 KW Onan generator sets fit well in the impeccable stand up, Awlgripp engine room. The Octoplex ship's monitoring system feature is displayed here with the centralized *sea water system* which services majority of water fed machinery via just 2 thru-hull fittings. All equipment is easily accessed, including water maker, batteries & chargers, filters and oil change assembly, etc.

From the cockpit you ascend to the fly bridge with a Palm Beach Tower carbon fiber enforced hardtop and 3 sided Strataglass enclosure. This is arguably the most popular area of the vessel while underway or at anchor. There are 3 Bluewater chairs at the centerline helm (including matching walnut pod) with bench seating flanked to port & starboard. Additional seating is in front of helm station with huge top loading frig/freezer furthest forward. The electronics & navigational

aids are *state of the art* with custom display designed by the vessel's highly professional captain. The electric teaser reels and hydraulic Rupp out riggers are easily deployed from the helm area. Another "captain designed" item is a removable ladder leading up to hard top for servicing the mast & antennas.

SISU has a full aluminum bow rail and pulpit with Lewmar anchor windlass, and non-skid foredeck and 3 Romar hatches.

Mezzanine Cockpit

- Mezzanine seating
- Ultra leather mezzanine cushions
- Esthec decking system
- Sunshade with poles that go in aft rod holders
- Full cockpit fly cover
- Bluewater rocket launcher (13 rods)
- 6 rod holders in covering board
- Eskimo ice chipper
- Refrigerated cockpit step box
- Transom coaming with gate and transom livewell, lighted & clear lid
- Armstrong dive ladder
- Transom swim steps
- In deck livewell
- Fishbox dividers
- Fresh and salt water wash downs in cockpit (dedicated)
- (2) 24V outlets forward under coaming
- (2) 12V outlets under coaming
- Lazarette Awlgripped

Salon

- Electric salon door opener
- L-shaped sofa w/throw pillows (Dove Grey) fully lifted back w/storage
- Custom bottle storage in sofa divider
- Ottoman with storage and recessed tray with hinged lid
- 46" pop-up TV with entertainment center, Samsung custom
- Island bar w/granite top (Antartide White)
- (3) Bar stools with fully closed backs - upholstered, pedestals brushed stainless
- Bose V35 entertainment system with Blu-Ray & Surround Sound
- Dimmers for quartz lights
- LED lighting throughout

- High gloss walnut stained teak wood treatments throughout
- Torreon light grey / tan carpet (Sierra Park) w/full canvas runner DAY HEAD:
- Head Hunter Marine toilet
- Custom wallpaper & granite vanity top
- Brushed nickel towel bars and rings
- Faucet in satin nickel

Galley

- Dinette w/walnut stained table
- Amtico flooring
- Granite counter tops (Antaride White)
- (4) Sub Zero refrigerator drawers
- (2) Sub Zero freezer drawers
- Convection oven
- 4-burner surface mounted
- Garbage disposal
- Trash compactor
- Undermounted double stainless steel sink w/satin nickel faucet
- 110V outlet switch on bottom of upper cabinet above sink
- A/C control in galley closet

Master Stateroom

- King berth with pillow top mattress
- Appliqued bedspread and shams
- His 'n Hers cedar lined closets & chest of drawers
- Custom wallpaper - Times Square Tan
- Custom A/C valance
- Custom headboard and end table
- Teak top end tables
- Safe under berth
- 32" Samsung Flat screen TV
- Bose system in closet - Surround Sound, Apple TV & DVR
- Telephone outlet
- Storage under berth
- Opening port light MASTER BATHROOM:
- Satin nickel shower fixtures and faucet
- Towel bar in brushed nickel
- Teak face on lower vanity

- Mirror around upper vanity
- Granite vanity top
- Custom Amtico flooring
- Head Hunter Marine toilet

Forward Stateroom

- Queen berth
- Custom wallpaper
- DVD player
- 26" Samsung Flat screen TV
- Cedar lined closet
- Storage under bed VIP HEAD:
- Shower fixtures satin nickel
- Brushed aluminum shower door
- Towel bars and rings brushed nickel & faucet
- Granite vanity top
- Mirrored ceiling in head
- Teak face on lower vanity
- Mirror around upper vanity insert
- Custom wallpaper
- Custom Amtico flooring
- Head Hunter Marine toilet

Port Guest Stateroom

- Bunk berths
- 19" Samsung Flat screen TV
- Custom wallpaper
- Locker storage PORT STATEROOM HEAD:
- Chrome shower door
- Satin nickel shower fixtures and faucet satin nickel
- Granite vanity top
- Mirrored ceiling in head
- Teak face on lower vanity
- Custom wallpaper
- Custom Amtico flooring
- Head Hunter Marine toilet

Crew Cabin

- Bunk berths
- 19" Samsung Flat screen TV
- Teak locker top
- Custom wallpaper
- Carpet runners
- Engine room access door, fireproof CREW HEAD:
- Chrome shower door
- Shower fixtures satin nickel, faucet satin nickel
- Towel bars & rings brushed nickel
- Granite vanity top
- Teak face on lower vanity
- Mirrored ceiling
- Mirror around upper vanity insert
- Custom wallpaper in head
- Custom Amtico flooring
- Head Hunter Marine toilet

Engine & Mechanical

- Twin MTU 16V2000 M94 - 2600 MHP - 95 hrs. - Transferrable warranties
- (2) 27.5 kw Onan generators - 100 hrs. - Transferrable warranties
- Racor fuel filters - mains & gens, dual for mains
- 1800 GPD water maker with auto backflush - Sea Recovery
- Backup variable speed freshwater pump (24V)
- Charles Autophase C-power shore power transformer
- Tee in dockside water manifold to fill water tank from cockpit
- 110V outlet on aft bulkhead at entranceway & forward engine room bulkhead
- Head Hunter head system
- Head Hunter fresh water pump
- Deck fill for fresh water tank
- Underwater exhaust system
- Awlgrip brass thru-hulls & sea strainers in engine room and forward bilges
- Underwater exhaust system
- Viper electronic steering
- Clear acrylic shaft log access covers
- Central Vac system in salon, WillyVac in engine room and lazarette
- Access door to crew quarters

Flybridge

- Palm Beach Towers carbon fiber enforced hard top with recessed LED lighting
- 3-sided Strataglass enclosure
- Release teak helm pod with custom wood stain matches interior
- Single lever control handles w/bow thruster button in handles
- Clamshell catches for electronics boxes
- Recessed electronics boxes
- Recessed trim tab covers
- Electric trolling valves
- Tank Sentry gauge and pump out for holding tank (located behind galley closet)
- MTU bridge controls System 2000 Series engines only
- Dedicated batteries for electronics & charger
- (3) Bluewater Series helm chairs
- Canvas covers for everything
- Removable flybridge jumpseat backrest
- Clam shell handles for electronics box lid
- Fridge/Freezer box & separate drink box & garbage
- Fresh water outlet on bridge
- Custom ladder to bridge with handrails
- Single radar mast
- Hatch cover for ladder opening to bridge

Electronics

- (3) MONITORS 17" LED GLASS BRIDGE MARINE KEP - BLACK BOX w/PLOTTER - RADAR -DEPTH RECORDER
- (2) RADAR PLOTTER FURUNO NAVNET 3D MFDBB PROCESSOR
- PLOTTER FURUNO NAVNET 3D 8.4" LCD MFD8
- DISPLAY REMOTE DATA DISPLAY FURUNO RD 30
- GYRATION GO 2.4 WIRELESS MOUSE & KYBD
- IPOD DOCK, URC PSX-2
- SIRIUS SAT WEATHER MODULE BBWX2
- SATRADIO SIRIUS ANTENNA SHAKESPEARE
- NMEA MULTIPOINT BOX MARETRON CM-CF-4

- FURUNO RD-33 SOUNDER - DIGITAL SHALLOW WATER
- SOUNDER FURUNO FCV1200BB
- VIEW SOUNDER ON HELM DISPLAYS
- AUTOPILOT GARMIN AP2401 W/OUT PUMP
- (2) VHF RADIO ICOM IC-M604 BLACK
- (2) VHF SPEAKERS EXTERNAL MB-41 BLACK MOUNT OVERHEAD IN TEASER REEL BOX
- STEREO RECEIVER MARINE W/IPOD DOCK XM FUSION MS-IP
- XM FUSION STEREO W/REMOTE
- AMPLIFIER JL AUDIO 4 CHANNEL 100W
- KVH TRACPHONE V3, RACKMOUNT ACU AND MODEM
- OUTER D-LINK DIR-615
- CELL PHONE TRANSCEIVER TELULAR SX7T-605G
- SATELLITE TV KVH TRACVISION HD7
- (4) DSS RECEIVER DIRECT TV HI-DEF H24 KVH
- REMOTE, CUSTOM PROGRAMMED URC MX-6000 FOR SALON
- PC, KEP MDEIA VERSION ONLY
- GYRATION GO 2.4 WIRELESS MOUSE & KYBD
- (3) ENGINE ROOM CAMERAS, (1) COCKPIT CAMERA
- CAMERA SWITCHER COLOR QUAD WITH ZOOM APP
- REMOTE CONTROL, URC MX-980 FOR MSR
- CAMERA FLIR THERMAL & LOW LIGHT IMAGING
- VIEW FLIR ON HELM DISPLAYS
- ACR SPOTLIGHT
- (4) OCEAN 3010FL-W OCEANLED 24VDC UNDERWATER LIGHTS, OUT TRANSOM

Hull

- Snow White hull color
- Bottom paint Black
- Bootstripe is Slate Grey
- Forward bilge and anchor locker Awlgrippped
- Fiberglass side thru-hulls
- Bow thruster hydraulic
- (4) underwater lights
- (3) fuel tanks
- (6) bladed Veem propellers
- Prop pockets to reduce draft
- Magnetic switches for bilge lights

Decks

- Bow pulpit
- White rub rail
- Hand rails follow top of salon window
- Under mounted bridge hand rails wrap 18" around front of bridge
- Windshield mask
- Lewmar V4 windlass
- Custom line chain combination 250' rope, 75' chain
- Stainless steel gas springs for anchor locker hatch
- Fresh water washdown at bow inside anchor locker

Remarks

This is most definitely not your father's Oldsmobile! SISU is the absolute epitome of what a semi-custom sport fishing convertible is all about. She is in pristine condition cosmetically and mechanically and will not dissappoint the most demanding of potential buyers for this magnificent vessel. Fresh bottom job and engine service July 2014

Исключения

При продаже яхты исключаются личные вещи владельца.

Отказ от ответственности

Компания предоставляет описание судна или яхты добросовестно, но не может гарантировать точность этой информации, а также не ручается за техническое состояние. Покупатель должен проинструктировать своих агентов или оценщиков исследовать представленную информацию более подробно, по собственному желанию. Продажа судна или яхты, изменение цены или снятие с продажи будет происходить без предварительного уведомления.

ФОТОГРАФИИ

Bow View



Port View



Transom



Bow Pulpit



Fighting Chair



Transom Door 1



Transom Door 2



Transom 3



Cockpit 1



Mezzanine 1



Mezzanine 2



Steps to Mezzanine



Bow Pulpit 1



Bow 1



Bow 2



Bow to FB



Port Deck



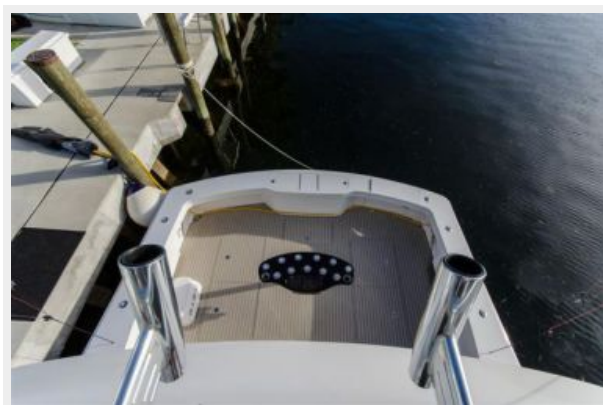
Starboard Deck



Hatch to FB



FB Looking to Cockpit



FB Seating 1



FB Seating 2



FB Helm 1



FB Helm 2



FB Helm 3



FB Helm 4



FB Monitors



FB Forward Storage



FB Settee Forward



FB Radar



FB to Bow



Mezzanine Hatch



Salon 1



Salon 2



Galley 1



Galley 2



Galley 3



Galley 5



Galley 6



Galley 7



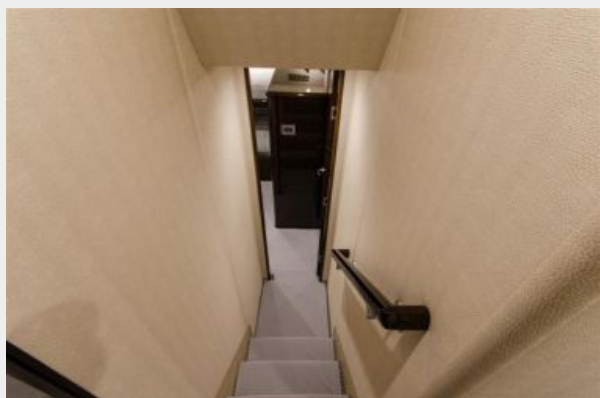
Galley Dinette



Day Head



Stairs to Companionway



Companionway 1



Companionway 2



Master Entrance



Master Stateroom 1



Master Stateroom 2



Master Stateroom 3



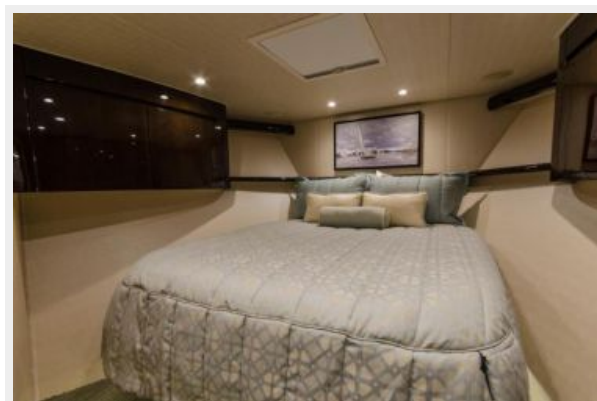
Master Head



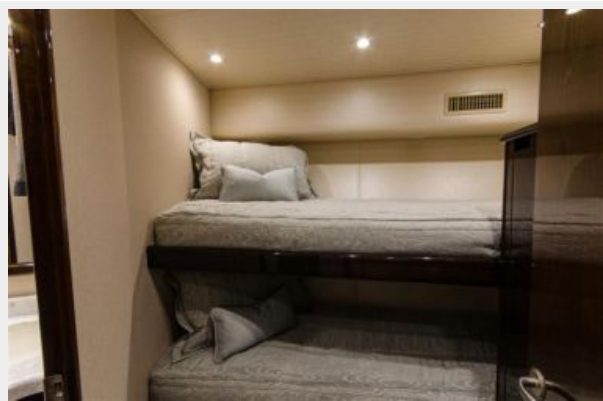
VIP Head



VIP Forward



Guest Bunk Stateroom



Guest Head 1



Guest Head 2



Washer Dryer



Storage Area



Electrical Storage Area



Crew Quarters



ER Entrance



ER 1



ER 2



ER 3



ER 4



ER 5



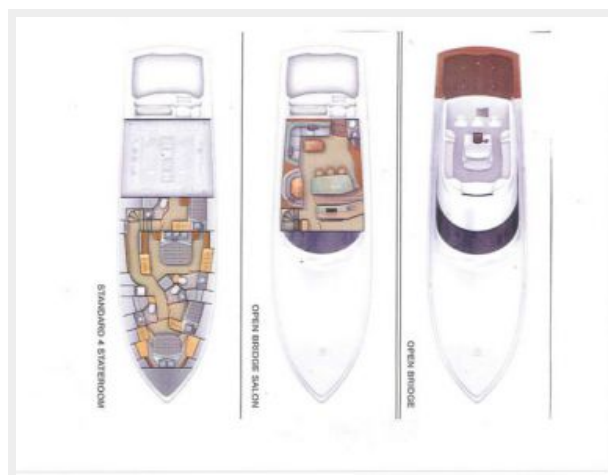
ER 6



ER 7



Layout



КОНТАКТЫ

Андрей Шестаков (Andrey Shestakov) – ведущий яхтенный брокер отдела продаж яхт и судов компании Shestakov Yacht Sales Inc. Официальный представитель Shestakov Yacht Sales Inc. для русскоговорящих клиентов в центральном офисе компании в Майами/Форт Лодердейл/Флорида/США.

Контактная информация

Email: andrey@shestakovyachtsales.com

Web: shestakovyachtsales.com

Телефоны

Краснодарский край: **+7(918)465-66-44**

США, Майами, Флорида: **+1(954)274-4435**

Время работы

Понедельник – Суббота: **9:00 - 21:00**
EDT

Воскресенье: **Закрыто**

Адрес



Harbour Towne Marina, 850 NE 3rd St,
STE 213, Dania, FL 33004