

NORTHERN LIGHTS — WESTSHIP



Builder: WESTSHIP

Year Built: 2000

Model: Motor Yacht

Price: PRICE ON APPLICATION

Location: United States

LOA: 132' 0" (40.23m)

Beam: 28' 0" (8.53m)

Max Draft: 8' 0" (2.44m)

Cruise Speed: 16 Kts. (18 MPH)

Max Speed: 18 Kts. (21 MPH)

Our experienced yacht broker, Andrey Shestakov, will help you choose and buy a yacht that best suits your needs **NORTHERN LIGHTS — WESTSHIP** from our catalogue. Presently, at Shestakov Yacht Sales Inc., we have a wide variety of yachts available on our sale's list. We also work in close contact with all the big yacht manufacturers from all over the world.

If you would like to buy a yacht **NORTHERN LIGHTS — WESTSHIP** or would like help answering any questions concerning purchasing, selling or chartering a yacht, please call **+1(954)274-4435**

TABLE OF CONTENTS

TABLE OF CONTENTS	2
SPECIFICATIONS	3
Basic Information	3
Dimensions	3
Speed, Capacities and Weight	3
Accommodations	3
Hull and Deck Information	3
Engine Information	4
DETAILED INFORMATION	5
CONSTRUCTION	5
DIMENSIONS	5
MACHINERY	5
COMMUNICATION, NAVIGATION & ENTERTAINMENT SYSTEMS	6
TENDERS & TOYS	8
DECK EQUIPMENT	9
SECURITY, FIRE FIGHTING & SAFETY EQUIPMENT	9
COMMENTS	9
Exclusions	10
Disclaimer	10
PHOTOS	11
CONTACTS	14
Contact details	14
Telephones	14
Office hours	14
Address	14

SPECIFICATIONS

Basic Information

Category: Motor Yacht

Model Year: 2000

Year Built: 2000

Refit Year: 2013

Country: United States

Fly Bridge: Yes

Dimensions

LOA: 132' 0" (40.23m)

Beam: 28' 0" (8.53m)

Max Draft: 8' 0" (2.44m)

Speed, Capacities and Weight

Cruise Speed: 16 Kts. (18 MPH)

Max Speed: 18 Kts. (21 MPH)

Gross Tonnage: 422 Pounds

Water Capacity: 3000 Gallons

Fuel Capacity: 8000 Gallons

Accommodations

Total Cabins: 5

Sleeps: 10

Crew Berths: 7

Crew Sleeps: 4

Hull and Deck Information

Hull Material: Composite

Exterior Designer: Carr Design

Interior Designer: Yacht Design Associates

Engine Information

Engines: 2

Manufacturer: MTU

Model: 2V396TE

Engine Type: Inboard

Fuel Type: Diesel

DETAILED INFORMATION

CONSTRUCTION

Built in 2000 by Westship (USA), with a fiberglass hull and superstructure.

DIMENSIONS

General

Length Overall (L.O.A.): 132.00 feet (40.23 meters)
Beam: 28.00 feet (8.53 meters)
Draft: 8.25 feet (2.51 meters)
Tonnage (half load): 225 displacement tons

Capacities

Fuel Capacity: 8,000 U.S. Gallons (30,300 liters)
Water: 3,000 U.S. Gallons (11,400 liters)

Speed

Maximum: 18.0 knots
Cruising: 16.0 knots

MACHINERY

Main Engines:

Engine Type: (2) MTU 16V396TE(W-6 Service master overhaul 2013)

Generators & Electricity:

Output: 120V/240V/3-phase/60 Hz
Generators: (2) 80 Kw Northern Lights generators (port – rebuilt03/2013 & starboard – rebuilt 11/2013)
Shore Power: Atlas 75 KVA

Air Conditioning:

Type: MarineAir Systems, (4) 10ton compressor (new 2012)

Other Machinery:

Watermakers: Sea Recovery 4,000 U.S. Gallons per day

Aqua Whisper 900 U.S. Gallons per day

Stabilizers: ABT Trac Zero Speed Stabilizers (new 2009)

Bow Thruster: American

COMMUNICATION, NAVIGATION & ENTERTAINMENT SYSTEMS

Communication Systems:

V-SAT: Orbit 7103 & DTV 7200

SATcom: F-55 Satellite Communication System

Telephone System: Lucent

(2) land line connections

(3) viop phone lines

SSB: Sea 235 HF/SSB Digital Radio Telephone

VHF: Furuno NHF Radio Telephone FM-8500 with 2remotes (aft crew area, galley or forwardcrew area)

Sea 156 VHF Radio Telephone

Other: Sony AM/FM Stereo Radio

Navigation Systems:

Radar: Furuno X-Band Radar FR-2125 with ARPA
Furuno S-Band Radar FR-2135S with ARPA

Gyrocompass: Anschutz (New 2013)

Magnetic Compass: Delta Magnetic Compass with Sonde to back-up Gyro

Auto Pilot: Anschutz Autopilot System to include: Pilotstar D, NautoAlarm Panel, Watch Alarm, Rudder Angle Indicator, Gyro Repeater, Dimmer, Auto-Manual Switch, Override Switch, NFU Tiller

Depth Sounder: Furuno FCV-582L Color Sounder with 50kc
 Transducer (engine room keel) and a 200 kc
 Transducer (at transom)
 Raytheon ST-80 Masterview Sounder (forward keel, port chine, starboard chine)

GPS: (2) Northstar 941X GPS

Weather FAX: Weather Channel Marine Satellite Weather System

Ships Computer: Computer for Ship's Chart Plotter Networked
 Wireless Keyboard and mouse

Ships Printer: HP Printer
 All-in-One HP Printer/Scan/Fax/Copier

Wind/Speed Log: (2) Raytheon Masterview Display (Windspeed / Direction / Etc)

Navtex: Furuno Navtex Receiver NX-500

Entertainment System:

Video Equipment: DTV-TV receivers (16) North America & (6) PuertoRico (Caribbean)
 Kaleidoscope System (Throughout)

TV's: (3) 42" LG (Skylounge, Salon, Master), 36" LG (VIP) all TV's with Kaleidoscope
 (3) Envision with DVD (Guests)
 26" LG (Galley)
 (4) 22" Toshiba with DVD (Crew Area)
 (2) 32" Samsung with DVD (Crew Area)

Audio Equipment: A/V Controllers via iPads (Salon, Master & SkyLounge)
 Music System with Key Pad Controls in Galley, Salon, Aft Deck, Boat Deck, Sun Deck and Skylounge. This system has inputs from a Sony 5 CD Changer, Yamaha AM/FM Stereo Tuner and Satellite Receiver.

Skylounge: Surround Sound System to include 42" NEC PlasmaTV, Yamaha Stereo Tuner, Sony DVD and Mitsubishi VCR

Salon: Surround Sound System to include 42" NEC Plasma TV, Yamaha Stereo Tuner, Sony DVD and Mitsubishi VCR

Master Stateroom: Surround Sound System to include 42" NEC PlasmaTV, Yamaha Stereo Tuner, Sony DVD and Mitsubishi VCR

Guest 32" Envision Stereo TV with DVD, Sony Stereo AM/FM/CD Player with 50 CD
Staterooms: Storage

Exercise Room: Envision Stereo TV with DVD, Sony Stereo AM/FM/CD Player with 50 CD Storage

Galley: 26" LG TV Sony Stereo AM/FM/CD Player

Crew Cabins: All 5 cabins have 22" Toshiba with DVD and AM/FM/CD Stereo Players

Crew Lounge: 32" Samsung with DVD Sony AM/FM/CD Stereo Player

TENDERS & TOYS

Tenders: 20' Nautica Cat/Landing Craft tender with 150 Hp engine (2012)

Toys: (2) Yamaha wave-runners (2012)
Water skis (adult only)
Wake board
(2) Paddle boards
Inflatable towing floats
Trampoline
(20) Masks & snorkels

(40) Pairs of fins (6) small children and (34) small-to-large adults

Assortment of rash-guards (rashys)
Fishing Rods
Beach toys
Beach chairs & umbrellas
Assorted board games
Rendezvous diving only
Other: Fitness suite with integrated music and video system
Treadmill (gym only)
Two stationary/spinning Bikes on Boat Deck
Jacuzzi (Sundeck)

DECK EQUIPMENT

Searchlight: ACR RCL-600A Searchlight
 (2) ACR RCL-100 Searchlights

SECURITY, FIRE FIGHTING & SAFETY EQUIPMENT

Security Equipment:

CCTV System: IRIS/PTZ (new 2013)

Cameras: 11 cameras

Monitors: (5) 21" Hitachi Monitors – all inputs can be switched to any monitor with touch screen

Fire Fighting Equipment:

Fire Control Mimick Panel that indicates Running Lights, High Water, Fire/Smoke, and a
System: Ship's Alarm and Security read outs

COMMENTS

This impeccably maintained 132-foot Westship welcomes guests into an exclusive world of sensuous and cosmopolitan style. Attention to detail is given to every aspect, from the recent upgrade of soft furnishings, both interior and exterior, to the smooth operation of all mechanical systems. She also carries an abundance of water toys including a custom 30' Yacht Limo with 300 HP engines , a 20' Nautica tender with twin 150-hp engines , and 2 new Jet Skis.

Just like her namesake, NORTHERN LIGHTS is a dazzler, with a stunning profile that turns heads wherever she goes. Lavishly decorated, her interior is sleek yet warm, refined yet sexy. The atmosphere is one of serene sophistication, with lush upholsteries in white, black, and gold. Luminous and vibrant glass sculptures, stainless steel, and gold plate all add sparkle and bling throughout the yacht. The gracefully curving lines of the furniture and other details echo the flow of waves, while original paintings celebrate feminine beauty.

Highlights of the main saloon include a marble bar, gracious sitting areas, and broad windows that draw in the beauty of the outdoors. The open dining area accommodates 10 guests to savor fine cuisine at a stunning glass table appointed with Baccarat crystal and fine china. Walk-around side decks provide easy access forward and aft.

As a tri-deck motor yacht, NORTHERN LIGHTS has numerous choices of places to enjoy the pampering experience of being aboard. Large double doors open to the aft deck, perfect for alfresco dining . A spiral staircase leads up from inside the saloon to the large sky lounge. There

you will find a full bar with seating, a hidden plasma TV, and game table. In the evening, the fiber optic shooting star planetarium ceiling and adjustable mood lighting create just the right setting for dancing the night away. Doors lead from the sky lounge to the boat deck's dining area, appointed with BBQ, and a covered seating area. Above the sky lounge, on the sundeck, 360-degree views create the exhilarating feeling of being on top of the world. The heated Jacuzzi, full bar with seating, and spacious seating make this a great place for sunbathing or cocktails.

All four of the staterooms have state-of-the-art entertainment systems. The full-beam master suite, located on the main deck, is a sophisticated oasis, with a king-size bed, expansive windows for natural light, and a 42-inch plasma TV. The adjoining his and her baths have marble countertops, a full-size shower whose glass wall is etched with a graceful mermaid amid underwater flora, and a granite Jacuzzi tub. One deck below, a marble foyer opens to the guest staterooms, all of which have personal state-of-the-art entertainment systems. Two have queen-size beds and adjoining baths with marble vanities, while the third, also ensuite, is appointed with large twin beds. The fifth stateroom offers a queen bed and entertainment system or can be converted in to a fully equipped fitness suite. NORTHERN LIGHTS shimmers on the horizon. Her polished crew of 7 is waiting to welcome you to a yacht like none other.

- Exclusions include all of Owner's personal effects -

"All speeds, capacities, consumption, etc. are approximate or estimated; measurements can also be approximate. Specifications are provided for information only and particulars herein obtained from sources believed to be correct, but are not guaranteed. Buyer should instruct his agent and/or surveyor to check all details for accuracy. Offered subject to prior sale, price and/or inventory change, or withdrawal from the market without notification."

Exclusions

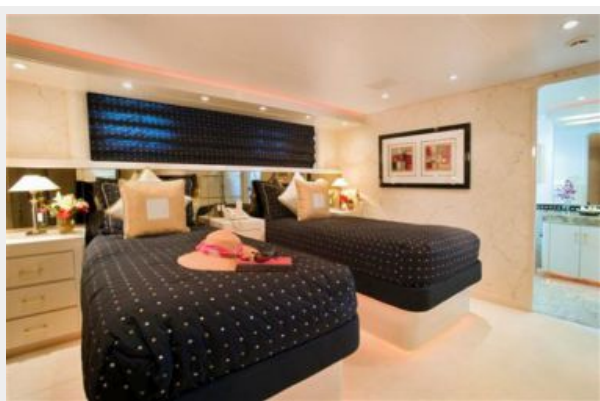
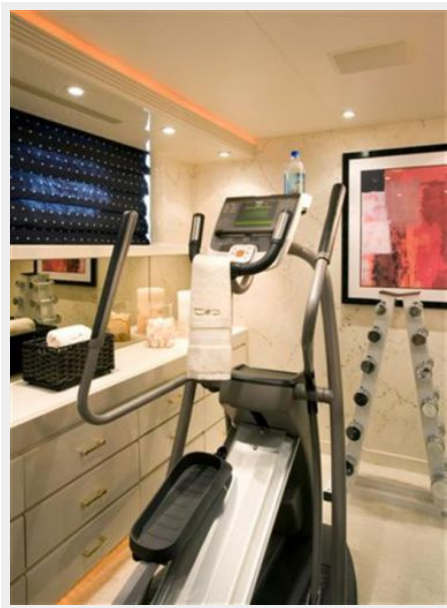
Owner's personal belongings.

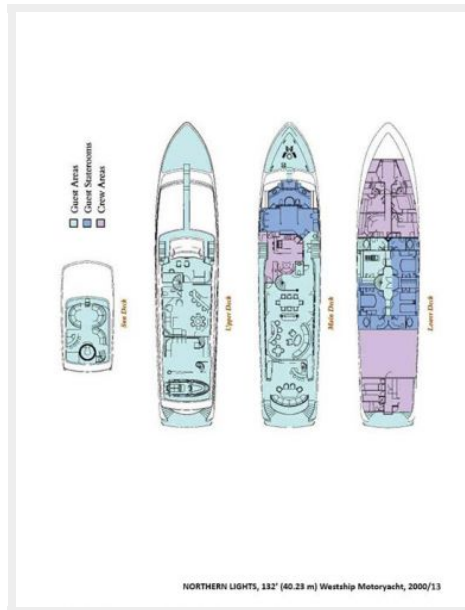
Disclaimer

The Company offers the details of this vessel or yacht in good faith but cannot guarantee or warrant the accuracy of this information nor warrant the condition of the vessel. A buyer should instruct his representatives, agents, or his surveyors, to investigate such details as the buyer desires validated. This vessel or yacht is offered subject to prior sale, price change, or withdrawal without notice.

PHOTOS







CONTACTS

Andrey Shestakov, leading yacht broker of the sales department of Shestakov Yacht Sales Inc. Shestakov Yacht Sales Inc., the official representative of the Miami/Fort Lauderdale FL headquarters.

Contact details

Email: andrey@shestakovyachtsales.com

Web: shestakovyachtsales.com/en/

Telephones

USA: +1(954)274-4435

Office hours

Monday – Saturday: **9:00 - 21:00** EDT

Sunday: **closed**

Address



Harbour Towne Marina, 850 NE 3rd St,
STE 213, Dania, FL 33004