

## NORTHERN LIGHTS — WESTSHIP



**Судостроитель:** WESTSHIP

**Год постройки:** 2000

**Модель:** Моторная яхта

**Цена:** **ЦЕНА ЯХТЫ ПО ЗАПРОСУ**

**Местонахождение:** United States

**Длина общая:** 132' 0" (40.23m)

**Ширина:** 28' 0" (8.53m)

**Макс. осадка:** 8' 0" (2.44m)

**Крейс. скорость:** 16 Kts. (18 MPH)

**Макс. скорость:** 18 Kts. (21 MPH)

Купить **NORTHERN LIGHTS — WESTSHIP** а также выбрать подходящую вам яхту из нашего каталога яхт вам поможет опытный яхтенный брокер Андрей Шестаков. На сегодняшний день компания **Shestakov Yacht Sales Inc.** имеет большое количество яхт в собственном списке продаж, а также тесно сотрудничает со всеми крупными яхтенными производителями по всему миру.

Для того чтобы купить яхту **NORTHERN LIGHTS — WESTSHIP** а также проконсультироваться по любому вопросу связанному с покупкой, продажей, чартером яхт позвоните по телефону **+7(918)465-66-44**.

# ОГЛАВЛЕНИЕ

ОГЛАВЛЕНИЕ	2
ХАРАКТЕРИСТИКИ	3
Основная информация	3
Размеры	3
Скорость, вместимость и масса	3
Размещение	3
Корпус и палуба	3
Информация о двигателе	4
ПОДРОБНОЕ ОПИСАНИЕ	5
CONSTRUCTION	5
DIMENSIONS	5
MACHINERY	5
COMMUNICATION, NAVIGATION & ENTERTAINMENT SYSTEMS	6
TENDERS & TOYS	8
DECK EQUIPMENT	9
SECURITY, FIRE FIGHTING & SAFETY EQUIPMENT	9
COMMENTS	9
Исключения	10
Отказ от ответственности	10
ФОТОГРАФИИ	11
КОНТАКТЫ	14
Контактная информация	14
Телефоны	14
Время работы	14
Адрес	14

# ХАРАКТЕРИСТИКИ

## Основная информация

Тип судна: Моторная яхта	Модельный год: 2000
Год постройки: 2000	Год обновления: 2013
Страна: United States	Открытая палуба мостика: Да

## Размеры

Длина общая: 132' 0" (40.23m)	Ширина: 28' 0" (8.53m)
Макс. осадка: 8' 0" (2.44m)	

## Скорость, вместимость и масса

Крейс. скорость: 16 Kts. (18 MPH)	Макс. скорость: 18 Kts. (21 MPH)
Чистый вес: 422 Pounds	Вместимость воды: 3000 Gallons
Объем топливного бака: 8000 Gallons	

## Размещение

Всего кают: 5	Спальные места: 10
Койки экипажа: 7	Спальных мест экипажа: 4

## Корпус и палуба

Материал корпуса: Composite	Дизайнер экстерьера: Carr Design
-----------------------------	----------------------------------

Дизайнер интерьера: Yacht Design Associates

## Информация о двигателе

---

**Двигатели:** 2

**Производитель:** MTU

**Модель:** 2V396TE

**Тип двигателя:** Inboard

**Тип топлива:** Diesel

---

# ПОДРОБНОЕ ОПИСАНИЕ

---

## CONSTRUCTION

---

Built in 2000 by Westship (USA), with a fiberglass hull and superstructure.

## DIMENSIONS

---

### General

Length Overall (L.O.A.): 132.00 feet (40.23 meters)  
Beam: 28.00 feet ( 8.53 meters)  
Draft: 8.25 feet ( 2.51 meters)  
Tonnage (half load): 225 displacement tons

### Capacities

Fuel Capacity: 8,000 U.S. Gallons (30,300 liters)  
Water: 3,000 U.S. Gallons (11,400 liters)

### Speed

Maximum: 18.0 knots  
Cruising: 16.0 knots

## MACHINERY

---

### Main Engines:

Engine Type: (2) MTU 16V396TE(W-6 Service master overhaul 2013)

### Generators & Electricity:

Output: 120V/240V/3-phase/60 Hz  
Generators: (2) 80 Kw Northern Lights generators (port – rebuilt03/2013 & starboard – rebuilt 11/2013)  
Shore Power: Atlas 75 KVA

### Air Conditioning:

Type: MarineAir Systems, (4) 10ton compressor (new 2012)

Other Machinery:

Watermakers: Sea Recovery 4,000 U.S. Gallons per day

Aqua Whisper 900 U.S. Gallons per day

Stabilizers: ABT Trac Zero Speed Stabilizers (new 2009)

Bow Thruster: American

## COMMUNICATION, NAVIGATION & ENTERTAINMENT SYSTEMS

---

Communication Systems:

V-SAT: Orbit 7103 & DTV 7200

SATcom: F-55 Satellite Communication System

Telephone System: Lucent

(2) land line connections

(3) viop phone lines

SSB: Sea 235 HF/SSB Digital Radio Telephone

VHF: Furuno NHF Radio Telephone FM-8500 with 2remotes (aft crew area, galley or forwardcrew area)

Sea 156 VHF Radio Telephone

Other: Sony AM/FM Stereo Radio

Navigation Systems:

Radar: Furuno X-Band Radar FR-2125 with ARPA  
Furuno S-Band Radar FR-2135S with ARPA

Gyrocompass: Anschutz (New 2013)

Magnetic Compass: Delta Magnetic Compass with Sonde to back-up Gyro

Auto Pilot: Anschutz Autopilot System to include: Pilotstar D, NautoAlarm Panel, Watch Alarm, Rudder Angle Indicator, Gyro Repeater, Dimmer, Auto-Manual Switch, Override Switch, NFU Tiller

Depth Sounder: Furuno FCV-582L Color Sounder with 50kc  
 Transducer (engine room keel) and a 200 kc  
 Transducer (at transom)  
 Raytheon ST-80 Masterview Sounder (forward keel, port chine, starboard chine)

GPS: (2) Northstar 941X GPS

Weather FAX: Weather Channel Marine Satellite Weather System

Ships Computer: Computer for Ship's Chart Plotter Networked  
 Wireless Keyboard and mouse

Ships Printer: HP Printer  
 All-in-One HP Printer/Scan/Fax/Copier

Wind/Speed Log: (2) Raytheon Masterview Display (Windspeed / Direction / Etc)

Navtex: Furuno Navtex Receiver NX-500

Entertainment System:

Video Equipment: DTV-TV receivers (16) North America & (6) PuertoRico (Caribbean)  
 Kaleidoscope System (Throughout)

TV's: (3) 42" LG (Skylounge, Salon, Master), 36" LG (VIP) all TV's with Kaleidoscope  
 (3) Envision with DVD (Guests)  
 26" LG (Galley)  
 (4) 22" Toshiba with DVD (Crew Area)  
 (2) 32" Samsung with DVD (Crew Area)

Audio Equipment: A/V Controllers via iPads (Salon, Master & SkyLounge)  
 Music System with Key Pad Controls in Galley, Salon, Aft Deck, Boat Deck, Sun Deck and Skylounge. This system has inputs from a Sony 5 CD Changer, Yamaha AM/FM Stereo Tuner and Satellite Receiver.

Skylounge: Surround Sound System to include 42" NEC PlasmaTV, Yamaha Stereo Tuner, Sony DVD and Mitsubishi VCR

Salon: Surround Sound System to include 42" NEC Plasma TV, Yamaha Stereo Tuner, Sony DVD and Mitsubishi VCR

Master Stateroom: Surround Sound System to include 42" NEC PlasmaTV, Yamaha Stereo Tuner, Sony DVD and Mitsubishi VCR

Guest 32" Envision Stereo TV with DVD, Sony Stereo AM/FM/CD Player with 50 CD  
Staterooms: Storage

Exercise Room: Envision Stereo TV with DVD, Sony Stereo AM/FM/CD Player with 50 CD Storage

Galley: 26" LG TV Sony Stereo AM/FM/CD Player

Crew Cabins: All 5 cabins have 22" Toshiba with DVD and AM/FM/CD Stereo Players

Crew Lounge: 32" Samsung with DVD Sony AM/FM/CD Stereo Player

## TENDERS & TOYS

Tenders: 20' Nautica Cat/Landing Craft tender with 150 Hp engine (2012)

Toys: (2) Yamaha wave-runners (2012)  
Water skis (adult only)  
Wake board  
(2) Paddle boards  
Inflatable towing floats  
Trampoline  
(20) Masks & snorkels  
  
(40) Pairs of fins (6) small children and (34) small-to-large adults  
  
Assortment of rash-guards (rashys)  
Fishing Rods  
Beach toys  
Beach chairs & umbrellas  
Assorted board games  
Rendezvous diving only  
Other: Fitness suite with integrated music and video system  
Treadmill (gym only)  
Two stationary/spinning Bikes on Boat Deck  
Jacuzzi (Sundeck)



---

## DECK EQUIPMENT

---

Searchlight:           ACR RCL-600A Searchlight  
                              (2) ACR RCL-100 Searchlights

---

## SECURITY, FIRE FIGHTING & SAFETY EQUIPMENT

---

### Security Equipment:

CCTV System:       IRIS/PTZ (new 2013)  
Cameras:            11 cameras

Monitors:           (5) 21" Hitachi Monitors – all inputs can be switched to any monitor with touch screen

### Fire Fighting Equipment:

Fire Control         Mimick Panel that indicates Running Lights, High Water, Fire/Smoke, and a  
System:             Ship's Alarm and Security read outs

---

## COMMENTS

---

This impeccably maintained 132-foot Westship welcomes guests into an exclusive world of sensuous and cosmopolitan style. Attention to detail is given to every aspect, from the recent upgrade of soft furnishings, both interior and exterior, to the smooth operation of all mechanical systems. She also carries an abundance of water toys including a custom 30' Yacht Limo with 300 HP engines , a 20' Nautica tender with twin 150-hp engines , and 2 new Jet Skis.

Just like her namesake, NORTHERN LIGHTS is a dazzler, with a stunning profile that turns heads wherever she goes. Lavishly decorated, her interior is sleek yet warm, refined yet sexy. The atmosphere is one of serene sophistication, with lush upholsteries in white, black, and gold. Luminous and vibrant glass sculptures, stainless steel, and gold plate all add sparkle and bling throughout the yacht. The gracefully curving lines of the furniture and other details echo the flow of waves, while original paintings celebrate feminine beauty.

Highlights of the main saloon include a marble bar, gracious sitting areas, and broad windows that draw in the beauty of the outdoors. The open dining area accommodates 10 guests to savor fine cuisine at a stunning glass table appointed with Baccarat crystal and fine china. Walk-around side decks provide easy access forward and aft.

As a tri-deck motor yacht, NORTHERN LIGHTS has numerous choices of places to enjoy the pampering experience of being aboard. Large double doors open to the aft deck, perfect for alfresco dining . A spiral staircase leads up from inside the saloon to the large sky lounge. There

you will find a full bar with seating, a hidden plasma TV, and game table. In the evening, the fiber optic shooting star planetarium ceiling and adjustable mood lighting create just the right setting for dancing the night away. Doors lead from the sky lounge to the boat deck's dining area, appointed with BBQ, and a covered seating area. Above the sky lounge, on the sundeck, 360-degree views create the exhilarating feeling of being on top of the world. The heated Jacuzzi, full bar with seating, and spacious seating make this a great place for sunbathing or cocktails.

All four of the staterooms have state-of-the-art entertainment systems. The full-beam master suite, located on the main deck, is a sophisticated oasis, with a king-size bed, expansive windows for natural light, and a 42-inch plasma TV. The adjoining his and her baths have marble countertops, a full-size shower whose glass wall is etched with a graceful mermaid amid underwater flora, and a granite Jacuzzi tub. One deck below, a marble foyer opens to the guest staterooms, all of which have personal state-of-the-art entertainment systems. Two have queen-size beds and adjoining baths with marble vanities, while the third, also ensuite, is appointed with large twin beds. The fifth stateroom offers a queen bed and entertainment system or can be converted in to a fully equipped fitness suite. NORTHERN LIGHTS shimmers on the horizon. Her polished crew of 7 is waiting to welcome you to a yacht like none other.

- Exclusions include all of Owner's personal effects -

"All speeds, capacities, consumption, etc. are approximate or estimated; measurements can also be approximate. Specifications are provided for information only and particulars herein obtained from sources believed to be correct, but are not guaranteed. Buyer should instruct his agent and/or surveyor to check all details for accuracy. Offered subject to prior sale, price and/or inventory change, or withdrawal from the market without notification."

## Исключения

---

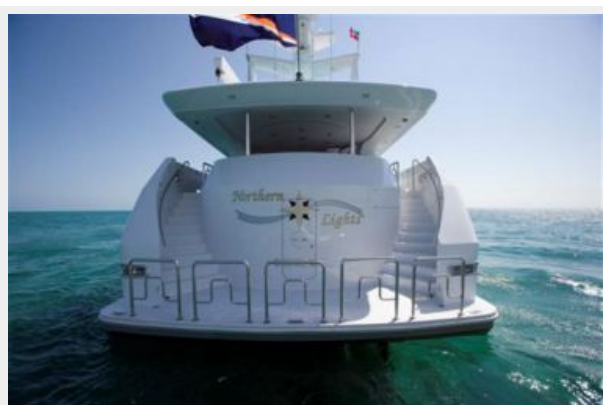
При продаже яхты исключаются личные вещи владельца.

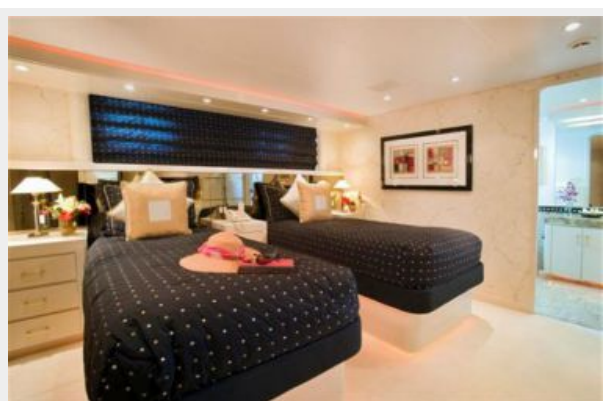
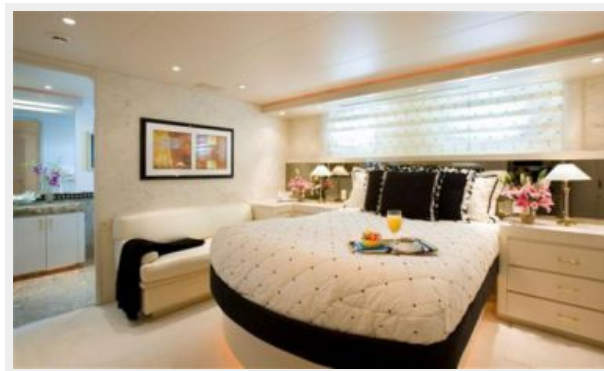
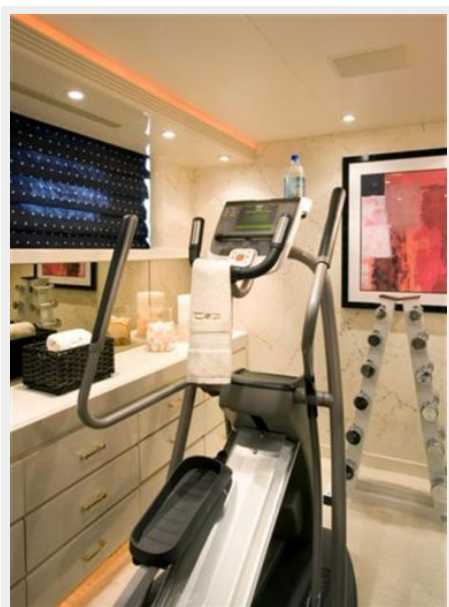
## Отказ от ответственности

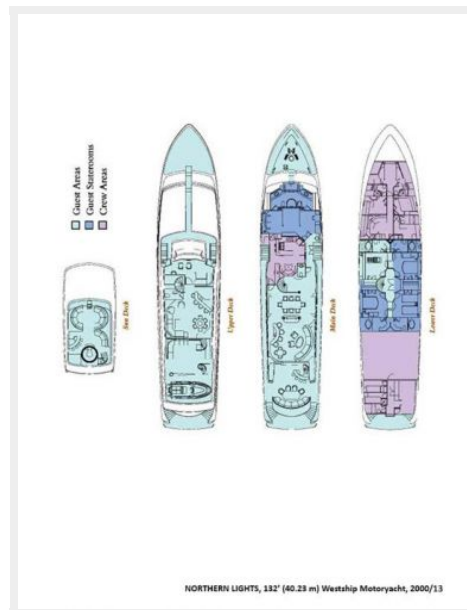
---

Компания предоставляет описание судна или яхты добросовестно, но не может гарантировать точность этой информации, а также не ручается за техническое состояние. Покупатель должен проинструктировать своих агентов или оценщиков исследовать представленную информацию более подробно, по собственному желанию. Продажа судна или яхты, изменение цены или снятие с продажи будет происходить без предварительного уведомления.

# ФОТОГРАФИИ







# КОНТАКТЫ

---

Андрей Шестаков (Andrey Shestakov) – ведущий яхтенный брокер отдела продаж яхт и судов компании Shestakov Yacht Sales Inc. Официальный представитель Shestakov Yacht Sales Inc. для русскоговорящих клиентов в центральном офисе компании в Майами/Форт Лодердейл/Флорида/США.

## Контактная информация

---

Email: [andrey@shestakovyachtsales.com](mailto:andrey@shestakovyachtsales.com)

Web: [shestakovyachtsales.com](http://shestakovyachtsales.com)

## Телефоны

---

Краснодарский край: **+7(918)465-66-44**

США, Майами, Флорида: **+1(954)274-4435**

## Время работы

---

Понедельник – Суббота: **9:00 - 21:00**  
EDT

Воскресенье: **Закрето**

## Адрес

---



Harbour Towne Marina, 850 NE 3rd St,  
STE 213, Dania, FL 33004